

## NO NAME 39 DEEP IMPACT — DEEP IMPACT



**Builder:** DEEP IMPACT

**Year Built:** 2014

**Model:** Sport Fisherman

**Price:** PRICE ON APPLICATION

**Location:** United States

**LOA:** 39' 9" (12.12m)

**Beam:** 10' 7" (3.23m)

**Max Draft:** 2' 10" (0.86m)

**Max Speed:** 66.911170634 Kts. (77 MPH)

Our experienced yacht broker, Andrey Shestakov, will help you choose and buy a yacht that best suits your needs **No Name 39 Deep Impact — DEEP IMPACT** from our catalogue. Presently, at Shestakov Yacht Sales Inc., we have a wide variety of yachts available on our sale's list. We also work in close contact with all the big yacht manufacturers from all over the world.

If you would like to buy a yacht **No Name 39 Deep Impact — DEEP IMPACT** or would like help answering any questions concerning purchasing, selling or chartering a yacht, please call **+1(954)274-4435**

# TABLE OF CONTENTS

TABLE OF CONTENTS	2
SPECIFICATIONS	3
Basic Information	3
Dimensions	3
Speed, Capacities and Weight	3
Accommodations	3
Hull and Deck Information	3
Engine Information	3
DETAILED INFORMATION	4
Features	4
EXCLUSIONS	6
Exclusions	6
Disclaimer	6
PHOTOS	7
CONTACTS	12
Contact details	12
Telephones	12
Office hours	12
Address	12

# SPECIFICATIONS

## Basic Information

Category: Sport Fisherman	Model Year: 2014
Year Built: 2014	Country: United States

## Dimensions

LOA: 39' 9" (12.12m)	Beam: 10' 7" (3.23m)
Max Draft: 2' 10" (0.86m)	MFG Length: 39' 9" (12.12m)

## Speed, Capacities and Weight

Max Speed: 66.911170634 Kts. (77 MPH)	Water Capacity: 70 Gallons
Holding Tank: 30 Gallons	Fuel Capacity: 544 Gallons

## Accommodations

Total Heads: 1
----------------

## Hull and Deck Information

Hull Material: Fiberglass
---------------------------

## Engine Information

Engines: 4	Manufacturer: Mercury
Model: Verado SCI	Engine Type: Outboard
Fuel Type: Gas	

---

# DETAILED INFORMATION

---

## Features

---

This Deep Impact 399C model has only 55 hours on the engines. She is powered by four 350 hp Mercury Verado's and is capable of a top speed of 77 mph. She has an air conditioned cuddy cabin forward that sleeps three and also has a full galley. A walk-in head compartment is in the helm console and includes a sink and shower.

### GALLEY AND CABIN

- G.E. Microwave Oven
- Dometic Origo E100 glass top single burner stove
- Isotherm refrigerator
- Isotherm Icemaker
- Custom bottle and glass storage compartment
- Samsung 32" LCD television
- Bose Surround Sound System with docking station
- Panasonic Blue Ray disc player
- Clarion stereo system with helm remote
- Stainless steel galley sink
- Port and starboard sofa that converts to berth
- Single berth aft
- Water heater
- Pressure fresh water system
- Overhead LED lighting
- Head compartment in center console with side door
- Stainless steel sink in head with shower wand
- Jabsco electric toilet
- Six JL audio speakers and two SJB woofer

### ELECTRONICS and NAVIGATION

- Two Garmin GPS MAP 7215 displays
- Garmin 48-mile HD radar
- Garmin fish finder
- Garmin VHF 100 Radio
- Ritchie high speed compass

### ELECTRICAL EQUIPMENT

- 5 KW Onan diesel generator Model #5MDKBH in sound box
- Two Pro-Marine 12-40 P automatic battery chargers
- Six Puretron 12 volt AGM batteries
- Automatic battery isolation switches

- Battery parallel switch
- Dockside electric connectors
- 110 volt DC system
- Breaker panel in cabin

## **FISHING EQUIPMENT**

- Tigress outriggers
- Live well
- Two in-deck fish boxes with macerators
- (6) Cockpit rod holders
- (6) Hardtop mounted rod holders

## **HULL and DECK EQUIPMENT**

- Custom oversized fiberglass hardtop
- Clear acrylic windshield
- Navigation and anchor lights
- Overhead hardtop courtesy lights
- Horn
- Two Ocean LED underwater lights
- Cockpit shower
- Forward and aft LED spreader lights
- Lofrans 500 electric windlass with chain and rope rode
- Stainless steel anchor and chute
- Pop up cleats
- Pop up bow light
- ACR URP-102 remote controlled spotlight
- Cabin overhead hatch
- Bilge blower
- Cockpit table
- Transom fender storage compartment
- Bow side grab rails
- Transom gate
- Port and starboard cockpit bolsters
- Port and starboard swim out ladder brackets and ladder
- Bow anchor locker
- Non-skid decks

## **MECHANICAL EQUIPMENT**

- Cruisair reverse cycle cabin air conditioning
- Fireboy automatic fire extinguishing system
- Latham heavy duty stainless steel steering tie bar
- Trim tabs with indicator gauges

- Two automatic bilge pumps
- Vetus electric bow thruster
- Mercury Smartcraft electronic engine controls
- Mercury Smartcraft engine gauges
- Jabsco electric toilet with holding tank

## EXCLUSIONS

---

Owner's personal effects are excluded from the sale.

## Exclusions

---

Owner's personal belongings.

## Disclaimer

---

The Company offers the details of this vessel or yacht in good faith but cannot guarantee or warrant the accuracy of this information nor warrant the condition of the vessel. A buyer should instruct his representatives, agents, or his surveyors, to investigate such details as the buyer desires validated. This vessel or yacht is offered subject to prior sale, price change, or withdrawal without notice.

# PHOTOS

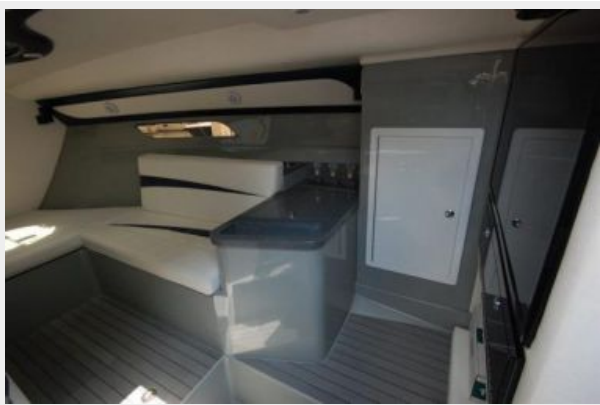














# CONTACTS

---

Andrey Shestakov, leading yacht broker of the sales department of Shestakov Yacht Sales Inc. Shestakov Yacht Sales Inc., the official representative of the Miami/Fort Lauderdale FL headquarters.

## Contact details

---

Email: **andrey@shestakovyachtsales.com**

Web: [shestakovyachtsales.com/en/](http://shestakovyachtsales.com/en/)

## Telephones

---

USA: **+1(954)274-4435**

## Office hours

---

Monday – Saturday: **9:00 - 21:00 EDT**

Sunday: **closed**

## Address

---



Harbour Towne Marina, 850 NE 3rd St,  
STE 213, Dania, FL 33004