

MIGHT AS WELL — OCEAN YACHTS



Builder: [Ocean Yachts](#)

Year Built: 2005

Model: Sport Fisherman

Price: PRICE ON APPLICATION

Location: United States

LOA: 50' 6" (15.39m)

Beam: 16' 9" (5.11m)

Min Draft: 4' 5" (1.35m)

Cruise Speed: 27 Kts. (31 MPH)

Max Speed: 32 Kts. (37 MPH)

Our experienced yacht broker, Andrey Shestakov, will help you choose and buy a yacht that best suits your needs **MIGHT AS WELL — Ocean Yachts** from our catalogue. Presently, at Shestakov Yacht Sales Inc., we have a wide variety of yachts available on our sale's list. We also work in close contact with all the big yacht manufacturers from all over the world.

If you would like to buy a yacht **MIGHT AS WELL — Ocean Yachts** or would like help answering any questions concerning purchasing, selling or chartering a yacht, please call **+1(954)274-4435**

TABLE OF CONTENTS

TABLE OF CONTENTS	2
SPECIFICATIONS	5
Overview	5
Basic Information	5
Dimensions	5
Speed, Capacities and Weight	5
Accommodations	6
Hull and Deck Information	6
Engine Information	6
DETAILED INFORMATION	7
Accommodations	7
Master Stateroom, Amidship	7
Guest Stateroom, Forward	7
Guest Stateroom, Amidship Starboard	8
Salon	8
Master Head	9
Guest Head, Forward Starboard	9
Galley / Laundry, Main Deck, Amidship Port	9
Helm / Electronics and Navigation	9
Deck	10
Engine and Mechanical Equipment	10
Electrical System / Equipment	11
Cockpit / Fishing Equipment	11
Exclusions	11
Salesman's Comments	11
Exclusions	12
Disclaimer	12
PHOTOS	13

Profile 2	13
Profile 3	13
Master Stateroom 1	13
Master Stateroom 2	13
Guest Stateroom, Forward 1	13
Guest Stateroom, Forward 2	13
Guest Stateroom, Starboard 1	14
Guest Stateroom, Starboard 2	14
Guest Stateroom, Starboard 3 - TV	14
Salon 1 - Sofa & Cocktail Table	14
Salon 2 - Sofa	14
Salon 3	14
Salon 4 - Dinette	15
Salon 5	15
Salon 7 - Bose Surround Sound	15
Salon 6 - TV	15
Master Head 1	16
Salon 8 - Ice Maker	16
Master Head 2 - Shower	16
Guest Head 1	16
Guest Head 2 - Shower	17
Galley 1	17
Galley 2	17
Galley 3	17
Laundry - Clothes Washer & Dryer	18
Helm / Electronics & Navigation 1 - Bridge	18
Helm / Electronics & Navigation 3 - Port Radio Box	18
Helm / Electronics & Navigation 2	18
Helm / Electronics & Navigation 5 - Starboard Radio Box	19

Helm / Electronics & Navigation 4	19
Helm / Electronics & Navigation 6	19
Helm / Electronics & Navigation 7	19
Deck 1 - Windlass	19
Deck 2 - New Release Helm Chairs	19
Deck 3 - Forward Bridge Seating	20
Deck 4 - Bridge Storage	20
Engine & Mechanical Equipment 1 - Engine Room	20
Engine & Mechanical Equipment 2 - Port Engine	20
Engine & Mechanical Equipment 3 - Port Engine	20
Engine & Mechanical Equipment 4 - Starboard Engine	20
Engine & Mechanical Equipment 5	21
Engine & Mechanical Equipment 6 - Cruisair	21
Engine & Mechanical Equipment 7	21
Engine & Mechanical Equipment 8	21
Engine & Mechanical Equipment 9	21
Engine & Mechanical Equipment 10	21
Electrical System / Equipment 1 - Generator	22
Electrical System / Equipment 2 - Generator	22
Cockpit / Fishing Equipment 1 - Cockpit	22
Cockpit / Fishing Equipment 2	22
Cockpit / Fishing Equipment 3 - Step Storage	22
Cockpit / Fishing Equipment 4 - Live Well	22
CONTACTS	23
Contact details	23
Telephones	23
Office hours	23
Address	23

SPECIFICATIONS

Overview

The Ocean 50 Super Sport is a true Offshore Battle Wagon! Her luxurious interior makes traveling offshore comfortable. She features the largest Engine Room in this class! Great Cockpit with Blue Water chair. Tournament-style Bridge. Optional "Plan B" Cabin arrangement. Upgraded high gloss teak interior. ***She is clean and ready to fish!!! MAKE OFFERS!!!***

Basic Information

Category: Sport Fisherman

Sub Category: Convertible

Model Year: 2005

Year Built: 2005

Country: United States

Vessel Top: Hardtop

Cockpit: Yes

Dimensions

LOA: 50' 6" (15.39m)

Beam: 16' 9" (5.11m)

Min Draft: 4' 5" (1.35m)

Speed, Capacities and Weight

Cruise Speed: 27 Kts. (31 MPH)

Max Speed: 32 Kts. (37 MPH)

Displacement: 54000 Pounds

Water Capacity: 150 Gallons

Fuel Capacity: 780 Gallons

Accommodations

Total Cabins: 3

Total Berths: 6

Sleeps: 6

Total Heads: 3

Hull and Deck Information

Hull Material: Fiberglass

Deck Material: Fiberglass

Hull Configuration: Modified V-Hull

Hull Color: Light Blue

Engine Information

Engines: 2

Manufacturer: MTU

Model: Series 60

Engine Type: Inboard

Fuel Type: Diesel

DETAILED INFORMATION

Accommodations

Sleeps six owners and guests in three Staterooms for a total of six berths. One Master Head with shower, one Guest Head with shower. Enter the spacious Salon from the starboard side. Her comfortable and well appointed Cabin features an L-shaped sofa to port, barrel chair and TV cabinet to starboard, large functional Galley to port and a dinette on the starboard side. Step down the Companionway to find the Master Stateroom with en-suite Head to port, a Guest Stateroom with side-by-side bunks to starboard and the optional "Plan B" Forward Stateroom with upper and lower bunks and direct access to Guest Head.

Master Stateroom, Amidship

Very comfortable Master Stateroom with Premium Entertainment System, beautiful decor and en-suite Head. Lots of storage!

- Head
- Closet
- Shower
- Storage
- Paneling
- Cabinets
- Carpeting
- Wallpaper
- Queen berth
- 20" LCD TV
- Bose 3-2-1 Surround Sound System
- Air conditioning / heater with controls
- Stereo system w/ CD player, speakers

Guest Stateroom, Forward

Optional "Plan B" Forward Stateroom.

- Head
- Closet
- Shower
- Paneling
- Cabinets
- Carpeting
- Wallpaper

- Night stand
- DVD Player
- 15" LCD TV
- Ample storage
- Hanging locker
- Under bed storage
- Stereo system w/ speakers
- Air conditioning / heater with controls
- Upper berth w/ over-sized lower berth

Guest Stateroom, Amidship Starboard

Best room to snooze in while underway!!!

- 15" TV
- Paneling
- Carpeting
- Wallpaper
- Night stand
- Twin berths
- Hanging locker
- Under bed storage
- Stereo system w/ speakers
- Air conditioning / heater with controls

Salon

Very open Main Cabin features a large L-shaped sofa and a teak-topped cocktail table with storage below! Comfortable barrel chair, TV cabinet, Ice maker and great storage.

- Storage
- Cabinets
- Ice maker
- TV cabinet
- Barrel chair
- DVD Player
- Cable TV hookups
- Dinette w/ teak table
- L-shaped settee w/ storage below
- Air conditioning / heater with controls
- Bose Lifestyle 33 entertainment center
- Stereo system w/ CD player, speakers
- Teak top cocktail table w/ storage below

Master Head

- Sink
- Shower
- Wallpaper
- Exhaust fan
- Amtico flooring
- Medicine cabinet
- Vacu-flush, overboard, recirculating, electric head w/ holding tank

Guest Head, Forward Starboard

- Sink
- Shower
- Wallpaper
- Exhaust fan
- Amtico flooring
- Medicine cabinet
- Vacu-flush, overboard, recirculating, electric head w/ holding tank

Galley / Laundry, Main Deck, Amidship Port

- Sink
- Water heater
- Clothes dryer
- Clothes washer
- Amtico flooring
- Trash compactor
- Garbage disposal
- Drawer-style freezers
- Central vacuum system
- Drawer-style refrigerators
- Four-burner, electric stove
- Pressure fresh water system
- Microwave oven / Convection oven

Helm / Electronics and Navigation

- Transducer
- 4" Compass
- Standard Hailer

- Furuno Sea temp
- Furuno Fish finder
- Furuno 64nm Radar
- Furuno GPS / Plotter
- Icom 604 VHF Radio
- ACR RL-100 Spot light
- Simrad AP26 Auto pilot
- Raymarine Tri-Data 1964 Speed & distance logs
- 12v Stereo system with AM / FM radio, CD player
- (2) Furuno 10" Displays feature Network GPS / Plotter / Color 64nm Radar / 1kW Sounder

Deck

- Anchor davit
- Bridge curtain
- Transom door
- Spreader lights
- (6) Life jackets
- Navigation lights
- Lewmar windlass
- Bow pulpit w/ rails
- Anchor w/ 150' lines
- (2) Blue Water Helm seats (new 2013)
- Single, fixed, electric search light w/ remote control
- Fresh water, salt water, pressure Deck wash down system
- EZ2CY Enclosure w/ air vents front three sides, Strata Glass aft enclosure

Engine and Mechanical Equipment

- Trim tabs
- Fire alarm
- Racor fuel filters
- (2) Bilge blowers
- Fuel prime pumps
- Oil pressure alarm
- Oil transfer system
- Fire control system
- Fresh water cooling
- Engine synchronizers
- Bridge engine controls
- Hydraulic, wheel steering
- Engine fuel shut-off valve

- Engine temperature alarm
- Reverse cycle air conditioner
- Thermal, acoustical insulation
- (3) Automatic, manual bilge pumps
- CO2, automatic fire control system
- Custom rod storage in Engine Room
- Twin 825 hp. Diesel I/B 2005 MTU Series 60's w/ 815 hrs.

Electrical System / Equipment

- (8) Batteries
- Dockside cables
- Battery parallel switch
- Automatic battery charger
- 12v, 24v DC electrical system
- 110v, 220v AC electrical system
- Onan 12.5kW generator w/ 1070 hrs.

Cockpit / Fishing Equipment

- Bait freezer
- Cockpit sink
- Live fish well
- Transom door
- (2) Fish boxes
- (10) Rod holders
- Rupp 36' outriggers
- Three-drawer tackle locker
- Pair of under water lights (new 2014)
- 6-rod Rocket launcher (aft Bridge rail)
- Blue Water Unlimited Class fighting chair

Exclusions

Owner's personal gear and items.

Salesman's Comments

The Ocean 50 Super Sport is a true Offshore Battle Wagon! Her luxurious interior makes traveling offshore comfortable. She features the largest Engine Room in this class! Great

Cockpit with Blue Water chair. Tournament-style Bridge. Optional "Plan B" Cabin arrangement. Upgraded high gloss teak interior. ***She is clean and ready to fish!!! MAKE OFFERS!!!***

Exclusions

Owner's personal belongings.

Disclaimer

The Company offers the details of this vessel or yacht in good faith but cannot guarantee or warrant the accuracy of this information nor warrant the condition of the vessel. A buyer should instruct his representatives, agents, or his surveyors, to investigate such details as the buyer desires validated. This vessel or yacht is offered subject to prior sale, price change, or withdrawal without notice.

PHOTOS

Profile 2



Profile 3



Master Stateroom 1



Master Stateroom 2



Guest Stateroom, Forward 1



Guest Stateroom, Forward 2



Guest Stateroom, Starboard 1



Guest Stateroom, Starboard 2



Guest Stateroom, Starboard 3 - TV



Salon 1 - Sofa & Cocktail Table



Salon 2 - Sofa



Salon 3



Salon 4 - Dinette



Salon 5



Salon 7 - Bose Surround Sound

Salon 6 - TV



Salon 8 - Ice Maker



Master Head 1



Master Head 2 - Shower



Guest Head 1



Guest Head 2 - Shower



Galley 1



Galley 2



Galley 3



Laundry - Clothes Washer & Dryer



Helm / Electronics & Navigation 1 - Bridge



Helm / Electronics & Navigation 2



Helm / Electronics & Navigation 3 - Port Radio Box



Helm / Electronics & Navigation 4



**Helm / Electronics & Navigation 5 -
Starboard Radio Box**



Helm / Electronics & Navigation 6



Helm / Electronics & Navigation 7



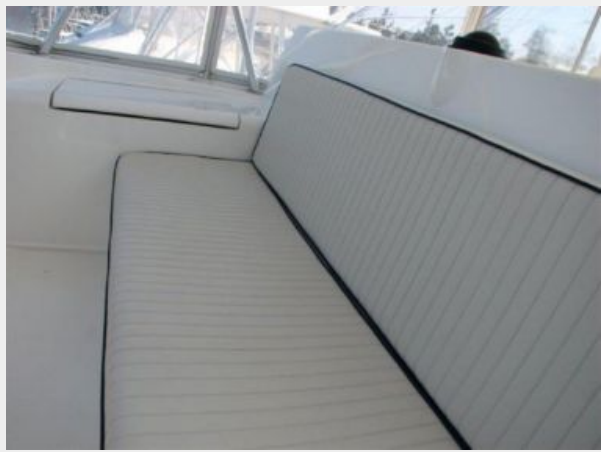
Deck 1 - Windlass



Deck 2 - New Release Helm Chairs



Deck 3 - Forward Bridge Seating



Deck 4 - Bridge Storage



Engine & Mechanical Equipment 1 - Engine Room



Engine & Mechanical Equipment 2 - Port Engine



Engine & Mechanical Equipment 3 - Port Engine



Engine & Mechanical Equipment 4 - Starboard Engine



Engine & Mechanical Equipment 5



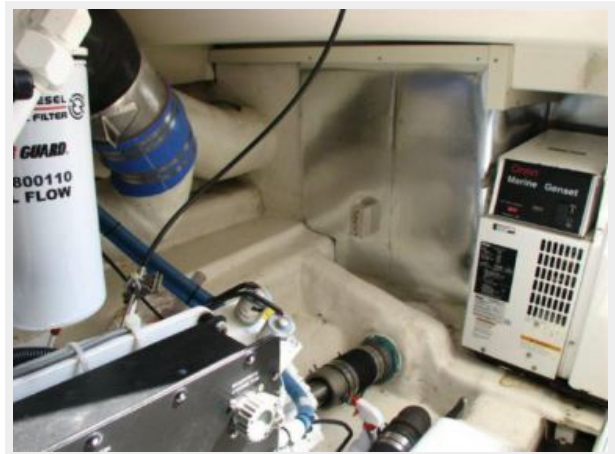
Engine & Mechanical Equipment 6 - Cruisair



Engine & Mechanical Equipment 7



Engine & Mechanical Equipment 8



Engine & Mechanical Equipment 9



Engine & Mechanical Equipment 10



Electrical System / Equipment 1 - Generator Electrical System / Equipment 2 - Generator



Cockpit / Fishing Equipment 1 - Cockpit



Cockpit / Fishing Equipment 2



Cockpit / Fishing Equipment 3 - Step Storage



Cockpit / Fishing Equipment 4 - Live Well



CONTACTS

Andrey Shestakov, leading yacht broker of the sales department of Shestakov Yacht Sales Inc. Shestakov Yacht Sales Inc., the official representative of the Miami/Fort Lauderdale FL headquarters.

Contact details

Email: andrey@shestakovyachtsales.com

Web: shestakovyachtsales.com/en/

Telephones

USA: +1(954)274-4435

Office hours

Monday – Saturday: **9:00 - 21:00** EDT

Sunday: **closed**

Address



Harbour Towne Marina, 850 NE 3rd St,
STE 213, Dania, FL 33004