

## CHARDONNAY — SEA RAY



**Builder:** SEA RAY

**Year Built:** 2002

**Model:** Cruiser

**Price:** PRICE ON APPLICATION

**Location:** United States

**LOA:** 46' 0" (14.02m)

**Beam:** 14' 8" (4.47m)

**Max Draft:** 3' 7" (1.09m)

Our experienced yacht broker, Andrey Shestakov, will help you choose and buy a yacht that best suits your needs **Chardonnay — SEA RAY** from our catalogue. Presently, at Shestakov Yacht Sales Inc., we have a wide variety of yachts available on our sale's list. We also work in close contact with all the big yacht manufacturers from all over the world.

If you would like to buy a yacht **Chardonnay — SEA RAY** or would like help answering any questions concerning purchasing, selling or chartering a yacht, please call **+1(954)274-4435**

---

# TABLE OF CONTENTS

---

|                              |    |
|------------------------------|----|
| TABLE OF CONTENTS            | 2  |
| SPECIFICATIONS               | 3  |
| Basic Information            | 3  |
| Dimensions                   | 3  |
| Speed, Capacities and Weight | 3  |
| Hull and Deck Information    | 3  |
| Engine Information           | 3  |
| DETAILED INFORMATION         | 4  |
| ENGINE ROOM                  | 4  |
| Electronics                  | 4  |
| Deck                         | 4  |
| Cabin                        | 4  |
| Exclusions                   | 5  |
| Disclaimer                   | 5  |
| PHOTOS                       | 6  |
| CONTACTS                     | 12 |
| Contact details              | 12 |
| Telephones                   | 12 |
| Office hours                 | 12 |
| Address                      | 12 |

---

# SPECIFICATIONS

---

## Basic Information

---

**Category:** Cruiser

**Sub Category:** Express

**Model Year:** 2002

**Year Built:** 2002

**Country:** United States

## Dimensions

---

**LOA:** 46' 0" (14.02m)

**LWL:** 45' 6" (13.87m)

**Beam:** 14' 8" (4.47m)

**Max Draft:** 3' 7" (1.09m)

## Speed, Capacities and Weight

---

**Displacement:** 28000 Pounds

## Hull and Deck Information

---

**Hull Material:** Fiberglass

## Engine Information

---

**Engines:** 2

**Manufacturer:** Cummins

**Model:** 6CTA 8.3 M-3

**Engine Type:** Inboard

**Fuel Type:** Diesel

---

# DETAILED INFORMATION

---

## ENGINE ROOM

---

- Cummins 6CTA 8.3 M-3 975 hours
- Fuel Flow Scans
- Engine Synchronizer
- Airsep Air Filter
- Oil Transfer Pump
- Racor Fuel Filters
- Glenndening Cable Master
- Westerbeke Generator 775 hours
- Hot Water Heater
- 2 - 200 Gal. Fuel Tanks
- Waste 60 Gal.

## Electronics

---

- Garmin 2010C Plotter
- Raytheon RL80C Plotter/Radar
- Raytheon VHF 220
- Raytheon ST60 Tri Data
- Raytheon GPS 300
- Raytheon ST 7000 Auto Pilot

## Deck

---

- Electric Windlass
- LCR Spot Light
- Bow Thruster
- Air Conditioned Helm
- Fresh Canvas

## Cabin

---

- Refrigerator/Freezer
- Toshiba Flatscreen TV
- Microway Oven
- Coffee Maker
- Teak & Holly Floor

- Electric Stove
- Two Vacu Flush Heads
- Toshiba Flat Screen in Master Stateroom
- Central Vacuum
- Reverse Cycle A/C 16,000 BTU Main Salon 12,000 BTU Master Stateroom
- 100 Gal. Water Tank
- Washer/Dryer

## **Exclusions**

---

Owner's personal belongings.

## **Disclaimer**

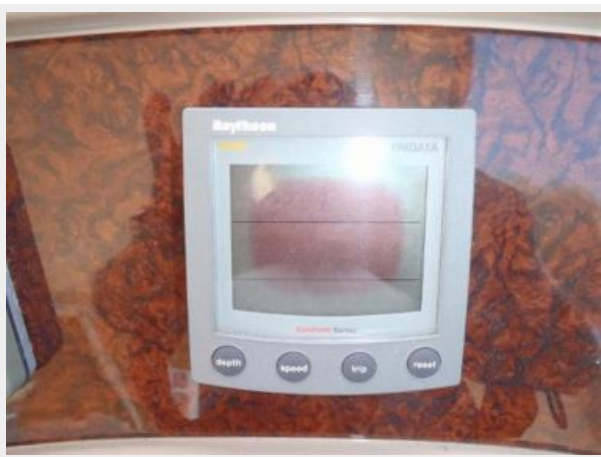
---

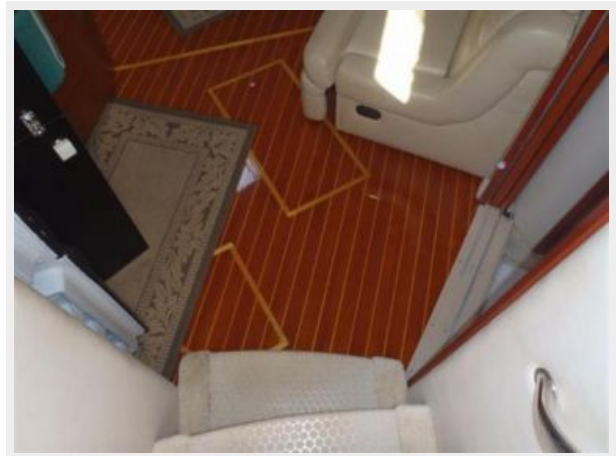
The Company offers the details of this vessel or yacht in good faith but cannot guarantee or warrant the accuracy of this information nor warrant the condition of the vessel. A buyer should instruct his representatives, agents, or his surveyors, to investigate such details as the buyer desires validated. This vessel or yacht is offered subject to prior sale, price change, or withdrawal without notice.

# PHOTOS



















---

# CONTACTS

---

Andrey Shestakov, leading yacht broker of the sales department of Shestakov Yacht Sales Inc. Shestakov Yacht Sales Inc., the official representative of the Miami/Fort Lauderdale FL headquarters.

---

## Contact details

---

Email: [andrey@shestakovyachtsales.com](mailto:andrey@shestakovyachtsales.com)

Web: [shestakovyachtsales.com/en/](http://shestakovyachtsales.com/en/)

---

## Telephones

---

USA: +1(954)274-4435

---

## Office hours

---

Monday – Saturday: **9:00 - 21:00** EDT

Sunday: **closed**

---

## Address

---



Harbour Towne Marina, 850 NE 3rd St,  
STE 213, Dania, FL 33004