

ACHARNE — NEW ENGLAND BOATWORKS



Builder: NEW ENGLAND BOATWORKS

Year Built: 1999

Model: Motor Yacht

Price: PRICE ON APPLICATION

Location: Antigua and Barbuda

LOA: 80' 0" (24.38m)

Beam: 16' 6" (5.03m)

Min Draft: 6' 6" (1.98m)

Cruise Speed: 9 Kts. (10 MPH)

Max Speed: 10 Kts. (12 MPH)

Our experienced yacht broker, Andrey Shestakov, will help you choose and buy a yacht that best suits your needs **ACHARNE — NEW ENGLAND BOATWORKS** from our catalogue. Presently, at Shestakov Yacht Sales Inc., we have a wide variety of yachts available on our sale's list. We also work in close contact with all the big yacht manufacturers from all over the world.

If you would like to buy a yacht **ACHARNE — NEW ENGLAND BOATWORKS** or would like help answering any questions concerning purchasing, selling or chartering a yacht, please call **+1(954)274-4435**

TABLE OF CONTENTS

TABLE OF CONTENTS	2
SPECIFICATIONS	4
Basic Information	4
Dimensions	4
Speed, Capacities and Weight	4
Accommodations	4
Hull and Deck Information	4
Engine Information	5
DETAILED INFORMATION	6
Broker's Comments	6
Introduction	6
Construction	6
Machinery	7
Electrical Systems	8
Plumbing Systems	9
Tankage	9
Navigation Equipment	10
Domestic Equipment	11
Accommodation	12
Deck Equipment	12
Exclusions	14
Disclaimer	14
PHOTOS	15
CONTACTS	20
Contact details	20
Telephones	20
Office hours	20
Address	20

SPECIFICATIONS

Basic Information

Category: Motor Yacht

Sub Category: Displacement

Model Year: 1999

Year Built: 1999

Refit Year: 2014

Country: Antigua and Barbuda

Dimensions

LOA: 80' 0" (24.38m)

LOD: 78' 0" (23.77m)

Beam: 16' 6" (5.03m)

Min Draft: 6' 6" (1.98m)

Speed, Capacities and Weight

Cruise Speed: 9 Kts. (10 MPH)

Cruise Speed RPM: 1600 Kts.

Max Speed: 10 Kts. (12 MPH)

Max Speed RPM: 2400 Kts.

Displacement: 37998.87547832 Pounds

Water Capacity: 140.01118756 Gallons

Holding Tank: 50.19268988 Gallons

Fuel Capacity: 713.2645404 Gallons

Accommodations

Total Cabins: 2

Total Berths: 4

Total Heads: 2

Hull and Deck Information

Hull Material: Composite

Deck Material: Composite

Hull Finish: Aluminum

Hull Designer: Bill Langen

Engine Information

Engines: 1

Manufacturer: Cummins

Model: 6BT 5.9l

Engine Type: Inboard

Fuel Type: Diesel

DETAILED INFORMATION

Broker's Comments

There is absolutely nothing ordinary about ARCHARNE! A rugged and dependable motor yacht for short handed explorers, she has a comfortable interior and simplicity is her watchword. She runs on fumes and really goes to prove that special yachts can have a successful second life if the makeover is properly managed. She is also very accessible in price terms and we are excited about the possibilities that she offers.

Introduction

- **LIGHT** : Fine entry and long waterline 80 feet/ 20 tons fully loaded
- **EASY** :operated only by two people without any crew; low maintenance on very simple mechanical systems with a practical light weight interior.
- **SPEED** : 2.6 g/per/hour 9 knot up wind cruising speed, 2.2 g/per/hour 12 knot or more downwind cruising speed. The lowest carbon foot print and fuel consumption possible for a fast ocean going powerboat capable of long passages.
- **SPACE** : An immense back deck, a trademark of Ocean Voyager with comfortable outside accommodation, water access for diving, easy dinghy retrieval and storage on deck, deck stowage for a good size tender and one motorcycle plus easy access to the dive compressor and dive gear.
- **GREEN** : very large solar panel arrays, Ocean voyager has achieved a zero diesel charging electrical system at anchor with limited daylight air conditioning operated by solar. A new milestone.
- **STABILITY** : This was achieved with low displacement, inherent stability from low deck and cabin weight plus inside and outside ballast. Hydraulic fin stabilizers for comfort, not for safety.

Construction

RCD Status: The yacht conforms with the essential safety requirements of Directive 94/25EC (Recreational Craft Directive) and is categorised A – “Ocean” (or Cat B – whichever is appropriate)

Hull, Deck & Superstructure Construction:

- Hull/Deck: Carbon/Nomex composite/epoxy/vacuumed/baked.
- Pilothouse: Divynacell/Epoxy/Biaxial glass/Nidacore.
- Decks: Carbon/Nomex/Epoxy.
- Paint: Grey/White/LP.
- Tonnage: 43 gross tons; 38 net tons; 19 displacement tons.
- 5000# outside steel keel, 6000# inside lead ballast.

Machinery

Engine & Gearboxes:

- 1 x Cummins 6BT 5.9l turbo-charged 210hp @2,600 rpm with mechanical fuel system.
- Morse engine controls.
- Flex mounts and vibration damper engine mounts.
- ZF 2:1 ratio gearbox.

Maintenance & Performance:

- Engine Hours: 400 hours at November 2014.
- Maximum: 10 knots / 6 gph at 2,400RPM.
- Cruising: 9 knots / 3 gph at 1,600RPM with 2,330nm (no reserve).
- Economical: 8 knots / 2 gph at 1,450RPM with 2,800nm (no reserve).

Propulsion & Steering:

- PSS dripless stuffing back; (1) $\frac{3}{4}$ Nibral.
- Michigan 26" x 26" 4-bladed propeller.
- Wesmar 15 hp bow thruster, 24V counter rotating prop bow thruster.
- Steering system is Chain/Dynema/Quadrant system with 2 carbon steering wheels with direct drive Jefa.

- Autopilot drive as secondary steering.
- Helm controls at helm with Simrad wifi control.

Other Mechanical Equipment:

- Portable air compressor.
- Direct drive engine mounted hydraulic pump for fin stabilizers.
- Transmission oil cooler.
- TRAC 8 sq.ft. stabilizers powered by main engine.

Electrical Systems

Voltage Systems:

- 12V DC system.
- 110V AC system, 30- amp shore power inlet.
- 220/240V AC 50/60 Hz system (vessel will function on US or European power).

Battery Banks:

- (8) Deka L-16 batteries 400-amp hr. each at 6 V.
- (1) 8D Main start.
- (1) 4D Generator start.
- (2) AGM 12V batteries for bow thruster and anchor windlass.

Battery Chargers:

- (2) Mastervolt 220/240, 100-amp, 60/60 Hz battery chargers.
- Mastervolt charger.

Generator:

- MASE Yanmar 8 KW generator with sound shield (420 hours). Fiberglass generator exhaust water separator with under water exhaust with by-pass.

Shore Power:

- 110V AC/220/240V AC shore power.

Other Electrical:

- Dual Outback solar controllers, 2200 watts (6 X 240W + 3 X 200W).
- (1) Zantrex 2000-watt 110V inverter (dedicated for house 110V).
- (1) 5000 watt 24V/240V inverter (dedicated for watermaker or air conditioning).
- Start battery isolator.
- Engine and generator spare inventory.

Plumbing Systems

Fresh Water & Water Heating System:

- 10-Gallon 220V/240V AC hot water heater.
- (1) 400-watt 220V/240V AC instant hot water heater.

Watermaker:

- Watermakers Inc. 220V/240V, 50/60 Hz, 35 gal/hr watermaker.

Bilge Pumps:

- (3) Rule bilge pumps.

Tankage

Fuel:

- Total capacity of 2,700 litres in 4 x tanks + 1 x reserve tank. Aluminium.
- 12V DC electric fuel priming pump.
- Dual Racor water separators fuel filters.
- FloScan fuel consumption monitor.

Fresh water:

- Total capacity of 530 litres in 2 x aluminium tanks.

Grey/Blackwater holding tanks:

- Total capacity of 190 litres in 2 x tanks.

Navigation Equipment

- Matrix fixed VHF with AIS receiver.
- Hand-held remote cockpit VHF remote monitor.
- Built-in long range, amplified wi-fi system.
- Fully networked electronics.
- Garmin 48-mile HD radar.
- Radar reflector.
- Simrad and (2) Plastimo magnetic compasses.
- Simrad AP28 autopilot. Pilothouse remote wireless autopilot controller. (1) Jefa autopilot drive (electric back-up steering system).
- Simrad depth sounder.
- Simrad GPS.
- Garmin 6012 plotter with GPS. Pilothouse remote plotter monitor.
- Simrad wind and depth instruments standard.
- Simrad speed indicator.

- AIS standard receiver.
- Clock.
- Barometer.

Domestic Equipment

Galley:

- Force-10 propane 3-burner oven/stove. Propane control system with remote solenoid.
- Microwave.
- (1) On-deck propane tank.
- (2) Showers with sump pumps.
- (2) Jabsco 12V heads.
- (4) Interior fans.
- (6) 22" X 8" stainless steel opening ports.
- Various small skylights.
- LG washing machine.

Heating & Ventilation:

- (2) OceanAire 22,000 BTU, 220/240 VAC air conditioning units.

Entertainment:

- Visio 42" flat screen TV.
- Bluray DVD.

Lighting:

- 100% LED lighting.

Accommodation

Summary of Accommodation:

- (2) Double queen berth staterooms with 2 adjoining heads with showers.
- Forward crew berth forward (accessible by deck hatch).
- Large living areas with 42" LCD TV and Blue-Ray player.

Headroom:

- Forward cabin: 6'1".
- Galley: 6'2".
- Lower Salon: 6'4" to 8'10".
- Pilothouse: 6'7".
- Aft Cabin: 5'11".

Deck Equipment

General:

- (12) Aluminum deck hatches.
- (4) Stainless steel ports.
- Large swim ladder aft.
- Forward carbon fiber mast with 3 X LED anti-collision/search lights.
- Aluminum swim platform.
- Grey LP exterior paint.
- Bluewater Ultra underwater paint.
- 12V Water wash down system with deck wash.
- 1/2" tinted tempered pilothouse window glass.

Anchoring & Mooring Equipment:

- Bruce anchor, 170 lb. (80 kg).
- (1) Fortress FX-85 anchor with chain and 300' nylon rode.
- (1) Danforth small anchor with chain and rode.
- 375' (100m) 7/16" G- anchor chain.
- (1) Lewmar chain stopper.
- Helm anchor windlass control.
- Lewmar 24V anchor windlass with 2 dedicated 8D gel cell batteries and 220 VAC/24VAC, 50-amp/24V.
- Self-tailing deck winch.

Tender & Outboard:

- Nautical Structure 600# 12V tender crane with remote cable.
- AB 13.4m inflatable tender with Yamaha 20 hp, 4-stroke engine
- NU-Air div tank compressor 220/240 VAC with stainless steel frame.
- (4) Yellow aluminum dive tanks in racks.
- Kayak.

Safety Equipment:

- Revere 6-man offshore life raft in canister.
- Dynema Life lines.
- Satfind EPIRB.
- Flares.

Fire-fighting equipment:

- Hand-held fire fighting equipment.
- (4) Fire extinguishers.

- Smoke/CO2 alarms.

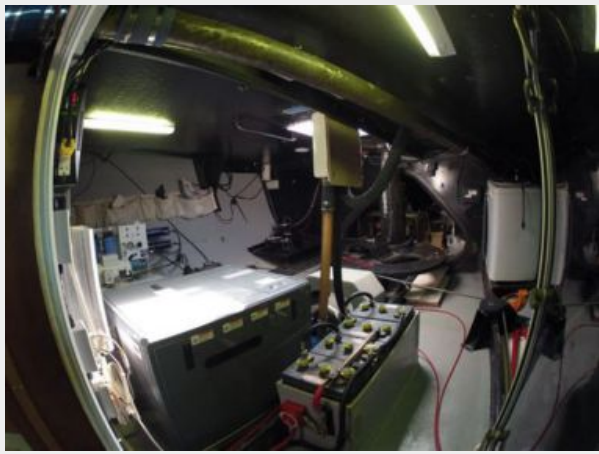
Exclusions

Owner's personal belongings.

Disclaimer

The Company offers the details of this vessel or yacht in good faith but cannot guarantee or warrant the accuracy of this information nor warrant the condition of the vessel. A buyer should instruct his representatives, agents, or his surveyors, to investigate such details as the buyer desires validated. This vessel or yacht is offered subject to prior sale, price change, or withdrawal without notice.

PHOTOS











CONTACTS

Andrey Shestakov, leading yacht broker of the sales department of Shestakov Yacht Sales Inc. Shestakov Yacht Sales Inc., the official representative of the Miami/Fort Lauderdale FL headquarters.

Contact details

Email: andrey@shestakovyachtsales.com

Web: shestakovyachtsales.com/en/

Telephones

USA: +1(954)274-4435

Office hours

Monday – Saturday: **9:00 - 21:00** EDT

Sunday: **closed**

Address



Harbour Towne Marina, 850 NE 3rd St,
STE 213, Dania, FL 33004