

ACHARNE — NEW ENGLAND BOATWORKS



Судостроитель:
NEW ENGLAND BOATWORKS

Год постройки: 1999

Модель: Моторная яхта

Цена: ЦЕНА ЯХТЫ ПО ЗАПРОСУ

Местонахождение: Antigua and Barbuda

Длина общая: 80' 0" (24.38m)

Ширина: 16' 6" (5.03m)

Мин. осадка: 6' 6" (1.98m)

Крейс. скорость: 9 Kts. (10 MPH)

Макс. скорость: 10 Kts. (12 MPH)

Купить **ACHARNE — NEW ENGLAND BOATWORKS** а также выбрать подходящую вам яхту из нашего каталога яхт вам поможет опытный яхтенный брокер Андрей Шестаков. На сегодняшний день компания **Shestakov Yacht Sales Inc.** имеет большое количество яхт в собственном списке продаж, а также тесно сотрудничает со всеми крупными яхтенными производителями по всему миру. Для того чтобы купить яхту **ACHARNE — NEW ENGLAND BOATWORKS** а также проконсультироваться по любому вопросу связанному с покупкой, продажей, чартером яхт позвоните по телефону **+7(918)465-66-44**.

ОГЛАВЛЕНИЕ

ОГЛАВЛЕНИЕ	2
ХАРАКТЕРИСТИКИ	4
Основная информация	4
Размеры	4
Скорость, вместимость и масса	4
Размещение	4
Корпус и палуба	5
Информация о двигателе	5
ПОДРОБНОЕ ОПИСАНИЕ	6
Broker's Comments	6
Introduction	6
Construction	6
Machinery	7
Electrical Systems	8
Plumbing Systems	9
Tankage	9
Navigation Equipment	10
Domestic Equipment	11
Accommodation	12
Deck Equipment	12
Исключения	14
Отказ от ответственности	14
ФОТОГРАФИИ	15
КОНТАКТЫ	20
Контактная информация	20
Телефоны	20
Время работы	20
Адрес	20

ХАРАКТЕРИСТИКИ

Основная информация

Тип судна: Моторная яхта

Подкатегория: Водоизмещение

Модельный год: 1999

Год постройки: 1999

Год обновления: 2014

Страна: Antigua and Barbuda

Размеры

Длина общая: 80' 0" (24.38m)

Длина палубы: 78' 0" (23.77m)

Ширина: 16' 6" (5.03m)

Мин. осадка: 6' 6" (1.98m)

Скорость, вместимость и масса

Крейс. скорость: 9 Kts. (10 MPH)

Крейсерская скорость поворота: 1600 Kts.

Макс. скорость: 10 Kts. (12 MPH)

Макс. скорость поворота: 2400 Kts.

Водоизмещение: 37998.87547832 Pounds

Вместимость воды: 140.01118756 Gallons

Вместимость сточного бака: 50.19268988 Gallons

Объем топливного бака: 713.2645404 Gallons

Размещение

Всего кают: 2

Всего коек: 4

Всего ком. состава: 2

Корпус и палуба

Материал корпуса: Composite

Материал палубы: Composite

Отделка корпуса: Aluminum

Дизайнер корпуса: Bill Langen

Информация о двигателе

Двигатели: 1

Производитель: Cummins

Модель: 6BT 5.9I

Тип двигателя: Inboard

Тип топлива: Diesel

ПОДРОБНОЕ ОПИСАНИЕ

Broker's Comments

There is absolutely nothing ordinary about ARCHARNE! A rugged and dependable motor yacht for short handed explorers, she has a comfortable interior and simplicity is her watchword. She runs on fumes and really goes to prove that special yachts can have a successful second life if the makeover is properly managed. She is also very accessible in price terms and we are excited about the possibilities that she offers.

Introduction

- **LIGHT** : Fine entry and long waterline 80 feet/ 20 tons fully loaded
- **EASY** :operated only by two people without any crew; low maintenance on very simple mechanical systems with a practical light weight interior.
- **SPEED** : 2.6 g/per/hour 9 knot up wind cruising speed, 2.2 g/per/hour 12 knot or more downwind cruising speed. The lowest carbon foot print and fuel consumption possible for a fast ocean going powerboat capable of long passages.
- **SPACE** : An immense back deck, a trademark of Ocean Voyager with comfortable outside accommodation, water access for diving, easy dinghy retrieval and storage on deck, deck stowage for a good size tender and one motorcycle plus easy access to the dive compressor and dive gear.
- **GREEN** : very large solar panel arrays, Ocean voyager has achieved a zero diesel charging electrical system at anchor with limited daylight air conditioning operated by solar. A new milestone.
- **STABILITY** : This was achieved with low displacement, inherent stability from low deck and cabin weight plus inside and outside ballast. Hydraulic fin stabilizers for comfort, not for safety.

Construction

RCD Status: The yacht conforms with the essential safety requirements of Directive 94/25EC (Recreational Craft Directive) and is categorised A – “Ocean” (or Cat B – whichever is appropriate)

Hull, Deck & Superstructure Construction:

- Hull/Deck: Carbon/Nomex composite/epoxy/vacuumed/baked.
- Pilothouse: Divynacell/Epoxy/Biaxial glass/Nidacore.
- Decks: Carbon/Nomex/Epoxy.
- Paint: Grey/White/LP.
- Tonnage: 43 gross tons; 38 net tons; 19 displacement tons.
- 5000# outside steel keel, 6000# inside lead ballast.

Machinery

Engine & Gearboxes:

- 1 x Cummins 6BT 5.9l turbo-charged 210hp @2,600 rpm with mechanical fuel system.
- Morse engine controls.
- Flex mounts and vibration damper engine mounts.
- ZF 2:1 ratio gearbox.

Maintenance & Performance:

- Engine Hours: 400 hours at November 2014.
- Maximum: 10 knots / 6 gph at 2,400RPM.
- Cruising: 9 knots / 3 gph at 1,600RPM with 2,330nm (no reserve).
- Economical: 8 knots / 2 gph at 1,450RPM with 2,800nm (no reserve).

Propulsion & Steering:

- PSS dripless stuffing back; (1) $\frac{3}{4}$ Nibral.
- Michigan 26" x 26" 4-bladed propeller.
- Wesmar 15 hp bow thruster, 24V counter rotating prop bow thruster.
- Steering system is Chain/Dynema/Quadrant system with 2 carbon steering wheels with direct drive Jefa.

- Autopilot drive as secondary steering.
- Helm controls at helm with Simrad wifi control.

Other Mechanical Equipment:

- Portable air compressor.
- Direct drive engine mounted hydraulic pump for fin stabilizers.
- Transmission oil cooler.
- TRAC 8 sq.ft. stabilizers powered by main engine.

Electrical Systems

Voltage Systems:

- 12V DC system.
- 110V AC system, 30- amp shore power inlet.
- 220/240V AC 50/60 Hz system (vessel will function on US or European power).

Battery Banks:

- (8) Deka L-16 batteries 400-amp hr. each at 6 V.
- (1) 8D Main start.
- (1) 4D Generator start.
- (2) AGM 12V batteries for bow thruster and anchor windlass.

Battery Chargers:

- (2) Mastervolt 220/240, 100-amp, 60/60 Hz battery chargers.
- Mastervolt charger.

Generator:

- MASE Yanmar 8 KW generator with sound shield (420 hours). Fiberglass generator exhaust water separator with under water exhaust with by-pass.

Shore Power:

- 110V AC/220/240V AC shore power.

Other Electrical:

- Dual Outback solar controllers, 2200 watts (6 X 240W + 3 X 200W).
- (1) Zantrex 2000-watt 110V inverter (dedicated for house 110V).
- (1) 5000 watt 24V/240V inverter (dedicated for watermaker or air conditioning).
- Start battery isolator.
- Engine and generator spare inventory.

Plumbing Systems

Fresh Water & Water Heating System:

- 10-Gallon 220V/240V AC hot water heater.
- (1) 400-watt 220V/240V AC instant hot water heater.

Watermaker:

- Watermakers Inc. 220V/240V, 50/60 Hz, 35 gal/hr watermaker.

Bilge Pumps:

- (3) Rule bilge pumps.

Tankage

Fuel:

- Total capacity of 2,700 litres in 4 x tanks + 1 x reserve tank. Aluminium.
- 12V DC electric fuel priming pump.
- Dual Racor water separators fuel filters.
- FloScan fuel consumption monitor.

Fresh water:

- Total capacity of 530 litres in 2 x aluminium tanks.

Grey/Blackwater holding tanks:

- Total capacity of 190 litres in 2 x tanks.

Navigation Equipment

- Matrix fixed VHF with AIS receiver.
- Hand-held remote cockpit VHF remote monitor.
- Built-in long range, amplified wi-fi system.
- Fully networked electronics.
- Garmin 48-mile HD radar.
- Radar reflector.
- Simrad and (2) Plastimo magnetic compasses.
- Simrad AP28 autopilot. Pilothouse remote wireless autopilot controller. (1) Jefa autopilot drive (electric back-up steering system).
- Simrad depth sounder.
- Simrad GPS.
- Garmin 6012 plotter with GPS. Pilothouse remote plotter monitor.
- Simrad wind and depth instruments standard.
- Simrad speed indicator.

- AIS standard receiver.
- Clock.
- Barometer.

Domestic Equipment

Galley:

- Force-10 propane 3-burner oven/stove. Propane control system with remote solenoid.
- Microwave.
- (1) On-deck propane tank.
- (2) Showers with sump pumps.
- (2) Jabsco 12V heads.
- (4) Interior fans.
- (6) 22" X 8" stainless steel opening ports.
- Various small skylights.
- LG washing machine.

Heating & Ventilation:

- (2) OceanAire 22,000 BTU, 220/240 VAC air conditioning units.

Entertainment:

- Visio 42" flat screen TV.
- Bluray DVD.

Lighting:

- 100% LED lighting.

Accommodation

Summary of Accommodation:

- (2) Double queen berth staterooms with 2 adjoining heads with showers.
- Forward crew berth forward (accessible by deck hatch).
- Large living areas with 42" LCD TV and Blue-Ray player.

Headroom:

- Forward cabin: 6'1".
- Galley: 6'2".
- Lower Salon: 6'4" to 8'10".
- Pilothouse: 6'7".
- Aft Cabin: 5'11".

Deck Equipment

General:

- (12) Aluminum deck hatches.
- (4) Stainless steel ports.
- Large swim ladder aft.
- Forward carbon fiber mast with 3 X LED anti-collision/search lights.
- Aluminum swim platform.
- Grey LP exterior paint.
- Bluewater Ultra underwater paint.
- 12V Water wash down system with deck wash.
- 1/2" tinted tempered pilothouse window glass.

Anchoring & Mooring Equipment:

- Bruce anchor, 170 lb. (80 kg).
- (1) Fortress FX-85 anchor with chain and 300' nylon rode.
- (1) Danforth small anchor with chain and rode.
- 375' (100m) 7/16" G- anchor chain.
- (1) Lewmar chain stopper.
- Helm anchor windlass control.
- Lewmar 24V anchor windlass with 2 dedicated 8D gel cell batteries and 220 VAC/24VAC, 50-amp/24V.
- Self-tailing deck winch.

Tender & Outboard:

- Nautical Structure 600# 12V tender crane with remote cable.
- AB 13.4m inflatable tender with Yamaha 20 hp, 4-stroke engine
- NU-Air div tank compressor 220/240 VAC with stainless steel frame.
- (4) Yellow aluminum dive tanks in racks.
- Kayak.

Safety Equipment:

- Revere 6-man offshore life raft in canister.
- Dynema Life lines.
- Satfind EPIRB.
- Flares.

Fire-fighting equipment:

- Hand-held fire fighting equipment.
- (4) Fire extinguishers.

- Smoke/CO2 alarms.

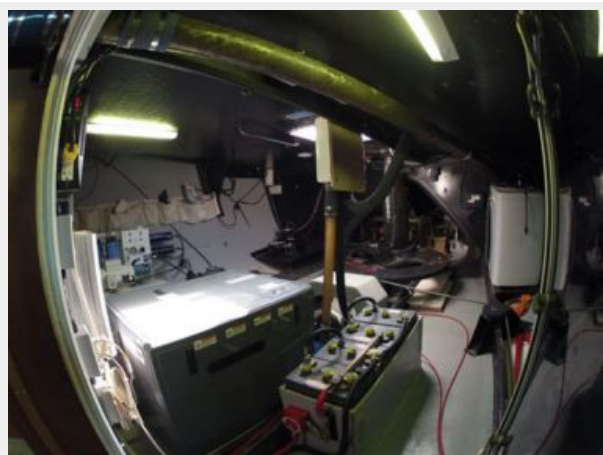
Исключения

При продаже яхты исключаются личные вещи владельца.

Отказ от ответственности

Компания предоставляет описание судна или яхты добросовестно, но не может гарантировать точность этой информации, а также не ручается за техническое состояние. Покупатель должен проинструктировать своих агентов или оценщиков исследовать представленную информацию более подробно, по собственному желанию. Продажа судна или яхты, изменение цены или снятие с продажи будет происходить без предварительного уведомления.

ФОТОГРАФИИ











КОНТАКТЫ

Андрей Шестаков (Andrey Shestakov) – ведущий яхтенный брокер отдела продаж яхт и судов компании Shestakov Yacht Sales Inc. Официальный представитель Shestakov Yacht Sales Inc. для русскоговорящих клиентов в центральном офисе компании в Майами/Форт Лодердейл/Флорида/США.

Контактная информация

Email: andrey@shestakovyachtsales.com

Web: shestakovyachtsales.com

Телефоны

Краснодарский край: **+7(918)465-66-44**

США, Майами, Флорида: **+1(954)274-4435**

Время работы

Понедельник – Суббота: **9:00 - 21:00**
EDT

Воскресенье: **Закрето**

Адрес



Harbour Towne Marina, 850 NE 3rd St,
STE 213, Dania, FL 33004