

LADY Z — VIKING



Builder: [VIKING](#)

Year Built: 2000

Model: Sport Fisherman

Price: PRICE ON APPLICATION

Location: United States

LOA: 65' 0" (19.81m)

Beam: 18' 8" (5.69m)

Min Draft: 6' 0" (1.83m)

Cruise Speed: 28 Kts. (32 MPH)

Our experienced yacht broker, Andrey Shestakov, will help you choose and buy a yacht that best suits your needs **Lady Z — VIKING** from our catalogue. Presently, at Shestakov Yacht Sales Inc., we have a wide variety of yachts available on our sale's list. We also work in close contact with all the big yacht manufacturers from all over the world.

If you would like to buy a yacht **Lady Z — VIKING** or would like help answering any questions concerning purchasing, selling or chartering a yacht, please call **+1(954)274-4435**

TABLE OF CONTENTS

TABLE OF CONTENTS	2
SPECIFICATIONS	4
Overview	4
Basic Information	4
Dimensions	4
Speed, Capacities and Weight	4
Accommodations	5
Hull and Deck Information	5
Engine Information	5
DETAILED INFORMATION	6
Overview	6
Salon	6
Dinette	6
Master Stateroom	6
Master Head	7
VIP Stateroom	7
VIP Head	7
Guest Head	7
Starboard Stateroom	8
Enclosed Flybridge	8
Flybridge Aft Deck	8
Electronics	9
Engine Room	9
Cockpit	10
Decks	10
Hull	10
Tower	11
Broker's Remarks	11

Exclusions	11
Disclaimer	12
PHOTOS	13
CONTACTS	20
Contact details	20
Telephones	20
Office hours	20
Address	20

SPECIFICATIONS

Overview

This is a one of a kind 65 Viking Enclosed Bridge. The current owner has continuously updated and maintained the boat to the highest standards. Updates include a Viking installed mezzanine and cockpit refrigeration in 2014, a complete paint job by Viking in 2012, complete teak deck and covering boards, Niad Stabilizers, 2 Nav Net TZ touch chart plotters, custom rod storage, new carpet and carpet runners in 2012, new custom cockpit shade covers and much more. Lady Z has the Master Suite layout with the aft parlor room. She is in excellent condition and shows like a much newer Viking. Lady Z has the comforts of a motor yacht with fish-ability you expect from Viking.

Basic Information

Category: Sport Fisherman

Sub Category: Convertible

Model Year: 2000

Year Built: 2000

Country: United States

Vessel Top: Hardtop W/Tower

Fly Bridge: Yes

Cockpit: Yes

Dimensions

LOA: 65' 0" (19.81m)

LOD: 69' 10" (21.29m)

Beam: 18' 8" (5.69m)

Min Draft: 6' 0" (1.83m)

MFG Length: 65' 10" (20.07m)

Speed, Capacities and Weight

Cruise Speed: 28 Kts. (32 MPH)

Cruise Speed RPM: 1950 Kts.

Displacement: 96000 Pounds

Gross Tonnage: 1 Pounds

Water Capacity: 360 Gallons

Fuel Capacity: 2000 Gallons

Accommodations

Total Cabins: 3

Total Berths: 4

Sleeps: 6

Total Heads: 3

Hull and Deck Information

Hull Material: Fiberglass

Engine Information

Engines: 2

Manufacturer: Caterpillar

Model: 3412

Engine Type: Inboard

Fuel Type: Diesel

DETAILED INFORMATION

Overview

Very Clean boat. Everything has been well maintained and all wood has retained its high gloss finish really well.

Salon

- L-Shaped sofa with under cushion storage
- Aft facing Love Seat
- High – low teak table with custom cover
- 32” Samsung Flat screen HDTV
- Spiral stairwell to enclosed fly bridge
- Denon Source Receiver
- Vizio DVD/Blue ray player
- Yamaha 5 Disc CD Changer
- Ships Electrical Breaker Panel
- Corner table between sofa and love seat with lamp
- Electric salon door
- Amtico flooring in the entrance way
- Teak Valances and Lambrequins
- Kenmore Elite Ice Maker under counter
- SMX II A/C Control
- Dimmable Lighting
- Covers for sofa cushions
- Carpet runner

Dinette

- Large Dinette
- U-Shaped Cushioned seating
- Teak Dinette Table w/ teak pedestal and custom cover
- Amtico flooring
- High gloss finish throughout salon and galley.
- Underseat storage with surround sound sub-woofer

Master Stateroom

- King sized Bed

- Sitting parlor aft with double door hanging locker
- Work station desk
- Large sofa
- 19" Flat screen TV w/ built in DVD Player in sitting parlor
- Custom Lockable Rod Storage locker aft of sitting parlor on bulkhead
- Night stands with multiple drawer storage
- Dresser with multiple drawer storage
- Vizio Blu-ray DVD Player
- Air Conditioning controls
- Lift top bed with storage

Master Head

- Amtico flooring
- Mirror finished Medicine Cabinet
- Corian countertops
- Full sink
- 110 Electrical outlets
- Undersink cabinet storage
- Full size walk-in shower with molded bench seat
- Mirror finished linen closet with multiple shelving

VIP Stateroom

- Queen size Bed
- Sanyo 19" Flat screen TV
- Vizio Blu-ray Player
- Access to bilge storage
- Double door cedar lined hanging locker
- Underbed storage

VIP Head

- Walk-in Shower.
- Corian countertops.
- Mirror finished double door medicine cabinet

Guest Head

- Amtico flooring

- Corian countertop
- Mirror finished Medicine cabinet
- Walk in shower
- Full sink

Starboard Stateroom

- Sanyo 19" Flat screen TV
- Double door cedar lined hanging locker
- (2) single Bunk style berths
- High gloss wood finish throughout

Enclosed Flybridge

- L-Shaped sofa with storage.
- Stidd Helm chair.
- Port and Starboard helm seating.
- Storage cabinets and drawers.
- Ceiling grab rails.
- Operational side windows.
- 24" LG Flat screen TV
- Sink
- Refrigerator.
- Sony Playstation.
- Sun Hatch with pull screen shade.
- Custom Window Covers.
- A/c Thermostat controls.
- Fusion MS-RA200 stereo.
- Emergency Engine Shutoff. Fuel gauges and fuel transfer switch.
- ACR Spotlight controls.
- Storage under port and starboard seating w/ footrests
- Glendinning Controls
- Under dash cabinets
- Aerose Remote Control

Flybridge Aft Deck

- Ladder to fly bridge with deck hatch
- Bench seat with backrest and under seat storage
- Aft Control station with ICOM VHF
- Seven rod holders on aft railing

- Stabilizer Controls
- Furuno Nav Net display
- Bow thruster controls

Electronics

- (2) 17" Samsung Engine Master displays
- Furuno radar
- (2) Garmin GPS Map 740
- SEA 156 VHF
- (2) Furuno RD-30
- Robertson Autopilot
- SEA 2250 single side band radio
- Furuno Color Sounder FCV-292
- Furuno Nav Net Blackbox
- KBH Tracfone
- Caterpillar engine display

Engine Room

- Twin Caterpillar 3412 1400HP turbo diesel engines
- Painted headliner with overhead grab rails
- Aqua Whisper Water maker
- Oil change/Transfer system
- Port side Ship service batteries. 24v and 12v
- Dive Compressor
- Port side: port and starboard Engine/Genset 24v batteries
- Twin dual Racor engine fuel filters
- Port generator 21.5 kw Onan
- Starboard generator 27.5 kw Onan
- Eskimo Icemaker
- Halon Fire system
- Crusair A/C
- Aft Bilge Pump
- Dripless shaft box
- Engine Controls
- Tool box
- Ventilation fans
- Thermostat for Mezzanine Refrigerator
- GenSet gauges in entrance way
- Starboard Aft Ship service Battery control panel
- Forward Engine and Gen Battery control panel

- Pump room starboard forward
- Full Engine Gauges

Cockpit

- Teak Deck and teak covering boards
- Teak ladder treads
- Mezzanine seating with cushions
- Custom covers. Transom and fly cover with side panels
- Shore power Starboard and port with cable master
- Engine room access
- Transom Live well
- Tackle center starboard w/ 4 drawers
- Two Rod holders on each haunch. w/ grab rails
- Transom door w/ lift gate
- Deck box with Eskimo ice
- Large fish box
- Lazarette hatch
- In deck live well
- Four rod holders. (Two each side)
- Port side freshwater and saltwater washdown
- Freezer under Mezzanine seating
- Refrigerator drink box under salon door step
- Refrigerated drink box Mezzanine starboard
- Bluewater Fighting Chair. Offset pedestal, with rocket launcher tray and drawer

Decks

- Starboard Water fill
- Rupp Outriggers
- Starboard Waste
- Davit and removable dinghy chocks
- Port side forward and aft Diesel fills
- Lewmar Windlass w/ foot controls
- Gypsy chain and anchor
- Anchor locker w/ freshwater washdown
- Bow rail and pulpit
- Starboard forward and aft diesel fills

Hull

- Fender tracks under rub rail
- Ice Blue Hull
- Blue boot stripes

Tower

- Nine gap tower
- Buggy top w/ underside painted to match hull
- Tower center rigger
- (4) lights (three aft facing, One forward facing)
- Edson helm wheel
- Bow thruster control
- Caterpillar Engine RPM monitors
- Three flag stansions mounted under platform
- KBH Tracvision
- Ritchie Compass
- Furuno Nav Net TZ Touch
- Glendinning engine controls
- Forward ACR Spotlight
- COMROD Antennas (4)
- Polished Ship Horns
- Under Dash Sliding cabinet door access

Broker's Remarks

Niad Stabilizers

New fuel lines 2014

Mezzanine by Viking 2014

Paint, Full Boat by Viking 2012

New Carpet 2012

New Carpet runners 2012

(2) New Furuno Nav Net TZ Touch. One in Tower and One on Flybridge - 2014

Exclusions

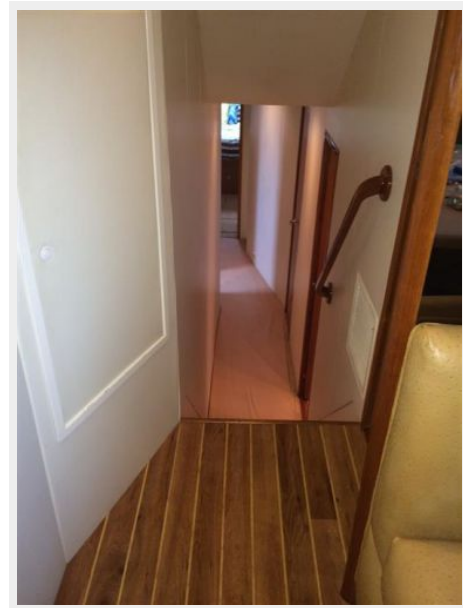
Owner's personal belongings.

Disclaimer

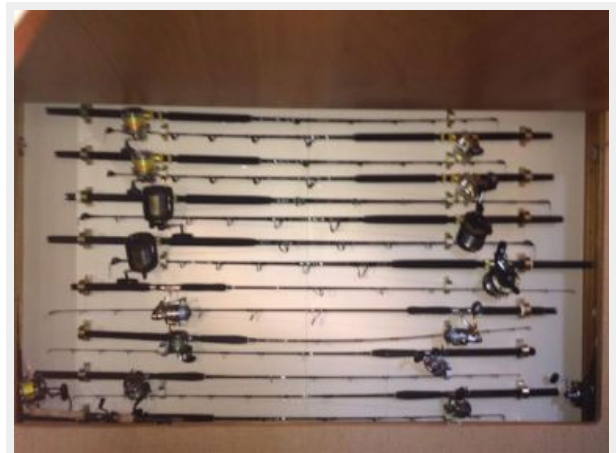
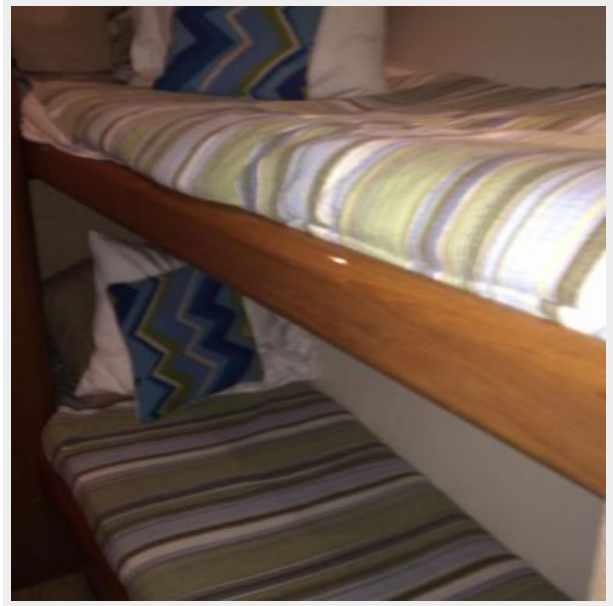
The Company offers the details of this vessel or yacht in good faith but cannot guarantee or warrant the accuracy of this information nor warrant the condition of the vessel. A buyer should instruct his representatives, agents, or his surveyors, to investigate such details as the buyer desires validated. This vessel or yacht is offered subject to prior sale, price change, or withdrawal without notice.

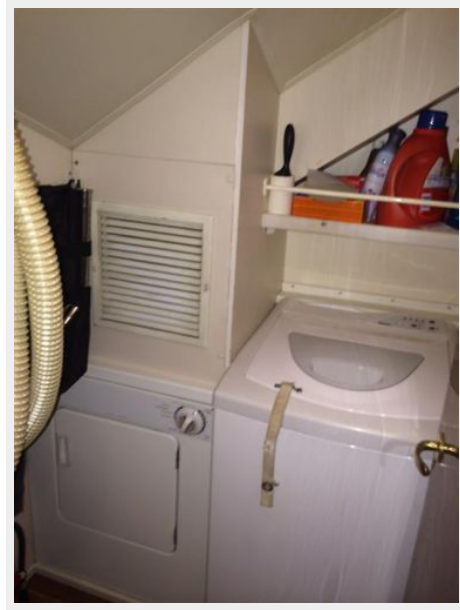
PHOTOS















CONTACTS

Andrey Shestakov, leading yacht broker of the sales department of Shestakov Yacht Sales Inc. Shestakov Yacht Sales Inc., the official representative of the Miami/Fort Lauderdale FL headquarters.

Contact details

Email: andrey@shestakovyachtsales.com

Web: shestakovyachtsales.com/en/

Telephones

USA: +1(954)274-4435

Office hours

Monday – Saturday: **9:00 - 21:00** EDT

Sunday: **closed**

Address



Harbour Towne Marina, 850 NE 3rd St,
STE 213, Dania, FL 33004