

## 42FT 1990 SEA RAY 420 STX — SEA RAY



**Builder:** [SEA RAY](#)

**Year Built:** 1990

**Model:** Cruiser

**Price:** PRICE ON APPLICATION

**Location:** United States Virgin Islands

**LOA:** 42' 0" (12.80m)

**Beam:** 13' 11" (4.24m)

**Max Draft:** 3' 6" (1.07m)

Our experienced yacht broker, Andrey Shestakov, will help you choose and buy a yacht that best suits your needs 42ft 1990 Sea Ray 420 STX — SEA RAY from our catalogue. Presently, at Shestakov Yacht Sales Inc., we have a wide variety of yachts available on our sale's list. We also work in close contact with all the big yacht manufacturers from all over the world.

If you would like to buy a yacht 42ft 1990 Sea Ray 420 STX — SEA RAY or would like help answering any questions concerning purchasing, selling or chartering a yacht, please call **+1(954)274-4435**

---

# TABLE OF CONTENTS

---

TABLE OF CONTENTS	2
SPECIFICATIONS	3
Basic Information	3
Dimensions	3
Speed, Capacities and Weight	3
Accommodations	3
Hull and Deck Information	3
Engine Information	4
DETAILED INFORMATION	5
Key Features	5
Specifications	5
Exclusions	6
Disclaimer	6
PHOTOS	7
CONTACTS	11
Contact details	11
Telephones	11
Office hours	11
Address	11

---

# SPECIFICATIONS

---

## Basic Information

---

**Category:** Cruiser

**Sub Category:** Express

**Model Year:** 1990

**Year Built:** 1990

**Country:** United States Virgin Islands

## Dimensions

---

**LOA:** 42' 0" (12.80m)

**Beam:** 13' 11" (4.24m)

**Max Draft:** 3' 6" (1.07m)

## Speed, Capacities and Weight

---

**Displacement:** 20000 Pounds

## Accommodations

---

**Total Cabins:** 2

**Total Berths:** 2

**Total Heads:** 1

## Hull and Deck Information

---

**Hull Material:** Fiberglass

---

## Engine Information

---

**Engines:** 2

**Manufacturer:** Caterpillar

**Model:** 3208

**Engine Type:** Inboard

**Fuel Type:** Diesel

---

## DETAILED INFORMATION

---

### Key Features

---

3208 Caterpillar (turbo), 375 hp Hours on engines :

Port = 1866 Starboard = 1861

Northern Lights Generator

Ray Marine C-80, chart plotter, GPS, radar, depth, auto pilot with color monitor

Spare Props

### Specifications

---

Model/year : SeaRay Sundancer 420 /1990

Power : Twin diesel, 3208 Caterpillar (turbo), 375 hp Hours on engines : Port = 1866  
Starboard = 1861

Generator : Northern Lights (diesel) 8 kw w/ sound box

Length : 47' 6"

Beam : 13' 11"

Miss Behavin has undergone extensive repairs and upgrades since I bought her (Sept 2001). She was beautiful and well maintained when I bought her, and she is still a beautiful and well maintained boat with many upgrades and improvements.

Many of them are described below :

DASHBOARD : The entire dash has been replaced, including the back plate (custom built by Technografic, Ft. Lauderdale, FL, June 2003).

All switched, breakers, dials and gauges have been replaced with new units.

The chart plotter was replaced with a Ray Marine C-80, which contains a chart plotter, GPS, radar, depth gauge, with color monitor. The C-80 is integrated with the auto pilot (original equipment). \*\* Ray Marine bought the company which manufactures the auto pilot, and the connection is a simple RS232 plug-in.

INTERIOR UPHOLSTERY :

A previous owner replaced and customized the interior (their captain's wife owned an

upholstery shop and the owner gave her complete liberty to 're-do' the interior). Calypso Canvas fabricate fitted, custom covers for the forward berth and hatches. Wilson Canvas replaced the top with new canvas, including raising the front portion (forward of the spoiler) and installing zippered, roll-up panels. They also replaced the rear, fixed support tubes with canvas, tie down straps, so that portion of the top canvas could be folded forward and tied to the spoiler. They also fabricated a customized, removable, canvas floor cover to protect the carpet.

#### GALLEY :

Microwave/convection oven.

Updated refrigerator/freezer.

#### ENGINE ROOM :

Battery Charger :

ProMarine –ProSport 20, a dual bank battery charge, plus 2 battery switches

Stuffing Boxes : The original equipment (dripless couplers) were replaced with standard stuffing boxes, which are much easier to service (parts are much easier to find, in the Caribbean).

In essence, Miss Behavin is a well maintained boat which you can start and drive away from the dock.

She is not a 'fixer-upper', which will require a lot of investment to make sea worthy.

Includes many extras, including extra pair of bronze propellers, belts, clamps, pumps, impellers, tools, hoses, 30 amp traveling electrical lines, and others.

---

## Exclusions

Owner's personal belongings.

---

## Disclaimer

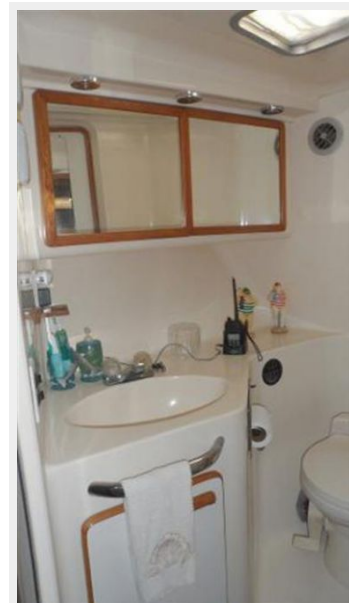
The Company offers the details of this vessel or yacht in good faith but cannot guarantee or warrant the accuracy of this information nor warrant the condition of the vessel. A buyer should instruct his representatives, agents, or his surveyors, to investigate such details as the buyer desires validated. This vessel or yacht is offered subject to prior sale, price change, or withdrawal without notice.

# PHOTOS











# CONTACTS

---

Andrey Shestakov, leading yacht broker of the sales department of Shestakov Yacht Sales Inc. Shestakov Yacht Sales Inc., the official representative of the Miami/Fort Lauderdale FL headquarters.

## Contact details

---

Email: [andrey@shestakovyachtsales.com](mailto:andrey@shestakovyachtsales.com)

Web: [shestakovyachtsales.com/en/](http://shestakovyachtsales.com/en/)

## Telephones

---

USA: +1(954)274-4435

## Office hours

---

Monday – Saturday: **9:00 - 21:00** EDT

Sunday: **closed**

## Address

---



Harbour Towne Marina, 850 NE 3rd St,  
STE 213, Dania, FL 33004