

BLUE MOON — BENETEAU



Builder: BENETEAU

Year Built: 2003

Model: Cruising Sailboat

Price: PRICE ON APPLICATION

Location: United States

LOA: 41' 0" (12.50m)

Beam: 13' 0" (3.96m)

Max Draft: 4' 9" (1.45m)

Our experienced yacht broker, Andrey Shestakov, will help you choose and buy a yacht that best suits your needs **Blue Moon — BENETEAU** from our catalogue. Presently, at Shestakov Yacht Sales Inc., we have a wide variety of yachts available on our sale's list. We also work in close contact with all the big yacht manufacturers from all over the world.

If you would like to buy a yacht **Blue Moon — BENETEAU** or would like help answering any questions concerning purchasing, selling or chartering a yacht, please call **+1(954)274-4435**

TABLE OF CONTENTS

| | |
|---|----|
| TABLE OF CONTENTS | 2 |
| SPECIFICATIONS | 4 |
| Basic Information | 4 |
| Dimensions | 4 |
| Speed, Capacities and Weight | 4 |
| Accommodations | 4 |
| Hull and Deck Information | 4 |
| Engine Information | 5 |
| DETAILED INFORMATION | 6 |
| Sail Area | 6 |
| Keel Details | 6 |
| Manufacturer Provided Description | 6 |
| Custom for this Great Limited Edition 411 | 6 |
| Exclusions | 6 |
| Disclaimer | 7 |
| PHOTOS | 8 |
| Helm looking aft | 8 |
| Sailing | 8 |
| Smooth Sailing | 8 |
| Starboard Lazarette Storage | 8 |
| Forward berth looking aft | 9 |
| Forward Head | 9 |
| Forward berth looking forward | 9 |
| Bench and storage forward berth | 9 |
| Forward berth looking port and aft - Large Hanging locker | 10 |
| Bench and storage forward berth | 10 |
| Forward berth hanging locker | 10 |
| Galley to port | 10 |

| | |
|---|-----------|
| U shaped salon convertible seat and berth | 10 |
| Galley 2 | 10 |
| Galley SS double sink | 11 |
| Galley looking aft | 11 |
| Salon seating | 11 |
| Electric panel at Nav. station to starboard | 11 |
| Aft Cabin one of two | 11 |
| Aft cabin two of two | 11 |
| Head 2 midship to port | 12 |
| Head 2 mid ship to port 2 | 12 |
| Yanmar 56 HP. | 12 |
| Center line seat with storage / Salon | 12 |
| Electric windlass | 12 |
| From bow looking stern 5 hatches | 13 |
| Anchor | 13 |
| View from Walk-thru Transom | 13 |
| Looking forward from midship | 13 |
| Ridgid Boom Vang | 13 |
| Lazarette storage | 13 |
| Propane tank storage | 14 |
| Stern Seat port side | 14 |
| Stern Seat starboard side | 14 |
| Layout options | 14 |
| CONTACTS | 15 |
| Contact details | 15 |
| Telephones | 15 |
| Office hours | 15 |
| Address | 15 |

SPECIFICATIONS

Basic Information

Category: Cruising Sailboat

Model Year: 2003

Year Built: 2003

Country: United States

Dimensions

LOA: 41' 0" (12.50m)

LWL: 36' 1" (11.00m)

Beam: 13' 0" (3.96m)

Max Draft: 4' 9" (1.45m)

MFG Length: 41' 8" (12.70m)

Speed, Capacities and Weight

Displacement: 17196 Pounds

Water Capacity: 144 Gallons

Holding Tank: 20 Gallons

Fuel Capacity: 39 Gallons

Accommodations

Total Cabins: 3

Total Berths: 6

Total Heads: 2

Hull and Deck Information

Hull Material: Fiberglass

Engine Information

Engines: 1

Manufacturer: Yanmar

Model: 4JH3E

Engine Type: Inboard

Fuel Type: Diesel

DETAILED INFORMATION

Sail Area

IJPE : 698.00 sq ft I : 47.75 ft J : 16.33 ft P : 41.50 ft E : 14.08 ft Working Sail Area : 698.00 sq ft

Keel Details

Keel Type: Wing Ballast: 5236 lb

Max Draft: 4.75 ft

Manufacturer Provided Description

This Beneteau 411S Limited Edition, designed by the renowned Groupe Finot, exemplifies a true marriage of performance and beauty. With the bulb keel maximum stability and efficiency on all points of sail are achieved by her low center of gravity. The standard in-mast furling main and roller furling genoa provide efficiency and true ease of handling. The large cockpit with teak inlay seats is designed for maximum comfort and the pedestal console allows ample space for installed electronics. There is also a dual-leaf cockpit table containing a large molded storage area and plenty of space to stow gear in the large cockpit lockers. The extra-wide aft swim platform and ladder, walk-through transom, and standard cockpit shower makes swimming easy and convenient. The desirable three-cabin layout has roomy companionways, large cabins, and plenty of storage throughout, all accented with richly detailed cabinetry. Specially designed for serious cruising, the 411 navigation station has a large chart table with additional locker storage underneath, as well as ample space for installed electronics. The deluxe forward owner's stateroom features a generous double berth and an upholstered port settee that is perfect for reading or relaxing. There is also private access to the spacious forward head with sink and shower unit. The galley is beautifully appointed with pressure laminate counter tops, double stainless sinks, and loads of storage. The two-compartment refrigerator / freezer has top and side access, and the two-burner propane stove with oven will accommodate every culinary need.

Custom for this Great Limited Edition 411

- Custom Steel Cradle
- Custom Winter Canvas Storage Cover
- Awlgrip hull sides

Exclusions

Owner's personal belongings.

Disclaimer

The Company offers the details of this vessel or yacht in good faith but cannot guarantee or warrant the accuracy of this information nor warrant the condition of the vessel. A buyer should instruct his representatives, agents, or his surveyors, to investigate such details as the buyer desires validated. This vessel or yacht is offered subject to prior sale, price change, or withdrawal without notice.

PHOTOS

Helm looking aft



Sailing



Smooth Sailing



Starboard Lazarette Storage



Forward Head



Forward berth looking aft



Forward berth looking forward



Bench and storage forward berth



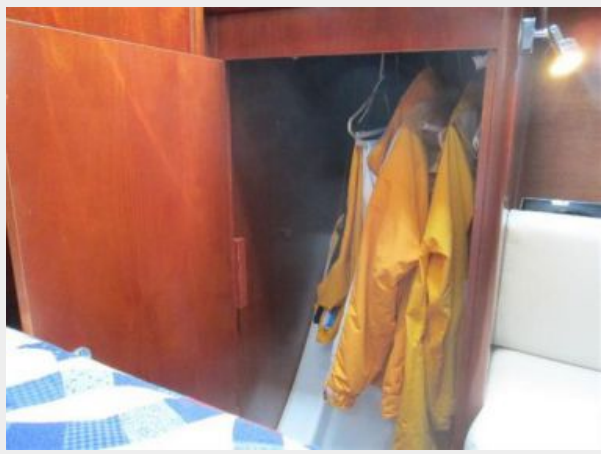
Bench and storage forward berth



Forward berth looking port and aft - Large Hanging locker



Forward berth hanging locker



Galley to port



U shaped salon convertible seat and berth



Galley 2



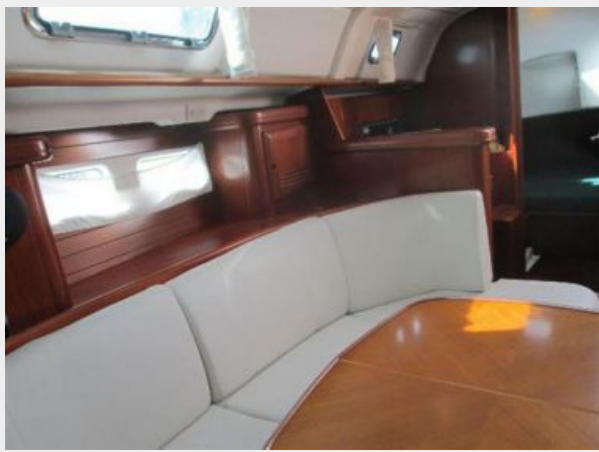
Galley SS double sink



Galley looking aft



Salon seating



Electric panel at Nav. station to starboard



Aft Cabin one of two



Aft cabin two of two



Head 2 midship to port

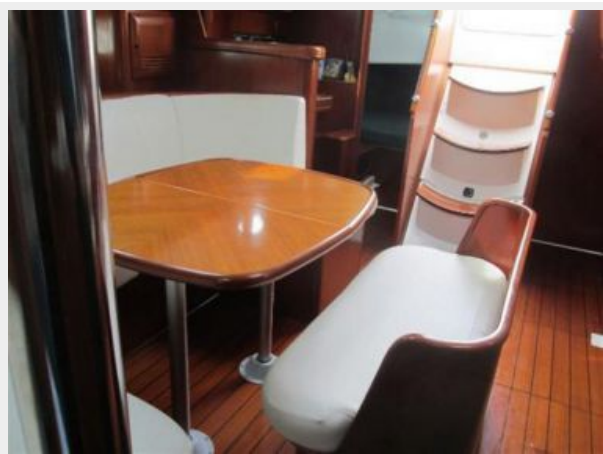


Head 2 mid ship to port 2



Yanmar 56 HP.

Center line seat with storage / Salon



Electric windlass



From bow looking stern 5 hatches

Anchor



View from Walk-thru Transom



Looking forward from midship



Ridgid Boom Vang



Lazarette storage



Propane tank storage



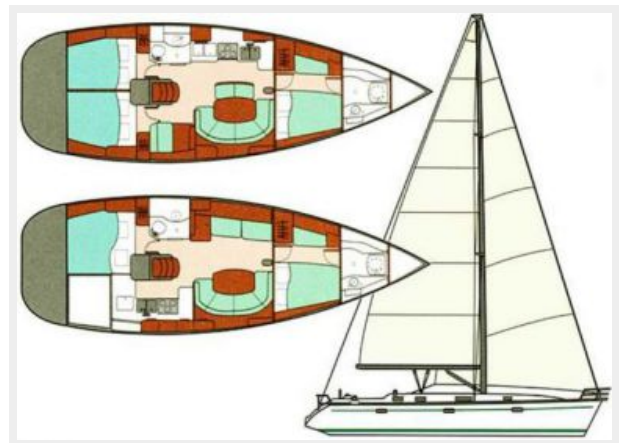
Stern Seat port side



Stern Seat starboard side



Layout options



CONTACTS

Andrey Shestakov, leading yacht broker of the sales department of Shestakov Yacht Sales Inc. Shestakov Yacht Sales Inc., the official representative of the Miami/Fort Lauderdale FL headquarters.

Contact details

Email: andrey@shestakovyachtsales.com

Web: shestakovyachtsales.com/en/

Telephones

USA: +1(954)274-4435

Office hours

Monday – Saturday: **9:00 - 21:00** EDT

Sunday: **closed**

Address



Harbour Towne Marina, 850 NE 3rd St,
STE 213, Dania, FL 33004