

LADY RIMA — SUNSEEKER



Builder: SUNSEEKER

Year Built: 2009

Model: Motor Yacht

Price: PRICE ON APPLICATION

Location: Lebanon

LOA: 120' 11" (36.86m)

Beam: 26' 3" (8.00m)

Min Draft: 7' 5" (2.26m)

Max Draft: 7' 5" (2.26m)

Cruise Speed: 12 Kts. (14 MPH)

Max Speed: 23 Kts. (26 MPH)

Our experienced yacht broker, Andrey Shestakov, will help you choose and buy a yacht that best suits your needs **LADY RIMA — SUNSEEKER** from our catalogue. Presently, at Shestakov Yacht Sales Inc., we have a wide variety of yachts available on our sale's list. We also work in close contact with all the big yacht manufacturers from all over the world.

If you would like to buy a yacht **LADY RIMA — SUNSEEKER** or would like help answering any questions concerning purchasing, selling or chartering a yacht, please call **+1(954)274-4435**

TABLE OF CONTENTS

TABLE OF CONTENTS	2
SPECIFICATIONS	4
Overview	4
Basic Information	4
Dimensions	4
Speed, Capacities and Weight	4
Accommodations	4
Hull and Deck Information	5
Engine Information	5
PHOTOS	6
Profile	6
Layout	6
Profile	6
Profile	6
Profile	6
Profile	6
Aft Profile	7
Aft Profile	7
Aft Cockpit	7
Aft Cockpit	7
Aft Cockpit	7
Flybridge Seating Area	7
Flybridge Saloon	8
Wetbar	8
Saloon	8
Saloon	8
Saloon	8
Dining Area	8

Dining Area	9
Saloon	9
Saloon	9
Galley	9
Helm	9
Master Cabin	9
Master Cabin	10
Stairs To Lower Deck	10
VIP Guest Cabin	10
VIP Guest Cabin	10
Twin Guest Cabin	10
Twin Guest Cabin	10
Ensuite	11
Ensuite	11
Ensuite	11
Crew Galley	11
Captains Cabin	11
CONTACTS	12
Contact details	12
Telephones	12
Office hours	12
Address	12

SPECIFICATIONS

Overview

The Sunseeker 37 Metre Yacht is the first Tri-Deck vessel built by Sunseeker International. "LADY RIMA" boasts 3 internal decks, not including the sky deck above, this vessel presents both the volume of a much larger boat and also the luxury that is promised by the brand name. This vessel has a fantastic reputation and is on the market at a very good price. With an extensive list of additional extras, viewing is highly recommended, please contact us for further information.

Basic Information

Category: Motor Yacht

Model Year: 2009

Year Built: 2009

Country: Lebanon

Fly Bridge: Yes

Cockpit: Yes

Dimensions

LOA: 120' 11" (36.86m)

Beam: 26' 3" (8.00m)

Min Draft: 7' 5" (2.26m)

Max Draft: 7' 5" (2.26m)

Speed, Capacities and Weight

Cruise Speed: 12 Kts. (14 MPH)

Max Speed: 23 Kts. (26 MPH)

Displacement: 387793.118858 Pounds

Water Capacity: 1307.6516574 Gallons

Fuel Capacity: 6097.09096016 Gallons

Accommodations

Total Cabins: 5

Total Berths: 10

Sleeps: 1

Crew Berths: 8

Hull and Deck Information

Hull Material: GRP

Engine Information

Engines: 2

Manufacturer: MTU

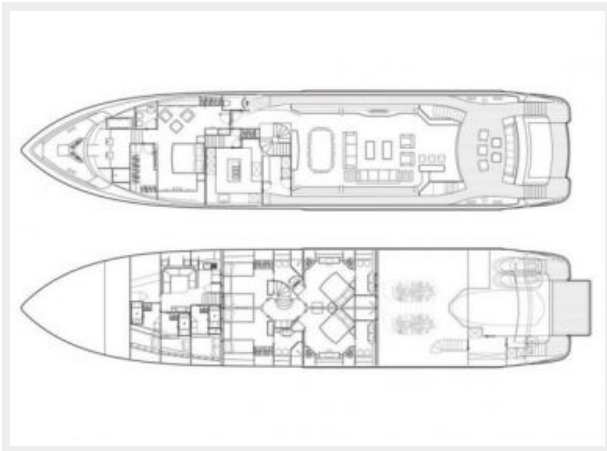
Model: 12V 4000 M90

Engine Type: Inboard

Fuel Type: Diesel

PHOTOS

Layout



Profile



Profile



Profile



Profile



Profile



Aft Profile



Aft Profile



Aft Cockpit



Aft Cockpit



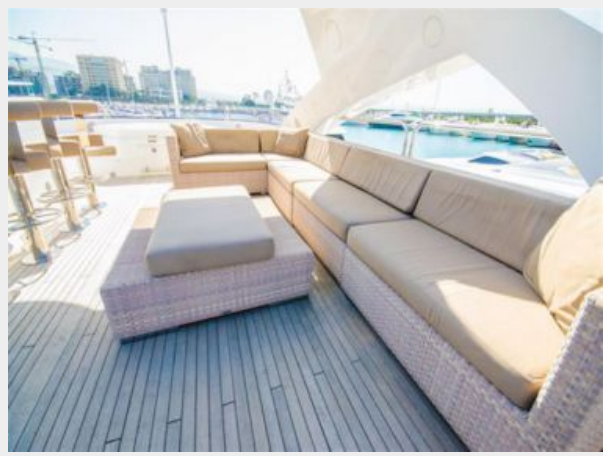
Aft Cockpit



Flybridge Seating Area



Flybridge Saloon



Wetbar



Saloon



Saloon



Saloon



Dining Area



Dining Area



Saloon



Saloon



Galley



Helm



Master Cabin



Master Cabin



Stairs To Lower Deck



VIP Guest Cabin



VIP Guest Cabin



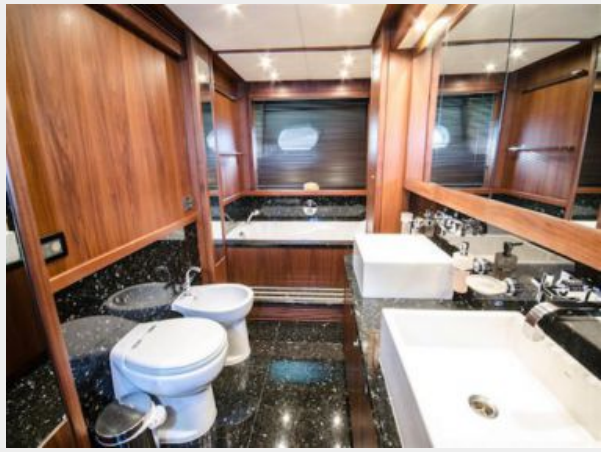
Twin Guest Cabin



Twin Guest Cabin



Ensuite



Ensuite



Ensuite



Crew Galley



Captains Cabin



CONTACTS

Andrey Shestakov, leading yacht broker of the sales department of Shestakov Yacht Sales Inc. Shestakov Yacht Sales Inc., the official representative of the Miami/Fort Lauderdale FL headquarters.

Contact details

Email: andrey@shestakovyachtsales.com

Web: shestakovyachtsales.com/en/

Telephones

USA: +1(954)274-4435

Office hours

Monday – Saturday: **9:00 - 21:00** EDT

Sunday: **closed**

Address



Harbour Towne Marina, 850 NE 3rd St,
STE 213, Dania, FL 33004