

CZECHMATE — CRUISERS YACHTS



Builder: [Cruisers Yachts](#)

Year Built: 2004

Model: Cruiser

Price: PRICE ON APPLICATION

Location: United States

LOA: 58' 0" (17.68m)

Beam: 16' 0" (4.88m)

Max Draft: 3' 10" (1.17m)

Cruise Speed: 30 Kts. (35 MPH)

Max Speed: 36 Kts. (41 MPH)

Our experienced yacht broker, Andrey Shestakov, will help you choose and buy a yacht that best suits your needs **Czechmate — Cruisers Yachts** from our catalogue. Presently, at Shestakov Yacht Sales Inc., we have a wide variety of yachts available on our sale's list. We also work in close contact with all the big yacht manufacturers from all over the world.

If you would like to buy a yacht **Czechmate — Cruisers Yachts** or would like help answering any questions concerning purchasing, selling or chartering a yacht, please call **+1(954)274-4435**

TABLE OF CONTENTS

TABLE OF CONTENTS	2
SPECIFICATIONS	3
Overview	3
Basic Information	3
Dimensions	3
Speed, Capacities and Weight	4
Accommodations	4
Hull and Deck Information	4
Engine Information	4
DETAILED INFORMATION	5
Broker Comments & Upgrades	5
Test Results	5
Hull & Deck Features	5
Cabin Features	6
Technical Features	8
Exclusions	10
Disclaimer	11
PHOTOS	12
CONTACTS	26
Contact details	26
Telephones	26
Office hours	26
Address	26

SPECIFICATIONS

Overview

The Cruisers 540 Express was one of the largest domestic express yachts available when she was introduced in 2004 and rebadged the 580 Express in 2007, the Cruisers 540 Express is an impressive blend of American sporty styling, luxurious accommodations, and state-of-the-art construction. The wide beam and an expansive two-stateroom, two-head floor plan provide the 540 with cabin dimensions that European imports with their relatively narrow beams could only envy. Cruisers Yachts interiors have always been among the best in the business, and the accommodations of the 540 Express are impressive in every respect. The mid-stateroom Master, complete with an enclosed head and washer/dryer, walk-in closet offers complete privacy behind solid cherry door. The VIP accommodations forward are sure to impress the most discerning guest with an ensuite head with separate shower. In the cockpit, the aft U-shape settee converts electrically into a huge sun pad. A gas-assist hatch provides easy access to the engine room. An extended swim platform holds a hard-bottom inflatable and the concealed davit makes launch and retrieval a snap. Twin 715hp V-drive Volvo Penta diesels cruise the 540 Express in the 26-28 knots (30–32 knots top). This boat recently went thru a stem to stern service & detail from A/C systems, full 500 hour engine service 6/14, cooling system flush, new hoses & clamps, impellers, racors, fuel filters, new bronze elbows, new eisenglass enclosure, new soundshield for Generator, new batteries, this list is long and distinguished. Don't be fooled -- this yacht was in great shape. The owner just has taken the deferred maintenance off the table for the next owner.

Basic Information

Category: Cruiser

Sub Category: Express

Model Year: 2004

Year Built: 2004

Country: United States

Dimensions

LOA: 58' 0" (17.68m)

Beam: 16' 0" (4.88m)

Max Draft: 3' 10" (1.17m)

Clearance: 13' 10" (4.22m)

Speed, Capacities and Weight

Cruise Speed: 30 Kts. (35 MPH)

Max Speed: 36 Kts. (41 MPH)

Water Capacity: 150 Gallons

Holding Tank: 100 Gallons

Fuel Capacity: 325 Gallons

Accommodations

Total Cabins: 2

Total Berths: 3

Total Heads: 2

Hull and Deck Information

Hull Material: Fiberglass

Engine Information

Engines: 2

Manufacturer: Volvo Penta

Model: D12

Engine Type: Inboard

Fuel Type: Diesel

DETAILED INFORMATION

Broker Comments & Upgrades

- Air Conditioning/Heating - Cockpit (16,000 BTU)
- Bow Thruster
- Bottom Painted **5/2015**
- New Elbows **05/2014**
- New Upholstery **06/2014**
- Canvas, Blue with Slant Aft Curtain
- New enclosure - **06/2014**
- Canvas, Dash Cover
- 13.5kW Onan Generator w/ NEW Sound Shield **07/2014**
- Propellers, Spare (Pair)
- Refrigerator, Cockpit - Dual-Voltage (120V/12V)
- Stereo, New Head Unit & Subwoofer **05/2015**
- Transformer, Shore Power Isolation Boost - 50 Amp/240V/60 Cycle
- Vacuum System, Central - 120V/60 Cycle (Beam®)
- Washer/Dryer Combo, Splendid 2000S 120V
- Full Annual Services Mains & Generator - **Completed 6/2014**

Test Results

RPM GPH MPH

1000 11.4 10.7

1600 35.8 21

1800 42.6 29.4

2000 47.6 31.5

2070 48.0 33.0

2100 56.0 34.7

2200 66.4 36.7

2280 73.4 37.9

Hull & Deck Features

- Bottom Paint New 5/2015
- Bow Pulpit, Integral
- Bow Rail, 316 Stainless Steel w/Welded Stanchions

- Cleats, Thru-Bolted - Stainless Steel (8)
- Color Schemes (Blue, White)
- Deck Fill Plates, Stainless Steel
- Deck Rails, 316 Stainless Steel
- Gel-Coat, Arctic White & Blue
- Handrails, 316 Stainless Steel
- Hatches, Deck Vent - Translucent w/Locks & Sky Screen Covers (2 - 20x20)
- Light, Stern
- Lights, Navigation - Stainless Steel
- Portlights, Stainless Steel (4 Fixed, 7 Opening)
- Resin, High-Performance Vinylester
- Rub Rail, PVC w/Stainless Steel Insert
- Storage, Transom Wall - Fenders & Gear
- Storage, Davit Concealed
- Stringer System, Fiberglass
- Swim Platform, Extended w/Concealed Stainless Steel Three-Step Swim Ladder w/Integral Grab Handle
- Thru-Hull Fittings, Color-Coordinated
- Vent System, Engine Room - Integral
- Windshield, Tempered/Tinted Curved Glass w/Stainless Steel Frame,
- Windshield Washer System w/Stainless Steel Nozzles
- Windshield Wipers
- Canvas (Sunbrella®):
 - Hardtop Enclosure UPGRADED **(06/2104)**
 - Slant Curtain
 - Dash Cover
- Windlass System:
 - Anchor, Galvanized
 - Anchor Chute, Stainless Steel
 - Anchor Rope/Chain Storage w/Hatch
 - Anchor Washdown Spigot w/Hose
 - Windlass, Rope/Chain w/Foot Switches
- Certifications:
 - Meets Applicable USCG & ABYC Standards
 - NMMA Certification Cockpit Features

Cabin Features

- Carbon Monoxide Monitors
- Carpet, Deep-Pile BCF - 44-Ounce
- Handrails, Elliptical Stainless Steel
- Interior Finish - Cherry Panel
- Lighting, 12V Halogen

- Lighting, 12V Indirect
- Lighting, 120V Halogen
- Outlet, 12V Accessory
- Outlets, 120V GFI Protected
- Outlets, Phone
- Pillows, Accent
- Black Outlet & Switch Plates
- Shades, Fabric Day/Night w/Drape Trim
- Storage, In-Floor
- Wood Trim, Handcrafted

Salon:

- Surround w/ DVD & Acoust
- Mirror, Wall Accent
- Seating, Inclining Chair (Ultraleather HPTM)
- Seating, Sofa w/Electrically Operated Slide-Out Bed (Ultraleather HPTM)
- Storage, Gunwale Cabinets - Upper
- Table, Salon (Movable) Hi-Lo w/Stools
- Sony LCD HDTV/ 27" w/Remote, Coax Outlet & Gain Control Panel

Galley:

- Countertop, Solid Surface w/Granite-Colored, Sink, Single-Lever Faucet & Sink Cover
- Microwave/Convection Oven, 120V
- Power Vent, 12V
- Refrigerator/Freezer, Upright - Dual-Voltage - 120V/12V
- Storage, Bottle
- Storage, Drawers w/Cutlery Insert
- Storage, Lower Cabinet w/Slide-Out Tray
- Storage, Upper & Lower w/Designated Plate & Glass Storage
- Stove, 240V Three-Burner

Master Stateroom:

- Bed, Queen Size Island Berth Mid-ship w/Innerspring Mattress
- Door, Privacy - Cherry Panel
- Mirrored Head Board w/ Storage
- Storage, Side Shelves
- Dynex HDTV 20" Flat Panel - 120V
- Walk-in Hanging Locker w/Shelve, Lights

Master Head/Shower:

- Clothes Hook
- Door, Privacy

- Head (VacuFlush®)
- Power Vent, 12V
- Shower w/Seat, Adjustable Shower Wand & Stainless & Acrylic Door with latch
- Storage, Medicine Cabinet - Mirrored
- Vanity w/Corian® Countertop, Sink, Faucet & Storage Below

VIP-Stateroom:

- Door, Privacy - Cherry Panel
- Hanging Locker, Cedar-Lined
- Portlights, Stainless Steel (2 - Opening)
- Queen Pedestal Berth Forward
- Storage, Cabinets & Drawers
- LCD HDTV 20" - 120V w/Remote & Coax Outlet

VIP-Stateroom Head/Shower:

- Clothes Hook
- Shower w/Seat, Adjustable Shower Wand & Stainless & Acrylic Door with latch
- Door, Privacy - Access from Mid-Stateroom
- Head w/ (VacuFlush®)
- Power Vent, 12V
- Storage, Medicine Cabinet
- Vanity w/Corian® Countertop, Sink, Faucet w/Pullout Shower Sprayer & Storage Below

Technical Features

Control Station:

- Alarms, Engine - Oil, Water & Transmission Oil
- Alarms, High-Water - Bilge
- Bow Thruster
- Compass
- Cruisers Custom Control Station, Lights, Trim Tabs, Engine, Key Code, Wiper, & Windlass Control
- Emergency Start System - Engines
- Gel-Coated Dash - Tan
- Horn, Air (Concealed) - Dual Trumpet
- Panel, Instrument - High-Gloss Burl Panel
- Volvo Penta Digital Shift & Throttle
- Volvo Penta Digital Displays, Fuel Flow, RPM, Temperature, Oil Pressure, Water Pressure, Transmission
- Spotlight w/Dual Halogen Bulbs - Remote-Controlled (ACR®)
- Steering, Hydraulic w/ Power-Assisted pump

- Steering, Tilt Wheel & Wood-Accent

Electronics:

- Electronics Circuit w/Ground Plate, 50 Amp/12V
- Northstar 6000i GPS Chartplotter
- Furuno Monochrome Radar w/ Open Array Dome 64nm Range
- Robertson AP22 Autopilot
- VHF Radio (Standard Horizon) w/Remote Speaker & 8' Fiberglass Antenna

Electrical Systems:

- Batteries, Dekka Marine (**New 2013**)
- Battery Charger/Converter, 120V/50 Amp/12V
- Battery Charger Overcurrent Protection
- Isolators, Galvanic (2)
- Panel, Circuit Breaker - Remote
- Panel, DC Main Breaker
- Panel, Main Distribution - AC
- Panel, Main Distribution - DC
- Panel, Remote Generator
- Shore Power, Cablemaster (Glendinning) 50 Amp/240V/60 Cycle w/75' Cord & Wireless Remote
- Transformers, Shore Power Isolation - 50 Amp/120V/60 Cycle
- TV/Phone Inlet w/TV Antenna, TV Shore Cord &
- Phone Shore Cord
- Wiring, Color-Coded w/Chafe Protection

Generator:

- Remote Start w/Muffler, Freshwater Cooling, Fuel Filter, Seacock &
- Seawater Strainer 120V/60 Cycle
- 13.5kW Diesel

Air Conditioning/Heating:

- Zone-Controlled Reverse-Cycle System (36,000 BTU)
- Custom Vent System

Engine Room:

- Bilge Pumps, 12V Automatic (2)
- Bilge Pumps, 12V Automatic High-Water (1 Bilge, 1 Cabin)
- Blowers, 12V Bilge (2)
- Engine Drip Sumps
- Fire Suppression System - Automatic w/Manual Pull
- Freshwater Cooling

- Gel-Coated Engine Room, Oyster
- Insulation, Engine Room - 2" w/Vinyl Barrier
- Ladder, Stainless Steel - Removable
- Lighting, 12V
- Reverso Oil Changer System - Engines, Transmissions & Generator
- Synchronizer, Engines

Fuel System:

- Crossover Fuel System
- Fuel Filters, Racor® (Dual) for Engines (1) for Generator
- Fuel Lines, USCG - Type A-1
- Fuel Tanks, Aluminum w/Anti-Siphon Valves &
- Electric Sending Units (2)
- Tanks 325 gallons (2)

Water System:

- Freshwater Washdown Spigot
- Pressure Water System w/Dual 12V Pumps
- Shower, Cockpit - Hot & Cold
- Water Heater, 240V (20-Gallon)
- Water Inlet, Dockside
- Water Tank (150-Gallon)

Waste Systems:

- Central Drain System
- Head System (VacuFlush®)
- Holding Tank Level Indicators - MDP & Heads
- Holding Tank w/Dockside Pump-Out (100-Gallon)
- Sump Box w/Pumps - Automatic

Underwater Gear:

- Bonding System w/Zinc Hull Plate
- Propellers, Nibral 4-Blade Cup
- Rudders, Manganese-Bronze w/Stainless Steel Posts
- Seacocks on all Underwater Fittings
- Seawater Strainers
- Shaft Logs, Dripless w/Extra Seal Carrier Kit
- Struts, Manganese-Bronze
- Trim Tabs, Hydraulic

Exclusions

Owner's personal belongings.

Disclaimer

The Company offers the details of this vessel or yacht in good faith but cannot guarantee or warrant the accuracy of this information nor warrant the condition of the vessel. A buyer should instruct his representatives, agents, or his surveyors, to investigate such details as the buyer desires validated. This vessel or yacht is offered subject to prior sale, price change, or withdrawal without notice.

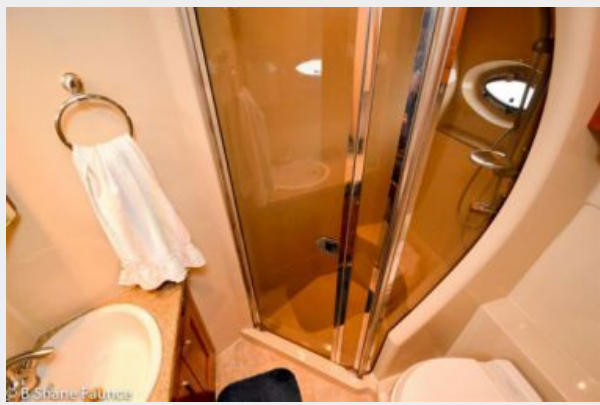
PHOTOS





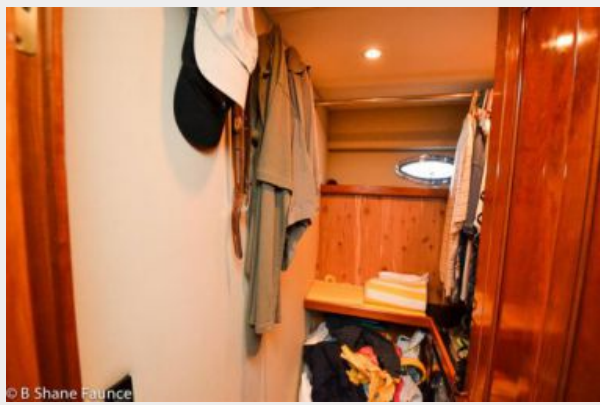


















© B. Shane Faunce



© B. Shane Faunce



© B. Shane Faunce



© B. Shane Faunce



© B. Shane Faunce



© B. Shane Faunce





© B. Shane Faunce



© B. Shane Faunce



© B. Shane Faunce



© B. Shane Faunce



© B. Shane Faunce



© B. Shane Faunce



© B Shane Faunce

CONTACTS

Andrey Shestakov, leading yacht broker of the sales department of Shestakov Yacht Sales Inc. Shestakov Yacht Sales Inc., the official representative of the Miami/Fort Lauderdale FL headquarters.

Contact details

Email: andrey@shestakovyachtsales.com

Web: shestakovyachtsales.com/en/

Telephones

USA: +1(954)274-4435

Office hours

Monday – Saturday: **9:00 - 21:00** EDT

Sunday: **closed**

Address



Harbour Towne Marina, 850 NE 3rd St,
STE 213, Dania, FL 33004