

## CZECHMATE — CRUISERS YACHTS



**Судостроитель:** [Cruisers Yachts](#)

**Год постройки:** 2004

**Модель:** Крейсер

**Цена:** ЦЕНА ЯХТЫ ПО ЗАПРОСУ

**Местонахождение:** United States

**Длина общая:** 58' 0" (17.68m)

**Ширина:** 16' 0" (4.88m)

**Макс. осадка:** 3' 10" (1.17m)

**Крейс. скорость:** 30 Kts. (35 MPH)

**Макс. скорость:** 36 Kts. (41 MPH)

Купить Czechmate — Cruisers Yachts а также выбрать подходящую вам яхту из нашего каталога яхт вам поможет опытный яхтенный брокер Андрей Шестаков. На сегодняшний день компания Shestakov Yacht Sales Inc. имеет большое количество яхт в собственном списке продаж, а также тесно сотрудничает со всеми крупными яхтенными производителями по всему миру.

Для того чтобы купить яхту Czechmate — Cruisers Yachts а также проконсультироваться по любому вопросу связанному с покупкой, продажей, чартером яхт позвоните по телефону **+7(918)465-66-44**.

# ОГЛАВЛЕНИЕ

---

ОГЛАВЛЕНИЕ	2
ХАРАКТЕРИСТИКИ	3
Обзор	3
Основная информация	3
Размеры	3
Скорость, вместимость и масса	4
Размещение	4
Корпус и палуба	4
Информация о двигателе	4
ПОДРОБНОЕ ОПИСАНИЕ	5
Broker Comments & Upgrades	5
Test Results	5
Hull & Deck Features	5
Cabin Features	6
Technical Features	8
Исключения	10
Отказ от ответственности	11
ФОТОГРАФИИ	12
КОНТАКТЫ	26
Контактная информация	26
Телефоны	26
Время работы	26
Адрес	26

# ХАРАКТЕРИСТИКИ

## Обзор

The Cruisers 540 Express was one of the largest domestic express yachts available when she was introduced in 2004 and rebadged the 580 Express in 2007, the Cruisers 540 Express is an impressive blend of American sporty styling, luxurious accommodations, and state-of-the-art construction. The wide beam and an expansive two-stateroom, two-head floor plan provide the 540 with cabin dimensions that European imports with their relatively narrow beams could only envy. Cruisers Yachts interiors have always been among the best in the business, and the accommodations of the 540 Express are impressive in every respect. The mid-stateroom Master, complete with an enclosed head and washer/dryer, walk-in closet offers complete privacy behind solid cherry door. The VIP accommodations forward are sure to impress the most discerning guest with an ensuite head with separate shower. In the cockpit, the aft U-shape settee converts electrically into a huge sun pad. A gas-assist hatch provides easy access to the engine room. An extended swim platform holds a hard-bottom inflatable and the concealed davit makes launch and retrieval a snap. Twin 715hp V-drive Volvo Penta diesels cruise the 540 Express in the 26-28 knots (30–32 knots top). This boat recently went thru a stem to stern service & detail from A/C systems, full 500 hour engine service 6/14, cooling system flush, new hoses & clamps, impellers, racors, fuel filters, new bronze elbows, new eisenglass enclosure, new soundshield for Generator, new batteries, this list is long and distinguished. Don't be fooled -- this yacht was in great shape. The owner just has taken the deferred maintenance off the table for the next owner.

## Основная информация

**Тип судна:** Крейсер

**Подкатегория:** Express

**Модельный год:** 2004

**Год постройки:** 2004

**Страна:** United States

## Размеры

**Длина общая:** 58' 0" (17.68m)

**Ширина:** 16' 0" (4.88m)

**Макс. осадка:** 3' 10" (1.17m)

**Трапы:** 13' 10" (4.22m)

## Скорость, вместимость и масса

---

**Крейс. скорость:** 30 Kts. (35 MPH)

**Макс. скорость:** 36 Kts. (41 MPH)

**Вместимость воды:** 150 Gallons

**Вместимость сточного бака:** 100 Gallons

**Объем топливного бака:** 325 Gallons

## Размещение

---

**Всего кают:** 2

**Всего коек:** 3

**Всего ком. состава:** 2

## Корпус и палуба

---

**Материал корпуса:** Fiberglass

## Информация о двигателе

---

**Двигатели:** 2

**Производитель:** Volvo Penta

**Модель:** D12

**Тип двигателя:** Inboard

**Тип топлива:** Diesel

---

# ПОДРОБНОЕ ОПИСАНИЕ

---

## Broker Comments & Upgrades

---

- Air Conditioning/Heating - Cockpit (16,000 BTU)
- Bow Thruster
- Bottom Painted **5/2015**
- New Elbows **05/2014**
- New Upholstery **06/2014**
- Canvas, Blue with Slant Aft Curtain
- New enclosure - **06/2014**
- Canvas, Dash Cover
- 13.5kW Onan Generator w/ NEW Sound Shield **07/2014**
- Propellers, Spare (Pair)
- Refrigerator, Cockpit - Dual-Voltage (120V/12V)
- Stereo, New Head Unit & Subwoofer **05/2015**
- Transformer, Shore Power Isolation Boost - 50 Amp/240V/60 Cycle
- Vacuum System, Central - 120V/60 Cycle (Beam®)
- Washer/Dryer Combo, Splendid 2000S 120V
- Full Annual Services Mains & Generator - **Completed 6/2014**

## Test Results

---

### RPM GPH MPH

1000 11.4 10.7

1600 35.8 21

1800 42.6 29.4

2000 47.6 31.5

2070 48.0 33.0

2100 56.0 34.7

2200 66.4 36.7

2280 73.4 37.9

## Hull & Deck Features

---

- Bottom Paint New 5/2015
- Bow Pulpit, Integral
- Bow Rail, 316 Stainless Steel w/Welded Stanchions

- Cleats, Thru-Bolted - Stainless Steel (8)
- Color Schemes (Blue, White)
- Deck Fill Plates, Stainless Steel
- Deck Rails, 316 Stainless Steel
- Gel-Coat, Arctic White & Blue
- Handrails, 316 Stainless Steel
- Hatches, Deck Vent - Translucent w/Locks & Sky Screen Covers (2 - 20x20)
- Light, Stern
- Lights, Navigation - Stainless Steel
- Portlights, Stainless Steel (4 Fixed, 7 Opening)
- Resin, High-Performance Vinylester
- Rub Rail, PVC w/Stainless Steel Insert
- Storage, Transom Wall - Fenders & Gear
- Storage, Davit Concealed
- Stringer System, Fiberglass
- Swim Platform, Extended w/Concealed Stainless Steel Three-Step Swim Ladder w/Integral Grab Handle
- Thru-Hull Fittings, Color-Coordinated
- Vent System, Engine Room - Integral
- Windshield, Tempered/Tinted Curved Glass w/Stainless Steel Frame,
- Windshield Washer System w/Stainless Steel Nozzles
- Windshield Wipers
- Canvas (Sunbrella®):
  - Hardtop Enclosure UPGRADED (06/2104)
  - Slant Curtain
  - Dash Cover
- Windlass System:
  - Anchor, Galvanized
  - Anchor Chute, Stainless Steel
  - Anchor Rope/Chain Storage w/Hatch
  - Anchor Washdown Spigot w/Hose
  - Windlass, Rope/Chain w/Foot Switches
- Certifications:
  - Meets Applicable USCG & ABYC Standards
  - NMMA Certification Cockpit Features

---

## Cabin Features

---

- Carbon Monoxide Monitors
- Carpet, Deep-Pile BCF - 44-Ounce
- Handrails, Elliptical Stainless Steel
- Interior Finish - Cherry Panel
- Lighting, 12V Halogen

- Lighting, 12V Indirect
- Lighting, 120V Halogen
- Outlet, 12V Accessory
- Outlets, 120V GFI Protected
- Outlets, Phone
- Pillows, Accent
- Black Outlet & Switch Plates
- Shades, Fabric Day/Night w/Drape Trim
- Storage, In-Floor
- Wood Trim, Handcrafted

#### Salon:

- Surround w/ DVD & Acoust
- Mirror, Wall Accent
- Seating, Inclining Chair (Ultraleather HPTM)
- Seating, Sofa w/Electrically Operated Slide-Out Bed (Ultraleather HPTM)
- Storage, Gunwale Cabinets - Upper
- Table, Salon (Movable) Hi-Lo w/Stools
- Sony LCD HDTV/ 27" w/Remote, Coax Outlet & Gain Control Panel

#### Galley:

- Countertop, Solid Surface w/Granite-Colored, Sink, Single-Lever Faucet & Sink Cover
- Microwave/Convection Oven, 120V
- Power Vent, 12V
- Refrigerator/Freezer, Upright - Dual-Voltage - 120V/12V
- Storage, Bottle
- Storage, Drawers w/Cutlery Insert
- Storage, Lower Cabinet w/Slide-Out Tray
- Storage, Upper & Lower w/Designated Plate & Glass Storage
- Stove, 240V Three-Burner

#### Master Stateroom:

- Bed, Queen Size Island Berth Mid-ship w/Innerspring Mattress
- Door, Privacy - Cherry Panel
- Mirrored Head Board w/ Storage
- Storage, Side Shelves
- Dynex HDTV 20" Flat Panel - 120V
- Walk-in Hanging Locker w/Shelve, Lights

#### Master Head/Shower:

- Clothes Hook
- Door, Privacy

- Head (VacuFlush®)
- Power Vent, 12V
- Shower w/Seat, Adjustable Shower Wand & Stainless & Acrylic Door with latch
- Storage, Medicine Cabinet - Mirrored
- Vanity w/Corian® Countertop, Sink, Faucet & Storage Below

#### VIP-Stateroom:

- Door, Privacy - Cherry Panel
- Hanging Locker, Cedar-Lined
- Portlights, Stainless Steel (2 - Opening)
- Queen Pedestal Berth Forward
- Storage, Cabinets & Drawers
- LCD HDTV 20" - 120V w/Remote & Coax Outlet

#### VIP-Stateroom Head/Shower:

- Clothes Hook
- Shower w/Seat, Adjustable Shower Wand & Stainless & Acrylic Door with latch
- Door, Privacy - Access from Mid-Stateroom
- Head w/ (VacuFlush®)
- Power Vent, 12V
- Storage, Medicine Cabinet
- Vanity w/Corian® Countertop, Sink, Faucet w/Pullout Shower Sprayer & Storage Below

## Technical Features

---

#### Control Station:

- Alarms, Engine - Oil, Water & Transmission Oil
- Alarms, High-Water - Bilge
- Bow Thruster
- Compass
- Cruisers Custom Control Station, Lights, Trim Tabs, Engine, Key Code, Wiper, & Windlass Control
- Emergency Start System - Engines
- Gel-Coated Dash - Tan
- Horn, Air (Concealed) - Dual Trumpet
- Panel, Instrument - High-Gloss Burl Panel
- Volvo Penta Digital Shift & Throttle
- Volvo Penta Digital Displays, Fuel Flow, RPM, Temperature, Oil Pressure, Water Pressure, Transmission
- Spotlight w/Dual Halogen Bulbs - Remote-Controlled (ACR®)
- Steering, Hydraulic w/ Power-Assisted pump



- Steering, Tilt Wheel & Wood-Accent

#### Electronics:

- Electronics Circuit w/Ground Plate, 50 Amp/12V
- Northstar 6000i GPS Chartplotter
- Furuno Monochrome Radar w/ Open Array Dome 64nm Range
- Robertson AP22 Autopilot
- VHF Radio (Standard Horizon) w/Remote Speaker & 8' Fiberglass Antenna

#### Electrical Systems:

- Batteries, Dekka Marine (**New 2013**)
- Battery Charger/Converter, 120V/50 Amp/12V
- Battery Charger Overcurrent Protection
- Isolators, Galvanic (2)
- Panel, Circuit Breaker - Remote
- Panel, DC Main Breaker
- Panel, Main Distribution - AC
- Panel, Main Distribution - DC
- Panel, Remote Generator
- Shore Power, Cablemaster (Glendinning) 50 Amp/240V/60 Cycle w/75' Cord & Wireless Remote
- Transformers, Shore Power Isolation - 50 Amp/120V/60 Cycle
- TV/Phone Inlet w/TV Antenna, TV Shore Cord &
- Phone Shore Cord
- Wiring, Color-Coded w/Chafe Protection

#### Generator:

- Remote Start w/Muffler, Freshwater Cooling, Fuel Filter, Seacock &
- Seawater Strainer 120V/60 Cycle
- 13.5kW Diesel

#### Air Conditioning/Heating:

- Zone-Controlled Reverse-Cycle System (36,000 BTU)
- Custom Vent System

#### Engine Room:

- Bilge Pumps, 12V Automatic (2)
- Bilge Pumps, 12V Automatic High-Water (1 Bilge, 1 Cabin)
- Blowers, 12V Bilge (2)
- Engine Drip Sumps
- Fire Suppression System - Automatic w/Manual Pull
- Freshwater Cooling

- Gel-Coated Engine Room, Oyster
- Insulation, Engine Room - 2" w/Vinyl Barrier
- Ladder, Stainless Steel - Removable
- Lighting, 12V
- Reverso Oil Changer System - Engines, Transmissions & Generator
- Synchronizer, Engines

#### Fuel System:

- Crossover Fuel System
- Fuel Filters, Racor® (Dual) for Engines (1) for Generator
- Fuel Lines, USCG - Type A-1
- Fuel Tanks, Aluminum w/Anti-Siphon Valves &
- Electric Sending Units (2)
- Tanks 325 gallons (2)

#### Water System:

- Freshwater Washdown Spigot
- Pressure Water System w/Dual 12V Pumps
- Shower, Cockpit - Hot & Cold
- Water Heater, 240V (20-Gallon)
- Water Inlet, Dockside
- Water Tank (150-Gallon)

#### Waste Systems:

- Central Drain System
- Head System (VacuFlush®)
- Holding Tank Level Indicators - MDP & Heads
- Holding Tank w/Dockside Pump-Out (100-Gallon)
- Sump Box w/Pumps - Automatic

#### Underwater Gear:

- Bonding System w/Zinc Hull Plate
- Propellers, Nibral 4-Blade Cup
- Rudders, Manganese-Bronze w/Stainless Steel Posts
- Seacocks on all Underwater Fittings
- Seawater Strainers
- Shaft Logs, Dripless w/Extra Seal Carrier Kit
- Struts, Manganese-Bronze
- Trim Tabs, Hydraulic

## Исключения

При продаже яхты исключаются личные вещи владельца.

## **Отказ от ответственности**

---

Компания предоставляет описание судна или яхты добросовестно, но не может гарантировать точность этой информации, а также не ручается за техническое состояние. Покупатель должен проинструктировать своих агентов или оценщиков исследовать представленную информацию более подробно, по собственному желанию. Продажа судна или яхты, изменение цены или снятие с продажи будет происходить без предварительного уведомления.

# ФОТОГРАФИИ



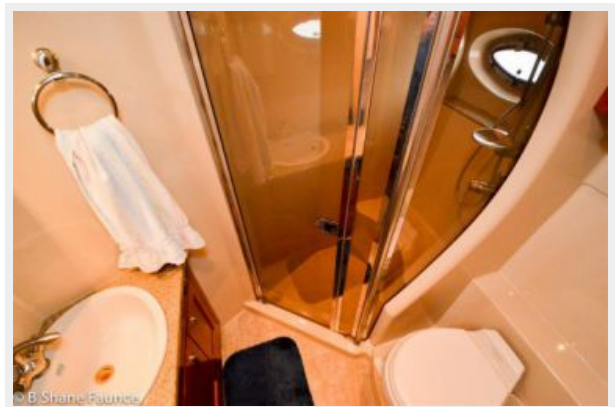
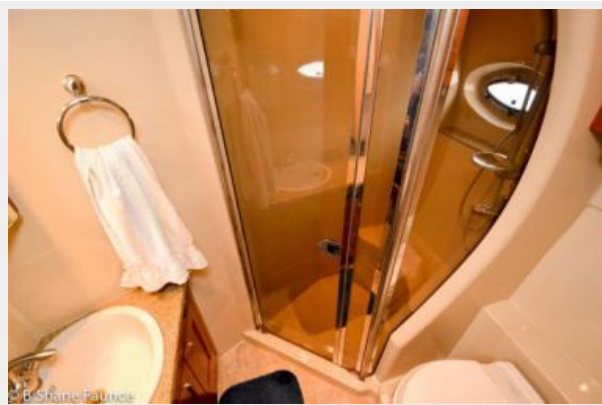










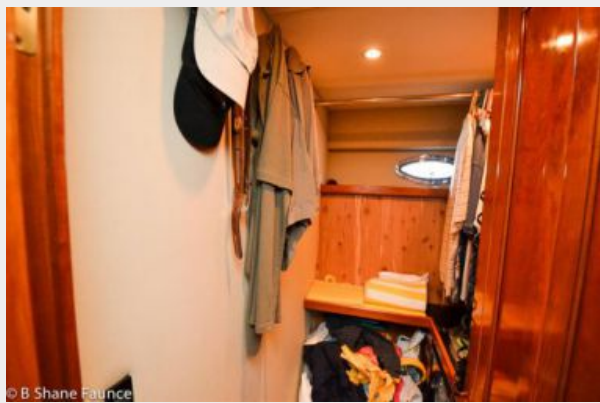


























© B. Shane Faunce



© B. Shane Faunce



© B. Shane Faunce



© B. Shane Faunce



© B. Shane Faunce



© B. Shane Faunce





# КОНТАКТЫ

---

Андрей Шестаков (Andrey Shestakov) – ведущий яхтенный брокер отдела продаж яхт и судов компании Shestakov Yacht Sales Inc. Официальный представитель Shestakov Yacht Sales Inc. для русскоговорящих клиентов в центральном офисе компании в Майами/Форт Лодердейл/Флорида/США.

## Контактная информация

---

Email: [andrey@shestakovyachtsales.com](mailto:andrey@shestakovyachtsales.com)

Web: [shestakovyachtsales.com](http://shestakovyachtsales.com)

## Телефоны

---

Краснодарский край: **+7(918)465-66-44**

США, Майами, Флорида: **+1(954)274-4435**

## Время работы

---

Понедельник – Суббота: **9:00 - 21:00**  
EDT

Воскресенье: **Закрито**

## Адрес

---



Harbour Towne Marina, 850 NE 3rd St,  
STE 213, Dania, FL 33004