

## ALL HANZ ON DECK — CHAPARRAL



**Судостроитель:** CHAPARRAL

**Год постройки:** 2006

**Модель:** Крейсер

**Цена:** ЦЕНА ЯХТЫ ПО ЗАПРОСУ

**Местонахождение:** United States

**Длина общая:** 31' 0" (9.45m)

**Ширина:** 10' 7" (3.23m)

**Мин. осадка:** 2' 1" (0.63m)

**Макс. осадка:** 2' 9" (0.84m)

**Крейс. скорость:** 27 Kts. (31 MPH)

**Макс. скорость:** 38 Kts. (44 MPH)

Купить All Hanz on Deck — CHAPARRAL а также выбрать подходящую вам яхту из нашего каталога яхт вам поможет опытный яхтенный брокер Андрей Шестаков. На сегодняшний день компания Shestakov Yacht Sales Inc. имеет большое количество яхт в собственном списке продаж, а также тесно сотрудничает со всеми крупными яхтенными производителями по всему миру.

Для того чтобы купить яхту All Hanz on Deck — CHAPARRAL а также проконсультироваться по любому вопросу связанному с покупкой, продажей, чартером яхт позвоните по телефону **+7(918)465-66-44**.

# ОГЛАВЛЕНИЕ

---

ОГЛАВЛЕНИЕ	2
ХАРАКТЕРИСТИКИ	3
Обзор	3
Основная информация	3
Размеры	3
Скорость, вместимость и масса	4
Размещение	4
Корпус и палуба	4
Информация о двигателе	4
ПОДРОБНОЕ ОПИСАНИЕ	5
Broker Comments & Upgrades	5
Test Results	6
Hull & Deck Features	6
Cockpit Features	7
Cabin Features	7
Technical Features	9
Electronics	10
Electrical Systems Features	10
Engine Room Features	10
Исключения	10
Отказ от ответственности	11
ФОТОГРАФИИ	12
КОНТАКТЫ	27
Контактная информация	27
Телефоны	27
Время работы	27
Адрес	27

# ХАРАКТЕРИСТИКИ

## Обзор

The Chaparral 310 Signature is an impressive blend of modern styling and first-rate accommodations is a well-built weekend cruiser for those willing to pay a little extra for a quality product. Chaparral builds a good boat, and the 310 stands apart from other cruisers her size for her excellent tooling and above-average finish. Built on a modified-V hull with cored hullsides and a solid fiberglass bottom, the mid-cabin interior sleeps six in a layout typical of most boats in this class. Cherry joinery, designer fabrics, and upscale furnishings highlight the entire cabin, and the galley is notable for its generous storage. Note also that both of the 310's hanging lockers are cedar lined a thoughtful touch. At the helm, the tiered, non-glare dash includes space for flush-mounting a full array of electronics. As many as six can be seated in the cockpit where a full wet bar, transom shower, and portable cooler are standard. Additional features include a transom storage locker, extended swim platform, walk-through windshield, double helm seat with bolsters, and foredeck sun pad. Twin 270hp Volvo sterndrives cruise in the mid 20s (about 35 knots top) If you have looked at XDP Drive boats you will know why this owner upgraded to the Ocean Series DP. Call us today to schedule a showing.

**The owner has his next boat picked out and is ready to move!**

## Основная информация

**Тип судна:** Крейсер

**Подкатегория:** Express

**Модельный год:** 2006

**Год постройки:** 2006

**Страна:** United States

## Размеры

**Длина общая:** 31' 0" (9.45m)

**Ширина:** 10' 7" (3.23m)

**Мин. осадка:** 2' 1" (0.63m)

**Макс. осадка:** 2' 9" (0.84m)

**Трапы:** 12' 3" (3.73m)

**Длина привального бруса:** 33' 4" (10.16m)

## Скорость, вместимость и масса

---

**Крейс. скорость:** 27 Kts. (31 MPH)

**Крейсерская скорость поворота:** 3500 Kts.

**Дальность на крейсерской скорости:** 175

**Макс. скорость:** 38 Kts. (44 MPH)

**Макс. скорость поворота:** 4950 Kts.

**Вместимость воды:** 29 Gallons

**Вместимость сточного бака:** 28 Gallons

**Объем топливного бака:** 147 Gallons

## Размещение

---

**Всего кают:** 1

**Всего ком. состава:** 1

## Корпус и палуба

---

**Материал корпуса:** Fiberglass

## Информация о двигателе

---

**Двигатели:** 2

**Производитель:** Volvo Penta

**Модель:** 5.0L Ocean X

**Тип двигателя:** I/O

**Тип топлива:** Gas/Petrol

# ПОДРОБНОЕ ОПИСАНИЕ

## Broker Comments & Upgrades

- Complete Professional Detail four times per year
- Replaced Starboard Fuel Pump 04/2015
- Replaced Port Fuel Pump 01/2015
- Bottom Paint (Pettit Copper Guard) two coats 10/2014
- Engine and Outdrive Maintenance incl all filters, impellers, new bellows 10/2014
- Hoses and clamps replaced as needed, new port alternator 10/2014
- New Faria GPS speedometer 07/2014
- HVAC inspection and repair including system recharge 07/2014
- Kohler 5kW Generator w/ Sound Shield – 04/2014 (Manifold Replaced, Cooling System Flush, Full Service)
- New custom Deckadence cockpit carpeting with Chaparral logo 2014
- Navionics Charts updated 04/2015
- Replaced Both Engine Water Pump Assemblies 2013
- New Battery Charger (uses 3X less shore power than OEM) 2013
- All four batteries replaced 2013
- New Strataglass with “smiley zippers” 2013
- New Bimini 2013 – also includes 2008 Custom Cockpit and Bow Sunpad Covers
- New dash and stern stereo controls 2012
- New Risers and Props 10/2011
- Replaced OEM HVAC water pump with high output model – 10/2011
- Replaced OEM VHF antenna w/ hi-gain all-copper Baylin unit; relocated for max reach – 2011
- Installed Sea-Dek non-slip decking with Chaparral logo on swim platform – 2010
- Added 1-mile (direct visibility) wi-fi antenna to radar arch – 2010
- Added new Raymarine fish locator/depth sounder – 2011
- Added zip-up Strataglass insert to rear section of camper canvas – 2010
- Added Raymarine 24-mile radar – 2008
- Added KVH satellite TV antenna with two DirecTV receivers – 2008
- Added second house battery and battery monitoring station (cockpit storage area)
- Added Automatic BoatSafe Bilge Heater
- Added Trim-Tab indicator lights
- Replaced OEM bow navigation lights with two-mile LED assemblies
- Replaced cabin halogen bulbs with LEDs – Added under-cabinet fluorescent light in galley
- Replaced standard white lights in radar arch with night-vision friendly red LEDs
- Replaced standard white cockpit courtesy lights with blue LEDs – Added cockpit lighting to lower portion of radar arch
- Relocated cockpit audio speakers to listener friendly position higher on the radar arch
- Added stainless steel pivoting “C-lift” dinghy davits with standoffs (dinghy is negotiable)
- MMSI Number and GPS interfaced with DSC-capable VHF radio

- Four standard adult life vests, life ring, floatable cushion, dock lines and four fenders at-sea emergency repair kit, including hose plugs, extra impellers for engines and generator, belts, anodes, prop removal tool and all manuals

## Test Results

---

### RPM GPH MPH

1000	3.2	6.2
1500	5	8.7
2000	9	10.4
2500	12	13.0
3000	16	20.8
3500	21	30.1
4000	27.4	35.5
4950	42.9	42.9

## Hull & Deck Features

---

- Anchor Chute w/Hawse Pipe – Concealed w/Hatch
- Bottom Paint
- Bow & Stern Eyes, Stainless Steel
- Bow Rail, Stainless Steel w/Welded Stanchions
- Cleats, Thru-Bolted – Stainless Steel (8) Deck Fill Plates,
- Stainless Steel Drain Plug, Brass-Threaded – Garboard
- Gel Coat, Arctic White
- Graphics, Striping
- Hatch, Deck Vent – Translucent w/Locks & Sky Screen Cover (3)
- Hull Windows (4)
- Lights, Navigation – Stainless Steel & LED **UPGRADE**
- Rub Rail, PVC w/Stainless-Steel Insert
- Storage, Transom Wall – For Fenders & Gear
- Swim Platform, Extended w/Concealed Stainless- Steel Swim Ladder
- Dinghy Davit (Tender Negotiable)
- Thru-Hull Fittings, Stainless Steel
- Vent System, Engine Room
- Windshield, Tempered/Tinted Curved Glass w/Walk-Thru
- Windshield Wipers

Canvas (Sunbrella®):

- Aft Curtain w/Bungee Straps

- Aft Sunshade – Fixed w/Stainless – Steel Framing
- Camper Enclosure
- Front Curtains
- Side Curtains

#### Certifications:

- Meets Applicable USCG & ABYC Standards
- NMMA Certification

## Cockpit Features

---

- Beverage Holders (8)
- Sea-Dek non-slip deck matting (NEW 2010) **UPGRADE**
- Cooler, Carry-On w/Designated Storage
- Door, Cabin Entry (Sliding & Lockable)
- Door, Transom – Acrylic w/Stainless- Steel Frame
- Floor Liner, Fiberglass – Self-Bailing
- Hatch, Emergency Pull Handle & Prop Rod
- Hatch, Engine Room – Electrically Actuated
- Lighting, Indirect
- Outlet, 12V Accessory
- Outlet, 120V GFI Protected
- Seating, Aft Bench with dedicated storage
- Seating, Aft-Facing w/Molded Fiberglass Storage Base
- Seating, Helm Bench w/Dual Flip-Up Thigh-Rise Bolsters
- Sport Spoiler w/Overhead Lighting
- Storage, Side Panel – Helm
- Table, Cockpit
- Wet Bar w/ Sink, Faucet, Beverage Holders, Stainless-Steel Handrail, Refrigerator

## Cabin Features

---

- Carbon Monoxide Monitor
- Carpet – Snap-in with Fiberglass liner
- Lighting, 12V
- Outlets, 120V GFI Protected
- Pillows, Accent
- Stereo, Sony. 12V AM/FM Single CD, Speakers (4) &
- Digital Cockpit Remote Control
- Wood Interior Package – Cherry Wood-Finish Cabinets
- Salon: Lighting, 12V
- Seating, Ultraleather HP™ Sofa – Converts to Bed

- Storage, Gunwale Cabinets
- Table, Dinette – Solid Wood w/Dedicated Storage

**Galley:**

- Countertop, Solid Surface w/Stainless-Steel Sink & Faucet
- Handrail, Stainless Steel
- Lighting, 12V
- Microwave 120V/60 Cycle
- Outlet, 12V Accessory
- Power Vent, 12V
- Refrigerator, Dual-Voltage – 120V/12V
- Storage, Drawers w/Cutlery Insert
- Storage, Upper & Lower
- Stove, 120V Recessed Two-Burner w/Solid-Surface Cover w/Dedicated Storage
- Trash Receptacle

**V-Berth:**

- Berth, Angled Double w/Visco Elastic Foam Mattress & Storage Below
- Curtain, Privacy (Hideaway)
- Mirrored Rope Locker Bulkhead
- Sheet Set – Fitted (Neutral Color)
- Storage Cabinet w/Shelves – Starboard
- Storage, Gunwale Storage,
- Hanging Locker – Port

**Mid-Berth:**

- Curtain, Privacy (Hideaway)
- Window on aft Bulkhead
- Seating, Ultraleather
- Conversation Pit – Converts to Double Berth Dedicated Filler Cushions
- Storage, Below Seating
- Storage, Upper Cabinet
- TV w/ DVD and SAT TV reciever

**Head:**

- Flooring – Fiberglass with Non-skid
- Handrail, Stainless Steel
- Head (VacuFlush Freshwater)
- Head, Enclosed – Full Fiberglass w/Shower & Curtain
- Mirror, Head Wall
- Power Vent, 12V
- Storage, Medicine Cabinet



- Storage, Upper Shelves w/Stainless- Steel Rails
- Vanity w/Sink, Fiberglass counters, Faucet w/Pullout Sprayer & Storage Below

## Technical Features

---

### Control Station:

- Alarms, High-Water – Bilge & Cabin
- Compass
- Emergency Start System – Engines
- Horn
- Instrument Panels – High-Gloss Burl Faria Gauges with Chrome Bezels (Includes: Fuel Level, Oil Pressure, Voltmeter, Water Temperature)
- Faria Tachometers (2)
- Steering, Power-Assisted
- Steering, Tilt Wheel
- Steering Wheel, Wood-Accent

### Fuel System Features:

- Fuel Lines, USCG – Type A-1
- Fuel Tanks, Aluminum w/Electric
- Shutoff Valves & Electric Sending Units

### Water System Features:

- Freshwater Washdown Spigot
- Pressure Water System w/12V Pump
- Shower, Cockpit – Hot & Cold
- Water Heater, 120V (6 Gallon)
- w/Exchanger
- Water Inlet, Dockside
- Water Manifold System
- Water Tank (35 Gallon)

### Waste System Features:

- Head System (VacuFlush.)
- Holding Tank Level Indicator – MDP
- Holding Tank w/Dockside Pump-Out (28 Gallon)
- Sump Box w/Pump – Automatic

### Underwater Gear Features:

- Bonding System w/Zinc Hull Plate
- Propellers, Stainless-Steel 3-Blade

- Ocean X Series Duo-Prop Drive (NEW 2011) **UPGRADE**
- Trim Tabs, Hydraulic

## Electronics

---

- VHF Radio w/8' Fiberglass Antenna & Stainless-Steel Ratchet Mount
- Raymarine E80 Chartplotter & Radar
- Raymarine Tri-Data (Depth, Speed, Temp)
- KVH TracVision M2

## Electrical Systems Features

---

- Battery Charger/Converter, 120V Cycle
- Battery Switches (2)
- Battery Trays w/Mounts
- Breaker Panels
- Isolator, Galvanic
- Kohler 5kW Generator w/ Soundshield (04/2014 – Manifold Replaced, Cooling System Flush, Full Service)
- Panel, DC Main Breaker
- Panel, Main Distribution – AC
- Panel, Main Distribution – DC
- Shore Power, 120V/30 Amp w/50' Cord & Adapter
- Wiring, Color Coded w/Chafe Protection

## Engine Room Features

---

- Twin - Volvo Penta 5.0L Osi Engines with Ocean X Series Duo Prop (545 hours) Drives New in **10/2011**
- Bilge Pump, 12V Automatic
- Bilge Pumps, 12V Automatic High-
- Water (1 Bilge, 1 Cabin)
- Blowers, 12V Bilge (2)
- Fire Suppression System – Automatic w/Manual Pull
- Gel-Coated Engine Room, Pearl
- Insulation, Engine Room – 2" w/Vinyl Barrier Under Main Hatch
- Lighting, 12V
- Oil Filters – Remote

## Исключения

---

При продаже яхты исключаются личные вещи владельца.

## Отказ от ответственности

---

Компания предоставляет описание судна или яхты добросовестно, но не может гарантировать точность этой информации, а также не ручается за техническое состояние. Покупатель должен проинструктировать своих агентов или оценщиков исследовать представленную информацию более подробно, по собственному желанию. Продажа судна или яхты, изменение цены или снятие с продажи будет происходить без предварительного уведомления.

# ФОТОГРАФИИ

































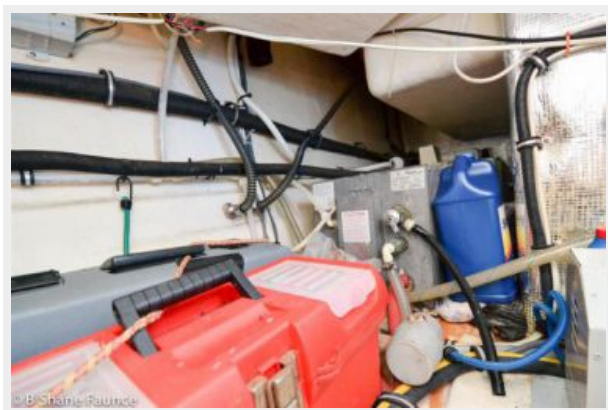












# КОНТАКТЫ

---

Андрей Шестаков (Andrey Shestakov) – ведущий яхтенный брокер отдела продаж яхт и судов компании Shestakov Yacht Sales Inc. Официальный представитель Shestakov Yacht Sales Inc. для русскоговорящих клиентов в центральном офисе компании в Майами/Форт Лодердейл/Флорида/США.

## Контактная информация

---

Email: [andrey@shestakovyachtsales.com](mailto:andrey@shestakovyachtsales.com)

Web: [shestakovyachtsales.com](http://shestakovyachtsales.com)

## Телефоны

---

Краснодарский край: **+7(918)465-66-44**

США, Майами, Флорида: **+1(954)274-4435**

## Время работы

---

Понедельник – Суббота: **9:00 - 21:00**  
EDT

Воскресенье: **Закрето**

## Адрес

---



Harbour Towne Marina, 850 NE 3rd St,  
STE 213, Dania, FL 33004