

## FRIENDSHIP — HATTERAS



**Builder:** HATTERAS

**Year Built:** 1996

**Model:** Sport Fisherman

**Price:** PRICE ON APPLICATION

**Location:** United States

**LOA:** 65' 0" (19.81m)

**Beam:** 18' 0" (5.49m)

**Max Draft:** 5' 4" (1.63m)

**Cruise Speed:** 24 Kts. (28 MPH)

**Max Speed:** 30 Kts. (35 MPH)

Our experienced yacht broker, Andrey Shestakov, will help you choose and buy a yacht that best suits your needs **FRIENDSHIP — HATTERAS** from our catalogue. Presently, at Shestakov Yacht Sales Inc., we have a wide variety of yachts available on our sale's list. We also work in close contact with all the big yacht manufacturers from all over the world.

If you would like to buy a yacht **FRIENDSHIP — HATTERAS** or would like help answering any questions concerning purchasing, selling or chartering a yacht, please call **+1(954)274-4435**

# TABLE OF CONTENTS

TABLE OF CONTENTS	2
SPECIFICATIONS	4
Basic Information	4
Dimensions	4
Speed, Capacities and Weight	4
Accommodations	4
Hull and Deck Information	4
Engine Information	5
DETAILED INFORMATION	6
Preliminary Specifications	6
Complete Refit 2013/2014	6
Accommodations	7
Aft Deck	7
Salon	8
Dining	8
Galley	8
Master Stateroom - Forward	8
Guest Stateroom - Port	9
Guest Stateroom - Starboard	9
Crew Quarters	9
Wheelhouse	9
Electrical	10
Engine Room	10
Deck Equipment	11
Tender	11
Safety Equipment	11
Exclusions	12
Exclusions	12

---

Disclaimer	12
PHOTOS	13
CONTACTS	21
Contact details	21
Telephones	21
Office hours	21
Address	21

---

# SPECIFICATIONS

---

## Basic Information

---

**Category:** Sport Fisherman

**Sub Category:** Convertible

**Model Year:** 1997

**Year Built:** 1996

**Country:** United States

**Coast Guard #:** 1071137

**Vessel Top:** Enclosed

## Dimensions

---

**LOA:** 65' 0" (19.81m)

**Beam:** 18' 0" (5.49m)

**Max Draft:** 5' 4" (1.63m)

## Speed, Capacities and Weight

---

**Cruise Speed:** 24 Kts. (28 MPH)

**Max Speed:** 30 Kts. (35 MPH)

**Displacement:** 102000 Pounds

**Water Capacity:** 460 Gallons

**Holding Tank:** 60 Gallons

**Fuel Capacity:** 1674 Gallons

## Accommodations

---

**Total Cabins:** 3

**Sleeps:** 6

**Total Heads:** 3

**Crew Cabin:** 1

**Crew Sleeps:** 2

## Hull and Deck Information

---

**Hull Material:** Fiberglass

**Hull Configuration:** Semi Vee

---

## Engine Information

---

**Engines:** 2

**Manufacturer:** Detroit Diesel

**Model:** 16V92TA DDEC

**Engine Type:** Inboard

**Fuel Type:** Diesel

---

# DETAILED INFORMATION

---

## Preliminary Specifications

---

This Company offers the details of this vessel in good faith but cannot guarantee or warrant the accuracy of this information nor warrant the condition of the vessel. A buyer should instruct his agents, or his surveyors, to investigate such details as the buyer desires validated. This vessel is offered subject to prior sale, price change, or withdrawal without notice.

## Complete Refit 2013/2014

---

### Exterior

- Repaint topside including non-skid Awl-Grip
- Hatteras swim platform with ladder
- All new latches
- New stainless steel rams and new motors new hoses for both trim tabs
- New aluminum frame and canvas over cockpit
- Large Bluewater teak and high polish 27 coats table cockpit
- New bilge pumps and fish tank pumps
- New compressors and adjustable thermostats on outside refrigeration 3 units
- New exterior DDEC controls
- New 6 man life raft
- New Intellian Satellite
- Both propellers redone and balanced by SS propellers
- New cutlass bearings both shafts
- New stainless steel 75 pound anchor
- 2008 11' Zodiac tender with 40hp Yamaha plus new mounts and cover
- New outside speaker and satellite radio system with remote
- New blue LED underwater lights and cockpit LED lights and installation

### Interior

- Total refit of old interior and lighting. 1 year project all new Mahogany wood interior everywhere including bathrooms. Mahogany Wood Panel Material from Ultra Wood Pompano Beach
- New Aft Deck Entry Door – Custom Glass Door
- New LED lighting thru out
- New stove, new microwave, new ice maker , new SubZero refrigerator
- 7 New Samsung TVs
- New custom Ultra Leather sofa and custom Hatteras table
- All air-conditioning and fan motors redone, repaired or replaced new

- New Garmin GPS Maps 7212 plus new VHF radios and other electronic items and installation
- New headliner, new interior Ultra- leather

## Engine Room

- All hoses, clamps replaced on both engines, heat exchangers redone on both engines, all items checked including turbos work completed by RPM Ft Lauderdale.
- Both generators gone thru and parts replaced
- Stabilizers rebuilt plus new larger fins
- Water maker rebuilt and new water heater

## Accommodations

---

Friendship sleeps 6 in the Master and Guest Staterooms plus Crew Quarters. There are 3 Staterooms and 3 Heads with showers plus crew cabin forward of the Engine Room. Crew cabin is separate from Owner's party. The hull is an extended and improved version of the 60 Convertible hull with a finer entry, balsa-cored hull sides and prop pockets to reduce draft. Master Stateroom is forward with queen centerline berth and private head with Jacuzzi tub. Guest staterooms midship, each with private head and shower. Port guest has twin side-by-side berths which convert to queen if desired and starboard guest has cross over berths and access door to crew cabin and engine room. Washer/Dryer is situated outboard in crew cabin to port. The Main Salon is laid out with a large custom Ultraleather U-Shaped settee with storage below, opposite are two leather chairs, entertainment center and main electrical panels behind doors. Moving forward is a large dinette. To port is the well-equipped Galley with ample storage. The enclosed, air conditioned bridge above, include two helm seats and two settees situated aft and port. The large and well laid out helm stations include full electronics, engine control and monitoring.

**TOTAL REFIT 2013/2014! SEE COMPLETE REFIT 2013/2014 SECTION FOR FULL DETAILS ABOVE.**

## Aft Deck

---

- New (2014) Bluewater teak high polish table with 7 chairs
- (3) Refrigerators with new (2014) adjustable thermostats and new compressors
- Storage
- New (2014) Camera
- Engine Room Access
- New (2014) 28' Samsung TV
- New (2014) Aluminum retractable frame and canvas over cockpit
- New (2014) Hatteras swim platform with ladder
- New (2014) LED lighting
- New (2014) Aft Deck Entry Door – Custom Glass Door

---

## Salon

---

- New (2014) custom Ultraleather white U-Shaped couch with storage underneath
- New (2014) custom Hatteras wood table with polished stainless steel pedestal
- (2) New (2014) Brown leather swivel chairs on Starboard Side
- New (2014) 55' Samsung TV
- Carpet sole with black runner
- White Blinds

---

## Dining

---

- New (2014) Granite table with Ultraleather white custom seating
- Raised Tile Flooring
- Sharp Aquos TV
- Direct TV receiver

---

## Galley

---

- New (2014) Brown granite countertops
- Black & White tile flooring
- New (2014) Mahogany wood cabinets
- New (2014) LED lighting throughout the boat
- New (2014) under mounted single stainless steel sink
- New (2014) Stainless steel faucet with retractable sprayer
- Kenmore Dishwasher
- New (2014) IceMaker
- New (2014) Sub-Zero Freezer
- New (2014) Sub-Zero Refrigerator
- New (2014) Whirlpool 4 Burner Cooktop Range
- New (2014) Sharp Carousel Convection Oven

---

## Master Stateroom - Forward

---

- Queen berth centerline with new (2014) mattress and bedding
- New (2014) Mahogany wood interior
- Carpet
- New 32" Samsung TV
- Sony CD Player
- Walk-in Closet on Portside
- Wood drawers port & Starboard
- New (2014) LED Reading Lights



- Ensuite Head: single sink, Jacuzzi bathtub/shower with glass door, Vacuflush head, tile flooring

---

## Guest Stateroom - Port

---

- (2) Twin berths with new (2014) mattresses and bedding
- Twin berths can convert to Queen berth if desired
- New (2014) Mahogany wood interior
- Black drawers between berths
- Drawers under berths
- Carpet
- New (2014) 26" Samsung TV
- Hanging Locker
- New (2014) LED Reading Lights
- Ensuite Head: Tile floor, single sink, shower, Vacuflush head, door access to hallway

---

## Guest Stateroom - Starboard

---

- Twin Crossover Berths with new (2014) mattresses and bedding
- New (2014) Mahogany wood interior
- Drawers under berth
- Carpet
- New (2014) 26" Samsung TV
- Hanging Locker
- New (2014) LED Reading Lights
- Door access to Engine Room & Crew Quarters
- Ensuite Head: Single sink, white countertops, shower, tile flooring

---

## Crew Quarters

---

- Twin bunks with new bedding
- Carpeted
- New (2014) 26" Samsung TV
- New (2014) LED lighting
- New (2014) Midea Washer/Dryer

---

## Wheelhouse

---

- Enclosed Bridge
- New (2014) Mahogany wood interior

- New (2014) Air Conditioning
- White leather couch port side
- White leather couch starboard side
- New (2014) Custom Ultraleather Captain's Chair
- Carpet
- Window Coverings
- Simrad CE32 – Plotter/Electronic Chart
- Interphase – Twin Scope
- Datamarine Link – Speed
- Datamarine Link – Depth Finder
- Furuno – FCV-292 Color Depth Finder
- Raytheon 430 - Hailer
- Simrad AP20 - Autopilot
- New (2014) Garmin – 7212
- Northstar 941X – Global Positioning System
- New (2014) 19" Samsung TV
- Compass
- EPIRB – GME – Accusat
- New (2014) VHF Icom – M504
- New (2014) VHF Icom - M59
- New (2014) VHF Seas-235
- New (2014) Satcom Inteallian
- New (2014) (3) Speakers
- New (2014) (2) Cameras

---

## Electrical

---

- (2) Onan 20kW, 240V Generators (approximate hours: Port 1407 / Stbd 1188)
- Dual 240 Shore power Input
- Dual Glendenning cablemaster (port and starboard)
- System Voltage: 12/32 DC: 110/240 AC
- Battery Banks: (2) New (2014) Douglas 12v/(2) New (2014) Douglas 32v
- New (2014) Charles battery charger
- New (2014) Amp Meters/Regulators

---

## Engine Room

---

- (2) Detroit Diesel 16V92TA, 1450 hp (approximate hours: Port 1557 / Stbd 1573)
- Zahnradfabrik Gearboxes
- Radice (Rolla) 5 Blade Props 44x85 (Rebalanced at SS Props 2014)
- New (2014) Cutlass bearings both shafts
- Naiad Stabilizers 4.3 Fins (bigger fins and rebuilt 2014)

- Dual Racor Fuel Filters
- Marine Rite Fresh Water System
- GalleyMaid RO400 Watermaker – 400 gallons per day (Rebuilt 2014)
- New and/or Rebuilt (2014) CruisAir SMX air conditioner (6 units) with reverse cycle heat
- Hynautic K3HB Steering System
- VacuFlush head system with new (2014) pumps
- (5) New (2014) Auto bilge pumps
- Airseps
- Oil Change System
- DDEC engine control system

---

## Deck Equipment

---

- GalleyMaid Anchor Windlass System
- New (2014) 75lb Stainless Steel Anchor
- 10 Chain & Rope
- Deck Capstans
- Marquip 2500 lb Rebuilt Tender Davits
- New (2014) Spotlight
- New (2014) Blue LED underwater lights
- Built-in tackle/bait prep center
- Fiberglass sink
- Fish box located in transom
- Built-in bait freezer
- New (2014) speaker and satellite radio system with remote
- Repainted (2014) Topsides including non-skid Awl-Grip

---

## Tender

---

- 2008 10' Zodiac with 40 hp Yamaha Outboard plus new (2014) mounts and cover (Approximately 94 hours on outboard)

---

## Safety Equipment

---

- (4) Cameras: 1 Engine Room, 1 Cockpit and 2 Flybridge
- Halon fire protection
- Portable fire extinguishers
- Fire/Heat/Smoke detectors
- New (2014) 6-Man life raft
- Life Ring
- New (2014) EPIRB

- New (2014) Flares
- Medical First Aid Kit

---

## Exclusions

---

Exclusions to include but are not limited to owner's personal items and artwork. A detailed list of exclusions to be provided at time of sale.

---

## Exclusions

---

Owner's personal belongings.

---

## Disclaimer

---

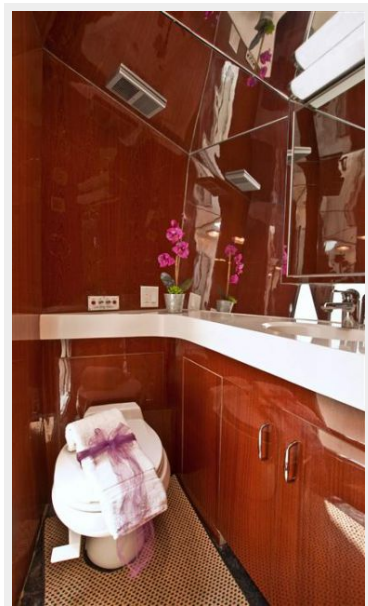
The Company offers the details of this vessel or yacht in good faith but cannot guarantee or warrant the accuracy of this information nor warrant the condition of the vessel. A buyer should instruct his representatives, agents, or his surveyors, to investigate such details as the buyer desires validated. This vessel or yacht is offered subject to prior sale, price change, or withdrawal without notice.

# PHOTOS

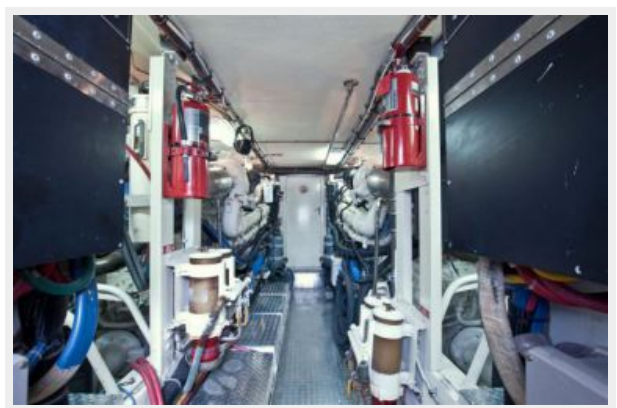
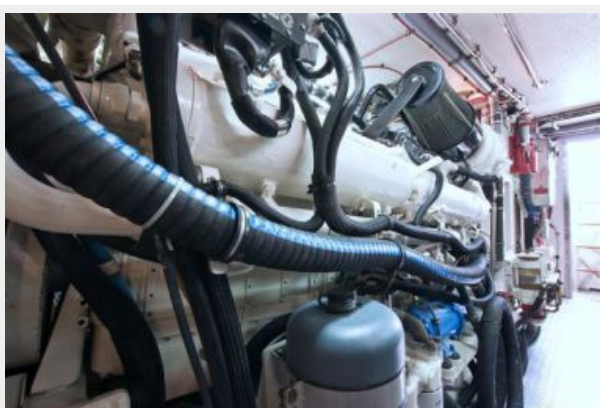


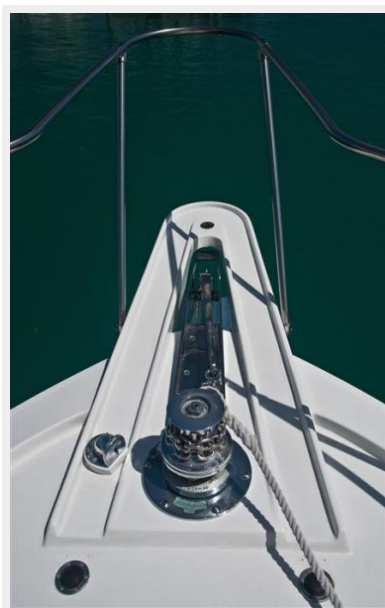
















---

# CONTACTS

---

Andrey Shestakov, leading yacht broker of the sales department of Shestakov Yacht Sales Inc. Shestakov Yacht Sales Inc., the official representative of the Miami/Fort Lauderdale FL headquarters.

---

## Contact details

---

Email: [andrey@shestakovyachtsales.com](mailto:andrey@shestakovyachtsales.com)

Web: [shestakovyachtsales.com/en/](http://shestakovyachtsales.com/en/)

---

## Telephones

---

USA: +1(954)274-4435

---

## Office hours

---

Monday – Saturday: **9:00 - 21:00** EDT

Sunday: **closed**

---

## Address

---



Harbour Towne Marina, 850 NE 3rd St,  
STE 213, Dania, FL 33004