

## LIVERNANO — PRINCESS YACHTS



**Builder:** PRINCESS YACHTS

**Year Built:** 2010

**Model:** Motor Yacht

**Price:** PRICE ON APPLICATION

**Location:** United States

**LOA:** 95' 0" (28.96m)

**Beam:** 23' 0" (7.01m)

**Max Draft:** 6' 0" (1.83m)

**Cruise Speed:** 18 Kts. (21 MPH)

**Max Speed:** 28 Kts. (32 MPH)

Our experienced yacht broker, Andrey Shestakov, will help you choose and buy a yacht that best suits your needs **LIVERNANO — PRINCESS YACHTS** from our catalogue. Presently, at Shestakov Yacht Sales Inc., we have a wide variety of yachts available on our sale's list. We also work in close contact with all the big yacht manufacturers from all over the world.

If you would like to buy a yacht **LIVERNANO — PRINCESS YACHTS** or would like help answering any questions concerning purchasing, selling or chartering a yacht, please call **+1(954)274-4435**

# TABLE OF CONTENTS

TABLE OF CONTENTS	2
SPECIFICATIONS	4
Overview	4
Basic Information	4
Dimensions	4
Speed, Capacities and Weight	4
Accommodations	5
Hull and Deck Information	5
Engine Information	5
DETAILED INFORMATION	6
Accommodations	6
Machinery	6
Communication System	6
Navigation Systems	7
Audio & Visual Equipment	7
Tenders and Toys	7
Deck Equipment	7
Security, Fire Fighting & Safety Equipment	7
Broker's Comment	7
Exclusions	8
Disclaimer	8
PHOTOS	9
Main Salon	9
Dining	9
Stairway	9
Galley	9
Master Stateroom	9
Master Stateroom	9

Master Bath	10
Master Bath	10
Master Shower	10
VIP Stateroom	10
Double Stateroom	10
Guest Stateroom	10
Guest Stateroom	11
Pilothouse	11
Pilothouse	11
Aft Deck	11
Flybridge	11
Engine Room	11
Aft View	12
General Arrangement	12
Destination	12
CONTACTS	13
Contact details	13
Telephones	13
Office hours	13
Address	13

# SPECIFICATIONS

## Overview

LIVERNANO is a beautiful 2010 Princess 95’ found in excellent condition. She has been lightly used and well kept. Her five stateroom layout is incredibly spacious for a vessel of this size. Her aft deck, main saloon and bridge deck make for ample entertainment space for lounging, dining or sunning. LIVERNANO is a very high spec build with many upgrades. She is well appointed throughout and her warm and inviting décor has to be seen.

## Basic Information

Category: Motor Yacht	Model Year: 2010
Year Built: 2010	Refit Year: 2016
Country: United States	

## Dimensions

LOA: 95' 0" (28.96m)	Beam: 23' 0" (7.01m)
Max Draft: 6' 0" (1.83m)	MFG Length: 96' 5" (29.39m)

## Speed, Capacities and Weight

Cruise Speed: 18 Kts. (21 MPH)	Max Speed: 28 Kts. (32 MPH)
Gross Tonnage: 128 Pounds	Water Capacity: 530 Gallons
Fuel Capacity: 2950 Gallons	

## Accommodations

Total Cabins: 5	Sleeps: 10
Total Heads: 5	Captain Cabin: True
Crew Cabin: 2	Crew Berths: 4
Crew Sleeps: 4	Crew Heads: 1

## Hull and Deck Information

Hull Material: Fiberglass	Hull Color: White
---------------------------	-------------------

## Engine Information

Engines: 2	Manufacturer: MTU
Model: 16V2000 M93	Engine Type: Inboard
Fuel Type: Diesel	

---

# DETAILED INFORMATION

---

## Accommodations

---

Walk Through Forward from the large main aft deck which is laid out with settee, table, chairs and bar, one goes through the floor to ceiling glass sliding doors to the main salon area. Fitted with a vast relaxed sofa area to port, flowing forward into an elegant formal dining area for up to eight guests. Samsung HD 55" flatscreen TV with DirecTV, BOSE Sound Touch surround system, Apple TV, Apple Airplay, and Wii. Continue forward one will reach a large and well laid out galley to port with a day toilet to starboard. Continue forward to reach the state of the art equipped pilothouse. In this foyer area one will find the stair to the five stateroom accommodation. From the main deck foyer one can make their way to a spacious bridge deck with wet bar, lounge areas, sun pads and dining for eight. Master Stateroom The full beam king berth master cabin is located amidship, fitted with vanity area to port and an extremely spacious en suite complete with tub, walk in shower, and twin sinks. Samsung HD 46" flatscreen TV with DirecTV, BOSE surround sound system, AppleTV, and Apple Airplay. Twin Stateroom 1 Forward and to starboard is the side by side twin cabin also with en suite and wardrobe. Samsung HD 19" flatscreen TV with DirecTV, BOSE surround sound system, AppleTV, and Apple Airplay. Twin Stateroom 2 Further forward to starboard an additional twin cabin with over and under berths and wardrobe. Double Stateroom Forward and to port is a king berth guest cabin with en suite and wardrobe. Samsung HD 26" flatscreen TV with DirecTV, BOSE surround sound system, AppleTV, and Apple Airplay. VIP Stateroom Located in the bow is a large king berth guest VIP cabin, with wardrobe and en suite. Samsung HD 26" flatscreen TV with DirecTV, BOSE surround sound system, AppleTV, and Apple Airplay.

## Machinery

---

Generators and Electricity Output: 50 HZ, 220v Generators: 2x Cummins Onan with 3400 hours Shore Power: A-Sea Shore power converter/1 cord/1 or 3 Phase, or 480 Batteries Main Engine Starting: 24v Generator Starting: 24v Emergency: 24v Other Machinery Watermakers: Technicomar - 1,000 gpd Stabilizers: ABT Trac with touch screen controls and At Rest Stabilization (zero speed) Trim Tabs: Bennett with controls in the pilot house and flybridge Bow Thruster: American bow thruster and stern thruster Fuel Separator & Filtration; Racor Air Conditioning: CruiseAir, 3 chillers Redundant/Backup pumps in place for toilet system, AC raw water, AC fresh water loop, black water pump out, and grey water pump out

## Communication System

---

VSAT Telephone System: Panasonic PBX KX-TDA30 with VOIP line WAVE WiFi internet Cradlepoint 4G modem VHF: ICOM IC-M506 (two with remote stations on sundeck)

---

## Navigation Systems

---

Radars: Furuno Bridge Plotters: Furuno TZ Touch2 15", capable of repeating on iPad with Furuno App Flybridge Plotters: Furuno TZ Touch2 12", capable of repeating on iPad with Furuno App Magnetic Compass: Plastimo 135 Auto Pilot: Furuno NAVPilot Depth Sounder: Furuno FI-70 GPS: Furuno GP-32 Ships Computer: Princess Touch Screen Wind/Speed Log: Furuno FI-70 Navtex; Furuno NX-700 AIS: Furuno FA-150

---

## Audio & Visual Equipment

---

DSS Satellite in guest cabins, main salon, pilothouse, and sun deck. Bose Surround Sound System throughout, with Apple AirPlay to wirelessly stream your music collection. Wifi throughout the yacht. There is a HP Envy printer with wireless printing capabilities.

---

## Tenders and Toys

---

Tender: Excluded SeaDoo: Excluded Dive Gear; Snorkel Gear - 8 sets Recreation: Wake Board, Towables, Trampoline, Skis

---

## Deck Equipment

---

Anchor Windlass: 2x Lewmar Aft Warping Capstans; 2x Lewmar Anchors: 2x Stainless Steel Anchor Chain: 2x 250' Boat Crane and Davits: Opacmar Davit on sundeck Passerelle: Opacmar port stern with wireless remote Swimming Platform: Hydraulic with wireless remote Gangway: Marquip 7-Step with teak Underwater Lights: 3x 10,000 lumin blue lights on transom

---

## Security, Fire Fighting & Safety Equipment

---

Security Equipment Lorex HD CCTV System with DVR Cameras: 4 with infrared Monitors: 1 Web app/interface to view CCTV remotely Fire Fighting Equipment Fire Control System: Fireboy Engine shut down Bilge/Fire Pumps: 2x Fire hydrants with hoses Extinguishers: 13 Alarms: yes Safety Equipment Life Rafts: 2x 12 person rafts Life Rings: 1 EPIRBS: 1 Ditch Bag with secondary EPIRB, flares, and PLB

---

## Broker's Comment

---

LIVERNANO is a must see yacht. She is found in excellent condition and has been kept "like new" by her professional full time Captain and crew. LIVERNANO completed a refit in January 2016 with a major upgrade of the latest navigation and communications electronics, including VSAT and TV antennas. Her layout is perfect for charter or private use with spacious accommodation and public space throughout. You will not be disappointed by what you see

when you inspect LIVERNANO.

## Exclusions

---

Owner's personal belongings.

## Disclaimer

---

The Company offers the details of this vessel or yacht in good faith but cannot guarantee or warrant the accuracy of this information nor warrant the condition of the vessel. A buyer should instruct his representatives, agents, or his surveyors, to investigate such details as the buyer desires validated. This vessel or yacht is offered subject to prior sale, price change, or withdrawal without notice.



# PHOTOS

## Main Salon



## Dining



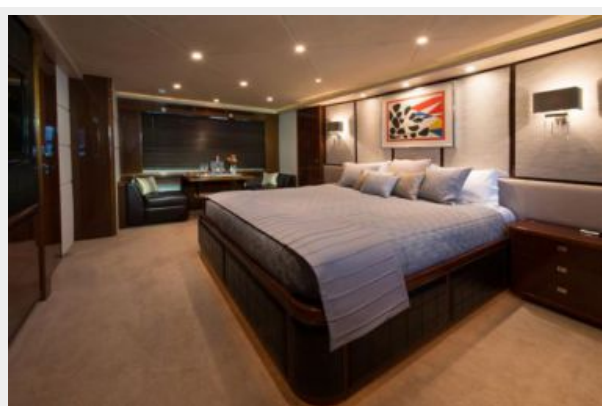
## Stairway



## Galley

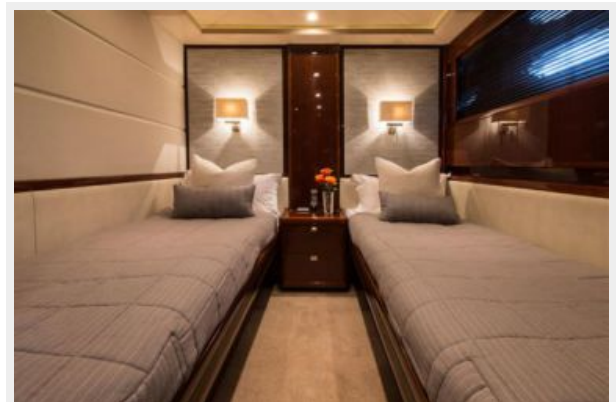


## Master Stateroom



## Master Stateroom



**Master Bath****Master Bath****Master Shower****VIP Stateroom****Double Stateroom****Guest Stateroom**



**Guest Stateroom****Pilothouse****Pilothouse****Aft Deck****Flybridge****Engine Room**

### Aft View



### General Arrangement



### Destination



# CONTACTS

---

Andrey Shestakov, leading yacht broker of the sales department of Shestakov Yacht Sales Inc. Shestakov Yacht Sales Inc., the official representative of the Miami/Fort Lauderdale FL headquarters.

## Contact details

---

Email: **andrey@shestakovyachtsales.com**

Web: [shestakovyachtsales.com/en/](http://shestakovyachtsales.com/en/)

## Telephones

---

USA: **+1(954)274-4435**

## Office hours

---

Monday – Saturday: **9:00 - 21:00 EDT**

Sunday: **closed**

## Address

---



Harbour Towne Marina, 850 NE 3rd St,  
STE 213, Dania, FL 33004