

SILVERLINING — CUSTOM YACHT



Builder: CUSTOM YACHT

Year Built: 2011

Model: Sloop

Price: PRICE ON APPLICATION

Location: Thailand

LOA: 104' 0" (31.70m)

Beam: 23' 7" (7.19m)

Min Draft: 11' 5" (3.48m)

Cruise Speed: 10 Kts. (12 MPH)

Max Speed: 12 Kts. (14 MPH)

Our experienced yacht broker, Andrey Shestakov, will help you choose and buy a yacht that best suits your needs **Silverlining — CUSTOM YACHT** from our catalogue. Presently, at Shestakov Yacht Sales Inc., we have a wide variety of yachts available on our sale's list. We also work in close contact with all the big yacht manufacturers from all over the world.

If you would like to buy a yacht **Silverlining — CUSTOM YACHT** or would like help answering any questions concerning purchasing, selling or chartering a yacht, please call **+1(954)274-4435**

TABLE OF CONTENTS

| | |
|------------------------------|----|
| TABLE OF CONTENTS | 2 |
| SPECIFICATIONS | 4 |
| Overview | 4 |
| Basic Information | 4 |
| Dimensions | 4 |
| Speed, Capacities and Weight | 4 |
| Accommodations | 5 |
| Hull and Deck Information | 5 |
| Engine Information | 5 |
| DETAILED INFORMATION | 6 |
| Highlights | 6 |
| General Description | 6 |
| Exterior | 6 |
| Exterior features | 6 |
| Interior | 6 |
| Interior features | 6 |
| Sail equipment | 7 |
| Electrical Equipment | 7 |
| Electronics and Navigation | 7 |
| Mechanical and Engine room | 8 |
| Galley and Laundry | 8 |
| Tenders and Toys | 9 |
| Entertainment | 9 |
| Safety | 9 |
| Exclusions | 9 |
| Disclaimer | 9 |
| PHOTOS | 10 |
| CONTACTS | 14 |

| | |
|-----------------|----|
| Contact details | 14 |
| Telephones | 14 |
| Office hours | 14 |
| Address | 14 |

SPECIFICATIONS

Overview

Designed by Sparkman & Stephens and build at the Pithak Shipyard in Thailand this aluminium sloop rigged yacht was launched in 2011. Since then she has been doing over 50,000 NM visiting 40+ countries mostly with a family with 2 young kids and captain / crew. Proven safe, reliable and strong passage maker.

Basic Information

Category: Sloop

Sub Category: Cruising Sailboat

Model Year: 2011

Year Built: 2011

Country: Thailand

Vessel Top: Hardtop

Dimensions

LOA: 104' 0" (31.70m)

Beam: 23' 7" (7.19m)

Min Draft: 11' 5" (3.48m)

Speed, Capacities and Weight

Cruise Speed: 10 Kts. (12 MPH)

Cruise Speed Range: 2500

Max Speed: 12 Kts. (14 MPH)

Water Capacity: 1320.86026 Gallons

Fuel Capacity: 2245.462442 Gallons

Fuel Consumption: 6.6043013 Gallons

Accommodations

Total Cabins: 4

Total Berths: 8

Sleeps: 8

Total Heads: 3

Captain Cabin: True

Crew Cabin: 3

Crew Berths: 5

Crew Sleeps: 5

Crew Heads: 2

Hull and Deck Information

Hull Material: Aluminum

Deck Material: Teak over Aluminum

Hull Configuration: Bilge Keel

Hull Color: Grey

Hull Designer: Sparkman & Stephens

Exterior Designer: Sparkman & Stephens

Engine Information

Engines: 1

Manufacturer: Caterpillar

Model: C12

Engine Type: Inboard

Fuel Type: Diesel

DETAILED INFORMATION

Highlights

1. Superb passage making 104' aluminium sailing yacht launched 2011 2. Sparkman & Stephens design gives sleek speedy look 3. Proven world sailor fully equipped for ocean crossings 4. Top brand equipment delivers faultless operations 5. Offers accommodation for 8 with 5 crew 6. At cruising speed (10 kts), range on engine is 2,500 NM 7. Build with supervision of owner and captain

General Description

Designed by Sparkman & Stephens and build at the Pithak Shipyard in Thailand this aluminium sloop rigged yacht was launched in 2011. Since then she has been doing over 50,000 NM visiting 40+ countries mostly with a family with 2 young kids and captain / crew. Proven safe, reliable and strong passage maker.

Exterior

This sleek aluminium yacht has a teak-laid deck, a raised inside salon and a lower deck.

Exterior features

Large aft cockpit with twin raised helms, bar area in cockpit and L-shaped settee and dining table for 8. Inside the raised saloon another dining table for 8 with inside helm station and wine bar area.

Interior

Contemporary design with many solid teak trimmings and ornaments.

Interior features

Raised salon with dining table for 8, with inside helm station and wine bar area. Lower deck: Lower saloon with L-shaped couch, high fi cabinet and beverage centre with two lazy boy style chairs to port. Galley and crew mess forward of salon. Forward of galley is the captain's cabin with en-suite on port side and laundry area on starboard, forward of this are two crew cabins each with two bunks. Forward of this is a shared bathroom area. Access to the forepeak locker is possible from deck beyond the crew baths. The aux engine room and main engine room are

either accessed from deck or from an internal access besides the laundry area. Aft of the lower saloon is the day toilet and head with shower mid ships. To port are two guest cabins, one with twin bunks and another with a double bed. To starboard is the main guest suite with a queen sized bed and en-suite with toilet, sink and shower. Owners cabin is aft and full beam with a queen size bed mid ships, his and her decks and twin sinks with glass feature shower and solid teak bath. Aft of this the garage either accessed from the garage door or deck hatches.

Sail equipment

Max Spar carbon mast, swept back with carbon dinghy lifting pole; In boom furling carbon boom by Martin; Rod rigging by Bas; Dual forestays with hydraulic furling by Harken; Inner forestay with manual Harken furling; Running back stays, single backstay to v split on aft deck; Full battened main sail Doyle made in 2011; 145% genoa made by Doyle in 2011; 95% genoa made by Doyle in 2011; Staysail with reefing point to storm sail made by Doyle 2011; All running rigging Dyneema, new 2011 All deck hardware by Harken Primary winches Harken 1120's three speed hydraulic Secondary winches Harken 1000's three speed hydraulic Mast 2 units Harken 980, 2 speed hydraulic Mast one unit Harken 980 2 speed manual Main sheet and main halyard on captive winches by Harken Hydraulic tensioners for headsails, hydraulic boom vang by Harken

Complete hydraulic solution was designed and built by Harken including plc control system and full cabling. Main hydraulic tank of 600 Liter with 2 each 15 hp DC pumps for general usage and PTO on both generators for extra power for thrusting ect. Two touch screen control panels and two sail panels on both helms. All hydraulic piping for supply and return made with 316 piping . All valves have manual override handles for manual operation.

Electrical Equipment

Vessel is wired 380 volt three phase with shore power and generator isolators, on board powers are 380V, 220V, 24V and some 12 Volt electronics.

Vessel has dual 38 kw generators at 380 volt and 4 Victron inverter/chargers each with 3KW batteries are AGM lifeline total of 31 units at 255 Amp/hour each at 12 volt. Batteries in 6 separate banks with smart charging system. All electrics designed and built in the uk by merlin electrics. All panels are isolated or in DC. They are double poled. All area of vessel have their own respective local AC and DC boxes.

Plugs are 220 Volt, 50 Hertz, English plugs

Electronics and Navigation

Raymarine digital radar, AIS, 2 units VHF (Icom and Raymarine) with DSC HF radio Icom M802, mini VSAT internet and telephone, M7 SAT TV, 5 chart plotters, two on helms outside, one on

indoor helm, one in owners stateroom and one in captains cabin, ST70 plus instruments on all three helms, Raymarine autopilot with remote control, forward looking echo sounder, handheld GPS, handheld VHF radios, Kahlenberg horns, foredeck speaker/hailer.

Mechanical and Engine room

Main engine is a CAT C12 with 480 bhp, currently with 2000 hours as of January 2015. 2013 couple to ZF gear reduction with transmission. Propellor is a Hundested 1 meter in diameter 4 bladed controllable pitch unit. Electronic gear/throttle controls by Morse on both out door helms

2 units CAT C4 generators each with 38kw at 380 volts, 50 hertz. Both generators have approximately 1750 hours per unit. Each with power take offs for hydraulics

Two hot water tanks and all pumps by Gianesschi, water pumps in 24 volt, 220 volt and 380 volt with circulation pumps, fire pumps ect. All pump out pumps for black and grey water also by Gianesschi

Hydraulic steering by Hydrive Australia with dual helms, bypass valves to create rudder feedback and manual over ride for redundancy

Hydraulic bow thruster of 60 bhp and retractable stern thruster of 40 bhp both by Maxpower.

Hydraulic passerelle

Hydraulic garage door

Chilled water A/C system with reverse cycle heating, three compressors of 70,000 BTU for a total of 210,000 BTU capacity

Alfa Laval fuel polishing system

Galley and Laundry

Galley has 6 burner Viking Range with full size under counter oven both with LPG, galley has three under counter drawer fridges each with 2 drawers and a under counter Viking beverage fridge. Built-in Miele coffee maker and Miele microwave and built-in Viking under counter dishwasher, twin deep sink with Corian counter tops.

Miele washer and dryer both 2011, in counter sink with Corian counter tops and upright Miele deep freezer.

Lower salon: Viking beverage fridge

Raised salon: Viking ice maker and Viking wine fridge

Cockpit: Isotherm ice maker and beverage fridge

Tenders and Toys

Castoldi 5 meter jet drive tender with 135hp Yanmar diesel 2.9 meter RIB with two engines, either 2hp or 8 hp Inflatable kayak Snorkling gear

Entertainment

All cabins including crew have LCD TV's with Apple hard drives and DVD players. Main saloon has 55 inch TV with surround stereo, DVD player and Xbox

Audio system for raised saloon and cockpit by pioneer with 8 speakers and sub woofers

Safety

Two 8 man offshore life rafts, 2 units auto jon buoys, life sling, safety ladder, throw lines and lifting harness with grab bag etc.. Two remote control spotlights on lower spreaders., EPIRB 406 Hz, sart, flares, safety harnesses etc.

Exclusions

Owner's personal belongings.

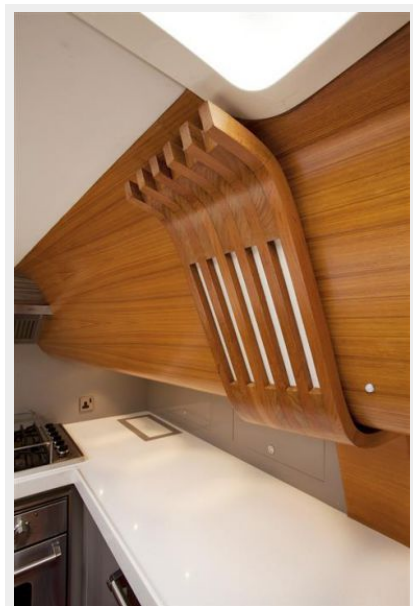
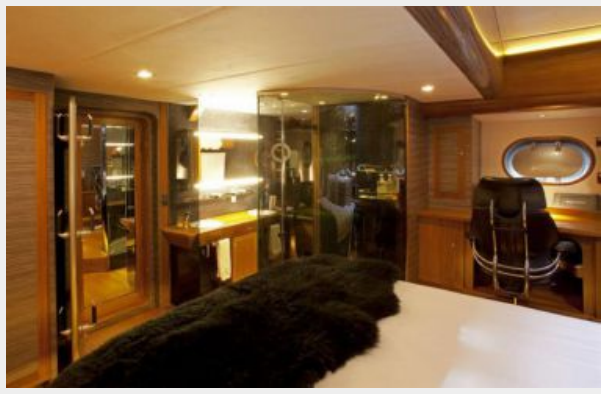
Disclaimer

The Company offers the details of this vessel or yacht in good faith but cannot guarantee or warrant the accuracy of this information nor warrant the condition of the vessel. A buyer should instruct his representatives, agents, or his surveyors, to investigate such details as the buyer desires validated. This vessel or yacht is offered subject to prior sale, price change, or withdrawal without notice.

PHOTOS









CONTACTS

Andrey Shestakov, leading yacht broker of the sales department of Shestakov Yacht Sales Inc. Shestakov Yacht Sales Inc., the official representative of the Miami/Fort Lauderdale FL headquarters.

Contact details

Email: andrey@shestakovyachtsales.com

Web: shestakovyachtsales.com/en/

Telephones

USA: +1(954)274-4435

Office hours

Monday – Saturday: **9:00 - 21:00** EDT

Sunday: **closed**

Address



Harbour Towne Marina, 850 NE 3rd St,
STE 213, Dania, FL 33004