

## SILVERLINING — CUSTOM YACHT



**Судостроитель:** CUSTOM YACHT

**Год постройки:** 2011

**Модель:** Sloop

**Цена:** ЦЕНА ЯХТЫ ПО ЗАПРОСУ

**Местонахождение:** Thailand

**Длина общая:** 104' 0" (31.70m)

**Ширина:** 23' 7" (7.19m)

**Мин. осадка:** 11' 5" (3.48m)

**Крейс. скорость:** 10 Kts. (12 MPH)

**Макс. скорость:** 12 Kts. (14 MPH)

Купить Silverlining — CUSTOM YACHT а также выбрать подходящую вам яхту из нашего каталога яхт вам поможет опытный яхтенный брокер Андрей Шестаков. На сегодняшний день компания Shestakov Yacht Sales Inc. имеет большое количество яхт в собственном списке продаж, а также тесно сотрудничает со всеми крупными яхтенными производителями по всему миру.

Для того чтобы купить яхту Silverlining — CUSTOM YACHT а также проконсультироваться по любому вопросу связанному с покупкой, продажей, чартером яхт позвоните по телефону **+7(918)465-66-44**.

# ОГЛАВЛЕНИЕ

---

ОГЛАВЛЕНИЕ	2
ХАРАКТЕРИСТИКИ	4
Обзор	4
Основная информация	4
Размеры	4
Скорость, вместимость и масса	4
Размещение	5
Корпус и палуба	5
Информация о двигателе	5
ПОДРОБНОЕ ОПИСАНИЕ	6
Highlights	6
General Description	6
Exterior	6
Exterior features	6
Interior	6
Interior features	6
Sail equipment	7
Electrical Equipment	7
Electronics and Navigation	7
Mechanical and Engine room	8
Galley and Laundry	8
Tenders and Toys	9
Entertainment	9
Safety	9
Исключения	9
Отказ от ответственности	9
ФОТОГРАФИИ	10
КОНТАКТЫ	14

---

Контактная информация	14
Телефоны	14
Время работы	14
Адрес	14

---

# ХАРАКТЕРИСТИКИ

## Обзор

Designed by Sparkman & Stephens and build at the Pithak Shipyard in Thailand this aluminium sloop rigged yacht was launched in 2011. Since then she has been doing over 50,000 NM visiting 40+ countries mostly with a family with 2 young kids and captain / crew. Proven safe, reliable and strong passage maker.

## Основная информация

**Тип судна:** Sloop

**Подкатегория:** Крейсерская яхта

**Модельный год:** 2011

**Год постройки:** 2011

**Страна:** Thailand

**Верх:** Hardtop

## Размеры

**Длина общая:** 104' 0" (31.70m)

**Ширина:** 23' 7" (7.19m)

**Мин. осадка:** 11' 5" (3.48m)

## Скорость, вместимость и масса

**Крейс. скорость:** 10 Kts. (12 MPH)

**Дальность на крейсерской скорости:**  
2500

**Макс. скорость:** 12 Kts. (14 MPH)

**Вместимость воды:** 1320.86026 Gallons

**Объем топливного бака:** 2245.462442  
Gallons

**Расход топлива:** 6.6043013 Gallons

## Размещение

---

Всего кают: 4

Всего коек: 8

Спальные места: 8

Всего ком. состава: 3

Каюта капитана: Да

Каюты экипажа: 3

Койки экипажа: 5

Спальных мест экипажа: 5

Комм. состав экипажа: 2

## Корпус и палуба

---

Материал корпуса: Aluminum

Материал палубы: Teak over Aluminum

Комплектация корпуса: Bilge Keel

Цвет корпуса: Grey

Дизайнер корпуса: Sparkman & Stephens  
Дизайнер экстерьера: Sparkman & Stephens

## Информация о двигателе

---

Двигатели: 1

Производитель: Caterpillar

Модель: C12

Тип двигателя: Inboard

Тип топлива: Diesel

---

# ПОДРОБНОЕ ОПИСАНИЕ

---

## Highlights

---

1. Superb passage making 104' aluminium sailing yacht launched 2011 2. Sparkman & Stephens design gives sleek speedy look 3. Proven world sailor fully equipped for ocean crossings 4. Top brand equipment delivers faultless operations 5. Offers accommodation for 8 with 5 crew 6. At cruising speed (10 kts), range on engine is 2,500 NM 7. Build with supervision of owner and captain

## General Description

---

Designed by Sparkman & Stephens and build at the Pithak Shipyard in Thailand this aluminium sloop rigged yacht was launched in 2011. Since then she has been doing over 50,000 NM visiting 40+ countries mostly with a family with 2 young kids and captain / crew. Proven safe, reliable and strong passage maker.

## Exterior

---

This sleek aluminium yacht has a teak-laid deck, a raised inside salon and a lower deck.

## Exterior features

---

Large aft cockpit with twin raised helms, bar area in cockpit and L-shaped settee and dining table for 8. Inside the raised saloon another dining table for 8 with inside helm station and wine bar area.

## Interior

---

Contemporary design with many solid teak trimmings and ornaments.

## Interior features

---

Raised salon with dining table for 8, with inside helm station and wine bar area. Lower deck: Lower saloon with L-shaped couch, high fi cabinet and beverage centre with two lazy boy style chairs to port. Galley and crew mess forward of salon. Forward of galley is the captain's cabin with en-suite on port side and laundry area on starboard, forward of this are two crew cabins each with two bunks. Forward of this is a shared bathroom area. Access to the forepeak locker is possible from deck beyond the crew baths. The aux engine room and main engine room are

either accessed from deck or from an internal access besides the laundry area. Aft of the lower saloon is the day toilet and head with shower mid ships. To port are two guest cabins, one with twin bunks and another with a double bed. To starboard is the main guest suite with a queen sized bed and en-suite with toilet, sink and shower. Owners cabin is aft and full beam with a queen size bed mid ships, his and her decks and twin sinks with glass feature shower and solid teak bath. Aft of this the garage either accessed from the garage door or deck hatches.

## Sail equipment

---

Max Spar carbon mast, swept back with carbon dinghy lifting pole; In boom furling carbon boom by Martin; Rod rigging by Bas; Dual forestays with hydraulic furling by Harken; Inner forestay with manual Harken furling; Running back stays, single backstay to v split on aft deck; Full battened main sail Doyle made in 2011; 145% genoa made by Doyle in 2011; 95% genoa made by Doyle in 2011; Staysail with reefing point to storm sail made by Doyle 2011; All running rigging Dyneema, new 2011 All deck hardware by Harken Primary winches Harken 1120's three speed hydraulic Secondary winches Harken 1000's three speed hydraulic Mast 2 units Harken 980, 2 speed hydraulic Mast one unit Harken 980 2 speed manual Main sheet and main halyard on captive winches by Harken Hydraulic tensioners for headsails, hydraulic boom vang by Harken

Complete hydraulic solution was designed and built by Harken including plc control system and full cabling. Main hydraulic tank of 600 Liter with 2 each 15 hp DC pumps for general usage and PTO on both generators for extra power for thrusting ect. Two touch screen control panels and two sail panels on both helms. All hydraulic piping for supply and return made with 316 piping . All valves have manual override handles for manual operation.

## Electrical Equipment

---

Vessel is wired 380 volt three phase with shore power and generator isolators, on board powers are 380V, 220V, 24V and some 12 Volt electronics.

Vessel has dual 38 kw generators at 380 volt and 4 Victron inverter/chargers each with 3KW batteries are AGM lifeline total of 31 units at 255 Amp/hour each at 12 volt. Batteries in 6 separate banks with smart charging system. All electrics designed and built in the uk by merlin electrics. All panels are isolated or in DC. They are double poled. All area of vessel have their own respective local AC and DC boxes.

Plugs are 220 Volt, 50 Hertz, English plugs

## Electronics and Navigation

---

Raymarine digital radar, AIS, 2 units VHF (Icom and Raymarine) with DSC HF radio Icom M802, mini VSAT internet and telephone, M7 SAT TV, 5 chart plotters, two on helms outside, one on

indoor helm, one in owners stateroom and one in captains cabin, ST70 plus instruments on all three helms, Raymarine autopilot with remote control, forward looking echo sounder, handheld GPS, handheld VHF radios, Kahlenberg horns, foredeck speaker/hailer.

## Mechanical and Engine room

---

Main engine is a CAT C12 with 480 bhp, currently with 2000 hours as of January 2015. 2013 couple to ZF gear reduction with transmission. Propellor is a Hundested 1 meter in diameter 4 bladed controllable pitch unit. Electronic gear/throttle controls by Morse on both out door helms

2 units CAT C4 generators each with 38kw at 380 volts, 50 hertz. Both generators have approximately 1750 hours per unit. Each with power take offs for hydraulics

Two hot water tanks and all pumps by Gianesschi, water pumps in 24 volt, 220 volt and 380 volt with circulation pumps, fire pumps ect. All pump out pumps for black and grey water also by Gianesschi

Hydraulic steering by Hydrive Australia with dual helms, bypass valves to create rudder feedback and manual over ride for redundancy

Hydraulic bow thruster of 60 bhp and retractable stern thruster of 40 bhp both by Maxpower.

Hydraulic passerelle

Hydraulic garage door

Chilled water A/C system with reverse cycle heating, three compressors of 70,000 BTU for a total of 210,000 BTU capacity

Alfa Laval fuel polishing system

## Galley and Laundry

---

Galley has 6 burner Viking Range with full size under counter oven both with LPG, galley has three under counter drawer fridges each with 2 drawers and a under counter Viking beverage fridge. Built-in Miele coffee maker and Miele microwave and built-in Viking under counter dishwasher, twin deep sink with Corian counter tops.

Miele washer and dryer both 2011, in counter sink with Corian counter tops and upright Miele deep freezer.

Lower salon: Viking beverage fridge

Raised salon: Viking ice maker and Viking wine fridge



Cockpit: Isotherm ice maker and beverage fridge

---

## Tenders and Toys

---

Castoldi 5 meter jet drive tender with 135hp Yanmar diesel 2.9 meter RIB with two engines, either 2hp or 8 hp Inflatable kayak Snorkling gear

---

## Entertainment

---

All cabins including crew have LCD TV's with Apple hard drives and DVD players. Main saloon has 55 inch TV with surround stereo, DVD player and Xbox

Audio system for raised saloon and cockpit by pioneer with 8 speakers and sub woofers

---

## Safety

---

Two 8 man offshore life rafts, 2 units auto jon buoys, life sling, safety ladder, throw lines and lifting harness with grab bag etc.. Two remote control spotlights on lower spreaders., EPIRB 406 Hz, sart, flares, safety harnesses etc.

---

## Исключения

---

При продаже яхты исключаются личные вещи владельца.

---

## Отказ от ответственности

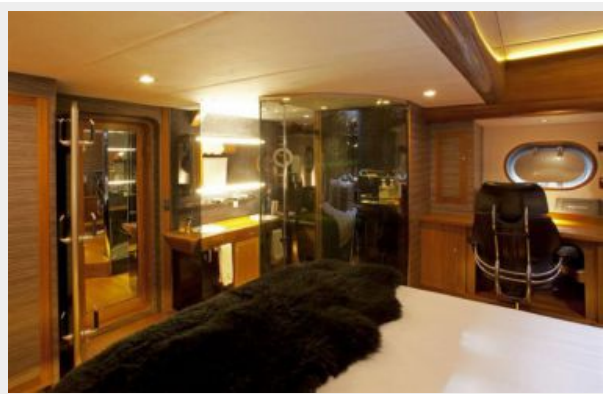
---

Компания предоставляет описание судна или яхты добросовестно, но не может гарантировать точность этой информации, а также не ручается за техническое состояние. Покупатель должен проинструктировать своих агентов или оценщиков исследовать представленную информацию более подробно, по собственному желанию. Продажа судна или яхты, изменение цены или снятие с продажи будет происходить без предварительного уведомления.

# ФОТОГРАФИИ









# КОНТАКТЫ

---

Андрей Шестаков (Andrey Shestakov) – ведущий яхтенный брокер отдела продаж яхт и судов компании Shestakov Yacht Sales Inc. Официальный представитель Shestakov Yacht Sales Inc. для русскоговорящих клиентов в центральном офисе компании в Майами/Форт Лодердейл/Флорида/США.

## Контактная информация

---

Email: [andrey@shestakovyachtsales.com](mailto:andrey@shestakovyachtsales.com)

Web: [shestakovyachtsales.com](http://shestakovyachtsales.com)

## Телефоны

---

Краснодарский край: **+7(918)465-66-44**

США, Майами, Флорида: **+1(954)274-4435**

## Время работы

---

Понедельник – Суббота: **9:00 - 21:00**  
EDT

Воскресенье: **Закрето**

## Адрес

---



Harbour Towne Marina, 850 NE 3rd St,  
STE 213, Dania, FL 33004