

CHESAPEAKE — GULFSTAR



Builder: GULFSTAR

Year Built: 1973

Model: Motorsailer

Price: PRICE ON APPLICATION

Location: United States

LOA: 53' 0" (16.15m)

Beam: 15' 10" (4.83m)

Max Draft: 4' 10" (1.47m)

Our experienced yacht broker, Andrey Shestakov, will help you choose and buy a yacht that best suits your needs **Chesapeake — GULFSTAR** from our catalogue. Presently, at Shestakov Yacht Sales Inc., we have a wide variety of yachts available on our sale's list. We also work in close contact with all the big yacht manufacturers from all over the world.

If you would like to buy a yacht **Chesapeake — GULFSTAR** or would like help answering any questions concerning purchasing, selling or chartering a yacht, please call **+1(954)274-4435**

TABLE OF CONTENTS

TABLE OF CONTENTS	2
SPECIFICATIONS	4
Overview	4
Basic Information	4
Dimensions	4
Speed, Capacities and Weight	4
Accommodations	4
Hull and Deck Information	4
Engine Information	5
DETAILED INFORMATION	6
Tanks	6
Vessel Walkthrough	6
Galley	6
Chart Table	7
Deck and Hull	7
Rigging & Sails	7
Electrical System	8
Mechanical Equipment & Engine Details	8
Auxiliary Equipment	8
Disclaimer	8
Exclusions	8
Disclaimer	8
PHOTOS	10
CONTACTS	14
Contact details	14
Telephones	14
Office hours	14
Address	14

SPECIFICATIONS

Overview

Chesapeake is a project boat. Both the interior and exterior need TLC. She was donated to a private college and seems to run well. This boat is priced WAY below market and is a true value for someone who wishes to fix her up! If you desire the opportunity to own a 53' Classic Sailboat at a bargain price, Hurry! She is the only one on the market!

Basic Information

Category: Motorsailor

Model Year: 1973

Year Built: 1973

Country: United States

Dimensions

LOA: 53' 0" (16.15m)

Beam: 15' 10" (4.83m)

Max Draft: 4' 10" (1.47m)

Speed, Capacities and Weight

Displacement: 44000 Pounds

Water Capacity: 270 Gallons

Fuel Capacity: 350 Gallons

Accommodations

Total Cabins: 3

Total Heads: 1

Hull and Deck Information

Hull Material: Fiberglass

Engine Information

Engines: 1

Manufacturer: Perkins

Model: 6.354

Engine Type: Inboard

Fuel Type: Diesel

DETAILED INFORMATION

Tanks

Fresh Water 270 gallons

Fuel Tank 350 gallons

Vessel Walkthrough

Master Stateroom:

- Double Beds
- Drawers
- Cedar Closets
- Head
- Separate Walk In Shower
- Built in Chest of Drawers
- Marine Air Unit

Forward Stateroom

- Cabin with Berths for 4
- V-Berth Chest of Drawers
- Hanging Locker

Stateroom

- Over & Under Berths w/ Chest of Drawers
- Large Hanging Locker
- Marine Air Unit

Head

- Stall Shower

Galley

- 8 Cu. Ft Ref/Freezer w/ 2 Holding Plates
- 11 Gallon Hot Water Heater
- Safe-T Alert Carbon Monoxide Alarm
- Smoke Detector
- Trident LP Gas Controlled Detection System

- 2 40# Lpg Aluminum Tanks In-Deck Propane Vented
- Seaward 'Gourmet' 3 Burner Stove w/ Oven
- Stainless Steel Vent

Chart Table

- Lighted Compass in Binnacle
- Mast Horn
- Loudhailer Speaker
- Radar: Furuno Model 2000
- ICOM VHF M127

Deck and Hull

- Center Cockpit
- Fenders & Dock Lines
- 1 Anchor; Bruce
- Dual Bow Anchor Davits
- Side Stanchions w/ Life Lines
- Fiberglass Deck
- Barlow Windlass w/ Bow Hand Controller
- NAV Light
- Bow & Starboard Flood Lights
- Four Spreader Lights Mast HEad Anchor Light
- Trinidad Sr Antifouling

Rigging & Sails

- Ketch Rigged
- Aluminum Mast & Booms
- pace-Edwards Mast Steps
- Harken 48# Halyard Winch on Main
- Mast, Tapered Aluminum Spreaders
- Profurl Roller Reefing Gear Nc42
- Stainless Steel Rigging
- Adjustable Topping Lift
- Spinnaker Pole Track
- Main Boom Traveler Arch
- Two Primary Lewmar 3 Spd "55" Sheet Winches, Two Secondary
- Two Mizzen Barlow 20's #40 Winches, Five Winch Handles
- All Sails are Dacron

- Full Batten 130 Dacron Genoa

Electrical System

- 2007 Westerbeke 9.5kw Marine Generator w/ 105hrs
- 2 Engine and Genset Starting
- Anchor Windlass Group 31 Forward in Vee Berth
- 2 Battery Chargers

Mechanical Equipment & Engine Details

- Cruise Air
- Pedestal Hydraulic Steering Station
- Four Blade Maxi- Prop
- Racor Diesel Filter

Auxiliary Equipment

Aluminum Davits

Disclaimer

While we attempt to display current and accurate data, this listing may not reflect the most recent transactions or may contain occasional data entry errors. Selling agent makes no warranties, express or implied, regarding the content or availability of the products described herein. All inventory listed is subject to availability and prior sale. Please consult selling agent for details. Prices are quoted for the USA only and may not include transportation, taxes, or other applicable charges. Photographs may be representative only and may vary somewhat from the actual items offered for sale. We will not be responsible for inaccurate data obtained from our site. Please check with your local dealer to ensure that you have the latest information available. Information on this web site could include technical inaccuracies or typographical errors. Changes may be periodically made to the information or the products herein. Questions or comments regarding these policies may be directed to website hosting agent.

Exclusions

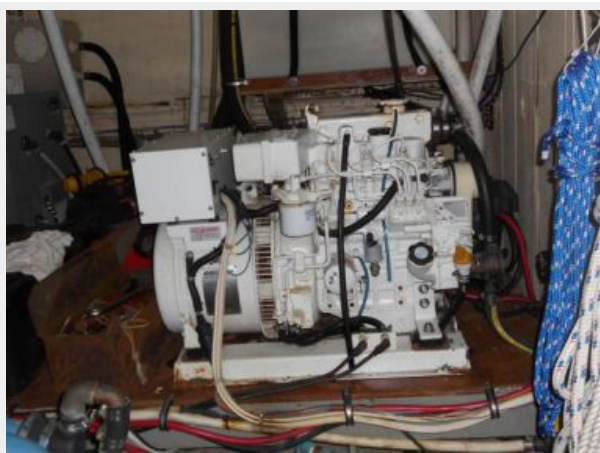
Owner's personal belongings.

Disclaimer

The Company offers the details of this vessel or yacht in good faith but cannot guarantee or warrant the accuracy of this information nor warrant the condition of the vessel. A buyer should instruct his representatives, agents, or his surveyors, to investigate such details as the buyer desires validated. This vessel or yacht is offered subject to prior sale, price change, or withdrawal without notice.

PHOTOS









CONTACTS

Andrey Shestakov, leading yacht broker of the sales department of Shestakov Yacht Sales Inc. Shestakov Yacht Sales Inc., the official representative of the Miami/Fort Lauderdale FL headquarters.

Contact details

Email: andrey@shestakovyachtsales.com

Web: shestakovyachtsales.com/en/

Telephones

USA: +1(954)274-4435

Office hours

Monday – Saturday: **9:00 - 21:00** EDT

Sunday: **closed**

Address



Harbour Towne Marina, 850 NE 3rd St,
STE 213, Dania, FL 33004