

NO NAME — SUNSEEKER



Builder: SUNSEEKER

Year Built: 2011

Model: Cruiser

Price: PRICE ON APPLICATION

Location: United States

LOA: 63' 0" (19.20m)

Beam: 16' 0" (4.88m)

Max Draft: 5' 0" (1.52m)

Cruise Speed: 24 Kts. (28 MPH)

Our experienced yacht broker, Andrey Shestakov, will help you choose and buy a yacht that best suits your needs **NO NAME — SUNSEEKER** from our catalogue. Presently, at Shestakov Yacht Sales Inc., we have a wide variety of yachts available on our sale's list. We also work in close contact with all the big yacht manufacturers from all over the world.

If you would like to buy a yacht **NO NAME — SUNSEEKER** or would like help answering any questions concerning purchasing, selling or chartering a yacht, please call **+1(954)274-4435**

TABLE OF CONTENTS

| | |
|------------------------------|----|
| TABLE OF CONTENTS | 2 |
| SPECIFICATIONS | 3 |
| Overview | 3 |
| Basic Information | 3 |
| Dimensions | 3 |
| Speed, Capacities and Weight | 3 |
| Accommodations | 3 |
| Hull and Deck Information | 4 |
| Engine Information | 4 |
| DETAILED INFORMATION | 5 |
| Accommodations | 5 |
| Description per area Layout | 5 |
| Electronic | 5 |
| Exclusions | 5 |
| Disclaimer | 5 |
| PHOTOS | 7 |
| CONTACTS | 15 |
| Contact details | 15 |
| Telephones | 15 |
| Office hours | 15 |
| Address | 15 |

SPECIFICATIONS

Overview

The Manhattan 63 is a perfect example of a boat that packs innovation, luxury and performance into an exceptionally graceful frame. The hull form has been designed to take a more traditional shaft option but now includes the option of IPS drives - the latter produces fantastic results in performance, handling and economy. Interior options offer upper deck or lower deck galley, three or four staterooms with a midships full-beam master and very large hull-side windows. Saloon and entertainment space has been increased and enlarged and panoramic superstructure windows ensure a feeling of openness.

Basic Information

Category: Cruiser

Model Year: 2011

Year Built: 2011

Country: United States

Fly Bridge: Yes

Cockpit: Yes

Dimensions

LOA: 63' 0" (19.20m)

Beam: 16' 0" (4.88m)

Max Draft: 5' 0" (1.52m)

MFG Length: 63' 0" (19.20m)

Speed, Capacities and Weight

Cruise Speed: 24 Kts. (28 MPH)

Max Speed Range: 28 Kts.

Accommodations

Total Cabins: 4

Total Berths: 6

Sleeps: 8

Total Heads: 4

Crew Cabin: 1

Hull and Deck Information

Hull Material: Fiberglass

Hull Configuration: Deep Vee

Engine Information

Engines: 2

Manufacturer: MAN

Model: MAN 1020 HP

Engine Type: Inboard

Fuel Type: Diesel

DETAILED INFORMATION

Accommodations

- 4 Cabins
- 4 Bathrooms

Description per area Layout

- Queen berth- Master Cabin
- Queen berth- VIP Cabin
- 2 Twin berths with drawer storage- Starboard Guest Cabin
- Over/Under berths- Port Guest Cabin
- Crew Cabin
- Teak table on Flybridge
- Teak decking
- Flybridge grill
- Swim Platform elevator
- Bowthruster Dual Side Power

Electronic

- Kohler generator
- 4 Samsung flat screen TVs
- Raymarine GPS
- Raymarine Autopilot
- Raymarine ST60 Depth Finder
- Raymarine Ray240 VHF
- Bose stereo system

Exclusions

Owner's personal belongings.

Disclaimer

The Company offers the details of this vessel or yacht in good faith but cannot guarantee or warrant the accuracy of this information nor warrant the condition of the vessel. A buyer should instruct his representatives, agents, or his surveyors, to investigate such details as the buyer desires validated. This vessel or yacht is offered subject to prior sale, price change, or withdrawal

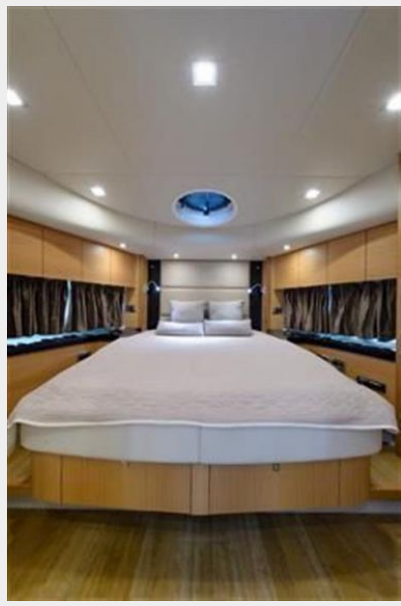
without notice.

PHOTOS

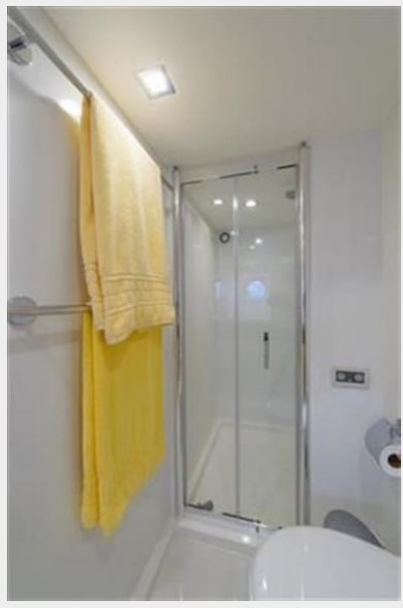
















CONTACTS

Andrey Shestakov, leading yacht broker of the sales department of Shestakov Yacht Sales Inc. Shestakov Yacht Sales Inc., the official representative of the Miami/Fort Lauderdale FL headquarters.

Contact details

Email: andrey@shestakovyachtsales.com

Web: shestakovyachtsales.com/en/

Telephones

USA: +1(954)274-4435

Office hours

Monday – Saturday: **9:00 - 21:00** EDT

Sunday: **closed**

Address



Harbour Towne Marina, 850 NE 3rd St,
STE 213, Dania, FL 33004