

MERIWEATHER — PRESIDENT YACHTS



Builder: PRESIDENT YACHTS

Year Built: 1986

Model: Motor Yacht

Price: PRICE ON APPLICATION

Location: United States

LOA: 43' 0" (13.11m)

Beam: 13' 6" (4.11m)

Min Draft: 3' 5" (1.04m)

Max Draft: 3' 5" (1.04m)

Cruise Speed: 8 Kts. (9 MPH)

Max Speed: 15 Kts. (17 MPH)

Our experienced yacht broker, Andrey Shestakov, will help you choose and buy a yacht that best suits your needs Meriweather — PRESIDENT YACHTS from our catalogue. Presently, at Shestakov Yacht Sales Inc., we have a wide variety of yachts available on our sale's list. We also work in close contact with all the big yacht manufacturers from all over the world.

If you would like to buy a yacht Meriweather — PRESIDENT YACHTS or would like help answering any questions concerning purchasing, selling or chartering a yacht, please call +1(954)274-4435

TABLE OF CONTENTS

TABLE OF CONTENTS	2
SPECIFICATIONS	6
Overview	6
Basic Information	6
Dimensions	6
Speed, Capacities and Weight	6
Accommodations	7
Hull and Deck Information	7
Engine Information	7
DETAILED INFORMATION	8
43' President Overview	8
43' President Vessel Walkthrough	8
43' President Accommodations	8
43' President Salon	8
43' President Galley	8
43' President Dining	9
43' President Master Stateroom	9
43' President Guest Stateroom	9
43' President Laundry	9
43' President Flybridge	9
43' President Sundeck	10
43' President Audio/Visual Equipment	10
43' President Electronics	10
43' President Electrical System	10
43' President Engine/Mechanical Equipment	11
43' President Deck Equipment	12
43' President Safety and Fire Protection	12
43' President Exclusions	13

43' President Disclaimer	13
Exclusions	13
Disclaimer	13
PHOTOS	14
43' President starboard profile photo2	14
43' President starboard forward profile	14
43' President anchor windlass	14
43' President port forward profile	14
43' President foredeck aft	15
43' President foredeck	15
43' President port side deck photo1	15
43' President port side deck photo2	15
43' President starboard side deck photo1	16
43' President starboard side deck photo2	16
43' President flybridge forward	16
43' President flybridge aft	16
43' President flybridge port	16
43' President flybridge starboard	16
43' President flybridge helmseat	17
43' President flybridge helm	17
43' President flybridge port seating	17
43' President flybridge starboard seating	17
43' President hinged arch	17
43' President sundeck	17
43' President sundeck port	18
43' President sundeck starboard	18
43' President sundeck forward	18
43' President swim platform	18
43' President salon forward	18

43' President salon aft	18
43' President salon port	19
43' President salon port forward	19
43' President lower helm photo1	19
43' President salon starboard	19
43' President lower helm photo2	19
43' President galley photo1	19
43' President galley photo3	20
43' President galley photo2	20
43' President dinette	20
43' President master stateroom	20
43' President master stateroom aft	20
43' President master stateroom port	20
43' President master stateroom starboard seating	21
43' President master stateroom starboard	21
43' President master stateroom head	21
43' President master stateroom shower	21
43' President guest stateroom	22
43' President guest stateroom port	22
43' President guest head	22
43' President guest stateroom starboard	22
43' President washer/dryer	23
43' President engine room	23
43' President engine room forward	23
43' President port main engine	23
43' President port Racor fuel filter	24
43' President starboard main engine	24
43' President starboard Racor fuel filter	24
43' President fuel polishing system	24

43' President oil change system	25
43' President water heater	25
43' President tank level gauge	25
43' President engine room camera	25
43' President electrical panel	26
43' President generator	26
43' President battery charger	26
43' President inverter	26
CONTACTS	27
Contact details	27
Telephones	27
Office hours	27
Address	27

SPECIFICATIONS

Overview

Meriweather is a well-maintained and upgraded 43' President sundeck motoryacht. She offers twin Ford Lehman 275 hp main engines, 6 kw Westerbeke generator, full beam master stateroom aft with a queen size berth and a guest stateroom forward with a queen size berth. Her engineer owner has upgraded and customized her and has kept her docked under cover in fresh water. The seller transported her from the Georgia coast to Lake Hartwell and is willing to assist with coordination in transporting her back to the coast, if desired. Meriweather would be a terrific Great Loop boat.

Basic Information

Category: Motor Yacht

Sub Category: Aft Cabin

Model Year: 1986

Year Built: 1986

Country: United States

Vessel Top: Bimini Top

Fly Bridge: Yes

Dimensions

LOA: 43' 0" (13.11m)

Beam: 13' 6" (4.11m)

Min Draft: 3' 5" (1.04m)

Max Draft: 3' 5" (1.04m)

Speed, Capacities and Weight

Cruise Speed: 8 Kts. (9 MPH)

Max Speed: 15 Kts. (17 MPH)

Displacement: 28500 Pounds

Water Capacity: 120 Gallons

Holding Tank: 30 Gallons

Fuel Capacity: 420 Gallons

Accommodations

Total Cabins: 2

Total Berths: 2

Sleeps: 4

Total Heads: 2

Hull and Deck Information

Hull Material: Fiberglass

Hull Color: White

Engine Information

Engines: 2

Manufacturer: Ford Lehman

Model: Super 275

Engine Type: Inboard

Fuel Type: Diesel

DETAILED INFORMATION

43' President Overview

Meriweather is a well-maintained and upgraded 43' President sundeck motoryacht. She offers twin Ford Lehman 275 hp main engines, 6 kw Westerbeke generator, full beam master stateroom aft with a queen size berth and a guest stateroom forward with a queen size berth. Her engineer owner has upgraded and customized her and has kept her docked under cover in fresh water. The seller transported her from the Georgia coast to Lake Hartwell and is willing to assist with coordination in transporting her back to the coast, if desired. Meriweather would be a terrific Great Loop boat.

43' President Vessel Walkthrough

From the covered sundeck, you will enter the salon and find cabinetry starboard aft and port forward, lower helm starboard forward, icemaker and washer/dryer port forward. Access to the full beam master stateroom is aft. Step down forward and you will find the galley to port and dinette to starboard. The guest stateroom is forward. Engine room access is via salon sole hatches. There are LED lights throughout, new interior cushions, new portlights, new forward and aft stateroom windows, new rubrail, new GFI outlets.

43' President Accommodations

Meriweather offer a full beam master stateroom aft with ensuite head and enclosed shower and a guest stateroom forward with queen size berth and ensuite head.

43' President Salon

The salon is unfurnished, so it is a clean slate for a new owner to furnish it. There is storage cabinetry starboard aft and port forward, teak & holly sole and opening side and aft windows.

43' President Galley

The down galley is to port.

- GE microwave oven
- Avanti refrigerator/freezer
- Origo E200 2-burner ceramic cooktop

-
- Edgestar DWP45ES dishwasher
 - Corian countertop
 - Large stainless steel sink
 - Stainless steel backsplash
 - Portlight and window
 - Storage cabinets and drawers
 - Shelves
 - Teak & holly sole
 - U-Line icemaker in the salon
 - West Marine stainless steel BBQ grill on the sundeck

43' President Dining

Dining space is available at the dinette (new cushions) across from the galley.

43' President Master Stateroom

The full beam master stateroom aft offers a centerline queen size berth, side windows, overhead hatch, shelves, storage cabinets, hanging locker, reading lights, nighstands, benchseat starboard, teak & holly sole and an ensuite head with enclosed shower.

43' President Guest Stateroom

The forward guest stateroom offers a centerline queen size berth, overhead hatch, side windows and 2 portlights, shelves, hanging locker, storage drawers, storage under the berth, reading lights, benchseats each side, teak & holly sole and ensuite head.

43' President Laundry

- Equator EL 3600 CEE combo washer/dryer

43' President Flybridge

The flybridge offers a bimini (2013), Radar arch, non-skid deck, benchseat starboard aft, wrap-

around seating and hi/lo table to port, full helm with storage forward, helmseat and windscreen.

43' President Sundeck

The covered sundeck offers a teak deck, teak cap rail, boarding gates each side, transom gate, stainless steel & teak ladder to the swimplatform, stainless steel & teak steps to the flybridge, side decks access, deck chairs, custom made rail panels and double teak/glass doors to the salon.

43' President Audio/Visual Equipment

- Sony CDX-M501P stereo/CD player
- Kicker interior speakers
- West Marine exterior speakers

43' President Electronics

- Furuno Radar
- Uniden ES UM525 VHF on the flybridge
- Uniden VHF remote at the lower helm
- Uniden camera system monitor on the flybridge
- Ritchie Powerdamp magnetic compass
- Garmin GPSTMap 535s chart plotter
- Garmin GMI 10 NEMA 2000 display
- Standard horizon depth sounder
- Rudder angle indicator
- B&G Network autopilot on the flybridge

43' President Electrical System

- Westerbeke 6 kW generator with 2,836 hours

-
- Motorola Marine 70 amp alternators
 - Tripp-Lite 1,000 watt inverter with remote panel (2011)
 - Xantrex TrueCharge2 40 amp battery charger with remote panel (2011)
 - 2 X 8D house batteries (2012)
 - 2 X 4D main engines start batteries
 - 1 X Group 24 generator start battery
 - 12vdc outlet at the lower helm and on the flybridge
 - New digital amp and volt meters on the electrical panel
 - 2 X 30 amp shore cords
 - New ground bus bars and cables

43' President Engine/Mechanical Equipment

- Twin Ford Lehman Super 275 main engines with new exhaust injection elbows and insulation jackets
- Newage gearboxes with new oil coolers
- Teleflex engine controls
- Glendinning synchronizer
- Perko sea strainers
- Teleflex hydraulic steering system
- Racor 900FG fuel filters with vacuum gauges for each main engine
- Racor 500FG fuel polishing system filter
- Reverso oil change system
- Boat MFG trim tabs
- Marine Air Systems reverse cycle air conditioning/heating system (12,000 BTU and 16,000 units)
- Jabsco fresh water pump
- Seaward stainless steel 11 gallon water heater (2011)

-
- Sanigard holding tank vent filter
 - Maple systems tank level monitoring panel
 - Electric heads
 - Uniden engine room camera
 - 2" stainless steel shafts
 - 24" X 23" propellers
 - Clean Air Flow Systems in the engine room
 - Maintenance records

43' President Deck Equipment

- Muir anchor windlass
- Fortress FX-37 anchor
- Stainless steel rails
- Stainless steel deck hardware
- Stainless steel fender racks forward
- Stainless steel sampson post
- Non-skid deck forward and sides, teak deck aft
- Teak swimplatform
- Stainless steel & teak swim ladder
- Stainless steel & teak boarding ladder
- Rebuilt Bomar deck hatches

43' President Safety and Fire Protection

- Fireboy Halon 1301 engine room fire suppression system
- Rule bilge pumps
- Celectron bilge pump activity monitor

- Bilge high water alarm

- AFI horns

43' President Exclusions

Sellers' personal belongings

43' President Disclaimer

The Company offers the details of this vessel in good faith but cannot guarantee or warrant the accuracy of this information nor warrant the condition of the vessel. A buyer should instruct his agents, or his surveyors, to investigate such details as the buyer desires validated. This vessel is offered subject to prior sale, price change, or withdrawal without notice.

Exclusions

Owner's personal belongings.

Disclaimer

The Company offers the details of this vessel or yacht in good faith but cannot guarantee or warrant the accuracy of this information nor warrant the condition of the vessel. A buyer should instruct his representatives, agents, or his surveyors, to investigate such details as the buyer desires validated. This vessel or yacht is offered subject to prior sale, price change, or withdrawal without notice.

PHOTOS

43' President starboard profile photo2



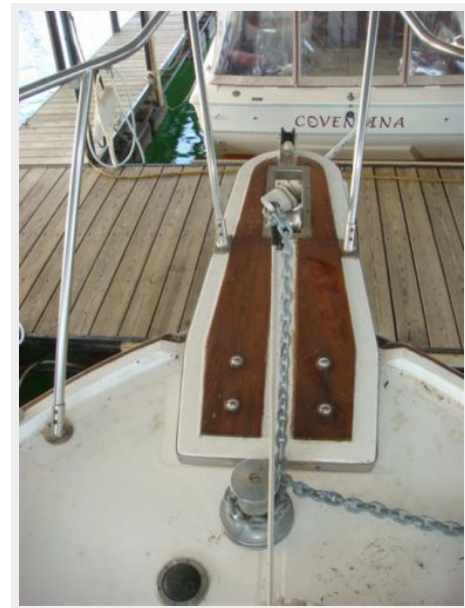
43' President starboard forward profile



43' President port forward profile



43' President anchor windlass



43' President foredeck



43' President foredeck aft



43' President port side deck photo1



43' President port side deck photo2



43' President starboard side deck photo1



43' President starboard side deck photo2



43' President flybridge forward



43' President flybridge aft



43' President flybridge port



43' President flybridge starboard



43' President flybridge helm



43' President flybridge helmseat



43' President flybridge port seating



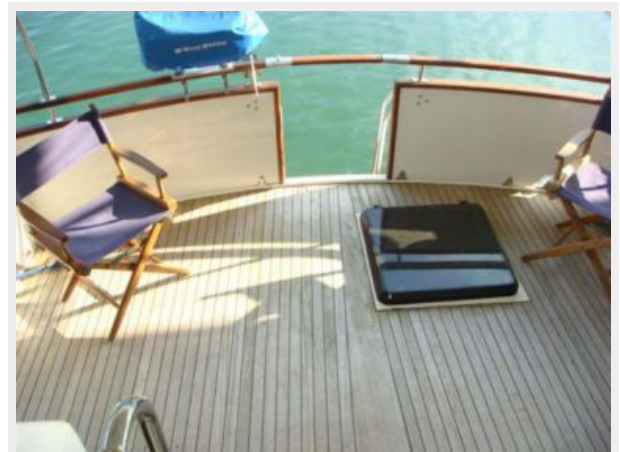
43' President flybridge starboard seating



43' President hinged arch



43' President sundeck



43' President sundeck port



43' President sundeck starboard



43' President sundeck forward



43' President swim platform



43' President salon forward



43' President salon aft



43' President salon port



43' President salon port forward



43' President salon starboard



43' President lower helm photo1



43' President lower helm photo2



43' President galley photo1



43' President galley photo2



43' President galley photo3



43' President dinette



43' President master stateroom



43' President master stateroom aft



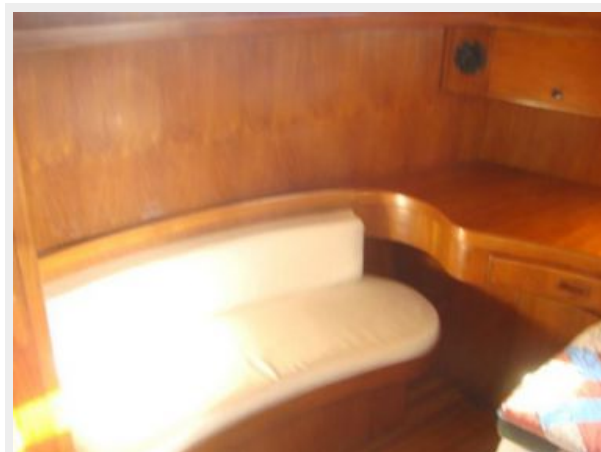
43' President master stateroom port



43' President master stateroom starboard



43' President master stateroom starboard seating



43' President master stateroom head



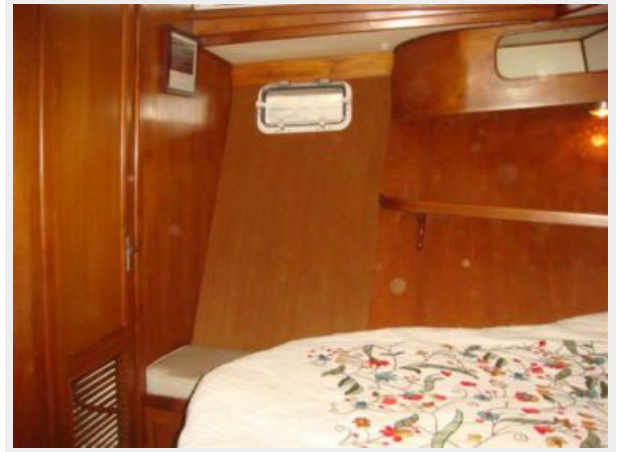
43' President master stateroom shower



43' President guest stateroom



43' President guest stateroom port



43' President guest head



43' President guest stateroom starboard



43' President washer/dryer



43' President engine room



43' President engine room forward



43' President port main engine



43' President port Racor fuel filter



43' President starboard main engine



43' President starboard Racor fuel filter



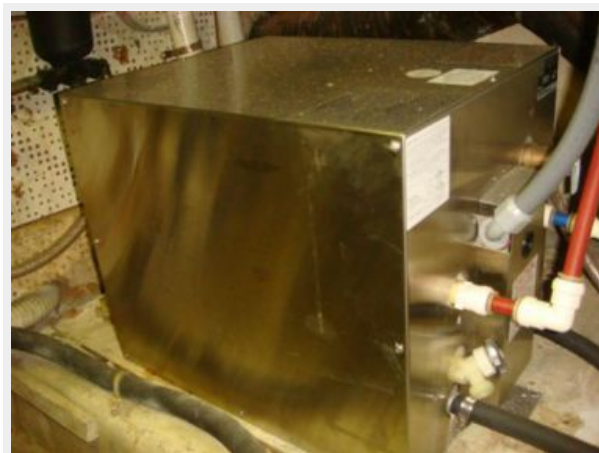
43' President fuel polishing system



43' President oil change system



43' President water heater



43' President tank level gauge



43' President engine room camera



43' President electrical panel



43' President generator



43' President battery charger



43' President inverter



CONTACTS

Andrey Shestakov, leading yacht broker of the sales department of Shestakov Yacht Sales Inc. Shestakov Yacht Sales Inc., the official representative of the Miami/Fort Lauderdale FL headquarters.

Contact details

Email: andrey@shestakovyachtsales.com

Web: shestakovyachtsales.com/en/

Telephones

USA: +1(954)274-4435

Office hours

Monday – Saturday: **9:00 - 21:00** EDT

Sunday: **closed**

Address



Harbour Towne Marina, 850 NE 3rd St,
STE 213, Dania, FL 33004