

## REEL DEAL YACHTS — FERRETTI



**Судостроитель:** FERRETTI

**Год постройки:** 2006

**Модель:** Моторная яхта

**Цена:** ЦЕНА ЯХТЫ ПО ЗАПРОСУ

**Местонахождение:** United States

**Длина общая:** 73' 0" (22.25m)

**Ширина:** 18' 0" (5.49m)

**Макс. осадка:** 5' 8" (1.73m)

Купить Reel Deal Yachts — FERRETTI а также выбрать подходящую вам яхту из нашего каталога яхт вам поможет опытный яхтенный брокер Андрей Шестаков. На сегодняшний день компания Shestakov Yacht Sales Inc. имеет большое количество яхт в собственном списке продаж, а также тесно сотрудничает со всеми крупными яхтенными производителями по всему миру.

Для того чтобы купить яхту Reel Deal Yachts — FERRETTI а также проконсультироваться по любому вопросу связанному с покупкой, продажей, чартером яхт позвоните по телефону **+7(918)465-66-44**.

# ОГЛАВЛЕНИЕ

---

ОГЛАВЛЕНИЕ	2
ХАРАКТЕРИСТИКИ	3
Обзор	3
Основная информация	3
Размеры	3
Скорость, вместимость и масса	3
Размещение	3
Корпус и палуба	3
Информация о двигателе	4
ПОДРОБНОЕ ОПИСАНИЕ	5
Features	5
Исключения	8
Отказ от ответственности	9
ФОТОГРАФИИ	10
КОНТАКТЫ	16
Контактная информация	16
Телефоны	16
Время работы	16
Адрес	16

# ХАРАКТЕРИСТИКИ

## Обзор

### MAKE ALL OFFERS

Beautiful 731 Ferretti 2006. Mitsubishi gyro stabilizers.

Easy to show at the Fontainebleau.

## Основная информация

Тип судна: Моторная яхта

Подкатегория: Flybridge

Модельный год: 2006

Год постройки: 2006

Страна: United States

Открытая палуба мостика: Да

## Размеры

Длина общая: 73' 0" (22.25m)

Ширина: 18' 0" (5.49m)

Макс. осадка: 5' 8" (1.73m)

## Скорость, вместимость и масса

Объем топливного бака: 1453 Gallons

## Размещение

Всего кают: 4

Спальных мест экипажа: 2

## Корпус и палуба

Материал корпуса: Fiberglass

---

## Информация о двигателе

---

**Двигатели:** 2

**Производитель:** MAN

**Модель:** CR

**Тип топлива:** Diesel

# ПОДРОБНОЕ ОПИСАНИЕ

## Features

### MAKE ALL OFFERS!

#### Layout

A roomy main deck incorporates a large salon with separate dining area and is elegantly equipped. The lower deck provides for four staterooms and four heads. The flybridge offers another helm station with U-shaped dining behind and sunpads forward and back.

#### Master Stateroom & Head

32" SAT TV w/ Bose system DirecTv HD receiver Bedside tables w/ cabinet Bose 321 System Chest of drawers Curtains Bed w/ mattress, pillows & bedspread Drawers (4) underneath bed Dressing table w/ stool Fixed window w/ 2 opening portholes in SS w/ roll-up Fully fitted carpets Linen closet Reading lights Ventilation under the bed Walk-in closet w/ safe deposit box **Master Head** Design washbasin in Aframosia wood & wooden countertop Electric ceramic WC w/ fresh water Fixed window w/ 2 opening portholes in SS & w/ roll-up blind & waterproof cover Linen closet Mirror Overhead lockers & shelves Curtains Separate shower w/ curved Plexiglas door & bench Sliding door b/n WC.

#### VIP Guest at Bow

SAT TV w/ Bose 321 system 2 Book shelves Car stereo w/ 2 loudspeakers 2 Drawers underneath bed Escape hatch w/ sliding cover Fully fitted carpet Mirror inside one closet Curtains Shelves Reading lights 2 SS opening portholes w/ covers TV and outlets Ventilation under bed Wardrobe Queen size bed Two wardrobes 26" LCD TV CD/DVD Private attached head Blackout blinds.

#### Guest & VIP Heads

Electric ceramic WC (w/ fresh water) Floor in teak, mat painted Mirror Overhead locker (only in port guest bathroom) Overhead lockers & shelves Curtains Shower w/ Plexiglas partition SS opening porthole Washbasin w/ marble counter tops

#### Crew Quarters

---

2 Bunk beds Locker & storage Curtains Reading lights Washer/Dryer combo x 2 SS opening porthole w/ cover

### **Crew Head**

Electric marine WC w/ fresh water Handheld shower SS opening porthole Storage Washbasin WC control panel

### **Lobby in Crew & Engine Room**

Crew lounge in lieu of storage

### **Salon**

Beautifully styled and well detailed, the Ferretti 731 achieves a near-perfect balance of luxurious accommodations.

Her interior is nothing short of spectacular in its execution of the layout in the salon with fully fitted carpet, its teak woodwork and plush furnishings, it is both appealing in size and comfort.

The main salon features two leather armchairs, to port and starboard of the aft sliding door, and two leather sofas, to port and to starboard, with matching coffee tables and a centrally located TV with lift. Each sofa and arm chair share wood end tables.

Aft sliding door in Stainless Steel SAT TV DVD Surround sound system Hi-Fi Bose 3-2-1 with subwoofer.

### **Dining Area**

Located one step up, forward from the salon area, it provides teak storage cabinetry and a beautiful crystal glass dining table with eight (8) leather chairs. Also, a wood stairway leads to the Flybridge.

### **Galley**

Bosh ceramic cooking ring w/ 4 rings Cupboards Miele Dishwasher Electric/microwave combined oven Extractor fan ducted externally (230V) Fridge/ Freezer Granite counters Overhead lockers Skylight w/ cover Watertight exit door w/ manual movement Vinyl wooden floor

## Flybridge

Car stereo CD w/ watertight panel & 4 loudspeakers Cover for helmsman seat, bench & coach  
Electrical operated fully directable forward searchlight Electrohydraulic davit for lifting &  
launching tender from the spoiler & from the fly Electrohydraulic powered steering Electronic  
controls for engine clutch & throttle Electronic digital chain counter Fiberglass radar arch Fully  
fitted sink, fridge lt. 50 24V & locker BBQ Grill Helmsman bench w/ turn-around seat (180\*),  
manually & w/ electro-hydraulic lifting Housed light buoy & floating rope Instrument panel w/  
electrical opening (2) Life rafts - 6+6 Lights on fly Plexiglas & stainless front deflector w/ side  
panels Railing Rudder angle indicator Salon & cockpit stairs skylight Control station w/  
instrument & alarms Signal/flag mast Sun lounge pad w/ sunbathing cushions TV antenna U-  
shaped sofa & table w/ extension

## Forepeak

Anchor chain lockers (2) Inspection covers (2) Salt water outlet w/ hose for chain washing  
Winch push button controls

## Engine Room

Access hatch from the cockpit Air intakes w/ remote controlled shut off Automatic/ manual fire  
extinguisher Bilge pump Change over valve to allow engines to pump water from the bilge  
Double water tight insulated bulkhead at bow Electric self-locking blowers (2) Fresh water outlet  
for filling & washing Fuel filters (Racor) Fuel tank in fiberglass lt. 5500 w/ settling tank &  
discharge Inspection lights Portable lamp Raw water engine filters Tool kit Transparent  
gauge indicator in the fuel tank Water tight bulkhead abaft

## Electronics & Navigation Equipment at Main Helm

Naviop system touch screen monitoring system Barometer, clock & hydrothermometer cabinets  
Cigarette lighter outlet 12v plug Control station w/ full instrumentation Electrohydraulic power  
steering Electronic controls for engine clutch & throttle Electronic digital chain counter Fully  
fitted carpet Electric Helmsman seat w/ manual fold down companion seat Instant parallel  
battery Integrated device for electric system control w/ touch screen display L-shaped sofa w/  
sliding table Magnetic compass Rudder angle indicator Sliding watertight door, manual  
Gallinea windshield wipers w/ washers (3) & timer Teak w/ satin finish MAN digital readouts  
Quick chain counter Ilt Jabsco - searchlight Maptech radar and Maptech Nav system Lower  
helm Samsung display for Nav system Icom VHF lower and upper helm stations Simrad AP26  
autopilot KVF M7 Satellite Bow thruster control LCD Simrad speed depth temp IS15

## Hull & Deck Equipment

Glendinning shore line cable mt. 15 Access to swim platform through fixed stairs Aft window & sliding door in stainless steel Anchors (2) Bruce type kg. 30 w/ 2 chains 2 Boat hooks housed Bow pulpit w/ side rails 2 Bow rollers Capstans 700W (2) w/ foot-operated controls Cleats mid-ship- 2 each side 4 Cockpit chairs Cockpit lights Electric windlass 2000W w/ controls on foredeck, bridge & fly bridge (2) Electrohydraulic folding ladder to water in the aft swim platform Electrohydraulic telescopic gangway in painted SS & teak w/ remote control Electrohydraulic folding bench w/ cushions at transom Extensible teak cockpit table (2100mm X 950mm) w/ storage for chairs External acoustic alarm for bilge water level fore, engine room & spoiler Fairleads Fenders Cockpit sink w/ hot cold fresh water & sea water supply Fully fitted stern lockers giving access to crew cabins & engine room Horn w/ compressor Ice maker Indirect lighting Ladder to fly bridge in fiberglass & teak 4 mooring lines Navigation lights Remote shutoff of engines & generators fuel hoses Salt water outlet at transom, in the forepeak & in the galley Shower w/ hot/cold water at transom Sliding watertight doors (2) manually operated Stainless steel deck hardware Stereo loud speakers (2) in the cockpit Sun lounge pad at bow w/ sunbathing cushions Teak deck & cockpit floor Wheelhouse windows w/ side openings Black windscreen covers Lower control station in cockpit

## Equipment

2 Mitsubishi Gyros stabilizers (1) 2000 ARG (1) 4000 ARG 2 Kohler Generators Bow Thruster Cockpit docking controls Water chilled air conditioning Ice maker Glendinning cable recoiler Washer/Dryer combo Fold down transom seat Davit on Bridge Passerelle retracts & is hidden in deck when not in use (2) Six man life rafts Aft Cockpit Control Sea Recovery watermaker Electric system consisting of: 100Ah 12V auxiliary generator battery 185Ah 12V generator battery 24V lighting throughout 370Ah 24V engine starting batteries (4) 740Ah 24V automatic battery charger Battery disconnecting electronic & mechanical switches Electric outlets 230V throughout Inverter 24Vdc/ 230Vac 3000W w/ battery charger combi 100A Mechanical & electric battery parallel switch Electric WC system w/ fresh water Electrohydraulic powered steering Fire extinguishers Fresh water tank, 900 ltrs. Grey water pump w/ automatic electric pump Grey water tank, 210 ltrs. Holding tank (300lt) w/ gauge Hot water system w/ water heater lt 80 230V Remote engine & generator shut down Salt water system w/ salt water pump & 2 intakes for hoses on deck Shore plug 63A 230V Silenced underwater exhausts Smoke detection alarm in the engine room Stuffing box w/ dripless shaft seal Trim tabs (Flaps) TV/telephone shore supply VHF (2) Waste water system w/ automatic electric & manual pump

## Исключения

При продаже яхты исключаются личные вещи владельца.



---

## Отказ от ответственности

---

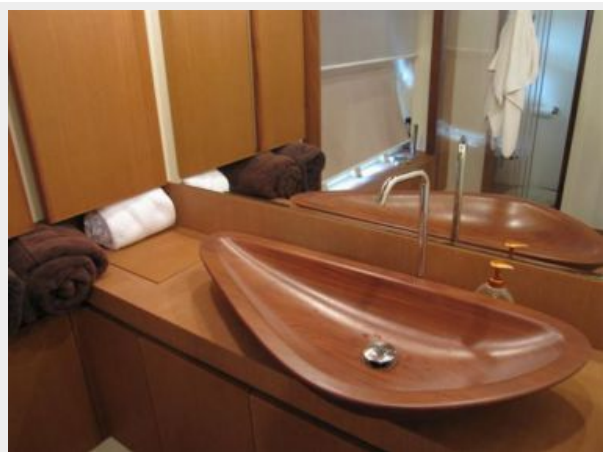
Компания предоставляет описание судна или яхты добросовестно, но не может гарантировать точность этой информации, а также не ручается за техническое состояние. Покупатель должен проинструктировать своих агентов или оценщиков исследовать представленную информацию более подробно, по собственному желанию. Продажа судна или яхты, изменение цены или снятие с продажи будет происходить без предварительного уведомления.

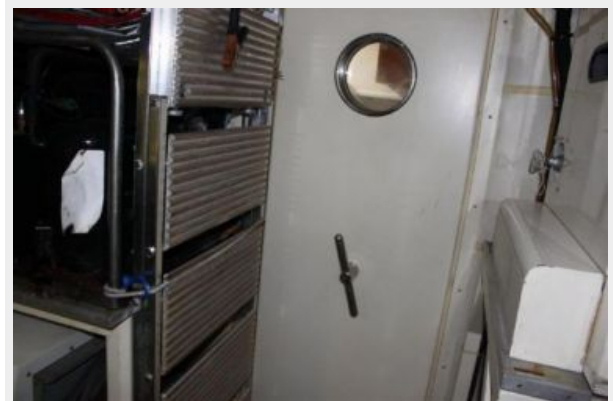
# ФОТОГРАФИИ













# КОНТАКТЫ

---

Андрей Шестаков (Andrey Shestakov) – ведущий яхтенный брокер отдела продаж яхт и судов компании Shestakov Yacht Sales Inc. Официальный представитель Shestakov Yacht Sales Inc. для русскоговорящих клиентов в центральном офисе компании в Майами/Форт Лодердейл/Флорида/США.

## Контактная информация

---

Email: [andrey@shestakovyachtsales.com](mailto:andrey@shestakovyachtsales.com)

Web: [shestakovyachtsales.com](http://shestakovyachtsales.com)

## Телефоны

---

Краснодарский край: **+7(918)465-66-44**

США, Майами, Флорида: **+1(954)274-4435**

## Время работы

---

Понедельник – Суббота: **9:00 - 21:00**  
EDT

Воскресенье: **Закрито**

## Адрес

---



Harbour Towne Marina, 850 NE 3rd St,  
STE 213, Dania, FL 33004