

ECJ LUXE — LEOPARD



Builder: LEOPARD

Year Built: 2001

Model: Motor Yacht

Price: PRICE ON APPLICATION

Location: United States

LOA: 88' 0" (26.82m)

Beam: 19' 10" (6.05m)

Max Draft: 3' 11" (1.19m)

Our experienced yacht broker, Andrey Shestakov, will help you choose and buy a yacht that best suits your needs **ECJ LUXE — LEOPARD** from our catalogue. Presently, at Shestakov Yacht Sales Inc., we have a wide variety of yachts available on our sale's list. We also work in close contact with all the big yacht manufacturers from all over the world.

If you would like to buy a yacht **ECJ LUXE — LEOPARD** or would like help answering any questions concerning purchasing, selling or chartering a yacht, please call **+1(954)274-4435**

TABLE OF CONTENTS

TABLE OF CONTENTS	2
SPECIFICATIONS	3
Overview	3
Basic Information	3
Dimensions	3
Speed, Capacities and Weight	4
Accommodations	4
Hull and Deck Information	4
Engine Information	4
DETAILED INFORMATION	5
Features	5
Exclusions	7
Disclaimer	7
PHOTOS	8
CONTACTS	19
Contact details	19
Telephones	19
Office hours	19
Address	19

SPECIFICATIONS

Overview

RECENT PRICE REDUCTION! This 27m Arno Leopard is the best example of the popular Italian Open Cruiser on the Florida market today. She is the ultimate Florida pleasure yacht combining performance, luxury, and a mere 4 foot draft on a vessel of nearly 90 feet! Excellent condition both mechanically and cosmetically, the yacht has only seen light usage having been run & maintained by a full time crew. She features the most desirable layout available in the series, with 4 guest staterooms, plus galley and 4 crew berths aft, and a fully air conditioned upper salon configuration. The yacht also saw a long list of electronic and interior decor upgrades just completed in 2014.

Major Features: Motivated seller, will consider trades: Yachts, Real Estate, Cars, Jewelry.

US DUTY PAID, FL Registration. 4 stateroom + 4 Crew berths. Air Conditioned upper Salon with sliding glass door. 16V2000 M90 Engines with only 1400 ORIGINAL hours, & Full Service records from MTU. Arneson Surface Drives capable of producing a top speed of 35 knots with a 4.5 foot draft! September 2014 - Full Arneson Service and bottom cleaning / alignment of running gear completed. September 2014 - Full Service of AC system, new pumps, and Vcool film added to all windows! ASEA Converter and all new Samsung LCD TV's throughout vessel. Stern Garage w a 12 ft. Novamarine Jet Tender included. Fully retractable electric Sunroof in Salon & Giant Canopy to cover aft sunpads. All new soft goods throughout the vessel. All exterior & interior cushions NEW Teak throughout entire vessel acid washed and treated to shine like new. All exterior lighting replaced with new LEDs Owner in the process of installing Apple TVs for all staterooms.

Basic Information

Category: Motor Yacht

Model Year: 2001

Year Built: 2001

Country: United States

Dimensions

LOA: 88' 0" (26.82m)

Beam: 19' 10" (6.05m)

Max Draft: 3' 11" (1.19m)

Speed, Capacities and Weight

Water Capacity: 525 Gallons

Fuel Capacity: 2111 Gallons

Accommodations

Total Cabins: 4

Crew Sleeps: 4

Hull and Deck Information

Hull Material: Fiberglass

Engine Information

Engines: 2

Manufacturer: MTU

Model: 16V2000

Fuel Type: Diesel

DETAILED INFORMATION

Features

This 27m Arno Leopard is the best example of the popular Italian Open Cruiser on the Florida market today. She is the ultimate Florida pleasure yacht combining performance, luxury, and a mere 4 foot draft on a vessel of nearly 90 feet! Excellent condition both mechanically and cosmetically, the yacht has only seen light usage having been run & maintained by a full time crew. She features the most desirable layout available in the series, with 4 guest staterooms, plus galley and 4 crew berths aft, and a fully air conditioned upper salon configuration. The yacht also saw a long list of electronic and interior decor upgrades just completed in 2014.

Major Features: Motivated seller, will take Trades! US DUTY PAID. 4 stateroom + 4 Crew berths. Air Conditioned upper Salon with sliding glass door. 16V2000 M90 Engines with only 1400 ORIGINAL hours, & Full Service records from MTU. Arneson Surface Drives capable of producing a top speed of 35 knots with a 4.5 foot draft! September 2014 - Full Arneson Service and bottom cleaning / alignment of running gear completed. September 2014 - Full Service of AC system, new pumps, and Vcool film added to all windows! ASEA Converter and all new Samsung LCD TV's throughout vessel. Stern Garage w a 12 ft. Novamarine Jet Tender included. Fully retractable electric Sunroof in Salon & Giant Canopy to cover aft sunpads. All new soft goods throughout the vessel. All exterior & interior cushions Teak throughout entire vessel acid washed and treated to shine like new. All exterior lighting replaced with new LEDs Owner in the process of installing Apple TVs for all staterooms.

UPDATES

All new exterior canvas All new main deck upholstery All new upholstery belowdecks All new carpet throughout All new AV and flat screens throughout Sat TV and Raymarine Navigation equipment Pilot seats reupholstered New lines on hull repainted New power converter, ACA power AC25L LED upgrades throughout Engine service and generator service up to date Propeller alignment, prop speed and Arneson drive system service up to date

Accommodations

Owner's Cabin & Lounge: Suite on lower deck, Queen Size bed, ensuite bathroom with shower, TV LCD Samsung, Sat Receiver and Sony home theater. Lower salon and mini office located directly outside owners cabin full beam.

VIP Cabin: Located Bow, Queen Size bed with ensuite bathroom, Samsung LCD TV and home theater system.

Starboard Cabin: Double bed, TV LCD Samsung, Pioneer home theater. Ensuite bathroom.

Portside Cabin: Twin beds, (3rd fold down Pullman bed), ensuite bathroom, TV LCD Samsung, Pioneer home theater.

Crew: 2 cabins sleep 4, bunkbed configuration with shared bathroom adjacent to engine room with crew mess in galley, Radio CD Sony, CCTV Cameras.

Salon

Large Salon on main deck with 2 separate dining areas, and third table that transforms hydraulically into day lounge with cushions.

Deck saloon with 50" LCD 3D Samsung TV DENON Home theater Sytem DVD player Forward Samsung DVD player Sat TV receiver.

Upgraded B&W Sound System with Subwoofer.

New pull down rolling sunshades on all aft Salon windows.

Galley & Laundry Equipment

Miele oven Miele microwave Miele hotplate induction Miele professional dishwasher Stainless steel Day freedge and freezer Miele washing and dryer machine Crew mess with LCD TV, DVD and video

Navigation & Communication System

Satellite TV raymarine Radar Simrad RA42 Plotter Simrad CX44 Autopilot Robertson AP20 GPS furuno GP32 Follow up (Tiller) Robertson FU35 Bow thruster hydraulic VHF Skanti TU1000DSC Siemens digital internal telephone Navtex furuno Log speed wind Simrad IS15 EPIRB CR rlb36 cat I sun deck with car radio Sony.

Mechanical

2 x MTU 16V2000 M90 (1400 hours)

2x Kohler generators, 25kw and 19kw

ASEA Frequency Converter.

New AC pumps and Vcool film on windshield.

Safety & Security

Two New main life rafts EPIRB CR SART Balise McMurdo Heat & Smoke detector throughout Boat fire alarm Fixed installation on tender garage Co2/Dry Powder foam extinguisher throughout 4 camera Panasonic Telecamera engine room Panasonic Telecamera deck Panasonic

Toys

Tender Novamarine RH 350 Jet 175 HP Mercury In-board

Exclusions

Owner's personal belongings.

Disclaimer

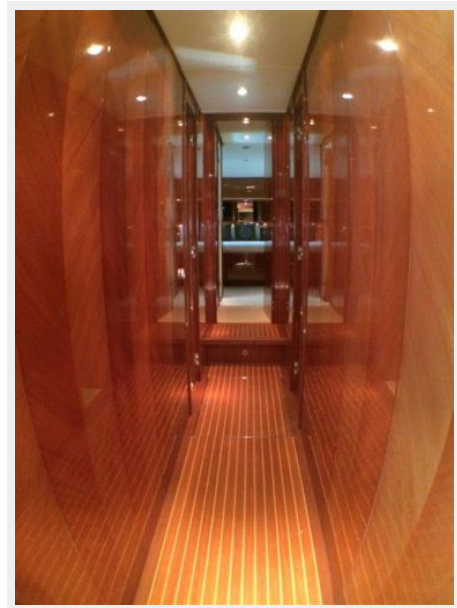
The Company offers the details of this vessel or yacht in good faith but cannot guarantee or warrant the accuracy of this information nor warrant the condition of the vessel. A buyer should instruct his representatives, agents, or his surveyors, to investigate such details as the buyer desires validated. This vessel or yacht is offered subject to prior sale, price change, or withdrawal without notice.

PHOTOS

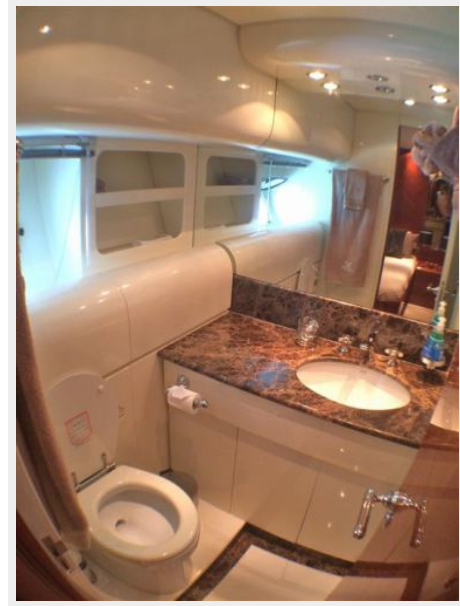






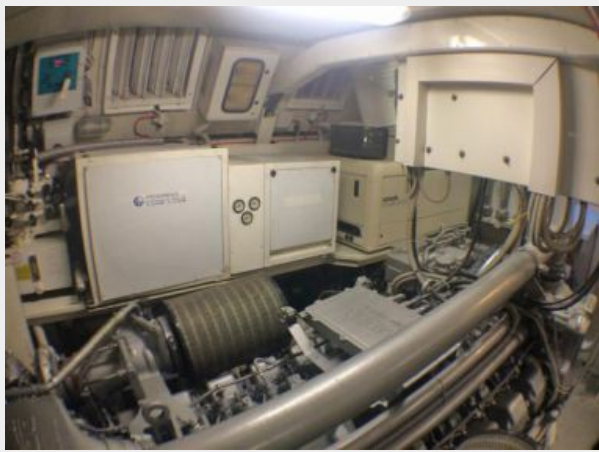
















CONTACTS

Andrey Shestakov, leading yacht broker of the sales department of Shestakov Yacht Sales Inc. Shestakov Yacht Sales Inc., the official representative of the Miami/Fort Lauderdale FL headquarters.

Contact details

Email: andrey@shestakovyachtsales.com

Web: shestakovyachtsales.com/en/

Telephones

USA: +1(954)274-4435

Office hours

Monday – Saturday: **9:00 - 21:00** EDT

Sunday: **closed**

Address



Harbour Towne Marina, 850 NE 3rd St,
STE 213, Dania, FL 33004