

## NIPPA — NORDIC TUGS



**Builder:** NORDIC TUGS

**Year Built:** 2010

**Model:** Motor Yacht

**Price:** PRICE ON APPLICATION

**Location:** United Kingdom

**LOA:** 33' 10" (10.31m)

**Beam:** 11' 1" (3.38m)

**Min Draft:** 3' 11" (1.19m)

**Cruise Speed:** 8 Kts. (9 MPH)

**Max Speed:** 17 Kts. (20 MPH)

Our experienced yacht broker, Andrey Shestakov, will help you choose and buy a yacht that best suits your needs **NIPPA — NORDIC TUGS** from our catalogue. Presently, at Shestakov Yacht Sales Inc., we have a wide variety of yachts available on our sale's list. We also work in close contact with all the big yacht manufacturers from all over the world.

If you would like to buy a yacht **NIPPA — NORDIC TUGS** or would like help answering any questions concerning purchasing, selling or chartering a yacht, please call **+1(954)274-4435**

# TABLE OF CONTENTS

---

TABLE OF CONTENTS	2
SPECIFICATIONS	4
Overview	4
Basic Information	4
Dimensions	4
Speed, Capacities and Weight	4
Accommodations	4
Hull and Deck Information	5
Engine Information	5
DETAILED INFORMATION	6
Broker's Comments	6
Construction	6
Machinery	7
Electrical Systems	8
Plumbing Systems	10
Tankage	10
Navigation Equipment	11
Domestic Equipment	11
Accommodation	13
Deck Equipment	15
Exclusions	16
Disclaimer	16
PHOTOS	17
CONTACTS	26
Contact details	26
Telephones	26
Office hours	26
Address	26



---

# SPECIFICATIONS

---

## Overview

---

Absolutely pristine 2010 one-owner example with 351 hours of this super-versatile US-built Nordic Tugs single screw cruiser. Generator, heater, defroster, autopilot, etc.- huge range and 17 knots on tap.

## Basic Information

---

**Category:** Motor Yacht

**Sub Category:** Displacement

**Model Year:** 2010

**Year Built:** 2010

**Country:** United Kingdom

## Dimensions

---

**LOA:** 33' 10" (10.31m)

**LWL:** 32' 8" (9.96m)

**Beam:** 11' 1" (3.38m)

**Min Draft:** 3' 11" (1.19m)

## Speed, Capacities and Weight

---

**Cruise Speed:** 8 Kts. (9 MPH)

**Max Speed:** 17 Kts. (20 MPH)

**Displacement:** 15696.9130544 Pounds

**Water Capacity:** 100.121207708 Gallons

**Holding Tank:** 56.004475024 Gallons

**Fuel Capacity:** 204.997512352 Gallons

## Accommodations

---

**Total Cabins:** 1

**Total Berths:** 4

**Total Heads:** 1

---

## Hull and Deck Information

---

**Hull Material:** GRP

**Deck Material:** GRP

**Hull Designer:** Lynn Senour

---

## Engine Information

---

**Engines:** 1

**Manufacturer:** Cummins

**Model:** QSD 4.2

**Engine Type:** Inboard

**Fuel Type:** Diesel

---

# DETAILED INFORMATION

---

## Broker's Comments

---

This 2010 Nordic Tug 32 pilothouse trawler is in quite exceptional condition, with only 343 engine hours logged to date (May 2015). The bilges are pristine, and the interior wholly unmarked. With a specification far higher than standard, this rugged, go-anywhere coastal cruiser is beautifully built, with proper, correct ship-building on display throughout; from her delightfully straight wiring runs to her perfectly polished stainless. Nordic Tugs are hand-built in America with 10 year Gold Standard hull warranty and have a complete standard specification.

Very rare in the UK, this is a characterful, superbly thought-out little gem, and is presented in A1 concours state.

## Construction

---

*RCD Status: The yacht conforms with the essential safety requirements of Directive 94/25EC (Recreational Craft Directive) and is categorised B.*

### *Hull & Superstructure Construction:*

- Oyster gel coat colour with flag blue inset/boot stripe.
- Hull guards (UV-stabilized PVC-guards; anchor, hull and sheer, 316 stainless steel inset on hull side guard).
- All exterior fasteners in 316 stainless steel.
- Bonding System (plate anode on transom, rudder, shoe and thruster zincs).
- Black antifouling.
- Headroom: Saloon 6'6" / 1.98m.
- Height from: Waterline-top (to stack top) 10'0" / 3.05m.
- Freeboard: at cockpit 2'11" / 0.89m.
- Freeboard: Amidships, at pilot house door 3'9" / 1.14m.
- Headroom: Pilothouse 6'7" / 2.01m.

- Headroom: Forward cabin 6'3"/ 1.9m.

#### *Deck Construction:*

- Oyster gel coat colour.
- Moulded textured surface in walking and work deck areas.

## **Machinery**

---

#### *Engine & Gearboxes:*

- 1 x Cummins QSD 4.2-270 HP electronically controlled diesel engine.
- Fuel filter element for primary Racor filters.
- ZF 63 at 2. 8:1 marine reduction gearbox.
- Racor fuel/water separator filter.
- Bronze seawater strainer.
- Exhaust overheat alarm (cooling water flow temperature sensor).
- Exhaust muffler.
- Cummins SmartCraft engine instrumentation.
- ZF cruise command electronic single lever throttle/shift engine controls.

#### *Maintenance & Performance:*

- Engine hours: c. 351 at December 2015.
- Cruising speed: 8-14 knots.
- Max speed: 17 knots.

#### *Propulsion & Steering:*

- Stainless steel propeller shaft with PSS drip less shaft seal.
- Hung Shen 4-blade propeller tuned to ISO-484 pitch tolerances.

- Ambassador rope stripper.
- Sleipner Side-Power bow thruster (with joystick control).
- Helm wheel (teak spokes and rim with brass trim).
- Tiller arm in bronze with rudder stops.
- Rudder port bearing and shaft lip seal.
- Rudder and shoe in stainless steel with sacrificial zincs.
- Teleflex hydraulic steering system.
- Valves for autopilot hydraulic pump connection.

#### *Other Mechanical Equipment:*

- Corian care and maintenance video.
- Multi-bit screwdriver.
- Stainless steel deck fitting key.
- Ultra Performance 3M9030 shaft seal O-ring kit clear silicone.
- Snap Cat kit.
- Assortment of screws & caps.
- Matched gel coat touch-up kit.
- Reduction gear manual owner's manual with schematics.
- Tug operators manual.
- Cummins engine manual.
- Full set of new filters and main engine impellor.

---

## **Electrical Systems**

#### *Voltage Systems:*

- Blue Sea European 220V AC panel; with sound shield.
- 12V DC electrical system.



- Ancor marine-grade tinned copper wiring throughout.
- Breaker panel 12VDC (Blue Sea 36 position with LED lights).
- Master house bank circuit breaker, switched at DC panel.
- Battery parallel switch.
- Blue Sea 220VAC breaker panel with LED lights.
- 240VAC GFCI outlet in engine room.
- 2 x 220VAC GFCI outlets in galley.
- 2 x 220VAC outlet in saloon.
- 220VAC duplex GFCI outlet in heads compartment.

#### *Battery Banks:*

- AGM batteries.
- House batteries (4 x 6V deep cycle golf-cart type with battery boxes, 450 amp hours).
- Start batteries (12V 8D with battery box).
- Bow thruster/windlass battery (12V).

#### *Battery Chargers:*

- Mastervolt 12/50 3 Chargemaster charger.
- Automatic charge relay charging system.

#### *Alternators:*

- Engine-mounted alternator.

#### *Generator:*

- Fischer Panda 4kw generator.
- Running hours – 8.2 at May 2015.

### *Shore Power:*

- Shore power connections – 30amp with cord.

### *Other Electrical:*

- Outback inverter.
- Dual electric horn.
- 220V anti-surge device.

---

## **Plumbing Systems**

---

### *Fresh Water & Water Heating System:*

- Hot water tank – electric/engine heat.
- Fresh water pump – Jabsco SensorMax constant pressure.

### *Bilge Pumps:*

- 3 x Rule, auto/manual switch at helm.
- High bilge water alarm – mounted in engine room, audible at helm.

### *Grey & Black Water:*

- Dometic blackwater monitoring.

---

## **Tankage**

---

- Tank monitoring for fresh water, black water and fuel.
- Stainless steel fuel fill, stainless steel water fill.
- Stainless steel waste suction fitting.

*Fuel:*

- Total capacity of 776 litres/205 Gall. in one tank.
- Fuel gauge integrated in SmartCraft DieselView LCD.

*Fresh water:*

- Total capacity of 379 litres/100 Gall.

*Grey/Blackwater holding tanks:*

- Black water (in keel, with deck suction & macerator) (114 litres/30 Gall. total capacity).
- Grey water holding tank (in keel, with automatic 12VDC pump) (98 litre/26 Gall. total capacity).

*Gas:*

- Propane system (regulator, valve, leak sensor and aft deck storage box for 2 bottles).

## Navigation Equipment

---

- Furuno 711 Navpilot autopilot with PG700 compass.
- Furuno 12'1" NavNet 3D colour multifunction display with MFD12 GPS antenna and mount.
- Furuno 19" radar scanner.
- Digital Yacht AIS200 PRO receiver with 1.2m antenna and ratchet mount.
- Furuno FI50 digital Depth & Speed.
- Icom M411 DSC VHF & antenna.
- Ritchie steering compass.

## Domestic Equipment

---

*Galley:*

- 
- Isotherm refrigerator under galley counter.
  - Corian countertop.
  - Cabinets (teak faced; teak doors and drawer faces).
  - Stainless steel sink to galley.
  - Drawers (States ApplePly, solid teak faces, ball bearing tracks & sea locks) & lockers.
  - Force 10 propane 2-burner stove/oven.

#### *Heads/Showers:*

- Cockpit shower.
- Dometic vacu-flush WC.
- Moulded Corian sink with faucet.
- Shower (fibreglass rail and curtain) with moulded seat.
- Electric heads ventilator fan.

#### *Heating & Ventilation:*

- Espar diesel-fired heating & cooling furnace.
- Walker airsep air filter system.
- 12VDC defroster with 2-speed fan.

#### *Entertainment:*

- Phone/TV dock connection.

#### *Lighting:*

- Upgraded navigation lights – LED stern light, and all-round white adjustable to help bridge clearance .
- Lights in engine room.

- Saloon: reading 12VDC, 8 x 12VDC Xenon overhead lights and LED stair lights.
- 12VDC red LED overhead in pilot house.
- 12VDC Xenon overhead in pilothouse.
- 12VDC overhead dome lights in heads compartment.
- 12VDC reading lights over berth in owner's cabin.
- 12VDC Xenon overhead lights in owner's cabin.

## Accommodation

---

### *Summary of Accommodation:*

- Upgrade teak and holly sole to wheelhouse with upgrade blue carpeting to saloon and forward cabin soles.

### *Windows/Hatches:*

- Windows (Diamond Sea Glaze Oyster powder coated).
- Doors (Diamond Sea Glaze Oyster powder coated: 2 x sliding pilot house entry and 1 x aft entry with hatch).
- Portlights.
- Windshield wipers (3 x pantograph style, adjustable speed, self-park with washer systems).
- Hatch (Bomar with screen in owner's cabin).
- Custom blinds fitted to saloon windows.

### *Interior Finish and Trim:*

- Brisa Distressed Ultrasuede upholstery to saloon & pilot house: Corian solid surface countertops to galley, saloon and head.
- Overhead and bulkhead coverings in vinyl with foam backing.
- Upgrade teak valances in saloon.
- Teak interior passageway doors and trim (pocket sliding door to forward cabin).

- Teak cabinet doors and drawer faces.

*Description of layout:*

*Saloon:*

- Cabinet on stbd side aft with door.
- L-shaped settee to port (converts to double bed with storage under).
- Teak table with fixed base.
- Heater controls to forward port bulkhead.

*Pilot House:*

- Chart table Wilsonart graphic laminate top, teak-faced.
- Full width overhead instrument console with storage.
- Helm seats on adjustable sliders with teak foot rests.

*Heads Compartment:*

- Vanity cabinet with storage below, teak door, Corian top.
- Mirror over sink.
- Fixtures (towel hooks and bar).

*Owner's Cabin:*

- Full-width Island berth with upgrade sprung mattress.
- 2 x drawers under berth.
- Hull side storage cabinets with open shelves forward.
- Hanging lockers, with automatic lights.
- Heater vent to forward cabin.

---

## Deck Equipment

---

### *General:*

- Jabsco remote control searchlight.
- Pennant staff on bow rail.
- Stainless steel Samson post to bow.
- 2 x stainless steel hand grabs forward, and 1 x aft of pilot house doors.
- Stainless steel hand rails on pilot house top.
- Extra stainless steel rails on sundeck cabin top and ladder.
- Deck rails, 1-1/4" bow and stern.
- Aft deck box in cockpit.
- Scuppers in cockpit.
- Sea water deckwash fore & aft.
- Stainless steel hand grab on transom over swim ladder.
- Swim ladder, built into boarding platform.
- Upgrade customised folding pony mast.

### *Anchoring & Mooring Equipment:*

- Fenders and lines.
- Anchor light.
- Lofrans electric windlass, 1000W, 12VDC.
- Stainless steel anchor roller assembly.
- ROCNA bow anchor, with chain.
- Stainless steel cleats.

### *Fire-fighting equipment:*

- Manual fire extinguishers.
- Fireboy CG2-500 fire suppression system.

## **Exclusions**

---

Owner's personal belongings.

## **Disclaimer**

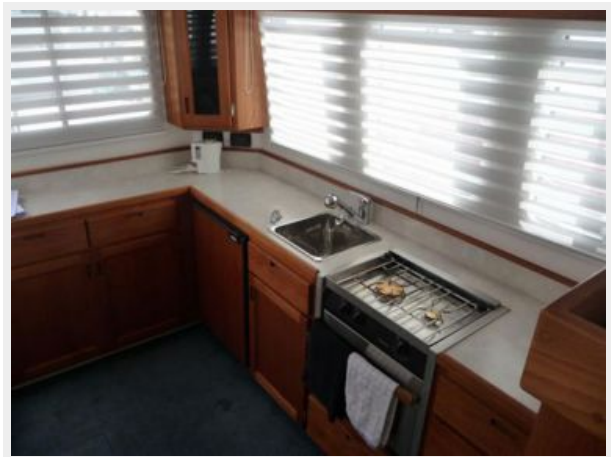
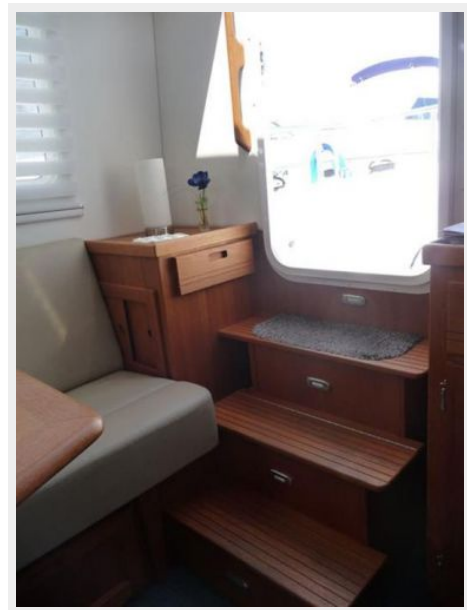
---

The Company offers the details of this vessel or yacht in good faith but cannot guarantee or warrant the accuracy of this information nor warrant the condition of the vessel. A buyer should instruct his representatives, agents, or his surveyors, to investigate such details as the buyer desires validated. This vessel or yacht is offered subject to prior sale, price change, or withdrawal without notice.



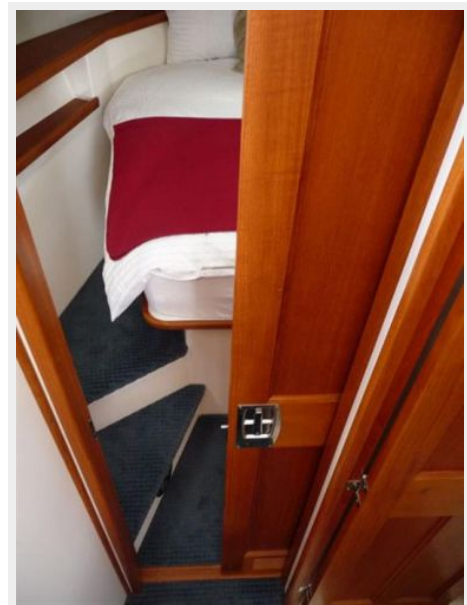
# PHOTOS

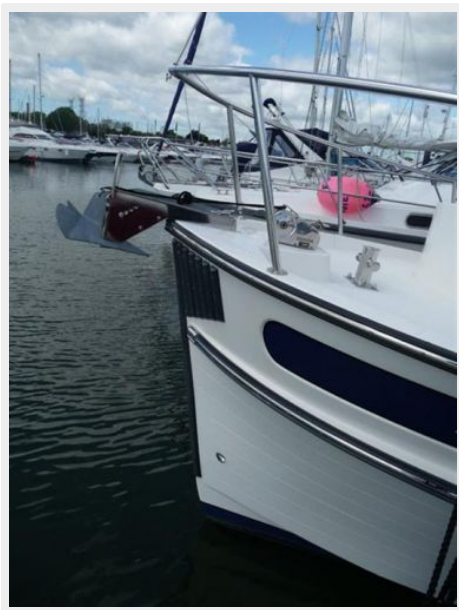




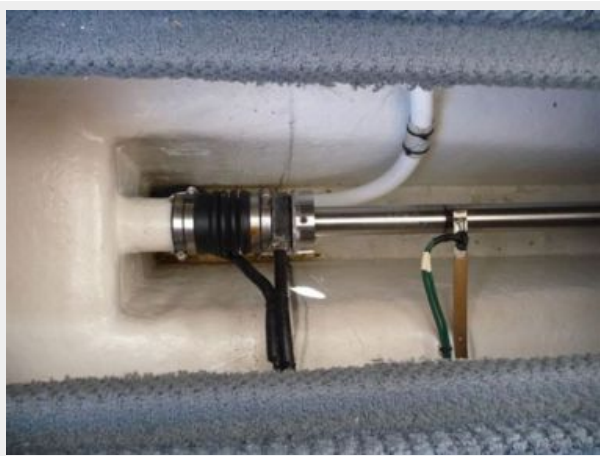




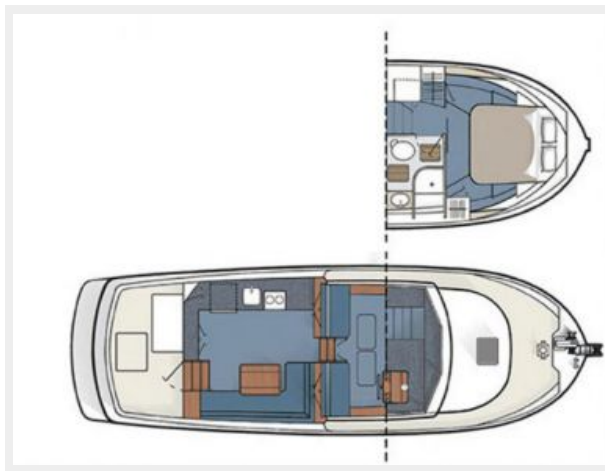












# CONTACTS

---

Andrey Shestakov, leading yacht broker of the sales department of Shestakov Yacht Sales Inc. Shestakov Yacht Sales Inc., the official representative of the Miami/Fort Lauderdale FL headquarters.

## Contact details

---

Email: [andrey@shestakovyachtsales.com](mailto:andrey@shestakovyachtsales.com)

Web: [shestakovyachtsales.com/en/](http://shestakovyachtsales.com/en/)

## Telephones

---

USA: +1(954)274-4435

## Office hours

---

Monday – Saturday: **9:00 - 21:00** EDT

Sunday: **closed**

## Address

---



Harbour Towne Marina, 850 NE 3rd St,  
STE 213, Dania, FL 33004