

COLBY JEAN — VIKING



Судостроитель: VIKING

Год постройки: 2005

Модель: Катер для спортивной рыбалки

Цена: **ЦЕНА ЯХТЫ ПО ЗАПРОСУ**

Местонахождение: United States

Длина общая: 74' 0" (22.56m)

Ширина: 19' 9" (6.02m)

Мин. осадка: 5' 6" (1.68m)

Купить Colby Jean — VIKING а также выбрать подходящую вам яхту из нашего каталога яхт вам поможет опытный яхтенный брокер Андрей Шестаков. На сегодняшний день компания Shestakov Yacht Sales Inc. имеет большое количество яхт в собственном списке продаж, а также тесно сотрудничает со всеми крупными яхтенными производителями по всему миру.

Для того чтобы купить яхту Colby Jean — VIKING а также проконсультироваться по любому вопросу связанному с покупкой, продажей, чартером яхт позвоните по телефону **+7(918)465-66-44**.

ОГЛАВЛЕНИЕ

ОГЛАВЛЕНИЕ	2
ХАРАКТЕРИСТИКИ	6
Основная информация	6
Размеры	6
Скорость, вместимость и масса	6
Размещение	6
Корпус и палуба	6
Информация о двигателе	7
ПОДРОБНОЕ ОПИСАНИЕ	8
Remarks	8
Salon	8
Galley	9
Dining	9
Companionway	10
Master Stateroom	10
Master Head	11
Foward Guest VIP Stateroom	11
Foward Guest VIP Head	12
Port Guest Stateroom and Head	12
Starboard Stateroom	13
Crew Quarters and Head	14
Deck Exterior	15
Cockpit	15
Enclosed Flybridge	17
Electronics	18
Tower	19
Engine Room	19
Exclusions	21

Исключения	21
Отказ от ответственности	21
ФОТОГРАФИИ	22
Salon	22
Salon	22
Salon	22
Salon Seating	22
Salon Seating	22
Salon Day Head	22
Dinette	23
Dinette	23
Galley	23
Galley	23
Galley	23
Sub Zeros	23
Electrical Panel	24
Master Stateroom	24
Master Stateroom	24
Master Stateroom	24
Master Stateroom	24
Master Stateroom	24
Master Stateroom	24
Master TV	25
Master Head	25
Forward Guest Head	25
Forward VIP Stateroom	25
Forward Guest Head	26
Forward Port Stateroom	26
5th Stateroom Starboard Mid	26
Crew's Quarters Aft	26

Companionway	27
Crew's Head	27
Laundry	27
Enclosed Bridge	27
Enclosed Bridge Seating	27
Enclosed Bridge TV	27
Flybridge Mezzanine	28
Auxiliary Controls	28
Palm Beach Tower	28
Cockpit	28
Cockpit	28
Cockpit	28
Cockpit	29
Mezzanine Seating	29
Fighting Chair with Rocket Launcher Back	29
Transom	29
Port Bow	29
Starboard Bow	29
Starboard Profile	30
Starboard Profile	30
Engine Room	30
Engine Room	30
Engine Room	30
Port Generator	30
Transom	31
Valve Covers	31
КОНТАКТЫ	32
Контактная информация	32
Телефоны	32

Время работы	32
Адрес	32

ХАРАКТЕРИСТИКИ

Основная информация

Тип судна: Катер для спортивной рыбалки

Подкатегория: Convertible

Модельный год: 2005

Год постройки: 2005

Страна: United States

Размеры

Длина общая: 74' 0" (22.56m)

Ширина: 19' 9" (6.02m)

Мин. осадка: 5' 6" (1.68m)

Скорость, вместимость и масса

Вместимость воды: 385 Gallons

Вместимость сточного бака: 250 Gallons

Объем топливного бака: 3000 Gallons

Размещение

Всего кают: 5

Корпус и палуба

Материал корпуса: Fiberglass

Информация о двигателе

Двигатели: 2

Производитель: MTU

Модель: 16V2000 M91

Тип двигателя: Inboard

Тип топлива: Diesel

ПОДРОБНОЕ ОПИСАНИЕ

Remarks

Colby Jean is one of the very few sought after 5 stateroom 74 Vikings built and powered with the proven MTU 16V2000M91 engine package. Aside from its abundance of extras incorporated during its building from an owner that spared no expense, this vessel received a major refit in 2012 consisting of new electronics complete hull and topside paint, 3000 hour service, 2 new generators, and updated interior and exterior soft goods. The vessel just recently received a refinish on the teak transom, complete fluid change on mains and generators as well as a fresh bottom job. This is currently only the second owner of this 74.

As with its original owner, Colby Jean is kept up with an open checkbook policy by a very detailed professional captain. The vessel shows terrific and exemplifies excellent value in the current market.

Salon

Hunter Douglas Silhouette Blinds

Wall to Wall Carpeting with Vinyl Lined Padding for Sound Absorption

Canvas Carpet Runners

Coffee Table Ottoman with Storage Below

Salon Ultraleather Sofa with Lift Up Storage Below

Custom Amtico Flooring at Salon Entrance

Teak in Place of Mirror on Aft Side of Galley Island and Dinette

Pop Up 55" Samsung Smart TV on Raise and Lower Mechanism Located in Port Credenza Forward of Raised Main Electric Panel (New 2014)

Salon Kenmore Clear Ice Maker Below Main Electric Panel (New May 2015)

Overhead Lights Recessed with Dimmer Switches

Indirect Decorative Rope Lighting Behind Valances

Electric Sliding Salon Door, Molded Fiberglass Door with Window, Key Lock and Teak Finish

Teak Cabinetry with Drawers and Bottle Storage

Custom Fabric Lambrequins Framed in Solid Teak

Teak Trim where Amtico Floor meets Carpet

Custom Teak Fluted Valances

Teak Aft Bulkhead

Bose Home Theatre System (Bose 3-2-1)

Liquor Bottle Storage, Concealed, between Dinette and Salon Sofa

Salon Carpet Runner

Universal Remote for AV Equipment

Custom Bar Stools

Galley

(6) Sub-Zero Large Capacity Refrigerator and Freezer Deep-Drawers Under Counter

(1) 110V Outlet on Bottom of Upper Cabinet and (1) Inboard in Galley

Chrome Galley Faucet

Custom Amtico Teak & Holly Flooring

Dimmers on Overhead Halogen Lights

Large Pull Out Storage Cabinets Forward above Galley

Granite Counter Tops with Overhang for Bar Stool Area

Stainless Steel Sink, Under mount

Storage Forward Below Sink with Bank of Drawers Inboard

Day head Forward of Galley with Storage Access Outboard

Gageneau Oven

Surface Mounted Glass Cook Top

Microwave Convection, Behind Cabinet Doors

Dining

Dinette Couch with Removable Cushions and Storage Underneath

Samsung 46" Slim LED Smart TV Mounted above Dinette (New 2014)

Teak Dinette Table with High Gloss Finish and Single Pedestal, thru Bolted

Companionway Access Forward of Dinette

Companionway

Bilge Areas Painted with Awlgrip

Carpeting and Carpeted Steps from Galley through Companionway

Canvas Carpet Runner with Step Covers

Central Vacuum Unit Connection with Accessories

Curved Staircase with Banister along Starboard Hull Side

Laundry Center with Stackable Washer and Dryer behind Teak Door at Entrance to Crew Stateroom

Sub Panel Located at Base of Steps on Starboard Side

Teak Credenza with Lift Up Storage Compartments along Starboard Side of Companionway

Master Stateroom

Nearly Full Beam Master Stateroom

Custom King Size Mattress

Teak Topped Entry Credenza with 4 Drawers

Teak Topped End Tables with Cabinets Storage Below

Indirect Rope Lighting Below Master Bed

Samsung 32" LCD Flat Screened TV with Entertainment Center Including CD Stereo, DVD Player, VCR and Bose 321

Additional 110V, Telephone and Television Outlet

Night Table Lamps - Hardwired

Corner Settee

Large Cedar Lined Hanging Locker Forward of Settee

Dimmer Lights

Custom Fluted Teak Columns Above Night Tables

Security Safe

Custom Vaulted Crown Molding in Headliner with Indirect Lighting

Master Head

Mirrored Ceiling

One Piece Custom Frameless Shower Door

Large Stall Shower – Fiberglass Molded

Brass Shower & Faucet Fixtures, Towel Bars and Rings

Granite Vanity Countertop with Teak Facing on Lower Vanity

Amtico Teak and Holly Flooring

Vacuflush Head System

Custom Wall Paper

Exhaust Fan

Linen Cabinet with Shelves and Mirrored Face

Foward Guest VIP Stateroom

A/C with Reverse Cycle Heat and Temperature Control

Crossover Berth Arrangement

Upgraded Orthopedic Mattresses

Sharp Flat Screen TV Mounted in Teak Panel with JVC DVD Player

Carpeting

Quilted Bedspreads

Teak Hanging Locker, Cedar-Lined with Ample Space for Hanging Clothes

Overhead Lights and Decorative Rope Lighting

Separate Switches for Reading Lights

Stereo Speakers Recessed in Headliner Tied into Salon Stereo

Teak Upper Storage Cabinets on Port and Starboard Sides of the Bed

(4) Large Storage Drawers Under the Bed

Teak Shelf

Foward Guest VIP Head

Mirrored Ceiling

Medicine Cabinet Picture Framed with Mirrored Doors

Amtico Teak & Holly Flooring

Granite Vanity Countertop with Teak Facing on Lower Vanity Cabinet

Reverse Cycle A/C and Heat

Exhaust Fan with Vent

Shower Light

Stall Shower – Fiberglass Molded

Sink with Grohe Faucet

Towel Bar and Ring

Vacuflush Head System

Port Guest Stateroom and Head

Temperature Controlled Reverse Cycle A/C and Heat

Upper and Lower Berths

Upgraded Twin Mattresses

Quilted Bedspreads

Carpeting

Hanging Locker, Cedar-Lined

Storage Drawers Located Under Hanging Locker

Stereo Speakers Recessed in Soffit - Tied into Salon Stereo

Sharp TV with JVC DVD Player

Overhead Lights and Decorative Rope Lighting

Teak Shelf

Mirrored Ceiling in Head

Medicine Cabinet in Head Pictured Framed with Mirrored Doors

Amtico Teak & Holly Flooring

Granite Vanity Countertop with Teak Facing on Lower Vanity Cabinet

Reverse Cycle A/C and Heat

Exhaust Fan with Vent

Vacuflush Head System

Shower Light

Stall Shower – Fiberglass Molded

Sink with Grohe Faucet

Towel Bar and Ring

Starboard Stateroom

Temperature Controlled Reverse Cycle A/C and Heat

Upper and Lower Berths

Storage Drawers Located Under Hanging Locker

Stereo Speakers Recessed in Soffit Tied into Salon Stereo

Upgraded Twin Mattresses

Quilted Bedspreads

Carpeting

Hanging Locker, Cedar-Lined

“Sole” TV’s

DVD Player

Overhead Lights and Decorative Rope Lighting

Crew Quarters and Head

Upgraded Orthopedic Mattresses

Upper & Lower Bunks

Custom Fabrics

Access Door to Engine Room

Teak Locker, Cedar Lined with Hanging Storage

Mirrored Lift-up Storage Cabinets Outboard of Bunks

(1) “Sole” TV and (1) 15” Flat Screen TV

DVD Player

Custom Wall Paper

Stall Shower – Fiberglass Molded

Amtico Teak and Holly Flooring

Mirrored Ceiling

Brass Shower & Faucet Fixtures, Towel Bars and Rings

Vacuflush Head System

Vanity Countertop with Storage Below

Deck Exterior

Bow Pulpit with Full Aluminum Bow Rail

Fresh Water Washdown on Bow Inside Anchor Locker

Rub Rail Paint Matches Gel Coat

Lewmar Hydraulic Windlass with 300' Rope and 50' Chain

(2) Hatches Center Line in Foredeck

Grab Rail Port and Starboard Along Salon Windows

Atlantic Blue Hull – Painted by Viking (2012)

Painted Top Side by Viking (2012)

Fresh Bottom (May 2015)

Cockpit

Custom Teak Deck, Covering Coaming Boards and Transom

Boarding Box, Fiberglass with Nonskid, Lift Up Top and Storage

Cable TV and Telephone Connections in Cabinet Under Starboard Gunwale

Phone Cable is CAT-5 to Accommodate Data Phone Systems

Dockside Electric Connection in Port and Starboard Cabinets

Dockside Water Connection with Pressure Reducing Valve

Electric Sliding Salon Door

Engine Room Access Hatch

Fusion Stereo Remote at Engine Room Entrance with IL Speakers (New 2014)

Extended Flybridge Overhang for Shade

Observation Mezzanine with Starboard Aft Facing Lounge Seating with Covered Cushions (New 2012)

Hinged Seats with Storage Under Mezzanine Seating Lounge Area

Tackle Cabinet with Pull-Out Drawers and Large Bait Freezers

Fresh Water Washdown with Hose Bib

(2) 12V Outlets Forward Under Coaming on each Side

Custom Teak Fighting Chair with Rocket Launcher Back on Offset Stainless Pedestal

Cockpit Camera on Underside of Aft Overhang

Reinforced Stainless Steel Cleats

Gaff Storage on Starboard Side

Electrical Inlet Box

Self-Bailing Cockpit with Large Scuppers

Sidelockers

Cockpit Misters

Recessed Refrigerated Chill Box Under-Mounted in Mezzanine Step

Gaskets for all Lids, Doors and Access Doors

(3) Clearing Rod Holders in each Cockpit Wing Launch with Grab Rails Above

Ladder to Flybridge; Powder-coated Snow White

Walk-Through Transom Door with Lift Gate

Transom Swim Steps

Transom-mounted Fishbox with Drain

Y-Valve for Fresh & Salt Water Washdowns

Eskimo Ice Machine with Discharge in Cockpit Sole (New 2012)

Livewell in Transom-mounted Fishbox with a Separate Head Hunter Stingray Pump

Release Marine No-bolt Rod Holders in Gunwales

Indirect Lighting

Additional Hose Bib and Pump for on Deck Tuna Tubes (New 2014)

Dual Thermostat for Cockpit Freezer

Stainless Steel Gas Springs for Fish Box, as well as Sole Port and Starboard Boxes

Dual Additional Cable Masters for 50 Amp Shore Power Cords Port and Starboard

Fish Box Macerator

Lazarette Hatch with Access to Steering, Trim Tabs and Drain Pumps

Hydraulic Outriggers

Outriggers Mounted on Flybridge

Upgraded Pump for Transom Livewell

(8) Underwater Lights (4) Out Transom and (4) Out Hull Bottom

Enclosed Flybridge

Spiral Staircase to Bridge

Single STIDD Helm Chair

Vizio 25' LED Flat Panel Television

Wet Bar in Port Aft Corner

Teak Cocktail Table

Subzero Under Counter Refrigeration

Wine Chiller (Frigidaire)

Windshield Defroster

Blinds

Forward Facing Companion Seats

Fixed Side and Aft Windows

Forward Control Station

Pod Style Aft Docking Station with Surface Mounted Controls

Large Under Helm Area for Easy Access and Added Storage

L-Shaped Lounge

Molded Fiberglass Seat on Aft Deck with Removable Cushions and Storage Beneath

Tempered Windshield, Curved and Laminated Safety Glass

Windshield Wipers, Electric with Intermittent Controls

Weatherproof Lockable Exterior Door

DDEC Trolling Valves

Surface Mounted Electronic Controls

Power Assist Steering

Fusion Stereo

Buell Air Horns

Recessed Miya Epoch Electric Teaser Reels; 24V

(8) Rod Rocker Launcher on Enclosed Bridge Aft Deck with Center Line Access to PBT Tower

single captains pedestal at aft control station

Electronics

Radar (1) FURUNO 8' Array 120 Mile Radar

Radar (2) FURUNO 6' Array 120 Mile NAVNET

FURUNO Autopilot

AIS FURUNO FA-150

(4) VEI Monitors

GPS FURUNO Black Box NAVNET 3D

Sirius Weather Module for NN3D

Wave Wi Fi Rogue Pro

Office Jet 8100 Pro Printer with Airpaint

VHF Icon Hailer in Cockpit (New2014)

Leviathan Computer System

Noble Tech Software

(3) Engine Room Cameras (1) Cockpit Camera

FURUNO RD 30

VHF ICOM M602 and M604

Fusion Stereo (Bluetooth) with JL Audio 10" Infinite Baffle Subwoofers one in Cockpit and one in Flybridge (New 2014)

Fish Finder – FURUNO FVC 1200L

6" Ritchie Compass

KVH SAT TV V7 Aft Station

VHF ICOM M604 Command Mic

FURUNO GPS NAVNET 12" MFD

Autopilot Control

Bow Thruster Control

Tower

ICOM M604 Command Mic

Bow Thruster Control

9" FURUNO NAVNET MFD

Tachometers

Engine Room

Chilled water AC system

Two MTU 16V2000 M91- 2030HP - complete 3000 hour service complete at approximately 2800 hours

Awlgrip engine room

Voltage stabilizer transformer

Additional 21.5 KW generator – New (2012)

1400 GPD watermaker with auto backflush

Fuel transfer system, 220V AC pump with 24VDC back-up

24V Fuel priming pumps

Engine room entrance gauges installed into fiberglass

Oil changing system plumbed to dockside insert

Awlgrip brass thru-hulls and sea strainers

alfa laval fuel polishing system

engine room cameras

Dual fuel filters painted snow white

Back up sea water pump for air conditioning system

Headhunter fresh water pump

Auxiliary DC Fresh Water Pump

Hydraulic “Emergency” Bilge Pump Manifold to Forward, Engine Room and Cockpit Bilges

Access Door to Crew Quarters Bow Thruster – Lewmar Hydraulic, Twin Five Blade in 12” Tube

Shelf Over Generator and Second Generator

Total of 3 Fuel Tanks for a Total of 3000 gallons 1500 Aft, 900 Mid, 600 Forward

Dual Power Steering Pumps on Port Engine

Power Assist Hydraulic Steering

Five-Bladed Nibral Propellers - Veem

Racor Dual Fuel/Water Separator Filters for Main Engines and Generators

(2) Aquamet High-Strength Stainless Steel Shafts

Structural Steel Engine Beds

Nibral Struts

Delta T Engine Room Ventilation System

Trim Tabs, Dual Piston with Center Tabs Recessed in Transom

30 Gallon Electric Water Heater

“Cruise Air” Chilled Water A/C System

Exclusions

Owner's personal property.

Исключения

При продаже яхты исключаются личные вещи владельца.

Отказ от ответственности

Компания предоставляет описание судна или яхты добросовестно, но не может гарантировать точность этой информации, а также не ручается за техническое состояние. Покупатель должен проинструктировать своих агентов или оценщиков исследовать представленную информацию более подробно, по собственному желанию. Продажа судна или яхты, изменение цены или снятие с продажи будет происходить без предварительного уведомления.

ФОТОГРАФИИ

Salon



Salon



Salon



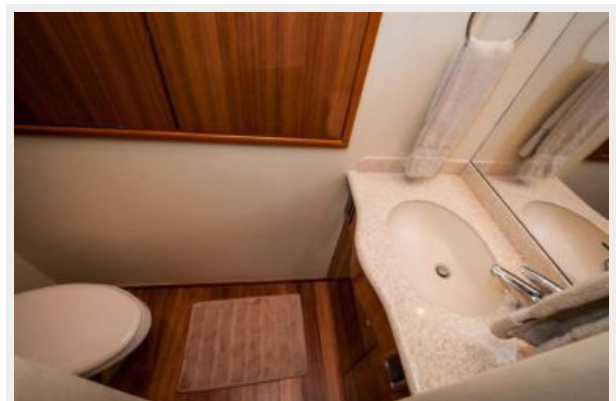
Salon Seating



Salon Seating



Salon Day Head



Dinette



Dinette



Galley



Galley



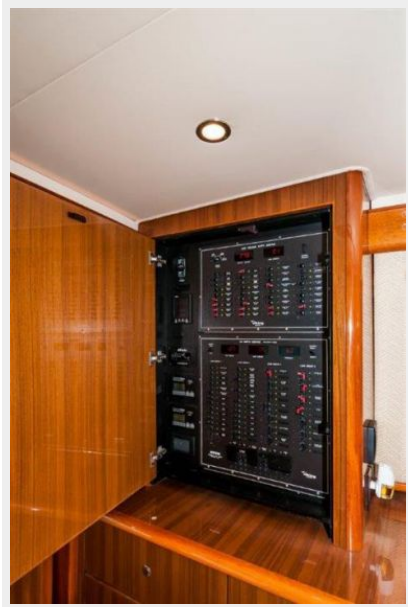
Galley



Sub Zeros



Electrical Panel



Master Stateroom



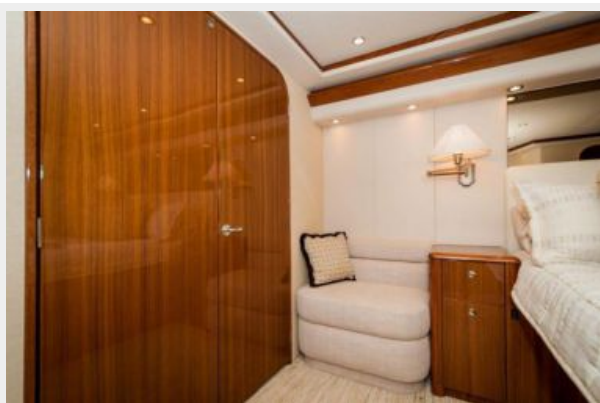
Master Stateroom



Master Stateroom



Master Stateroom



Master Stateroom



Master TV



Master Head



Forward Guest Head



Forward VIP Stateroom



Forward Guest Head



Forward Port Stateroom



5th Stateroom Starboard Mid



Crew's Quarters Aft



Crew's Head



Companionway



Laundry



Enclosed Bridge



Enclosed Bridge Seating



Enclosed Bridge TV



Flybridge Mezzanine



Auxiliary Controls



Palm Beach Tower



Cockpit



Cockpit



Cockpit



Cockpit



Mezzanine Seating



Fighting Chair with Rocket Launcher Back



Transom



Port Bow



Starboard Bow



Starboard Profile



Starboard Profile



Engine Room



Engine Room



Engine Room



Port Generator



Valve Covers



Transom



КОНТАКТЫ

Андрей Шестаков (Andrey Shestakov) – ведущий яхтенный брокер отдела продаж яхт и судов компании Shestakov Yacht Sales Inc. Официальный представитель Shestakov Yacht Sales Inc. для русскоговорящих клиентов в центральном офисе компании в Майами/Форт Лодердейл/Флорида/США.

Контактная информация

Email: andrey@shestakovyachtsales.com

Web: shestakovyachtsales.com

Телефоны

Краснодарский край: **+7(918)465-66-44**

США, Майами, Флорида: **+1(954)274-4435**

Время работы

Понедельник – Суббота: **9:00 - 21:00**
EDT

Воскресенье: **Закрето**

Адрес



Harbour Towne Marina, 850 NE 3rd St,
STE 213, Dania, FL 33004