

BELLE OF WASHINGTON — STARDUST



Builder: STARDUST

Year Built: 1993

Model: Cruiser

Price: PRICE ON APPLICATION

Location: United States

LOA: 75' 0" (22.86m)

Beam: 18' 0" (5.49m)

Cruise Speed: 6 Kts. (7 MPH)

Our experienced yacht broker, Andrey Shestakov, will help you choose and buy a yacht that best suits your needs Belle of Washington — STARDUST from our catalogue. Presently, at Shestakov Yacht Sales Inc., we have a wide variety of yachts available on our sale's list. We also work in close contact with all the big yacht manufacturers from all over the world.

If you would like to buy a yacht Belle of Washington — STARDUST or would like help answering any questions concerning purchasing, selling or chartering a yacht, please call +1(954)274-4435

TABLE OF CONTENTS

TABLE OF CONTENTS	2
SPECIFICATIONS	3
Overview	3
Basic Information	3
Dimensions	3
Speed, Capacities and Weight	3
Hull and Deck Information	3
Engine Information	4
DETAILED INFORMATION	5
Deck	5
Electrical	5
Electronics	5
Additional	5
Galley	6
Exclusions	6
Disclaimer	6
PHOTOS	7
CONTACTS	20
Contact details	20
Telephones	20
Office hours	20
Address	20

SPECIFICATIONS

Overview

The Belle of Washington is a custom built aluminum hull boat, constructed in 1993 by Stardust Cruisers in Monticello, Kentucky. This premier dinner cruise vessel, originally docked on Lake Cumberland in Kentucky, was brought to Historic Washington, NC and has been available for dinner and sunset cruises ever since. The Belle of Washington is certified by the U. S. Coast Guard and is fully equipped with all the Modern Amenities for a safe and comfortable cruise. This boat is being offered well below market value and she won't be on the market long. Call for full details and specs.

Basic Information

Category: Cruiser

Model Year: 1993

Year Built: 1993

Country: United States

Dimensions

LOA: 75' 0" (22.86m)

Beam: 18' 0" (5.49m)

Speed, Capacities and Weight

Cruise Speed: 6 Kts. (7 MPH)

Water Capacity: 100 Gallons

Fuel Capacity: 150 Gallons

Hull and Deck Information

Hull Material: Aluminum

Engine Information

Engines: 2

Manufacturer: Volvo Penta

Engine Type: I/O

Fuel Type: Diesel

DETAILED INFORMATION

Deck

- Aluminum Stairwell Leading to Upper Deck
- (3) Fixed Fire Fighting Hose Reels W/ 50' of Hose on Each
- Upper Deck Sun Shade w/ Lighting Underneath
- (4) Exterior Mounted Camera for Safety and Visibility While Docking
- Engine Room Access thru Aft Deck
- Bow Thruster Access thru Forward Deck
- Wesmar Bow Thruster

Electrical

- (2) 50 Amp 120v / 240v Shore Power
- (2) 50 Amp Shore Power Cords
- Kohler 31kw 120v / 240v Diesel Generator
- 110v Electrical System
- 12v / 24v Electrical System
- (3) Batteries
- Battery Selector Switches
- Pro Marnier Pro Sport Battery Charging System Eng. & Generator
- Charles Battery Charging System Bow Thruster

Electronics

- Furuno 36 Mile Radar
- Furuno Depth Finder
- Icom M-304 VHF Radio
- AM / FM / CD Stereo System with Speakers on Upper and Lower Decks
- Intercom System on Both Decks
- AM /FM Cassette Stereo System at Helm Station
- Remote Spotlight
- (2) Flat Screen TV's (One Forward Dining Room / One Aft Dining Room)
- Satellite TV and Phone

Additional

- Lower Dining Hall Seating for 48 Passenger
- Upper Deck Seating and Dining Area
- Trane Heating and Air Conditioning Unit for Lower Deck

- Duo Therm Dometic Roof Top Air Conditioning System for Bridge Deck Cabin
- Two Separate Head Compartments (One Port / One Starboard)
- Current US Coast Guard Certificate Valid to May 2016

Galley

- Full Size Side by Side Refrigerator Freezer
- 4 Burner Flat Top Stove
- Microwave
- Ice Maker
- Stainless Steel Sink w/ Hot and Cold Water
- Wet Bar w/ Stainless Steel Counter
- Storage Cabinets and Drawers above and Below Counters
- Intercom to Bridge Deck

Exclusions

Owner's personal belongings.

Disclaimer

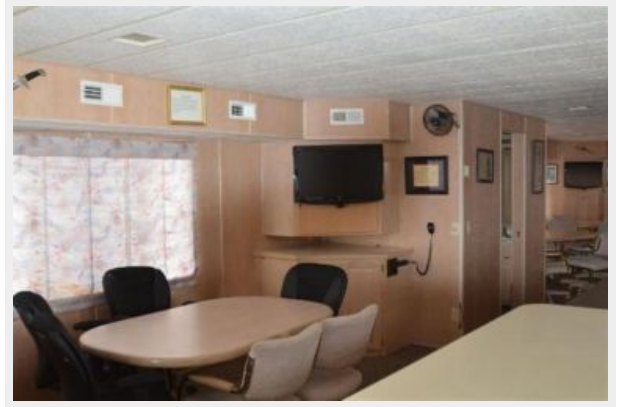
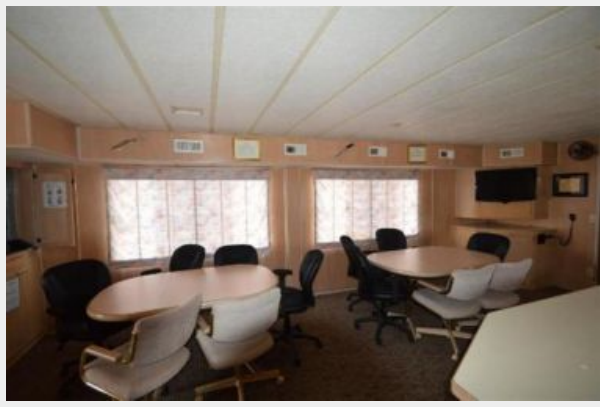
The Company offers the details of this vessel or yacht in good faith but cannot guarantee or warrant the accuracy of this information nor warrant the condition of the vessel. A buyer should instruct his representatives, agents, or his surveyors, to investigate such details as the buyer desires validated. This vessel or yacht is offered subject to prior sale, price change, or withdrawal without notice.

PHOTOS











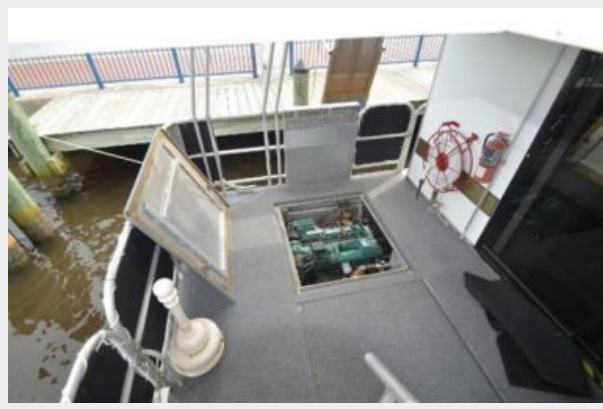
















CONTACTS

Andrey Shestakov, leading yacht broker of the sales department of Shestakov Yacht Sales Inc. Shestakov Yacht Sales Inc., the official representative of the Miami/Fort Lauderdale FL headquarters.

Contact details

Email: andrey@shestakovyachtsales.com

Web: shestakovyachtsales.com/en/

Telephones

USA: +1(954)274-4435

Office hours

Monday – Saturday: **9:00 - 21:00** EDT

Sunday: **closed**

Address



Harbour Towne Marina, 850 NE 3rd St,
STE 213, Dania, FL 33004