

IMAGINE — SEA RAY



Builder: [SEA RAY](#)

Year Built: 1998

Model: Cruiser

Price: PRICE ON APPLICATION

Location: United States

LOA: 40' 0" (12.19m)

Beam: 13' 10" (4.22m)

Max Draft: 3' 4" (1.02m)

Cruise Speed: 18 Kts. (21 MPH)

Max Speed: 24 Kts. (28 MPH)

Our experienced yacht broker, Andrey Shestakov, will help you choose and buy a yacht that best suits your needs **IMAGINE — SEA RAY** from our catalogue. Presently, at Shestakov Yacht Sales Inc., we have a wide variety of yachts available on our sale's list. We also work in close contact with all the big yacht manufacturers from all over the world.

If you would like to buy a yacht **IMAGINE — SEA RAY** or would like help answering any questions concerning purchasing, selling or chartering a yacht, please call **+1(954)274-4435**

TABLE OF CONTENTS

TABLE OF CONTENTS	2
SPECIFICATIONS	5
Overview	5
Basic Information	5
Dimensions	5
Speed, Capacities and Weight	5
Accommodations	6
Hull and Deck Information	6
Engine Information	6
DETAILED INFORMATION	7
Description	7
Galley	7
Electronics & Navigation	8
Electrical	8
Deck & Hull	8
Manufacturer Provided Description	9
Exclusions	9
Exclusions	9
Disclaimer	9
PHOTOS	11
Salon Settee	11
Salon Settee	11
Galley Fridge & TV	11
Galley	11
Salon Looking Forward	12
Forward Berth	12
Forward Head	12
Forward Berth	12

Forward Shower	13
Aft Cabin	13
Aft Head	13
Helm Station	13
Helm Console	14
Gauges	14
Depth Display	14
Gauges Tach	14
Radar Display	14
Cockpit et Bar	14
Helm Seats	15
Cockpit Table & Seating	15
Dinner Bell	15
Cockit Seating	15
AC Panel	16
Shore Panel	16
Breaker Panel	16
Stereo	16
Sea Ray 400 Emblem	17
Engine	17
Generator	17
Generator Hours	17
Ground Tackle	17
Radar Array	17
Starboard Profile	18
CONTACTS	19
Contact details	19
Telephones	19
Office hours	19

Address

19

SPECIFICATIONS

Overview

Whether for weekend excursions or extended cruising, the Sea Ray 400 Sundancer is the one. The distinctive styling begins with the 400 Sundancer's mid-cabin, raised-helm design. A fiberglass sport spoiler with overhead lighting, generous seating arrangement and portside wet bar make the cockpit an inviting place to pass time with friends.

IMAGINE was repowered in 2003 by twin 7.4-liter, 380hp MPI Horizon MerCruiser V-drives. The large cockpit area has bench seating on three sides and a portside wet bar with faucet and icemaker, making it ideal for large gatherings. A transom door leads to the wide swim platform. At the helm, a double companion seat keeps company with the adjustable captain's chair. The built-in French toe-rail and through-bolted stainless steel bow rail make passage to the foredeck sure and safe.

Basic Information

Category: Cruiser

Sub Category: Express

Model Year: 1998

Year Built: 1998

Country: United States

Vessel Top: Radar Arch and Bimini

Cockpit: Yes

Dimensions

LOA: 40' 0" (12.19m)

Beam: 13' 10" (4.22m)

Max Draft: 3' 4" (1.02m)

Speed, Capacities and Weight

Cruise Speed: 18 Kts. (21 MPH)

Max Speed: 24 Kts. (28 MPH)

Displacement: 22571 Pounds

Water Capacity: 100 Gallons

Holding Tank: 28 Gallons

Fuel Capacity: 330 Gallons

Accommodations

Total Cabins: 2

Total Heads: 2

Hull and Deck Information

Hull Material: Fiberglass

Hull Configuration: Modified V-Hull

Engine Information

Engines: 2

Manufacturer: Mercruiser

Model: 7.4L MPI Horizon

Fuel Type: Gas

DETAILED INFORMATION

Description

IMAGINE was re-powered in 2003 by twin 7.4-liter, 380-hp MPI Horizon MerCruiser V-drives.

Boarding from the swim step, a large seating arrangement with cushioned benches and a table offers a great place to entertain or enjoy the ride. Forward is the fully instrumented helm. To port of the helm is a sliding hatch that offers access down four steps to the main cabin and sleeping accommodations. Inside, the nicely equipped galley is to port, with a large dining settee to starboard.

Accommodations include a master stateroom forward that features a queen island berth, mirrored hanging locker with built in drawer storage, and mirrored storage locker. A screened overhead hatch lets in fresh air and light. A TV/VCR combo allows you to watch TV from the comfort of your berth.

An aft entertainment section with table converts easily into a private aft stateroom with a sliding bulkhead. Removable cushions fill in the U-settee making a double berth. There is also a small hanging locker for storage.

IMAGINE conveniently features two heads: A day head is located just forward of the aft seating area/berth and a full head with shower is located conveniently off the master stateroom. Each head has a waste level indicator for the VacuFlush toilet system.

- Large ultraleather settee for indoor dining, with hi-low adjustable table
- 14" Panasonic TV/VCR combo in main cabin
- 14" Panasonic TV/VCR combo in master stateroom
- Clarion Stereo w/cassette player
- Clarion six disc CD changer
- Cruisair heat and air conditioning
- High gloss cherry interior
- Corian countertops
- Aft U-lounge with removable table
- Storage cupboards

Galley

- 3-burner Kenyon electric cooktop
- Panasonic 1000 watt microwave oven
- Norcold refrigerator and freezer
- Integrated coffeemaker
- Large sink

- Corian counters
- Storage cupboards

Electronics & Navigation

- Raytheon 41XX radar
- Raytheon 601XX plotter
- Raytheon GPS
- Raytheon VHF
- NEW Raymarine Depth Gauge including New Transducer (4/2105)
- ACR remote spotlight
- Trim tabs
- Engine synchronizers
- Compass
- Clarion remote stereo tuner at helm

Electrical

- 8 kw Westerbeke generator set (1 100 hrs)
- 30 amp shore power cable

Deck & Hull

- Full "delta style" winter canvas enclosure
- U-shaped lounge seating with cushions and table
- Sink
- Storage lockers
- Helm bench with storage beneath
- Snap-in removable carpeting (new)
- Engine compartment hatch access
- Lofrans windlass
- Anchor
- Swim ladder
- Large storage locker accessed from the transom houses shore power cord and outlet
- Hot/cold freshwater shower at transom
- Chrome ship's bell
- Cable TV inlet
- Central vacuum system
- Sunbrella bimini top with boot
- Eisenglass wind screens
- Aft sunshade with camper back (2013)

Manufacturer Provided Description

Whether for weekend excursions or extended cruising, the Sea Ray 400 Sundancer is the one. The distinctive styling begins with the 400 Sundancer's mid-cabin, raised-helm design. A fiberglass sport spoiler with overhead lighting, generous seating arrangement and portside wet bar make the cockpit an inviting place to pass time with friends.

The 400 Sundancer is powered by twin 7.4-liter, 380-hp MPI Horizon MerCruiser V-drives. The large cockpit area has bench seating on three sides and a portside wet bar with faucet and icemaker, making it ideal for large gatherings. A transom door leads to the wide swim platform. At the helm, a double companion seat keeps company with the adjustable captain's chair. The built-in French toe-rail and through-bolted stainless steel bow rail make passage to the foredeck sure and safe.

Below, the salon area features a curved sofa, perfect for relaxing before dinner; add the fiberglass table and it's a perfect dining spot. Later, it becomes the perfect sleeping spot for overnight guests. With central heat, air conditioning, and TV/VCR this is your home away from home. The Sundancer berth, or mid-stateroom, is a conversation area during the day and converts to a double berth at night. In the master stateroom is a full-size pedestal bed and a private entertainment center with TV/VCR. Cedar-lined hanging lockers and port and starboard vanities with cabinets below provide plenty of storage. With access from the salon and the forward stateroom, the master head includes a VacuFlush toilet, a vanity with sink, and full stand-up fiberglass shower. The guest head features a VacuFlush toilet and vanity with sink.

Faux-granite countertops accent the full galley, featuring a full-size refrigerator - freezer, flush-mount three-burner electric stove and microwave, and convenience package with coffeemaker and blender.

Exclusions

All personal gear; loose items; galley gear; CD's; charts; fishing equipment; tools; spare parts; supplies & items not specifically listed on equipment list specifications sheet.

Exclusions

Owner's personal belongings.

Disclaimer

The Company offers the details of this vessel or yacht in good faith but cannot guarantee or warrant the accuracy of this information nor warrant the condition of the vessel. A buyer should instruct his representatives, agents, or his surveyors, to investigate such details as the buyer desires validated. This vessel or yacht is offered subject to prior sale, price change, or withdrawal

without notice.

PHOTOS

Salon Settee



Salon Settee



Galley



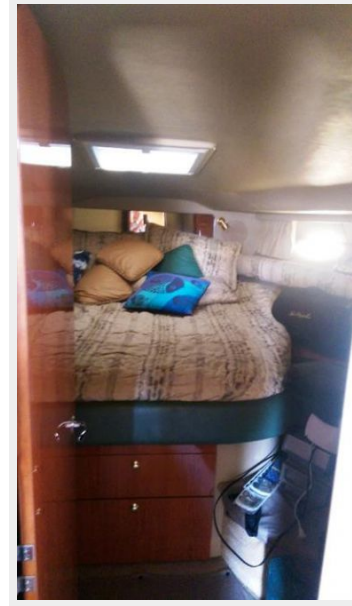
Galley Fridge & TV



Salon Looking Forward



Forward Berth



Forward Berth



Forward Head



Forward Shower



Aft Cabin



Aft Head



Helm Station



Helm Console



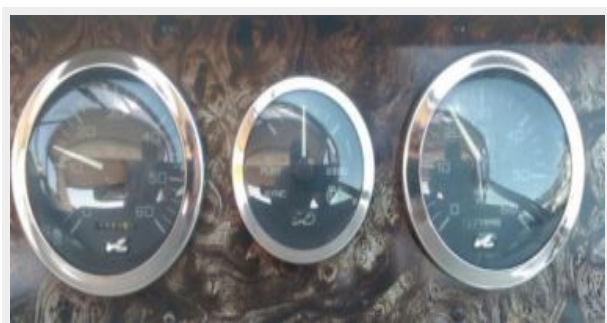
Gauges



Depth Display



Gauges Tach



Radar Display



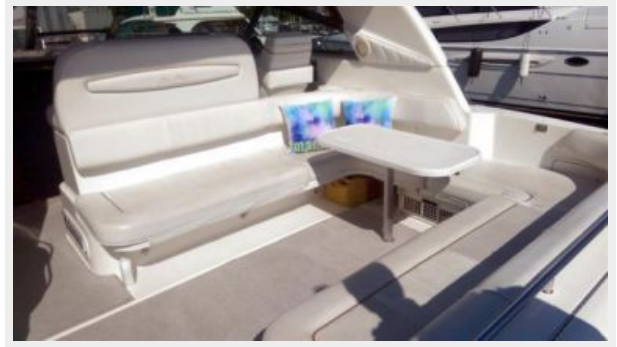
Cockpit et Bar



Helm Seats



Cockpit Table & Seating



Dinner Bell



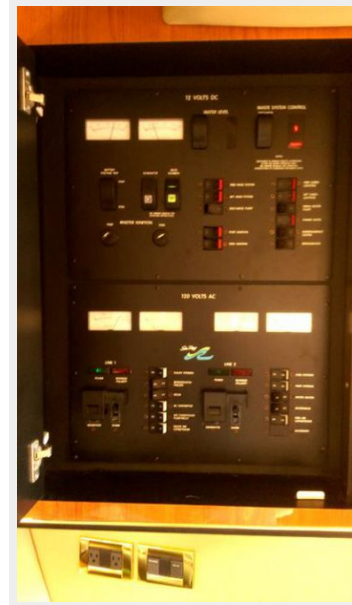
Cockit Seating



AC Panel



Shore Panel



Breaker Panel



Stereo



Sea Ray 400 Emblem



Engine



Generator



Generator Hours



Ground Tackle



Radar Array



Starboard Profile



CONTACTS

Andrey Shestakov, leading yacht broker of the sales department of Shestakov Yacht Sales Inc. Shestakov Yacht Sales Inc., the official representative of the Miami/Fort Lauderdale FL headquarters.

Contact details

Email: andrey@shestakovyachtsales.com

Web: shestakovyachtsales.com/en/

Telephones

USA: +1(954)274-4435

Office hours

Monday – Saturday: **9:00 - 21:00** EDT

Sunday: **closed**

Address



Harbour Towne Marina, 850 NE 3rd St,
STE 213, Dania, FL 33004