

## PANACEA — NOVATEC



**Судостроитель:** NOVATEC

**Год постройки:** 2002

**Модель:** Траулер

**Цена:** **ЦЕНА ЯХТЫ ПО ЗАПРОСУ**

**Местонахождение:** United States

**Длина общая:** 42' 0" (12.80m)

**Ширина:** 13' 9" (4.19m)

**Мин. осадка:** 3' 6" (1.07m)

**Макс. осадка:** 3' 6" (1.07m)

**Крейс. скорость:** 8 Kts. (9 MPH)

**Макс. скорость:** 11 Kts. (13 MPH)

Купить Panacea — NOVATEC а также выбрать подходящую вам яхту из нашего каталога яхт вам поможет опытный яхтенный брокер Андрей Шестаков. На сегодняшний день компания Shestakov Yacht Sales Inc. имеет большое количество яхт в собственном списке продаж, а также тесно сотрудничает со всеми крупными яхтенными производителями по всему миру.

Для того чтобы купить яхту Panacea — NOVATEC а также проконсультироваться по любому вопросу связанному с покупкой, продажей, чартером яхт позвоните по телефону **+7(918)465-66-44**.

# ОГЛАВЛЕНИЕ

---

ОГЛАВЛЕНИЕ	2
ХАРАКТЕРИСТИКИ	5
Обзор	5
Основная информация	5
Размеры	5
Скорость, вместимость и масса	5
Размещение	6
Корпус и палуба	6
Информация о двигателе	6
ПОДРОБНОЕ ОПИСАНИЕ	7
42' Novatec Main Salon	7
42' Novatec Galley	7
42' Novatec VIP Forward Stateroom	7
42' Novatec VIP Head	7
42' Novatec Aft Master Stateroom	7
42' Novatec Electrical	7
42' Novatec Electronics	8
42' Novatec Deck and Hull	9
42' Novatec Aft Deck and Dinghy	9
42' Novatec Foredeck	10
42' Novatec Flybridge and Upper Deck	10
42' Novatec Engine Room	10
42' Novatec Tanks and Plumbing	11
42' Novatec Construction	12
42' Novatec Disclaimer	13
Исключения	13
Отказ от ответственности	13
ФОТОГРАФИИ	14

42' Novatec starboard forward profile	14
42' Novatec starboard profile	14
42' Novatec at anchor photo1	14
42' Novatec at anchor photo2	14
42' Novatec anchor windlass	14
42' Novatec anchor	14
42' Novatec foredeck	15
42' Novatec foredeck aft	15
42' Novatec port side deck	15
42' Novatec starboard deck access	15
42' Novatec starboard side deck	16
42' Novatec flybridge forward	16
42' Novatec flybridge helm photo1	16
42' Novatec flybridge helm photo2	16
42' Novatec flybridge helmseat	16
42' Novatec flybridge aft	16
42' Novatec flybridge cover	17
42' Novatec sundeck forward	17
42' Novatec sundeck port forward	17
42' Novatec sundeck	17
42' Novatec sundeck etched glass	17
42' Novatec transom	17
42' Novatec tender photo1	18
42' Novatec tender photo2	18
42' Novatec tender outboard	18
42' Novatec salon aft	18
42' Novatec salon settee	18
42' Novatec salon starboard seating	18
42' Novatec lower helm	19

42' Novatec galley photo	19
42' Novatec galley cabinetry	19
42' Novatec galley sink	19
42' Novatec galley stove	20
42' Novatec galley refrigerator	20
42' Novatec master stateroom photo2	20
42' Novatec master stateroom photo1	20
42' Novatec master stateroom port	20
42' Novatec master stateroom starboard	20
42' Novatec master stateroom head	21
42' Novatec master stateroom shower	21
42' Novatec guest stateroom starboard	21
42' Novatec guest stateroom	21
42' Novatec guest stateroom head	22
42' Novatec guest stateroom port	22
42' Novatec port main engine	22
42' Novatec starboard main engine	22
42' Novatec electrical panel	23
42' Novatec generator control panel	23
<b>КОНТАКТЫ</b>	<b>24</b>
Контактная информация	24
Телефоны	24
Время работы	24
Адрес	24

# ХАРАКТЕРИСТИКИ

## Обзор

A luxurious and spacious yacht with two queen cabins, one forward and one aft for privacy, and two complete heads. The gourmet galley is down and forward of the main salon. Generous aft deck has a sink and ice maker for ease of entertaining, and wide side decks allow effortless access to bow. A 3' swim platform makes it easy to come aboard from the water or dinghy. Panacea is a perfect Great Loop candidate.

## Основная информация

<b>Тип судна:</b> Траулер	<b>Подкатегория:</b> Aft Cabin
<b>Модельный год:</b> 2002	<b>Год постройки:</b> 2002
<b>Страна:</b> United States	<b>Верх:</b> Bimini Top
<b>Открытая палуба мостика:</b> Да	

## Размеры

<b>Длина общая:</b> 42' 0" (12.80m)	<b>Ширина:</b> 13' 9" (4.19m)
<b>Мин. осадка:</b> 3' 6" (1.07m)	<b>Макс. осадка:</b> 3' 6" (1.07m)

## Скорость, вместимость и масса

<b>Крейс. скорость:</b> 8 Kts. (9 MPH)	<b>Макс. скорость:</b> 11 Kts. (13 MPH)
<b>Водоизмещение:</b> 25000 Pounds	<b>Вместимость воды:</b> 200 Gallons
<b>Объем топливного бака:</b> 500 Gallons	

## Размещение

---

**Всего кают:** 2

**Всего коек:** 3

**Спальные места:** 5

**Всего ком. состава:** 2

## Корпус и палуба

---

**Материал корпуса:** Fiberglass

**Цвет корпуса:** White

## Информация о двигателе

---

**Двигатели:** 2

**Производитель:** Cummins

**Модель:** 6BT5.9M

**Тип двигателя:** Inboard

**Тип топлива:** Diesel

---

## ПОДРОБНОЕ ОПИСАНИЕ

---

### 42' Novatec Main Salon

---

Lower steering station forward and to starboard. Door to starboard side deck at helm station. L-shaped settee dinette on starboard lowers to make a double berth; two salon chairs to port. TV, tinted windows with screens, and soft indirect lighting.

### 42' Novatec Galley

---

Aft and to starboard of the VIP cabin. Corian tpe counter tops, 2 deep stainless steel sinks. Hot and cold pressure water. Abundant overhead lockers. Norcold refrigerator/freezer, replaced in 2014, runs off AC or DC. Princess 3 burner electric stove, spice rack, shelf w/fiddle rail, opening porthole.

### 42' Novatec VIP Forward Stateroom

---

Centerline walkaround queen bed. Access foward to the anchor rode locker. Shelves port and starboard. Hanging locker aft to starboard with automatic light. Four drawers and extra storage under the bed. Hatch over the bed, Hood stainless steel ports, port and starboard.

### 42' Novatec VIP Head

---

Mirrored ceiling adds light and sense of size. Molded sink and counter top, vanity mirror, hot and cold pressure water, shower with curtain & teak grate. Fresh water Raritan Electro Scan waste treatment system, 2013

### 42' Novatec Aft Master Stateroom

---

Centerline walk-around queen bed, abundant shelves, lockers and drawers port and starboard. Mirrors port, starboard, and aft. Two hanging lockers forward and to port. Two large hatches in the transom. Head with separate stall shower forward to starboard. Teak floor and mirrored ceiling. Molded sink and counter top. Hot and cold pressurized water. Stainless steel opening ports and indirect lighting.

### 42' Novatec Electrical

---

Cruise Air marine a/c (46k BTU) 3 zone (2)16K BTU, (1) 10K BTU

12v lights

110v outlets

115v AC elec system

12v DC elec system

Electrical bonding system

Onan 8kw generator in soundshield w/117 hours

LED lighting through out

New battery charger 2014

Galvanic isolator 2014

Battery condition gauge

(2) 8D Marine Batteries (NEW 2012)

(1) 4D Marine Battery (NEW 2012)

30 amp 50' dockside elec cables

Newmar breaker panel

---

## 42' Novatec Electronics

---

### *"All new in 2013"*

GPSMAP8212 MFD chart plotter - upper helm

GRID remote input device for 8212

GPSMAP8208 MFD chart plotter - lower helm

GSD24 sonar module

GHP20 auto pilot with SmartPump

GMR404xHD radar

IC-M504 VHF marine transceiver - upper helm

HM162 remote control microphone - lower helm

Visio Smart TV



---

## 42' Novatec Deck and Hull

---

Bottom peeled, barrier coat and 2 coats of bottom paint (2013)

Replaced sea cocks on both engines and gen set thru hulls

Port & starboard-side boarding gates in rails and transom boarding

Non-skid aft, side, fore & upper decks - white with waterway and drainage gutters

Custom welded continuous stainless steel handrail around the main deck w/lower lifeline.

Mooring chocks & cleats port & starboard - (4) each side

Molded stairwell from aft deck to upper deck with non-skid treads

Trim Tabs

---

## 42' Novatec Aft Deck and Dinghy

---

Molded cabinet fresh water basin & ice maker

Hot & cold fresh water shower attachment at transom

AB Lammina 9.5AL with locker aluminium bottom dinghy, new 2014

Weaver flip up dinghy mount

Folding swim ladder

Stainless side stanchions

Fiberglass side skirt

3' wide FRP swim platform

AC & DC electrical outlets 110V/220V (waterproof w/GFI)

Hardtop w/stainless steel supports

Full isinglass enclosure (2013)

Magma Propane BBQ w/Custom Mount

Dock Pressure Water Fill

Port & starboard boarding gates

Fiberglass radar arch

Coast Guard Safety Package

---

## 42' Novatec Foredeck

---

Vetus Alex III anchor windlass 12VDC, dual direction, (2) station control, overload protection

45 lb Manson Supreme anchor new 2014

Opening hatch to forward state room

---

## 42' Novatec Flybridge and Upper Deck

---

Helm console on centerline with full engine instrumentation

Morse engine controls

Hynautic Dual Steering System Pump with 30" diameter Destroyer Type ss wheel

Molded FRP Arch with internal PVC wire conduit and lighting

Stainless steel railings

Flybridge tinted windscreen

Sunbrella Navy bimini top with isinglass enclosure (new 2013)

Molded seating with stowage

Custom cushions

Helm Cover

110V and 12V Electrical Plugs

---

## 42' Novatec Engine Room

---

Halon Fire Buoy System

Twin Cummins 6BT5.9-M diesel engines, rated 220 BHP.

Fuel consumption approximately 3.5 gal/hr at 1400 rpm

New Exhaust Risers 2008

Hurth Twin Disc Marine reverse/reduction gear, 2.5:1 ratio

Aquamet 22 propeller shafts – 2 ¼” diameter

3 blade bronze propellers, true pitch and balanced 2014

PSS dripless stuffing box and cutlass bearings replaced 2014, both engines

Both engines aligned, 2014

Reverso oil change system with 3 ports (2014)

Engine temperature alarms

Bilge blowers

High water alarm in engine room bilge

Engine hour meters

Engine room sound insulation

Racor fuel filters

Racor T-handle change filter indicators

Muffled wet exhaust system with transom exit

Morse cable engine control system

Bronze sea-cocks and basket filter sea strainers on all intake thru hulls

Oil pressure alarms

Rudder/Synchroniser indicator

Fresh water cooling systems (main engines & generator)

Raw water sea strainer

---

## 42' Novatec Tanks and Plumbing

---

2 steel fuel tanks in engine room (250 gallons each)

200 US gallon stainless steel fresh water tank under fwd berth

Stainless steel fresh water tank under galley sole (50 US gallon)

Raritan Electro Scan waste treatment system, 2013

Clean-outs and shut-off valves at all tanks

Sight Gauges on Fuel Tanks

Stainless steel fuel supply and return manifolds

Dual Racor 900 max fuel filters

Racor 500R fuel filter for generator

Rule 12VDC automatic bilge pumps

Full pressure water system for fresh water – 12VDC pressure pump with accumulator tank

11 gallon Seaward stainless steel water heater

Whale System color-coded piping Individual self-contained 12VDC shower & air conditioning condensation sumps

Auto/manual electric bilge pumps

Plumbed for watermaker

---

## 42' Novatec Construction

---

Hand laminated fiberglass reinforced plastic hull, solid laminate bottom, topsides, outer laminates vinylester, inner laminates polyester

Hand laminated decks & house - Balsa Cored

Hull to deck mechanically fastened and secondary bonded

Overlapping (doubled) laminations at chine & keel

Solid laminate backing plates at hardware attachments

Stitch-Mat fiberglass fabrics - 0/90 and +/-45 per laminates schedules - hull, decks, superstructures

Balsa Core main structural bulkheads with stress-relief pads at hull and high-strength bonding laminates

(4) full length cored FRP Longitudinal girders in the hull bottom with local transverse floors

Molded upper & lower hull guard rails with solid 1 1/4" stainless steel oval rubbing strips

Full-length molded rub rail with 1 1/4" stainless steel oval rub strips at sheerline

---

## 42' Novatec Disclaimer

---

The Company offers the details of this vessel in good faith but cannot guarantee or warrant the accuracy of this information nor warrant the condition of the vessel. A buyer should instruct his agents, or his surveyors, to investigate such details as the buyer desires validated. This vessel is offered subject to prior sale, price change, or withdrawal without notice.

---

## Исключения

---

При продаже яхты исключаются личные вещи владельца.

---

## Отказ от ответственности

---

Компания предоставляет описание судна или яхты добросовестно, но не может гарантировать точность этой информации, а также не ручается за техническое состояние. Покупатель должен проинструктировать своих агентов или оценщиков исследовать представленную информацию более подробно, по собственному желанию. Продажа судна или яхты, изменение цены или снятие с продажи будет происходить без предварительного уведомления.

# ФОТОГРАФИИ

**42' Novatec starboard profile**



**42' Novatec starboard forward profile**



**42' Novatec at anchor photo1**



**42' Novatec at anchor photo2**



**42' Novatec anchor windlass**



**42' Novatec anchor**



**42' Novatec foredeck**



**42' Novatec foredeck aft**



**42' Novatec port side deck**



**42' Novatec starboard deck access**



**42' Novatec starboard side deck**



**42' Novatec flybridge forward**



**42' Novatec flybridge helm photo1**



**42' Novatec flybridge helm photo2**



**42' Novatec flybridge helmseat**



**42' Novatec flybridge aft**





42' Novatec flybridge cover



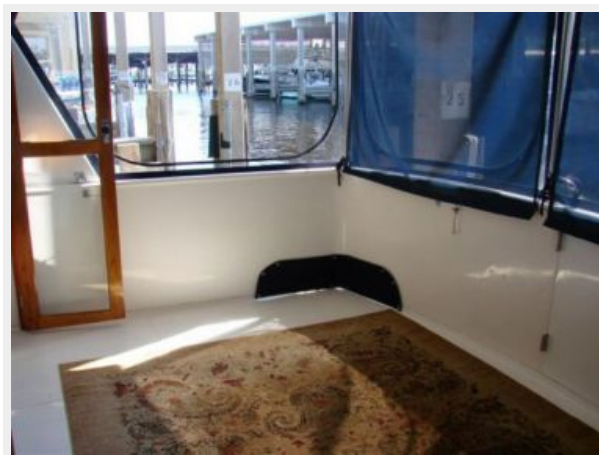
42' Novatec sundeck forward



42' Novatec sundeck port forward



42' Novatec sundeck



42' Novatec sundeck etched glass



42' Novatec transom



42' Novatec tender photo1



42' Novatec tender photo2



42' Novatec tender outboard



42' Novatec salon aft



42' Novatec salon settee



42' Novatec salon starboard seating



**42' Novatec lower helm**



**42' Novatec galley photo**



**42' Novatec galley cabinetry**



**42' Novatec galley sink**



**42' Novatec galley stove**



**42' Novatec galley refrigerator**



**42' Novatec master stateroom photo1**



**42' Novatec master stateroom photo2**



**42' Novatec master stateroom port**



**42' Novatec master stateroom starboard**



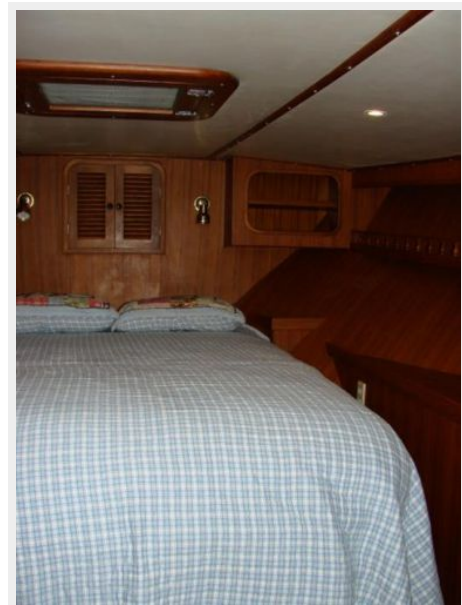
**42' Novatec master stateroom head**



**42' Novatec master stateroom shower**



**42' Novatec guest stateroom starboard**



**42' Novatec guest stateroom**



42' Novatec guest stateroom port



42' Novatec guest stateroom head



42' Novatec port main engine



42' Novatec starboard main engine



### 42' Novatec electrical panel



### 42' Novatec generator control panel



# КОНТАКТЫ

Андрей Шестаков (Andrey Shestakov) – ведущий яхтенный брокер отдела продаж яхт и судов компании Shestakov Yacht Sales Inc. Официальный представитель Shestakov Yacht Sales Inc. для русскоговорящих клиентов в центральном офисе компании в Майами/Форт Лодердейл/Флорида/США.

## Контактная информация

Email: [andrey@shestakovyachtsales.com](mailto:andrey@shestakovyachtsales.com)

Web: [shestakovyachtsales.com](http://shestakovyachtsales.com)

## Телефоны

Краснодарский край: **+7(918)465-66-44**

США, Майами, Флорида: **+1(954)274-4435**

## Время работы

Понедельник – Суббота: **9:00 - 21:00**  
EDT

Воскресенье: **Закрито**

## Адрес



Harbour Towne Marina, 850 NE 3rd St,  
STE 213, Dania, FL 33004