

## PRECIOUS LADY — SILVERTON



**Builder:** SILVERTON

**LOA:** 39' 0" (11.89m)

**Year Built:** 1999

**Model:** Cruiser

**Price:** PRICE ON APPLICATION

**Location:** United States

Our experienced yacht broker, Andrey Shestakov, will help you choose and buy a yacht that best suits your needs **PRECIOUS LADY — SILVERTON** from our catalogue. Presently, at Shestakov Yacht Sales Inc., we have a wide variety of yachts available on our sale's list. We also work in close contact with all the big yacht manufacturers from all over the world.

If you would like to buy a yacht **PRECIOUS LADY — SILVERTON** or would like help answering any questions concerning purchasing, selling or chartering a yacht, please call **+1(954)274-4435**

# TABLE OF CONTENTS

TABLE OF CONTENTS	2
SPECIFICATIONS	5
Basic Information	5
Dimensions	5
Accommodations	5
Hull and Deck Information	5
Engine Information	5
DETAILED INFORMATION	6
VESSEL WALKTHROUGH	6
EXCLUSIONS	9
Exclusions	9
Disclaimer	9
PHOTOS	11
Bow Looking Aft	11
Starboard Bow View	11
Salon Port	11
Stairs Starboard	11
Stairs to Fore Deck Starboard	12
Aft Deck	12
Stern	12
Stern	12
Flybridge Helm	12
Flybridge Helm	12
Flybridge	13
Flybridge Seating	13
Aft Deck	13
Flybridge Seating Forward	13
Aft Deck	13

Salon Dinette	13
Salon Starboard	14
Galley VIP & VIP Head	14
Galley	14
Salon Port	14
Salon Galley Looking Aft	14
Salon	14
Deck Stairs to Swim Platform	15
Master Stateroom	15
Master Head	15
Master Stateroom	15
Master Head	16
VIP Berth	16
Master Stateroom Entrance	16
VIP Port	16
VIP Starboard	16
Master Stateroom Port	16
VIP Head	17
VIP Head	17
Engine Room	17
Engine Port Aft	17
Engine Port Forward	17
Engine eoom	17
Engine Starboard	18
Engine Starboard	18
Generator Room	18
Gen Set	18
Generator Room	18
CONTACTS	19

---

Contact details	19
Telephones	19
Office hours	19
Address	19

---

# SPECIFICATIONS

---

## Basic Information

---

**Category:** Cruiser

**Model Year:** 2000

**Year Built:** 1999

**Country:** United States

**Fly Bridge:** Yes

## Dimensions

---

**LOA:** 39' 0" (11.89m)

## Accommodations

---

**Total Cabins:** 2

## Hull and Deck Information

---

**Hull Material:** Fiberglass

## Engine Information

---

**Manufacturer:** Caterpillar

---

# DETAILED INFORMATION

---

## VESSEL WALKTHROUGH

---

Boarding can be done quite easily whether you are on a floating dock or fixed. The over-sized swim platform, in addition to being water sports central, has an easily transited stairwell leading up to the expansive, hard top covered and weather protected aft deck. You also have the option of boarding directly to the aft deck on either side. Once aboard, the spacious aft deck is perfectly suited to sunset cocktails, morning coffee, alfresco dining or even music and dancing. In addition to being all of these wonderful things she is the centralized location that enables easy transit to any area aboard the yacht. Quick and easy access is provided on the starboard side up to the fly bridge which is low profile. It offers great sight lines and ample seating. A smartly designed exterior stairwell on either side leads directly to the foredeck. This unique set up makes line handling a breeze for docking situations. This convenient arrangement also leads to the bow sun pad area and anchor windlass tackle.

Port side of the aft deck is a sliding door that opens up to the main salon. Down a few stairs you find a spacious, comfortable and social arrangement. Audio and video components are right there to port. The starboard side of the salon features a plush convertible sofa. Port side fwd is a nice dinette area and across from that on the starboard side is the full service galley. Fwd and below of this area is the VIP guest accommodations. There is a full size private head to accompany the VIP stateroom. Aft of the main salon is the private master stateroom and en suite head. She features an island queen berth, hanging locker, ample storage and natural light.

## EQUIPMENT AND FEATURES

### Deck and Aft Deck

- Over-sized swim platform with forward shower, SS ladder and outboard motor bracket
- Underwater lights
- Stairs to aft deck
- Aft deck hard top and full enclosure
- Aft deck weather boards
- Dual boarding doors
- Wet bar
- Ice maker
- Easy access to bridge

- 
- Salon sliding door
  - Stairs from bridge to fore deck
  - Sun pad
  - Fender holders
  - SS bow rails
  - Bow pulpit w anchor roller, Delta anchor
  - Anchor windlass system with foot pedal controls and helm controls

### **Salon**

- Cherry wood interior
- L shaped ultra leather convertible sofa
- Flat screen TV with entertainment center
- Wine chiller
- New carpet 9 /13
- Great natural light and large windows
- Mini blinds
- Coffee table and 2 ottomans
- Ample storage

### **Galley**

- 3 burner cook top
- REAL oven (not micro convection)
- Microwave oven
- Refridgerator freezer 12v /110
- Cherry cabinetry and drawers
- 110 outlets for appliances
- Dinette seating
- Corian counter top

- Wood flooring

### **Master Stateroom**

- Island queen berth w custom inner spring mattress
- Cherry wood drawers, cabinets and hanging locker
- Ample storage
- En suite head with port holes for air and light if desired
- Large window on aft wall for natural light
- Privacy door
- Flat screen TV
- Reading lights

### **VIP Stateroom**

- Athwartships double berth w custom innerspring mattress
- Ample storage
- Dual cedar lined hanging lockers
- En suite head
- Reading lights

### **Flybridge and Electronics**

- Great visibility
- Easy access to fore deck for line haling, sun lounging and anchor duties
- Tons of social seating
- Bimini top w full enclosure
- Garmin GPS
- Garmin depth sounder
- Raytheon auto pilot
- Raytheon VHF radio
- Electric air horn



- Richie compass

## **Mechanical**

- Twin CAT 3116 350 hp ea approx 900 hours 5/15
- 1000 hour service completed 7 /13
- 8kw Kohler gen set 1100 hours also full service 7/13
- Electric bow thruster
- Oil change system
- Battery charger
- Engine synchronizer
- Trim tabs
- Racor fuel filters
- Hydraulic steering
- Auto fire suppression system
- 3 auto bilge pumps
- ZF transmissions
- All bilge and mechanical spaces steam cleaned and painted 8/13

## **EXCLUSIONS**

---

Owner's personal belongings, tools and coffee maker are excluded from sale.

## **Exclusions**

---

Owner's personal belongings.

## **Disclaimer**

---

The Company offers the details of this vessel or yacht in good faith but cannot guarantee or warrant the accuracy of this information nor warrant the condition of the vessel. A buyer should instruct his representatives, agents, or his surveyors, to investigate such details as the buyer desires validated. This vessel or yacht is offered subject to prior sale, price change, or withdrawal

without notice.

# PHOTOS

**Bow Looking Aft**



**Starboard Bow View**



**Salon Port**



**Stairs Starboard**



**Stairs to Fore Deck Starboard**



**Aft Deck**



**Stern**



**Stern**



**Flybridge Helm**



**Flybridge Helm**



**Flybridge**



**Flybridge Seating**



**Aft Deck**



**Flybridge Seating Forward**



**Aft Deck**



**Salon Dinette**



**Salon Starboard**



**Galley VIP & VIP Head**



**Galley**



**Salon Port**



**Salon Galley Looking Aft**



**Salon**



**Deck Stairs to Swim Platform**



**Master Stateroom**



**Master Stateroom**



**Master Head**



**Master Head**



**VIP Berth**



**Master Stateroom Entrance**



**VIP Port**



**VIP Starboard**



**Master Stateroom Port**





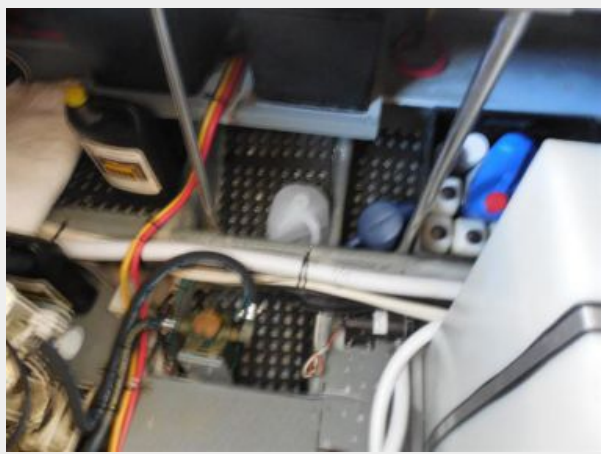
VIP Head



VIP Head



Engine Room



Engine Port Aft



Engine Port Forward



Engine room



**Engine Starboard**



**Engine Starboard**



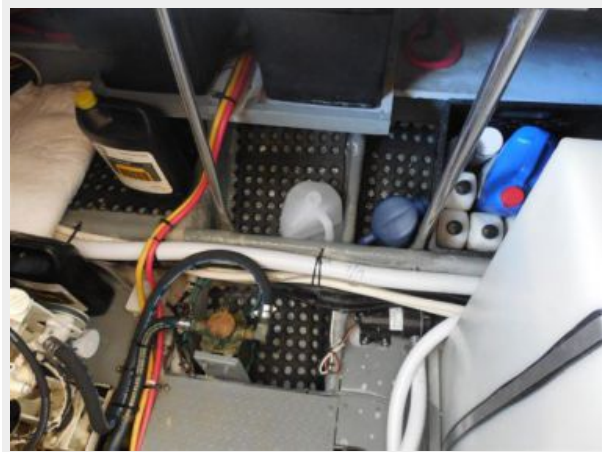
**Generator Room**



**Gen Set**



**Generator Room**



# CONTACTS

---

Andrey Shestakov, leading yacht broker of the sales department of Shestakov Yacht Sales Inc. Shestakov Yacht Sales Inc., the official representative of the Miami/Fort Lauderdale FL headquarters.

## Contact details

---

Email: [andrey@shestakovyachtsales.com](mailto:andrey@shestakovyachtsales.com)

Web: [shestakovyachtsales.com/en/](http://shestakovyachtsales.com/en/)

## Telephones

---

USA: +1(954)274-4435

## Office hours

---

Monday – Saturday: **9:00 - 21:00** EDT

Sunday: **closed**

## Address

---



Harbour Towne Marina, 850 NE 3rd St,  
STE 213, Dania, FL 33004