

58 SEA RAY — SEA RAY



Судостроитель: SEA RAY

Год постройки: 2006

Модель: Моторная яхта

Цена: **ЦЕНА ЯХТЫ ПО ЗАПРОСУ**

Местонахождение: United States

Длина общая: 58' 0" (17.68m)

Ширина: 16' 0" (4.88m)

Макс. осадка: 4' 3" (1.30m)

Купить 58 Sea Ray — SEA RAY а также выбрать подходящую вам яхту из нашего каталога яхт вам поможет опытный яхтенный брокер Андрей Шестаков. На сегодняшний день компания Shestakov Yacht Sales Inc. имеет большое количество яхт в собственном списке продаж, а также тесно сотрудничает со всеми крупными яхтенными производителями по всему миру.

Для того чтобы купить яхту 58 Sea Ray — SEA RAY а также проконсультироваться по любому вопросу связанному с покупкой, продажей, чартером яхт позвоните по телефону **+7(918)465-66-44**.

ОГЛАВЛЕНИЕ

ОГЛАВЛЕНИЕ	2
ХАРАКТЕРИСТИКИ	3
Обзор	3
Основная информация	10
Размеры	10
Скорость, вместимость и масса	10
Размещение	10
Корпус и палуба	10
Информация о двигателе	10
ФОТОГРАФИИ	11
КОНТАКТЫ	31
Контактная информация	31
Телефоны	31
Время работы	31
Адрес	31

ХАРАКТЕРИСТИКИ

Обзор

Specs Builder: Sea Ray **Dimensions** LOA: 58 ft 0 in Beam: 16 ft 0 in Maximum Draft: 4 ft 3 in
Engines Total Power: 1800 HP Engine 1: Engine Brand: MAN Year Built: 2006 Engine Model: CRM V-8 DIESEL Engine Type: Inboard Engine/Fuel Type: Diesel Engine Hours: 1000 Engine Power: 900 HP Engine 2: Engine Brand: MAN Year Built: 2006 Engine Model: CRM V-8 DIESEL Engine Type: Inboard Engine/Fuel Type: Diesel Engine Hours: 1000 Engine Power: 900 HP

Dimensions

LOA: 58' Beam: 16' Displacement: 51500

Draft: 4'3"

Engines

Engine(s): MAN Engine(s) HP: 900 Engine Model: 900CRMV-8

Hours: 1000 Cruising Speed: 26

Tanks Fuel: 700 Fresh Water: 150 Holding: 68

HELM AND ELECTRONICS:

- Great helm area with 2 large helm seats and overhead electronics box
- Navigation type 2 with full charts
- Raymarine E-120 Radar Chart, Raymarine Autopilot
- 2x MAN MMDS-CLC 6.3 Engine Monitors
- Raymarine VHF
- Vetus Bow Thruster
- Rudder Angle Indicator
- Cockpit A/C
- Bridge Stereo
- Large storage area
- Drawer for charts
- Helm offers great visibility forward and aft
- Large bench seat behind helm seat with great storage & seating

MASTER STATEROOM

The master is full beam with an athwartship bed that you can easily access from 3 sides(easy to make) there are built-in nightstands with drawers on either side of the bed. The aft bulkhead is mirrored and there are large port lights in the hull giving the stateroom a very large feel.

- Queen size bed with innerspring mattress, pillows, sheets, coordinated spread and carpet storage below with a gas assisted hatch
- Corian counter tops

- Privacy door with full length bezeled mirror
- Hanging locker Maple lined with light
- Stereo, Bose Acoustimass with surround sound Jewel Cube speakers
- Dresser with drawers and lift top vanity
- Storage locker Maple lined with adjustable shelves
- Toshiba LCD Flatscreen TV
- DVD/CD/VCR unit with remote

MASTER HEAD

- Satin Finish Interior
- Access direct from stateroom with privacy door
- Wood flooring
- Stainless steel elliptical handrails
- Large Vacu flush head
- 24 Volt power vent
- Shower with seat shower wand and acrylic door
- Large Mirrored medicine chest
- Vanity with Corian counter top
- Grohe faucet and Stainless undermount sink

VIP STATEROOM

- Queen size bed with innerspring mattress
- Pillows, sheets and coordinated spread
- Carpeted storage beneath bed with gas assisted hatch
- Great amount of drawer storage
- Maple lined hanging locker with light
- Mirrored forward bulkhead
- Storage cabinet with drawes port side
- Overhead opening hatch with retractable sun and bug screens
- Toshiba Flatscreen TV/DVD
- Private access to head and shower
- SMX a/c control

GUEST STATEROOM

- Perpendicular upper and lower bunks
- Pillows, sheets and coordinated spreads
- Storage below bottom bunk
- Maple lined hanging locker with light
- Shelf storage
- Toshiba TV/DVD
- Splendide 2000 Washer/Dryer combo is located in companion way just forward of the

guest stateroom

GUEST HEAD/ SHOWER

- Satin finish
- Access from hallway or VIP cabin to head
- Tile flooring
- Stainless steel elliptical hand rails
- Large Vacu-flush head
- Shower with seat and adjustable wand
- Mirrored medicine chest
- Vanity with solid surface counter top
- Solid surface sink with Grohe faucet
- Storage below vanity

Galley

- Corian countertops w/cutting board
- Sink w/single lever Moen faucet
- Lower storage cabinets
- Glass & dish storage w/wine rack
- Kenyon 2-burner recessed stove
- Wine rack w/custom bottle storage
- Sub Zero undercounter freezer w/icemaker
- Sub Zero undercounter refrigerator
- Panasonic icrowave/convection oven w/stainless steel face
- 12V outlet
- Power vent
- Slide-out trash receptacle
- Wood flooring

Dinette

- Wrap-around seating with storage below
- Table with wood surface and storage below

TECHNICAL CONTROL STATION

- 24 Volt bow thruster
- Emergency engine stop
- Emergency engine start
- Compass

- Air horn with accumulator tank
- Brushed metal instrument panels
- Instrumentation, custom Sea Ray backlit with low glare blue night lighting and stainless steel bezels
- Electronic shift and throttle controls
- ACR remote control spotlight with dual halogen bulbs
- Power assisted hydraulic steering
- Wood accent tilt steering wheel
- Illuminated weatherproof rocker switches with dimmer control

ELECTRICAL SYSTEMS

- 4 8D batteries
- 1 group 27 battery for generator
- Battery charger 120V/10Amp/12V
- Battery charger 240V/50Amp/24V
- Battery charger overcurrent protection
- Battery equalizer
- Battery solenoid switches
- Cable TV inlet with cord
- Glendenning Cablemaster with 50' cord
- Shore power isolation transformer
- Color coded and labeled wiring with chafe protection

GENERATOR

- Onan 21.5 kW diesel
- Soundshield
- Remote start
- Sea cock and sea strainer
- Fuel filter
- Muffler
- Freshwater cooling

ENGINE ROOM

- 3 24 volt bilge pumps/automatic
- 2 24 volt highwater bilge pumps/automatic
- Power Pac exhaust system with mufflers and sound insulation
- Fan
- Handheld fire extinguishers
- Automatic dual fire suppression system with engine shutdowns, overrides and manual pull
- Diamond plate fiberglass flooring
- Gel coated engine room

- 2" vinyl barrier insulation
- Stainless steel ladder removable, swing away
- Trouble light with cord reel
- Oil change system for engines, transmissions and generator

FUEL SYSTEM

- Selector for generator
- Racor dual fuel filters 2 per engine
- Type A1 fuel lines
- Aluminum tanks with electric sending units

WATER SYSTEM

- 150 gallon tank
- Water manifold system
- 18 gallon 240 volt water heater
- 2 24 volt water pumps
- Hot and cold shower at cockpit

WASTE SYSTEM

- Cabin sump pump 24 volt
- Central drain system
- Vacu flush head system
- Holding tank level indicators at MDP and heads
- 68 gallon holding tank
- Dockside pumpout fitting
- Macerator with seacock interlock system

UNDERWATER GEAR

- Bonding system with Zinc plate
- 2 1/2" Stainless steel Aquamet propeller shafts
- Nibral 4 blade cupped propellers
- Maganese Bronze rudders with stainless steel posts
- Sea cocks and sea strainers
- Dripless shaft logs and spare seal kit
- Maganese Bronze struts
- Trim tabs with dual rams with pump

HULL & DECK FEATURES

- 316 stainless steel bow rails with welded stanchions, intermediate rails and life lines

- 316 stainless steel deck rails, hand rails and deck plates
- 8 custom Sea Ray cleats stainless steel
- 6 portlights, stainless steel 2 opening
- 20x20 deck hatch

CANVAS (SUNBRELLA)

- Aft curtain
- Hardtop enclosure
- Windshield shades

WINDLASS SYSTEM

- Galvanized anchor
- Anchor locker with hatch
- Stainless steel anchor chute
- Anchor washdown with spigot and hose
- Windlass with foot switches

COCKPIT FEATURES

- Carpet liner snap in
- Sliding and lockable stainless steel door with screen
- Transom door
- Self bailing
- Stainless steel hand rails
- Engine hatch gas assisted
- Lighting
- GFI outlet
- Molded deck access steps
- Storage lockers
- Specifications
- Overall Length : 58'7" / 17.88 m
- Overall Length w/Opt. Hydraulic Swim Platform : 61'4" / 18.69 m
- Beam : 16' / 4.88 m
- Draft (Inboards) : 51" / 130 cm
- Dry Weight : 51,500 lbs / 23,360 kg
- Fuel Capacity : 700 gal / 2,649 L
- Water Capacity : 150 gal / 568 L
- Holding Tank : 68 gal / 257 L
- Dead Rise : 17° /

Twin 900hp 900 Common Rail V-8 Man Engines, 1000 Hours (1000 Hour Service Completed), Hydraulic swim platform with remote control and manual control, Raymarine Autopilot (Raypilot

St-8001+), Raymarine E120 Gps/Chartplotter/Radar, Sea Ray Navigator Ii, Gps/Chartplotter - 12.1" Pc, Vhf Radio, Blue Hull, Major Service (1,000 hour) MAN Performed, Onan 21.5 KW Generator.

Vessel is also equipped with a West Marine inflatable tender with new (2014) Mercury 25hp Outboard.

More powerful and adventurous than any other yacht in its class, the 58 Sedan Bridge is ready to take command of the water. It's bold, dynamic styling includes a fiberglass hardtop as well as the very latest in marine electronics. Driven by powerful twin MAN V8 diesel inboards, this Sedan Bridge has a higher fuel capacity than most yachts in its category, plus all the strength and durability you'll need for exploring rougher waters.

Recent Maintenance Items:

2013: Replaced drive shaft seals

2013: Replaced bow thruster battery charger

2013: Checked and replaced all hoses needing replacing

2013: Replaced Eisenglass and outdoor carpets.

June 2013: Scott Marine 1000 hour engine Service. Invoice on file.

June 2014: New thruster batteries

August 2014: Main A/C pump replaced

Dec 2014: New forward head pump installed

Jan 2015: Swim platform new circuit board and new breaker switch.

Jan 2015: Lower aft bilge pump rewired.

Jan 2015: Zincs replaced main engines

March 2015: All port and starboard 8-d batteries replaced

May 2015: Hull and Super Structure Compounded and Waxed

May 2015: Bottom Cleaned and all Zincs Replaced

Основная информация

Тип судна: Моторная яхта

Подкатегория: Convertible

Модельный год: 2006

Год постройки: 2006

Страна: United States

Открытая палуба мостика: Да

Кубрик: Да

Размеры

Длина общая: 58' 0" (17.68m)

Ширина: 16' 0" (4.88m)

Макс. осадка: 4' 3" (1.30m)

Скорость, вместимость и масса

Вместимость воды: 150 Gallons

Вместимость сточного бака: 68 Gallons

Объем топливного бака: 700 Gallons

Размещение

Всего кают: 3

Корпус и палуба

Материал корпуса: Fiberglass

Информация о двигателе

Двигатели: 2

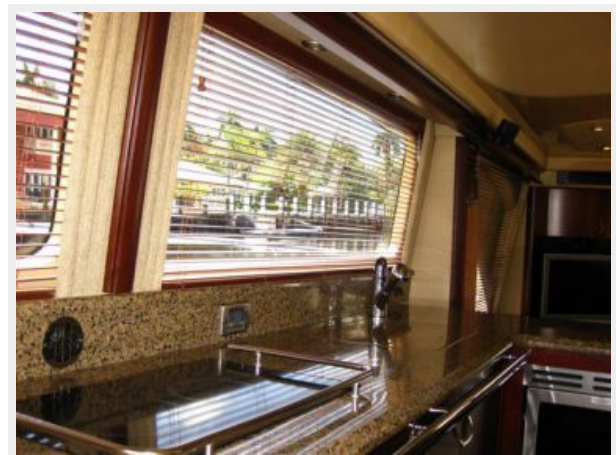
Производитель: MAN

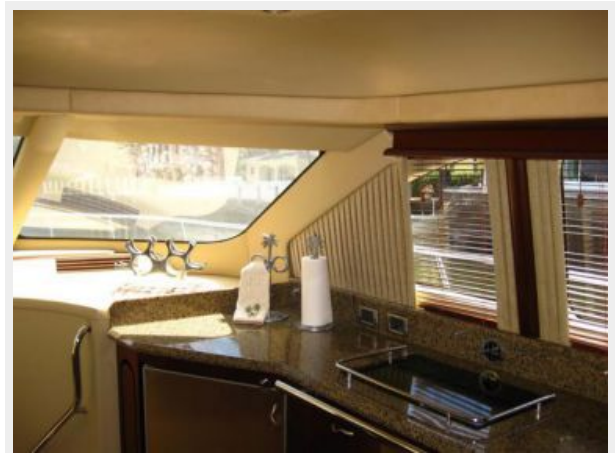
Модель: CRM V-8 DIESEL 900hp x 2

ФОТОГРАФИИ

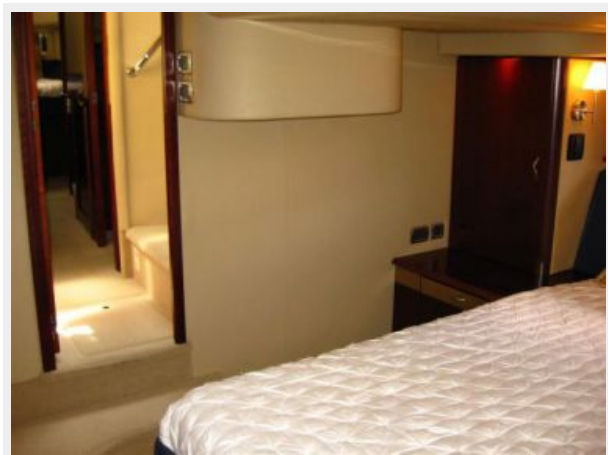


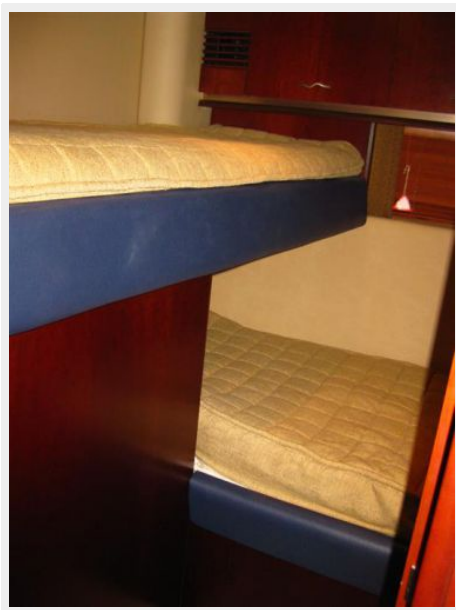




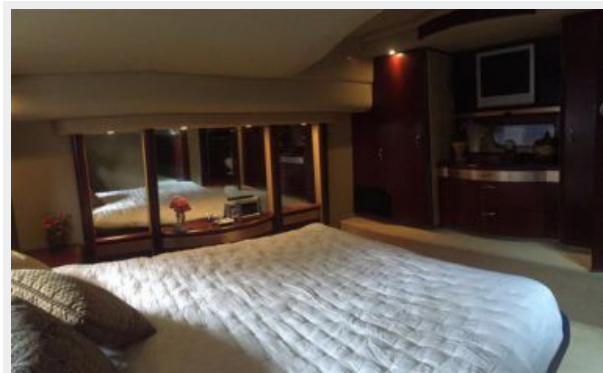


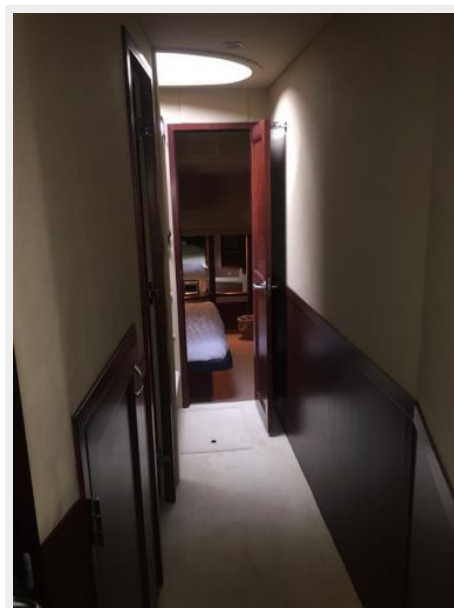






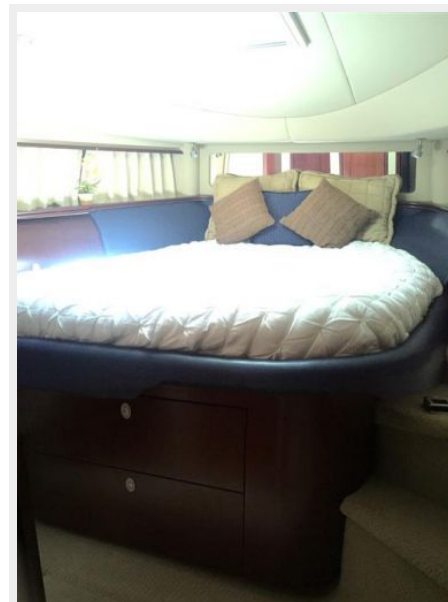


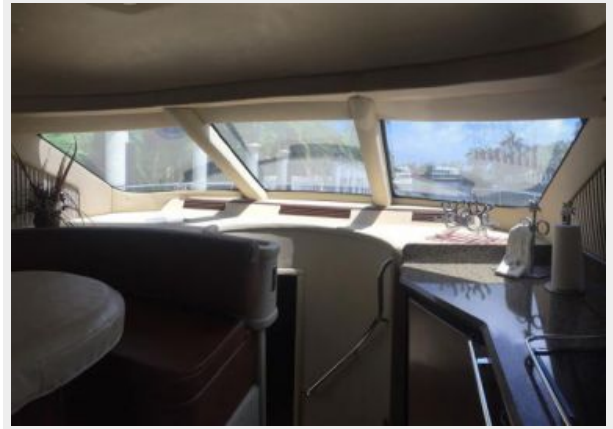




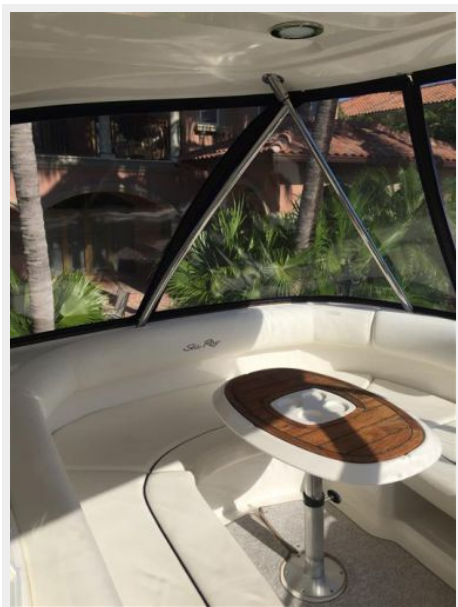




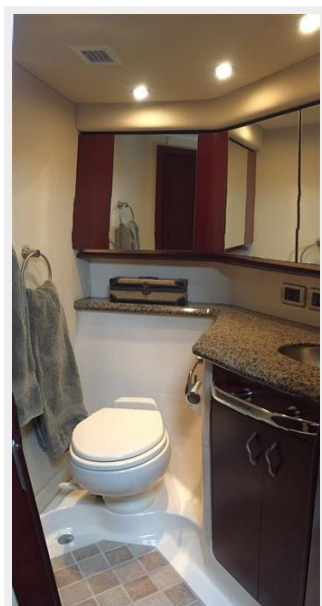
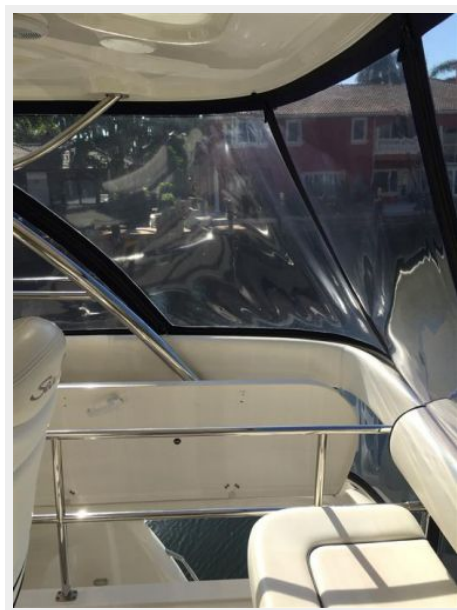


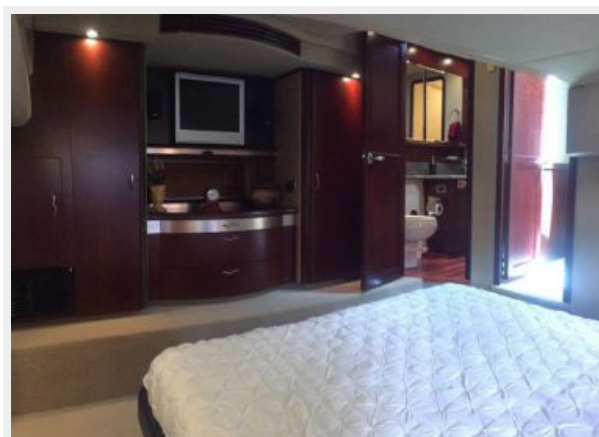
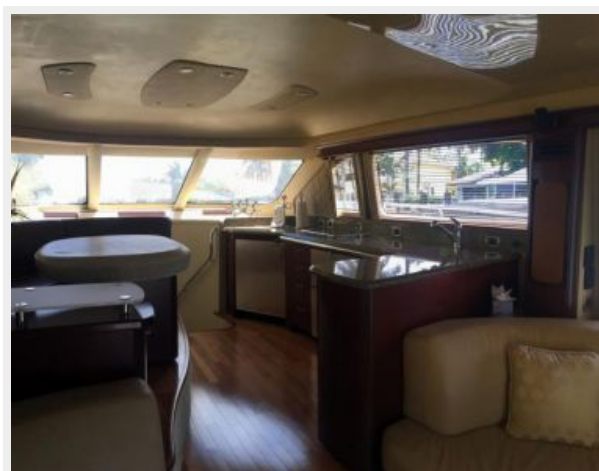














КОНТАКТЫ

Андрей Шестаков (Andrey Shestakov) – ведущий яхтенный брокер отдела продаж яхт и судов компании Shestakov Yacht Sales Inc. Официальный представитель Shestakov Yacht Sales Inc. для русскоговорящих клиентов в центральном офисе компании в Майами/Форт Лодердейл/Флорида/США.

Контактная информация

Email: andrey@shestakovyachtsales.com

Web: shestakovyachtsales.com

Телефоны

Краснодарский край: **+7(918)465-66-44**

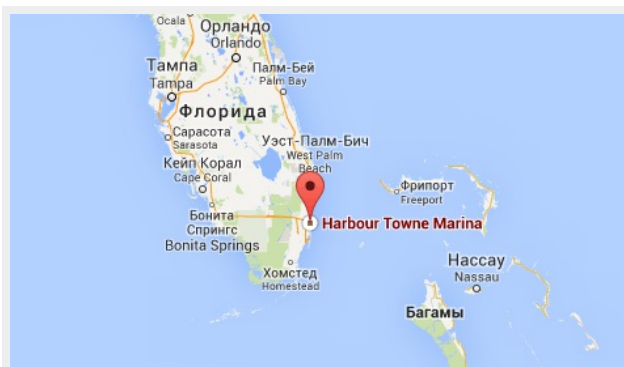
США, Майами, Флорида: **+1(954)274-4435**

Время работы

Понедельник – Суббота: **9:00 - 21:00**
EDT

Воскресенье: **Закрито**

Адрес



Harbour Towne Marina, 850 NE 3rd St,
STE 213, Dania, FL 33004