

## DEBT SETTER — PRINCESS YACHTS



**Builder:** PRINCESS YACHTS

**Year Built:** 2014

**Model:** Motor Yacht

**Price:** PRICE ON APPLICATION

**Location:** United States

**LOA:** 52' 0" (15.85m)

**Beam:** 15' 7" (4.75m)

**Max Draft:** 4' 1" (1.24m)

**Cruise Speed:** 26 Kts. (30 MPH)

**Max Speed:** 33 Kts. (38 MPH)

Our experienced yacht broker, Andrey Shestakov, will help you choose and buy a yacht that best suits your needs **Debt Setter — PRINCESS YACHTS** from our catalogue. Presently, at Shestakov Yacht Sales Inc., we have a wide variety of yachts available on our sale's list. We also work in close contact with all the big yacht manufacturers from all over the world.

If you would like to buy a yacht **Debt Setter — PRINCESS YACHTS** or would like help answering any questions concerning purchasing, selling or chartering a yacht, please call **+1(954)274-4435**

# TABLE OF CONTENTS

---

TABLE OF CONTENTS	2
SPECIFICATIONS	5
Basic Information	5
Dimensions	5
Speed, Capacities and Weight	5
Accommodations	5
Hull and Deck Information	5
Engine Information	6
DETAILED INFORMATION	7
History	7
Introduction	7
Features	7
Equipment	8
Salon	10
Galley	10
Companionway / Foyer	11
Master Stateroom	11
Master Head	12
VIP Stateroom	12
Guest Stateroom	13
Day Head	13
Crew Quarters	13
Fly Bridge	14
Fly Bridge Electronics	14
Lower Helm	15
Audio / Video	15
Aft Deck	15
Deck Fittings	16

Machinery Space	16
Engine Room	17
Exclusions	17
Exclusions	17
Disclaimer	17
PHOTOS	19
Salon	19
Salon	19
Salon	19
Salon	19
Galley	19
Galley	19
Master Stateroom	20
Master Stateroom	20
Master Stateroom	20
Master Head	20
Master Head	21
VIP Stateroom	21
Guest Stateroom	21
VIP Stateroom	21
Guest Stateroom Head	22
Crew Quarters	22
Crew Quarters	22
Laundry	22
Lower Helm	23
Lower Helm	23
Stairs to Flybridge	23
Flybridge (Day)	23
Flybridge (Day)	24

---

Flybridge (Day)	24
Flybridge (Night)	24
Flybridge (Night)	24
Flybridge (Night)	24
Upper Helm (Day)	24
Upper Helm (Night)	25
Aft Deck (Night)	25
Stbd Passageway	25
Aft Deck (Night)	25
Engine Room	26
Bow	26
Engine Room	26
Engine Room	26
Stern	27
Tender	27
Stern	27
Profile 2	27
Running	28
Underwater Lights	28
Running	28
Layout	28
Layout	28
Layout	28
<b>CONTACTS</b>	<b>29</b>
Contact details	29
Telephones	29
Office hours	29
Address	29

---

# SPECIFICATIONS

---

## Basic Information

---

**Category:** Motor Yacht

**Sub Category:** Flybridge

**Model Year:** 2014

**Year Built:** 2014

**Country:** United States

**Fly Bridge:** Yes

## Dimensions

---

**LOA:** 52' 0" (15.85m)

**Beam:** 15' 7" (4.75m)

**Max Draft:** 4' 1" (1.24m)

## Speed, Capacities and Weight

---

**Cruise Speed:** 26 Kts. (30 MPH)

**Max Speed:** 33 Kts. (38 MPH)

**Displacement:** 51900 Pounds

**Gross Tonnage:** 52200 Pounds

**Water Capacity:** 156 Gallons

**Fuel Capacity:** 624 Gallons

## Accommodations

---

**Total Cabins:** 3

**Total Berths:** 6

**Total Heads:** 3

**Captain Cabin:** True

## Hull and Deck Information

---

**Hull Material:** Fiberglass

---

## Engine Information

---

**Engines:** 2

**Manufacturer:** MAN

**Model:** R6

**Engine Type:** Inboard

**Fuel Type:** Diesel

---

# DETAILED INFORMATION

---

## History

---

Princess American Edition-Since 1995, Princess Yachts have been distributed in the United States, Canada, Central America, the Caribbean, and Venezuela with Princess Yachts America (formerly known as Viking Sport Cruisers) as the sole authorized importer. The yachts built for Princess Yachts America have a greatly expanded scope of standard equipment which includes components and systems sourced from North America when compared to Princess Yachts built for other parts of the world. These yachts are built specifically to Princess Yachts America specifications to comply with or exceed the regulations of the United States Coast Guard's Office of Boating Safety (USCG). In addition, these yachts also comply with or exceed the build specification recommendations of the American Boat and Yacht Council (ABYC). Princess Yachts built for distribution in other parts of the world are not built to comply with USCG, ABYC recommendations, regulations or requirements. Princess Yachts built for Princess Yachts America are classified as "Princess American Edition" on Yacht World.

## Introduction

---

"Debt Setter" is without a doubt cleaner and more custom than a brand new vessel. The distinguished yachtsman that purchased this vessel new has kept her in above excellent condition with a full-time captain. The vessel has many upgrades from the standard 52 including additional hard top, oversized trim tabs, a Pioneer Linen custom interior, custom sun pads with adjustable backrests, UMT 6-step custom boarding ladder, upgraded additional air conditioning system, V-Cool tint throughout salon, new 13' Zodiac tender w/ Yamaha 40HP, optional hydraulic swim platform and backed with a transferable bow to stern manufacturer's warranty in effect through 2016. Conveniently located at the Boca Hotel Resort and Club's Marina, "Debt Setter" is sure to help any prospective buyer appreciate this meticulous yacht.

The new Princess 52 is a very ultra modern motor yacht that is very attractive, functional and sea worthy. They are also designed for entertaining a large group of people both at the dock and underway. The boat can seat over 30 adults on two decks for a cocktail party. Her flying bridge is intended to be an observation deck as well as an entertaining deck and she can seat 18 people in three venues for a sit-down dinner party. In the salon, the wraparound windows let in an abundance of light. The well-equipped galley is located aft, serving both the salon and cockpit and resulting in hugely versatile entertaining space. The flybridge extends back over the cockpit and includes a full dining area with a barbeque, fridge and wetbar, while the twinseat helm station provides great visibility. The master stateroom features full headroom around the double berth, a sofa and hullside windows with opening portholes.

## Features

---

- Showroom Condition - Boat has been captain - maintained and docked at the Boca Raton Hotel Resort and Marina since time of delivery - All records up to date
- Warranty full coverage through 2016 transferable and full contractual manufactures warranty in effect
- Pioneer linen interior custom fitted
- LED lighting upgrade
- Upgraded to Bennett Duel actuator Premiere Line trim tabs
- Remarkable handling and maneuverability from the latest variable - geometric hull
- Fully transferable contractual Manufacture's Warranty good thru 01/16
- Effortless power with a top speed of up to 33 knots
- The finest master stateroom on a boat of this size
- Galley aft layout for superb on-deck dining
- Three cabins plus an optional crew of child's cabin
- Custom linen package by Pioneer Linens
- Massive seating for entertaining
- 24" Mirage Vision Outdoor LED/LCD/HDTV (Diamond Series)
- Aft galley (the first time Princess has ever done it)
- Unobstructed view through salon windows
- Llumar V-Cool powered custom window tint
- Aft deck door on hinges and slides
- State-of-the-Art Washer & Dryer
- Full camera system
- Premium Ghost alarm system
- 5- Step custom gangway
- LED illuminated lettering
- HD7 24" SAT TV System
- (4) Lumishore Blue Underwater lights

---

## Equipment

---

- **Engines & Drive:**
- MAN R6 @ 800 hp each - Extended Warranties available thru MAN
- Oil changer for engines & generator
- Variable speed bow and stern thrusters
- Duplex engine fuel filters
  
- **Hull Color:**
- White Hull
  
- **Interior Furniture:**
- Wood Interior: Walnut Satin
- Coca brown leather helm seats
  
- **Layout:**



- Sliding electric berth in starboard stateroom
- Crew cabin (single berth w/toilet & wash basin) W/ Moonshine Berber Carpet
- Custom sideboard with under counter freezer & bottle storage
  
- **Galley:**
- Galley Avonite: Carrera White
- Garbage disposal
  
- **Bathrooms:**
- Master & Guest Heads Countertops: Koko White Avonite
- Master & Guest Heads Flooring: Carrera White Avonite
  
- **Deck Hardware:**
- Electro - hydraulic swim platform (880 lbs SWL-Maximum advised tender weigh 660 lbs, 264 lbs if Seakeeper Gyro installed)
- Sun bed benches with independent adjustment
- Flybridge Hardtop (including lighting)
- Salon table to be powered up/down to convert to coffee table
- Custom UMT 6 step alluminum boarding ladder
  
- **Electrical:**
- (1) Voltage Stabilizer Transformer
- (1) Glendinning Cablemaster
- Central vacuum
- State-of-the-Art Washer/Dryer
- Lava brick BBQ fitted in flybridge wetbar
  
- **Audio/Visual Equipment:**
- 28" LED TV w/AM/FM stereo CD/DVD in starboard stateroom
- Waterproof cockpit speakers connected to flybridge JL Audio stereo
- HD Direct TV with internet and WiFi
  
- **Navigational Equipment:**
- *Garmin Navigation Package as follows:*
- Garmin GPSMAP8212 chartplotter at lower & upper helm
- Garmin GMR424 x H 4kW, 4ft open array radar
- Garmin GM120 data repeaters in place of standard i70 displays
- Garmin VH300 handset VHF in place of standard Simrad
- Garmin GHC 20 Autopilot in place of standard
- Garmin electronics connected to engines
- Chase tubes with pull string for later fitting of SAT TV:
- From radar arch to main salon TV
- From TV distributions in the salon the master, forward & starboard TV locations
- From the lower helm to the upper helm
  
- **Exterior Upholstery/Canvas/Covers:**

- Exterior Upholstery in Movida Met
- Cockpit seating covers
- Flybridge carpet in Moonshine Berber
- **Spares/Delivery:**
- Water delivery
- **Standard Equipment:**
- US electrical system, 120v / 60hz throughout, including Duplex US outlets
- Air conditioning
- Generator upgrade to 13.5 kw / 60 hz
- Holding tank w/ electric overboard and dockside discharge
- Dockside TV / phone outlet
- Premium Audio System including Harman Kardon 2.1 Blu-ray system and KEF speakers in deck salon & master stateroom. Also includes on Flybridge Fusion IP600 radio/iPod/MP3 player with waterproof speakers linked to the salon audio system
- 40" LED TV in salon
- 28" LED TV in master stateroom
- 28" LED TV with AM/FM stereo DC/DVD in forward VIP
- Icemaker in salon
- Linen package
- Set of china, cutlery and glasses for six
- Pillow package
- Shortened pulpit rail with removable teak boarding step

---

## Salon

---

- Camera
- V- cool tint in all salon windows
- Trend tempered windows
- Custom white leather seat for (4) to starboard
- Custom white leather couch to port for (6-8) with ATP motorized height adjusting table base with 220 lbs capacity from Italy and folding teak table
- Custom carpet with carpet runners
- Cruise air digital air conditioning controls
- Phone jack
- Universal smoke detector
- Custom Oceanair blinds
- Port forward storage
- Lighting controls

---

## Galley

---

- Galley to starboard aft
- Franke sink with hansgrohe faucet
- 110 outlets Vimar
- Storage
- Triden 3 burner stove / range
- Sharp R-820JS-F convection
- Microwave oven
- Port and Starboard sliding windows
- Waco freezer (3) drawer
- Vitrifrigo ice maker
- Liquor closet
- Handmade Dartington crystal cabinet from England
- Handmade Legle dish and plate cabinet from France

---

## Companionway / Foyer

---

- Salon table height controller
- 110/220 AC power distribution
- AC power monitor
- 24v DL power distribution
- Ghost Phantom alarm system by Paradox
- Light controls

---

## Master Stateroom

---

- Queen size bed
- Reading lamps
- Custom white leather
- Love seat to port
- Large hull windows with opening port lights
- Wood blinds
- Large closet
- His /hers bed side storage
- (4) Drawer cabinet to starboard
- 6'4" head room
- Panasonic HD TV
- Direct TV
- AMSEC electronic safe DL 5000
- Lighting controls
- Universal smoke detector

- Cruisair AC controls
- Splendide washer/dryer WD 2100 XC

---

## Master Head

---

- Mirrored medicine cabinet
- Perrin Rowe sink with Hansgrobe faucet
- Vim AR GFI outlet
- Dometic toilet
- Storage water sink
- Flooring
- Floor to ceiling glass shower door
- Handgrobe shower
- Opening port light with ocean air blinds
- Stainless towel rack
- Lighting control
- Fan control

---

## VIP Stateroom

---

- Queen bed
- Custom carpet
- Port side closet
- Direct TV
- Kidde multi purpose dry chemical
- Samsung HD TV
- Lighting controls
- Cruisair AC controls
- Sky light/ escape hatch
- Port / Starboard large out opening windows / port lights
- (2) reading night lights
- (4) upper cabinet storage
- Fusiun stereo controls
- Recessed hide away storage cabinet to port
- Private head access
- (2) hideaway mini leather stools leather and wood
- (2) large drawers under bed
- (2) speakers
- Universal smoke detector
- Black leather counters

---

## Guest Stateroom

---

- Twin bed that slide to make a full bed
- Standing and hanging closet
- Cruisair controls
- Motorized sliding bed control
- Lighting controls
- Samsung HD TV
- Stereo speakers
- Universal fire extinguisher
- (2) oval opening port windows

---

## Day Head

---

- Mirrored medicine cabinet
- Perrin Rowe sink with Hansgrobe faucet
- Vim AR GFI outlet
- Dometic toilet
- Storage water sink
- Flooring
- Floor to ceiling glass shower door
- Handgrobe shower
- Opening port light with ocean air blinds
- Stainless towel rack
- Lighting control
- Fan control

---

## Crew Quarters

---

- AC controls
- Cruisair AC system
- (1) twin bed
- Dometic toilet
- Bilge access
- Custom carpet
- Reading light
- Lighting controls
- Large window looking Aft
- Hangrohe faucet
- Storage cabinets
- Ocean air blinds

---

## Fly Bridge

---

- Custer drain added to fridge / refrigerator
- Gas assisted and tinted staircase door
- Teak table with 20 coats of varnish
- Deck floor lighting
- Wycapp custom carpet and cushion covers with storage under seating
- Storage under seating
- Refrigerated cooler with drains
- Optional hard top
- Recessed led lighting
- JL Audio speakers (4)
- Mirage vision outdoor TV HD
- Smeg grill
- Lira stainless steel sink with paint faucet
- Locker with storage and trash can
- (7) cup holders
- Thru ring with rescue rope

---

## Fly Bridge Electronics

---

- Plastimo compass offshore 105 white
- Analog - digital gauges
- Rudder
- Water temp
- Oil psi
- RPM
- Digital alarm engine system
- Gasmin GH 510 VHF
- Gasmin FML 10 depth & Speed
- Gasmin FMI 10 Auto pilot
- Fusion Stereo system MS-MR X 200I
- Gasmin GPS
- MAN engine controls
- Side power bow and stern variable speed control
- Engine start and stop buttons
- Bennet MD trim control
- ACR search light point pad URP 102
- Fire boy Xintex control fire suppression system
- AFI horn

---

## Lower Helm

---

- (2) Coco brown leather capt- navigation chairs
- Princess brushed aluminum laquered wood and leather wrapped steering wheel
- Plastimo offshore 105 compass black
- UDO RPM tachometers
- UDO rudder indicator
- Port and Starboard MAN main engine displays MMDS - LL CAN
- (2) cup holders
- Recessed storage locker with Garmin chip loader & 12 volt outlet
- Battery link
- Fuel tank gauge port/starboard
- Sliding window controls
- Side power bow/stern controller
- Garmin GPS
- Engine alarm display
- Garmin GMI 10 depth
- Garmin GMC 10 Auto pilot
- Ignition keys
- Starboard / stop controls
- AC vents
- Bennett trim tab controls with lighted display indicators
- Fire boy Xintex fire suppression system
- Camera monitor for salon

---

## Audio / Video

---

- Direct TV & HD DVR
- Harmon / Kardon BDS
- Trac vision KUM

---

## Aft Deck

---

- New teak deck by Wood Chuck workshop
- Fly bridge stair case & starboard with teak steps
- Port and starboard storage lockers
- Rope lockers
- Stainless steel cleats
- Swim platform key pad
- Deck lighting
- Multi color overhead lightning
- JL audio speakers (2)

- Fusion stereo control
- Crew quarters access
- Whole manual bilge pump control station
- Engine room access
- Fresh water shower
- Shore line connection station
- Glendining 50 amp shorepower cord

## Deck Fittings

---

- Port and Starboard fuel fills
- (8) Kleats
- (2) Wind shield wiper with washers
- Lewman windless
- Delta anchor
- (2) bow lockers
- Windless controler
- Deck wash outlet port
- Anchor locker
- Forward VIP trend marine sky light / escape hatch
- Forward custom sun pads with individual recline settings
- Black tank pump out
- Vetus air vent starboard
- Water fill starboard
- Navigation lights
- Stainless steel reilings with life line
- (3) Deck drains
- New upgraded wood chuck workshop teak aft deck and swim platform

## Machinery Space

---

- Separate A/C system for crew
- New Dometic cruisar 36,000 btu AC compressor
- Water drain system
- Imo AC voltage switch
- Cruisair cpu
- A/C pump breaker
- Side power stern thruster PCP 800
- Generator start battery
- 230v Scot A/C motor pump x41671 2c
- Engine & house batteries
- Sleipner motor steering power system



- Side power main switch stern thrusters
- Fuse panel for bow and stern thrusters
- Halyard water separator for gen set
- Reverso oil change system
- Gen set muffler Cummins / Onan generator
- Separ fuel filter for gen set 2000
- Enviro vent galley extraction fan
- Generator switch
- Lighting
- Princess design plates and code compliance books
- A/C intake strainer

---

## Engine Room

---

- Master volt chargemaster 24/60/3
- Camera monitor for GPS captain
- (2) MAN R6 800 with transferable international main engine warranty available through Nov. 2017
- (2) ZF marine transmissions ZF 32r IA's
- Hallyard marine exhaust system
- (2) Main engine water strainers
- (2) Princess Aluminum 1200 liter fuel tanks
- (2) Twin port and starboard MAN fuel filters PL 420
- (2) Port and starboard /ZF / MAN engine and transmission CPU
- Fireboy - Xintex halon system 286
- Fresh water supply
- Jabsco vent fans
- Skips systems control
- Gen set strainer

---

## Exclusions

---

- Zodiac Tender

---

## Exclusions

---

Owner's personal belongings.

---

## Disclaimer

---

The Company offers the details of this vessel or yacht in good faith but cannot guarantee or

warrant the accuracy of this information nor warrant the condition of the vessel. A buyer should instruct his representatives, agents, or his surveyors, to investigate such details as the buyer desires validated. This vessel or yacht is offered subject to prior sale, price change, or withdrawal without notice.

# PHOTOS

Salon



Salon



Salon



Salon



Galley



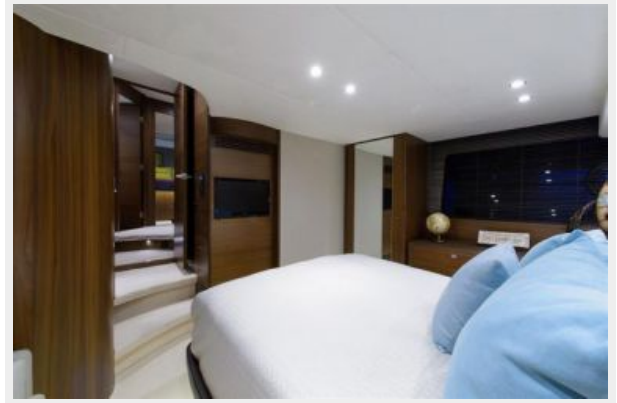
Galley



**Master Stateroom**



**Master Stateroom**



**Master Stateroom**



**Master Head**



**Master Head**



**VIP Stateroom**



**VIP Stateroom**



**Guest Stateroom**



### Guest Stateroom Head



### Crew Quarters



### Crew Quarters



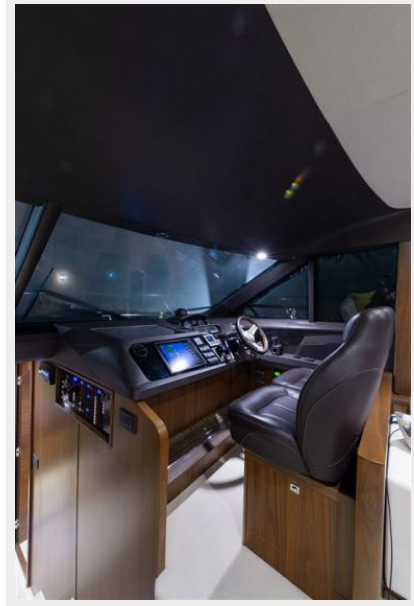
### Laundry



**Lower Helm**



**Lower Helm**



**Stairs to Flybridge**



**Flybridge (Day)**



**Flybridge (Day)**



**Flybridge (Day)**



**Flybridge (Night)**



**Flybridge (Night)**



**Flybridge (Night)**



**Upper Helm (Day)**





**Upper Helm (Night)**



**Aft Deck (Night)**



**Stbd Passageway**



**Aft Deck (Night)**



**Bow**



**Engine Room**



**Engine Room**

**Engine Room**



Tender



Stern



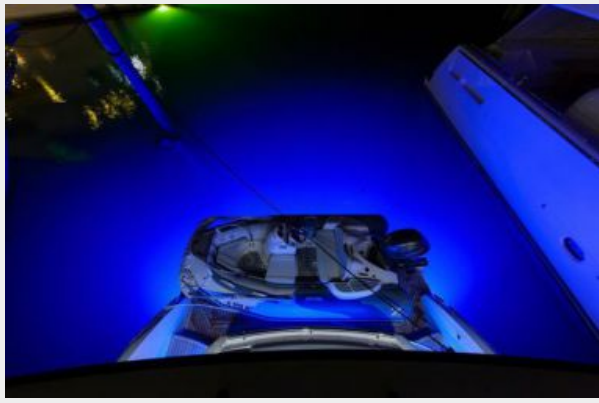
Stern



Profile 2



**Underwater Lights**



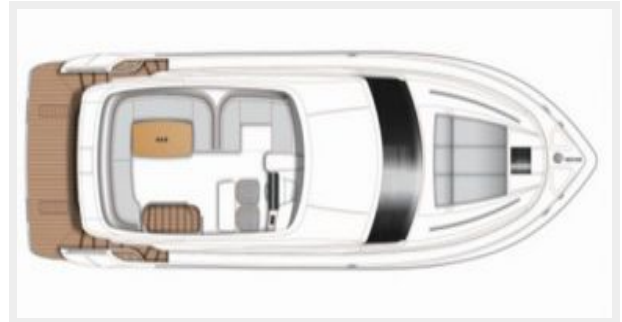
**Running**



**Running**



**Layout**



**Layout**



**Layout**



---

# CONTACTS

---

Andrey Shestakov, leading yacht broker of the sales department of Shestakov Yacht Sales Inc. Shestakov Yacht Sales Inc., the official representative of the Miami/Fort Lauderdale FL headquarters.

---

## Contact details

---

Email: [andrey@shestakovyachtsales.com](mailto:andrey@shestakovyachtsales.com)

Web: [shestakovyachtsales.com/en/](http://shestakovyachtsales.com/en/)

---

## Telephones

---

USA: +1(954)274-4435

---

## Office hours

---

Monday – Saturday: **9:00 - 21:00** EDT

Sunday: **closed**

---

## Address

---



Harbour Towne Marina, 850 NE 3rd St,  
STE 213, Dania, FL 33004