

## DARWIN 102 — CANTIERE DELLE MARCHE



**Builder:** Cantiere delle Marche

**Year Built:** 2018

**Model:** Motor Yacht

**Price:** PRICE ON APPLICATION

**Location:** Mexico

**LOA:** 102' 0" (31.09m)

**Beam:** 24' 4" (7.42m)

**Max Draft:** 7' 7" (2.31m)

**Cruise Speed:** 12 Kts. (14 MPH)

**Max Speed:** 14 Kts. (16 MPH)

Our experienced yacht broker, Andrey Shestakov, will help you choose and buy a yacht that best suits your needs Darwin 102 — Cantiere delle Marche from our catalogue. Presently, at Shestakov Yacht Sales Inc., we have a wide variety of yachts available on our sale's list. We also work in close contact with all the big yacht manufacturers from all over the world.

If you would like to buy a yacht Darwin 102 — Cantiere delle Marche or would like help answering any questions concerning purchasing, selling or chartering a yacht, please call +1(954)274-4435

# TABLE OF CONTENTS

TABLE OF CONTENTS	2
SPECIFICATIONS	5
Overview	5
Basic Information	5
Dimensions	5
Speed, Capacities and Weight	5
Accommodations	6
Hull and Deck Information	6
Engine Information	6
DETAILED INFORMATION	7
OVERVIEW	7
Specifications	7
SHIPYARD MISSION STATEMENT	7
Exclusions	8
Disclaimer	8
PHOTOS	9
ACALA	9
ACALA	9
ACALA	9
ACALA	9
ACALA	9
ACALA	9
Bridge windows - Sister ship	10
Bridge windows - Sister ship	10
Bridge walk arounds -Sister ship	10
Wheel house - Sister ship	10
Main salon - Sister ship	10
Main salon - Sister ship	10

Main salon - Sister ship	11
Main salon - Sister ship	11
Main salon - Sister ship	11
Sky lounge - Sister ship	11
Guest foyer - Sister ship	11
Guest cabin with pullman berth - Sister ship	11
Guest bath - Sister ship	12
Guest cabin - Sister ship	12
Guest bath - Sister ship	12
Master cabin - Sister ship	12
Master bath - Sister ship	12
Master Cabin - Sister ship	12
Master bath - Sister ship	13
ACALA	13
ACALA	13
ACALA	13
ACALA	13
ACALA	13
ACALA	14
ACALA	14
ACALA	14
ACALA	14
ACALA	14
Engine room - Sister ship	14
Engine room - Sister ship	14
Engine room - Sister ship	15
Lazaretto - Sister ship	15
Engine room - Sister ship	15
ACALA	15
Machinery - Sister ship	15

---

ACALA	15
Darwin 102	16
Darwin 102	16
Darwin 102	16
Darwin 102	16
Darwin 102	16
CONTACTS	17
Contact details	17
Telephones	17
Office hours	17
Address	17

---

# SPECIFICATIONS

---

## Overview

---

Each Cantiere delle Marche yacht is custom built for the individual client and has a personality of its own. Whether it is the custom color of the hull & superstructure, layout of the sundeck, interior decor, or the general arrangement floor plan - every detail is customized for that specific buyer. Combining quality, style, over engineering, & a family approach to business and the end result is a shipyard unlike any other. When you decide to build a yacht at Cantiere delle Marche you truly become part of the family and start on a long adventure ending with the delivery of a personalized yacht that exceeds your highest expectations. DYSID:2849718

## Basic Information

---

**Category:** Motor Yacht

**Sub Category:** Flybridge

**Model Year:** 2018

**Year Built:** 2018

**Country:** Mexico

## Dimensions

---

**LOA:** 102' 0" (31.09m)

**LWL:** 92' 0" (28.04m)

**Beam:** 24' 4" (7.42m)

**Max Draft:** 7' 7" (2.31m)

## Speed, Capacities and Weight

---

**Cruise Speed:** 12 Kts. (14 MPH)

**Max Speed:** 14 Kts. (16 MPH)

**Max Speed Range:** 5900 Kts.

**Displacement:** 947987726.6 Pounds

**Water Capacity:** 1585 Gallons

**Holding Tank:** 550 Gallons

**Fuel Capacity:** 10600 Gallons

---

## Accommodations

---

**Total Cabins:** 5

**Sleeps:** 12

**Total Heads:** 5

**Captain Cabin:** True

**Crew Cabin:** 4

**Crew Sleeps:** 7

---

## Hull and Deck Information

---

**Hull Material:** Steel

---

## Engine Information

---

**Engines:** 2

**Manufacturer:** MTU

**Model:** 8V 2000 M72

**Engine Type:** Inboard

**Fuel Type:** Diesel

# DETAILED INFORMATION

## OVERVIEW

The Cantiere delle Marche 'Darwin 102' is a full displacement, steel hull, aluminum superstructure long range explorer that is purposely built to travel the world's oceans in complete comfort regardless of weather conditions.

Each Darwin 102 is custom built for the individual client and can be completed in 18 months. Pictures included in this brochure showcase completed 'Darwin 102s' that have been successfully delivered to existing clients.

Complete customization includes general arrangement floor plans, interior layouts, decor, exterior deck spaces, dining areas, tenders, hull & superstructure color, and configuration of the lazarette area (ie dive center, spa, gymnasium).

## Specifications

**DIMENSIONS:** Length, overall Length, waterline Beam, moulded Depth, moulded Draught, at full load Displacement, full load 31.00m / 120.00 ft 28.00m / 92.00 ft 7.43m / 24.37 ft 4.00m / 13.12 ft 2.30m / 7.55 ft 215t / 212 long ton **TANK CAPACITIES:** Fuel Oil Fresh Water Black Water Grey Water Oil Dirty Oil Sewage Ballast Tank 40.000 l / 10600 US gal 6.000 l / 1585 US gal 1.100 l / 290 US gal 2.100 l / 550 US gal 600 l / 160 US gal 1.100 l / 290 US gal 1.100 l / 290 US gal 11.000 l / 2.900 US gal **PROPULSION:** Engines Transmission/Propulsion Diesel Generator Bow Thruster Stabilizer fins 2 x MTU 8V 2000 M72 720 kW @ 2250 Rpm 2 x ZF W2300 4:1 2 x 50kW Kohler Electrical 35kW Electrical 25kW **PERFORMANCE :** Max continuous speed Cruising speed Range 13.6 knots 13.2 knots 5900 nmi @ 10.0 knots **ACCOMMODATION:** Guest : 8 (+2) / 4 cabins Crew : 5 / 3 cabins

13.6 knots

13.6 knots

13.6 knots

13.2 knots

## SHIPYARD MISSION STATEMENT

The organisational structure of the Cantiere delle Marche Shipyard is flexible and highly skilled, thanks to a team that has designed and built thousands of metres of steel and aluminium ships in leading shipyards, both in Italy and abroad. On the strength of this wealth of know-how, plus its long-term relationships with the industry's leading professionals, the Cantiere delle Marche Shipyard is capable of working alongside its clients throughout the design, development and construction of any steel or aluminium yacht, guaranteeing attentive management of each phase

---

of the effort by teams assigned to that particular project, so as to ensure the top-flight quality and production excellence typical of all the Shipyard's vessels.

## **Exclusions**

---

Owner's personal belongings.

## **Disclaimer**

---

The Company offers the details of this vessel or yacht in good faith but cannot guarantee or warrant the accuracy of this information nor warrant the condition of the vessel. A buyer should instruct his representatives, agents, or his surveyors, to investigate such details as the buyer desires validated. This vessel or yacht is offered subject to prior sale, price change, or withdrawal without notice.



# PHOTOS

**ACALA**



**ACALA**



**ACALA**



**ACALA**



**ACALA**



**ACALA**



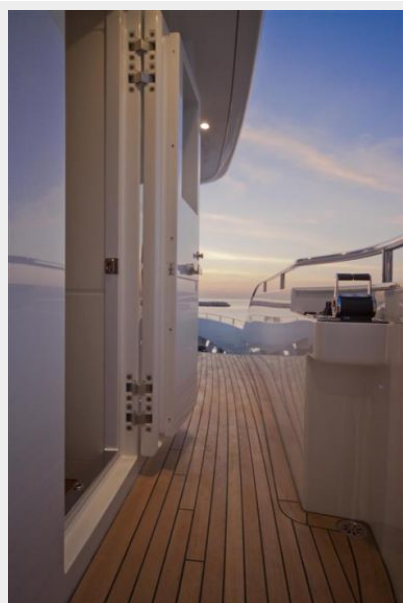
**Bridge windows - Sister ship**



**Bridge windows - Sister ship**



**Bridge walk arounds -Sister ship**



**Wheel house - Sister ship**



**Main salon - Sister ship**



**Main salon - Sister ship**



**Main salon - Sister ship**



**Main salon - Sister ship**



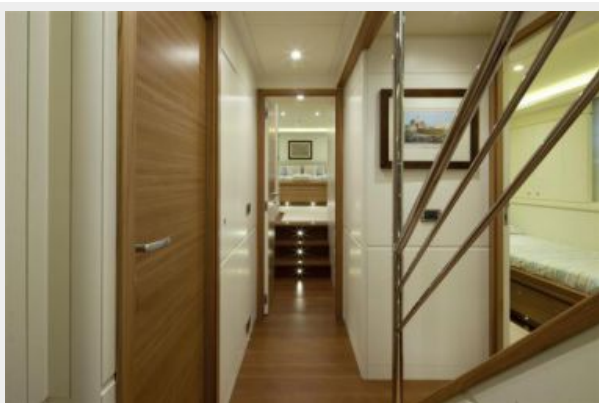
**Main salon - Sister ship**



**Sky lounge - Sister ship**



**Guest foyer - Sister ship**



**Guest cabin with pullman berth - Sister ship**



**Guest bath - Sister ship**



**Guest cabin - Sister ship**



**Guest bath - Sister ship**



**Master cabin - Sister ship**



**Master Cabin - Sister ship**



**Master bath - Sister ship**



**Master bath - Sister ship**



**ACALA**



**ACALA**



**ACALA**



**ACALA**



**ACALA**



**ACALA**



**ACALA**



**ACALA**



**ACALA**



**Engine room - Sister ship**



**Engine room - Sister ship**



**Engine room - Sister ship**



**Lazaretto - Sister ship**



**Engine room - Sister ship**



**ACALA**



**Machinery - Sister ship**



**ACALA**



**Darwin 102**



**Darwin 102**



**Darwin 102**



**Darwin 102**



**Darwin 102**





# CONTACTS

---

Andrey Shestakov, leading yacht broker of the sales department of Shestakov Yacht Sales Inc. Shestakov Yacht Sales Inc., the official representative of the Miami/Fort Lauderdale FL headquarters.

## Contact details

---

Email: [andrey@shestakovyachtsales.com](mailto:andrey@shestakovyachtsales.com)

Web: [shestakovyachtsales.com/en/](http://shestakovyachtsales.com/en/)

## Telephones

---

USA: +1(954)274-4435

## Office hours

---

Monday – Saturday: **9:00 - 21:00** EDT

Sunday: **closed**

## Address

---



Harbour Towne Marina, 850 NE 3rd St,  
STE 213, Dania, FL 33004