

## SKOOKUM — SAN JUAN



**Builder:** SAN JUAN

**Year Built:** 2000

**Model:** Motor Yacht

**Price:** PRICE ON APPLICATION

**Location:** United States

**LOA:** 38' 0" (11.58m)

**Beam:** 12' 1" (3.68m)

**Cruise Speed:** 25 Kts. (29 MPH)

**Max Speed:** 30 Kts. (35 MPH)

Our experienced yacht broker, Andrey Shestakov, will help you choose and buy a yacht that best suits your needs **Skookum — SAN JUAN** from our catalogue. Presently, at Shestakov Yacht Sales Inc., we have a wide variety of yachts available on our sale's list. We also work in close contact with all the big yacht manufacturers from all over the world.

If you would like to buy a yacht **Skookum — SAN JUAN** or would like help answering any questions concerning purchasing, selling or chartering a yacht, please call **+1(954)274-4435**

---

# TABLE OF CONTENTS

---

TABLE OF CONTENTS	2
SPECIFICATIONS	3
Overview	3
Basic Information	3
Dimensions	3
Speed, Capacities and Weight	3
Accommodations	3
Hull and Deck Information	4
Engine Information	4
DETAILED INFORMATION	5
KEY FEATURES & UPGRADES	5
Specifications	5
Exclusions	6
Disclaimer	6
PHOTOS	7
CONTACTS	9
Contact details	9
Telephones	9
Office hours	9
Address	9

---

# SPECIFICATIONS

---

## Overview

---

This San Juan is BEAUTIFUL both inside and out, "Skookum" has an exquisite satin finished teak interior and a dark navy hull. The open pilothouse and spacious cockpit extend the living and entertaining space outdoors. She has been exceptionally maintained & is ready for cruising.

No mechanical or structural issues of any kind. With heavy, but shallow (24in) displacement hull, she handles like a dream! The boat has been stored each winter since current owner's purchase at San Juan Yachts, Anacortes in a covered, heated warehouse.

## Basic Information

---

**Category:** Motor Yacht

**Model Year:** 2000

**Year Built:** 2000

**Country:** United States

## Dimensions

---

**LOA:** 38' 0" (11.58m)

**Beam:** 12' 1" (3.68m)

**MFG Length:** 40' 5" (12.32m)

## Speed, Capacities and Weight

---

**Cruise Speed:** 25 Kts. (29 MPH)

**Max Speed:** 30 Kts. (35 MPH)

**Displacement:** 15800 Pounds

**Water Capacity:** 85 Gallons

**Holding Tank:** 18 Gallons

**Fuel Capacity:** 300 Gallons

## Accommodations

---

**Total Cabins:** 2

**Total Heads:** 1

---

## Hull and Deck Information

---

**Hull Material:** Fiberglass

## Engine Information

---

**Manufacturer:** Yanmar

**Model:** 6LY(M)-STE turbo charged

**Fuel Type:** Diesel

---

# DETAILED INFORMATION

---

## KEY FEATURES & UPGRADES

---

- New Garmin radar, sonar, auto pilot and FLIR ultraviolet camera - \$20,000
- Electric lowering mechanism for pilot house table to convert to dbl bed - \$5,000
- New, heavier trim tabs for more efficient cruise - \$3,000
- Full height man door installed in transom for ingress/egress to swim step - \$50,000
- 2015 new top house paint job complete together with new varnish coats - \$20,000
- TD 350hp Yanmars
- Cruise at 25 knots
- 2 Staterooms
- Flir Night Vision
- New Stereo
- VHF
- Pilothouse sunroof
- Trolling valves
- Bow thruster
- Webasto furnace
- Stored in a heated facility the last 4 winters

## Specifications

---

**Accommodations** Forward is the private vee-berth stateroom with hanging locker. Moving aft to port is the galley with the refrigerator and microwave across to starboard. Next aft to port is the second stateroom with an athwartship double berth and hanging locker. The head with a separate shower stall is to starboard. Continuing aft, up steps into the enclosed pilothouse is the lower helm to starboard followed by a wet bar and a raised dinette across to port. The pilothouse, as well as the accommodations below are all fully heated.

The exquisite woodwork throughout is satin finished teak with a teak and holly sole.

### Galley

- Force 10 3-burner propane stove with oven
- Refrigerator/freezer
- Stainless steel sink
- Solid surface countertop
- Opening port
- U-Line SP-18 icemaker at pilothouse bar

### Electronics

- Standard GZ1260 SAB1S1 VHF radio c/w RAM mic CMP23B

## Electrical

- (4) 8D house bank batteries
- (2) 4D engine start batteries
- Heart Interface 2500 inverter/charger

## Deck

- Muir Atlantic 850 chrome, low profile rope/chain windlass
- (2) Stainless steel fishing rod holders
- Hot and cold cockpit shower
- Teak decks in cockpit, pilothouse and on swim step
- 12 V compressor for inflating shore boat
- Fresh water wash down system
- Mermet windshield screen cover
- Hydraulic pilothouse sunroof
- Pilothouse drop curtain
- Screen door for pilothouse drop curtain
- Cockpit cover
- Weather covers for aft seat cushions and engine box cushions
- Contrasting non-skid color

## Mechanical and Engine Equipment

- Trolling valves for main engine
- Micro Commander electronic engine synchronization
- Sidepower 4hp bow thruster w/heavy duty fiberglass tube
- Webasto Thermal 90 hydronic heater
- Kahlenberg twin chrome air horn upgrade

## Exclusions

---

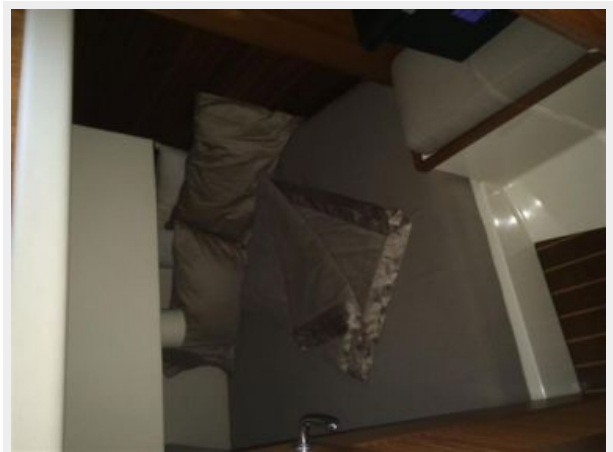
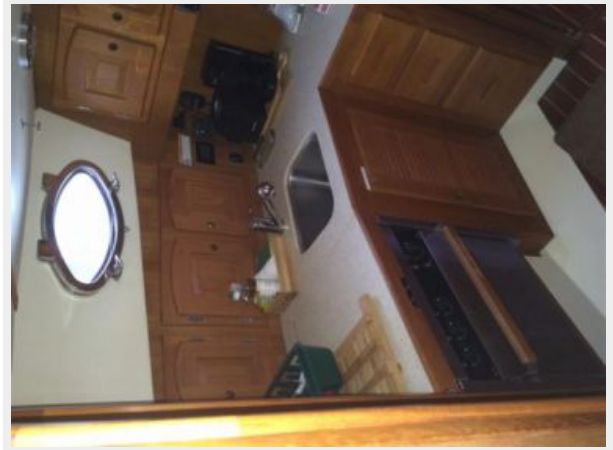
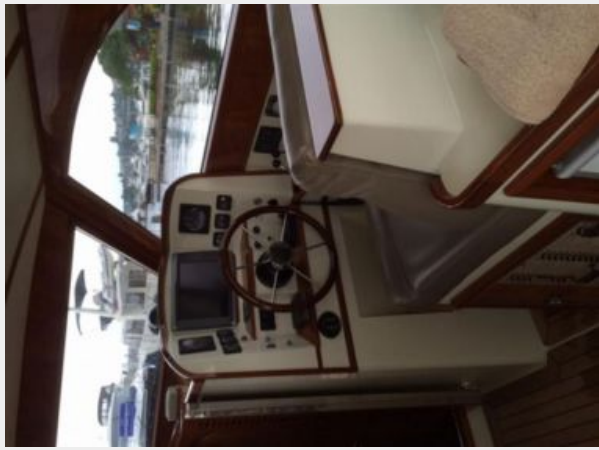
Owner's personal belongings.

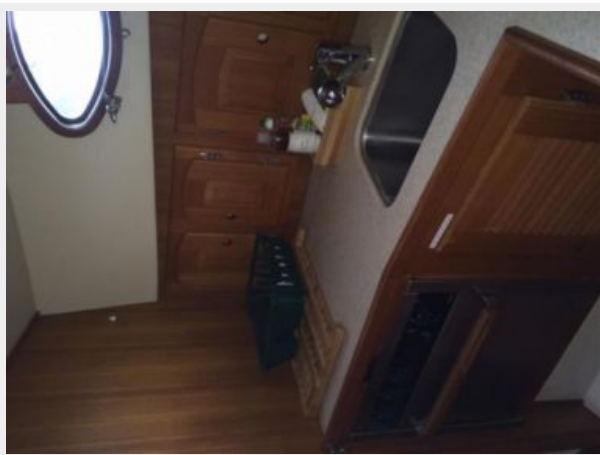
## Disclaimer

---

The Company offers the details of this vessel or yacht in good faith but cannot guarantee or warrant the accuracy of this information nor warrant the condition of the vessel. A buyer should instruct his representatives, agents, or his surveyors, to investigate such details as the buyer desires validated. This vessel or yacht is offered subject to prior sale, price change, or withdrawal without notice.

# PHOTOS







# CONTACTS

---

Andrey Shestakov, leading yacht broker of the sales department of Shestakov Yacht Sales Inc. Shestakov Yacht Sales Inc., the official representative of the Miami/Fort Lauderdale FL headquarters.

## Contact details

---

Email: [andrey@shestakovyachtsales.com](mailto:andrey@shestakovyachtsales.com)

Web: [shestakovyachtsales.com/en/](http://shestakovyachtsales.com/en/)

## Telephones

---

USA: +1(954)274-4435

## Office hours

---

Monday – Saturday: **9:00 - 21:00** EDT

Sunday: **closed**

## Address

---



Harbour Towne Marina, 850 NE 3rd St,  
STE 213, Dania, FL 33004