

A MERMAID'S TALE — PRINCESS YACHTS



Судостроитель: PRINCESS YACHTS

Год постройки: 2015

Модель: Моторная яхта

Цена: ЦЕНА ЯХТЫ ПО ЗАПРОСУ

Местонахождение: United States

Длина общая: 72' 0" (21.95m)

Ширина: 18' 0" (5.49m)

Макс. осадка: 5' 6" (1.68m)

Крейс. скорость: 28 Kts. (32 MPH)

Макс. скорость: 36 Kts. (41 MPH)

Купить **A MERMAID'S TALE — PRINCESS YACHTS** а также выбрать подходящую вам яхту из нашего каталога яхт вам поможет опытный яхтенный брокер Андрей Шестаков. На сегодняшний день компания **Shestakov Yacht Sales Inc.** имеет большое количество яхт в собственном списке продаж, а также тесно сотрудничает со всеми крупными яхтенными производителями по всему миру. Для того чтобы купить яхту **A MERMAID'S TALE — PRINCESS YACHTS** а также проконсультироваться по любому вопросу связанному с покупкой, продажей, чартером яхт позвоните по телефону **+7(918)465-66-44**.

ОГЛАВЛЕНИЕ

ОГЛАВЛЕНИЕ	2
ХАРАКТЕРИСТИКИ	6
Обзор	6
Основная информация	6
Размеры	6
Скорость, вместимость и масса	7
Размещение	7
Корпус и палуба	7
Информация о двигателе	7
ПОДРОБНОЕ ОПИСАНИЕ	8
Manufacturer Provided Description	8
Interior	8
Salon	8
Galley	9
Dinette	9
Master Stateroom	10
Master Stateroom Head	10
VIP Stateroom	11
VIP Head	11
Port Stateroom	12
Starboard Stateroom	12
Guest Head	12
Crew Quarters	13
Electrical	13
Aft Deck	14
Fly Bridge	15
Helm	16
Electronics	16

Mechanical	17
Engine Room	17
Decks	18
Hull	19
Исключения	19
Отказ от ответственности	19
ФОТОГРАФИИ	20
Starboard Profile	20
Arial	20
Bow Profile	20
Bow	20
Bow	21
Bow	21
Aft Deck	21
Aft Deck	21
Aft Deck	21
Salon	21
Salon	22
Salon	22
Galley - Closed Divider	22
Galley - Open Divider	22
Galley - Closed Divider	22
Galley	22
Galley - Dining	23
Lower Helm	23
Day Head	23
Port Passageway	23
Starboard Passageway	24
VIP Stateroom - Forward	24

VIP Stateroom - Forward	24
VIP Stateroom - Forward	24
Port Stateroom	25
Port Stateroom	25
Starboard Stateroom	25
Starboard Stateroom	25
Master Stateroom	26
Master Stateroom	26
Master Stateroom	26
Master Stateroom	26
Master Head	27
Fly Bridge - Helm	27
Fly Bridge - Helm	27
Fly Bridge	27
Fly Bridge	27
Fly Bridge	27
Fly Bridge - Grill	28
Fly Bridge	28
Fly Bridge	28
Fly Bridge	28
Crew Quarters	29
Fly Bridge	29
Crew Quarters	29
Crew Quarters	29
Crew Head	30
Engine Room	30
Engine Room	30
Engine Room	30
Engine Room	31

Engine Room	31
Engine Room	31
Engine Room	31
Stern	32
КОНТАКТЫ	33
Контактная информация	33
Телефоны	33
Время работы	33
Адрес	33

ХАРАКТЕРИСТИКИ

Обзор

Entering A MERMAID'S TALE salon through the sliding glass doors, there is a settee to port with a 40" Samsung LED flat screen television on a lift. Opposite to starboard is a U-shaped settee with ottoman and table. Further forward to port is a cocktail cabinet with glass and bottle storage and a wine cooler. Also to port is a high-gloss Wenge dining table with L-shaped seating and four leather chairs.

Opposite to starboard is a full service galley with granite countertops and Wenge plank flooring. An electric-powered divider separates the galley from the salon. Forward of the galley is the helm station, separated by a divider and equipped with a complete electronic package. An electric Helmsman door accesses the starboard side deck.

Down to the stateroom area, you'll find a Port Stateroom with a twin bed and television. The Starboard Stateroom contains a custom double berth with a television and access to the guest head. Forward in the bow is the VIP Stateroom with a centerline queen bed, Harman Kardon 2.1 stereo system and access to a private head with shower. The full-beam Master Stateroom is aft with an en-suite head and shower, portside vanity with makeup mirror, and starboard side lounge seat with end table. The Master boasts a 42" Samsung LED television and Harman Kardon 2.1 stereo, large closet and dressing area. All staterooms are equipped with a stereo and Blu-Ray system as well as a Direct TV receiver.

The crew quarters is located aft, access from the swim platform, with twin berths and a full head with shower. Access to the engine room is forward through a water tight door.

Основная информация

Тип судна: Моторная яхта

Подкатегория: Flybridge

Модельный год: 2015

Год постройки: 2015

Страна: United States

Открытая палуба мостика: Да

Размеры

Длина общая: 72' 0" (21.95m)

Ширина: 18' 0" (5.49m)

Макс. осадка: 5' 6" (1.68m)

Длина привального бруса: 72' 0"
(21.95m)

Скорость, вместимость и масса

Крейс. скорость: 28 Kts. (32 MPH)

Макс. скорость: 36 Kts. (41 MPH)

Вместимость воды: 355 Gallons

Вместимость сточного бака: 50 Gallons

Объем топливного бака: 1320 Gallons

Размещение

Всего кают: 4

Всего коек: 5

Спальные места: 8

Всего ком. состава: 3

Каюты экипажа: 1

Койки экипажа: 2

Спальных мест экипажа: 2

Комм. состав экипажа: 1

Корпус и палуба

Материал корпуса: Fiberglass

Информация о двигателе

Двигатели: 2

Производитель: Caterpillar

Модель: C32A

ПОДРОБНОЕ ОПИСАНИЕ

Manufacturer Provided Description

Combining the elegance and detail of a true motor yacht with the agility and performance of a sports cruiser.

An exciting addition to the Princess range, the 72 Motor Yacht is potent, spacious and luxurious. She promises a breathtaking cruising experience whether simply enjoying a day out on the water or making the most of her long range capabilities.

Interior

- Walnut wood interior with gloss finish
- Upgraded pillows and throws

Salon

- Portside entertainment center
- Walnut wood interior with gloss finish
- Portside couch
- Harmon Kardon 5.1 Blu-ray system
- Samsung 40" LED TV retractable in cabinet
- All-in-one remote control for salon system
- Sirius satellite radio receiver SR-H2000
- HD Direct TV receiver
- Central vacuum system
- High-impact window tinting
- Stainless steel framed sliding salon doors
- Portside couch with pillow set
- Starboard side u-shaped sofa with ottoman and high-gloss Wenge table

- Cocktail cabinet with glass storage and refrigerator
- Overhead lighting with Pelmet lights

Galley

- Betel white granite countertops
- Dual Franke stainless steel sinks
- Grohe faucet for sink
- Blinds
- Electronic-powered divider for the galley
- Miele combination microwave/convection oven
- Waeco full-height refrigerator with freezer
- Garbage disposal
- Miele oven
- Exhaust fan
- Overhead and concealed lighting
- Storage drawers and cabinets
- Wenge timber-laid flooring
- Miele dishwasher
- 4-Burner Miele cooktop
- Icemaker
- Silverware drawer storage
- Plate storage drawer
- Overhead storage cabinets

Dinette

- Fabric covered bench style seating with 4 leather single chairs

- High-gloss Wenge table
- Overhead lighting
- Pillow set
- Large side windows
- Raised table

Master Stateroom

- Full beam master with en-suite head
- Portside wood vanity with chair and makeup mirror
- Starboard lounge seat with end table
- Bedside tables
- Large king-size bed
- Fitted quilted blanket
- 42" Samsung flat screen LED television
- Harmon Karden 2.1 Blu-Ray system
- HDTV Direct TV satellite receiver
- All-in-one remote control for master a/v system
- Full-length mirror
- Walk-through dressing area
- Overhead and individual berth lighting
- Large picture windows with opening aft section
- Large closet

Master Stateroom Head

- Large Perrin & Rowe dual sink vanity with glass holders
- Large shower with glass enclosure, rain shower head and hand-held shower head

- Clear glass shower enclosure
- Quietflush toilet
- Exhaust fan
- Mirrors
- Heated towel bar
- Koko white Avonite flooring
- Storage below vanity

VIP Stateroom

- Large queen bed with four large drawers below
- Large hanging locker
- Mirror
- Vanity with makeup mirror and stool
- Harman Kardon stereo system with CD player, radio, and television
- HDTV Direct TV receiver
- Samsung flat screen television
- Storage lockers
- Overhead and individual berth lights
- Overhead deck hatch with blind
- Privacy door

VIP Head

- En-suite head with separate shower stall
- Vanity with Perrin & Rowe sink
- Koko white Avonite flooring
- Quietflush toilet

Port Stateroom

- Twin beds with storage below
- Hanging locker
- Mirror and desk
- Overhead lighting with individual berth lights
- Bedside table
- Stereo system with CD player, radio, and television
- HDTV Direct TV receiver
- Samsung flat screen television

Starboard Stateroom

- Custom double berth
- Mirror and desk
- Book shelves
- Overhead storage
- Interior access to guest head
- Stereo system with CD player, radio, television
- HDTV Direct TV receiver
- Samsung flat screen television

Guest Head

- Starboard guest head with shower stall
- Vanity with storage below
- Separate shower stall
- Exhaust fan
- Mirror

- Passageway door
- High-gloss wood finish
- Perrin & Rowe sink
- Glass holder
- Wood high-gloss privacy doors
- Koko white Avonite flooring
- Quietflush toilet

Crew Quarters

- Twin berths
- Crew head with shower
- 19" LCD television
- HDTV Direct TV receiver
- Crew storage
- Crew access from swim platform
- Engine room access
- Hanging locker
- High-gloss wood finish

Electrical

- US electric system, 60hz including Duplex US outlets
- Central vacuum system
- Bosch washer & dryer
- Dockside television/phone outlet
- Wine cooler
- Hubbell cords

- Glendinning cablemasters
- Dual station trim tabs with indicators
- Dual station searchlight
- Hot water heater
- Automatic water pump with filter
- Charles solid power PM3
- 32KW Onan generator with 131 hours
- Sea recovery 800 gpd water maker

Aft Deck

- Large u-shape lounge seat in Movida silver with blue piping and Stamoid covers
- Large high-gloss finish teak folding table with beverage holders
- Teak decking
- Molded-in stairs to bridge
- Aft docking station with engine and thruster controls
- Side entry boarding doors with high-gloss teak fold-down steps
- Crew quarters entry from swim platform
- Dual aft entry steps
- Line storage compartments
- Fender storage
- Fuel control panel
- Lewmar electric aft rope mooring winches
- Blue LED step lighting
- Hydraulic swim platform with 2100C Palm Beach tender with 40hp Yamaha 4-stroke engine
- Aft deck camera

- Liferaft storage
- (2) Zodiac 6-8 man Survitec liferaft
- Side deck cameras port and starboard
- Hot and cold swim platform shower

Fly Bridge

- Portside helm
- Large folding high-gloss teak table with beverage holders
- Large u-shaped seating in Movida silver with blue piping
- Helm and seat covers
- Wetbar with top-loading coolbox with upgraded cooling unit 82 Motor Yacht style
- Smeg lava rock barbecue
- Fusion stereo system
- Engine room fire extinguisher warning system
- Flybridge sunbed and cushions
- Hardtop with electric retractable soft insert
- Furuno 14" Navnet TZ touch navigation display
- Ray Marine VHF with remote speaker
- Plastimo offshore 105 wet compass
- Furuno autopilot control NavPilot 711
- Furuno multi-data display F1-503
- Variable speed hydraulic bow and stern thruster controls
- CAT LCD engine display
- White overhead lights
- Raised helm seat and companion seat
- ABT TRAC stabilizer controls at upper, lower, and aft deck stations

Helm

- Tilt wheel
- A/C vents
- Helmsman electrically operated side door
- Beverage holders
- Lower helm divider
- Chart holder
- Instrument console with engine instruments
- Rudder position indicator
- Electronic engine controls
- Variable speed hydraulic bow and stern thruster controls
- Map storage
- Bennet trim tab system with indicators
- Electric helm chair and companion chair
- ACR remote spotlight control
- Dual Bioning AHD 880TC system displays
- Black mesh windshield cover
- ABT-TRAC stabilizer controls

Electronics

- Dual Furuno 14" NavNet TZ touch GPS/plotter/radar at lower helm
- Single Furuno 14" NavNet TZ touch GPS/plotter/radar at upper helm
- Furuno 4.0 6KW open array radar system 64 mile at both stations
- Furuno NavPilot 711 autopilot at both stations
- Furuno F1-50 multi-data display at both stations
- ACR spotlight with remote

- KVH TracVision HD7 satellite TV with HDTV Direct TV receiver with battery back-up and remote
- TracVision HD7 dummy dome
- Dual station VHF with intercom
- TV 19" LCD with AM/FM stereo system with CD and DVD players in VIP stateroom
- TV 22" LCD with AM/FM stereo system with CD and DVD players in Starboard stateroom
- TV 22" LCD with AM/FM stereo system with CD and DVD players in Port stateroom
- 19" television in crew quarters
- Sirius weather
- Ray Marine VHF at both stations

Mechanical

- Side power variable speed bow and stern thrusters with hold feature on upper, lower, and aft decks
- Triple station remote windlass system with 196 ft chain
- ABT TRAC stabilizers at the upper and lower helm
- Block heaters
- Dual air horns
- Cruisair tempered chilled water system air conditioning with reverse cycle heat
- Power-assisted Sleipner hydraulic steering system
- Remote shut-off for fuel system
- Lewmar V6 windlass at the upper and lower helms and aft deck controls
- Bennett trim tab system with indicator
- 800 gpd sea recovery water maker with lower helm remote

Engine Room

- Oil change system for engines and generator
- Safety door
- Overhead engine room access
- Automatic/manual override fire extinguishing system
- Dual Separ high-capacity fuel filter/water separators
- Engine room soundproofing
- High-volume air intakes
- Engine room blower system
- Engine room lighting
- Fresh water supply facet at front of engine room
- Relocated a/c sea water strainer for easy service access
- Electric power management panels
- Charles solid power PM3
- Engine remote control panel
- Engine room camera

Decks

- Full walkaround side decks
- Forward lounge seating with high-gloss teak table
- Forward sunpads with lounge backs in Movida silver with blue piping and cover
- Forward storage port and starboard lockers
- Raised bulwarks
- Full stainless steel bow railing
- Large stainless steel mooring and spring cleats
- Forward cushion storage
- Additional anchor chain to total 196'

- Stainless steel anchor
- Custom stainless steel flybridge aft deck rails

Hull

- Electro-hydraulic raise and lower swim platform
- Aft equipment storage
- Large hull side windows in Master Stateroom
- Hardtop with electric soft sunroof insert, stainless steel supports
- Chase tubes from main helm to radar arch for electronics installations
- Yacht mast
- Extended aft bridge with custom stainless steel rails
- Side boarding gates
- Remote-controlled passerelle electro-hydraulic gangway
- Docking lights
- High speed balance rudders

Исключения

При продаже яхты исключаются личные вещи владельца.

Отказ от ответственности

Компания предоставляет описание судна или яхты добросовестно, но не может гарантировать точность этой информации, а также не ручается за техническое состояние. Покупатель должен проинструктировать своих агентов или оценщиков исследовать представленную информацию более подробно, по собственному желанию. Продажа судна или яхты, изменение цены или снятие с продажи будет происходить без предварительного уведомления.

ФОТОГРАФИИ

Starboard Profile



Arial



Bow Profile



Bow



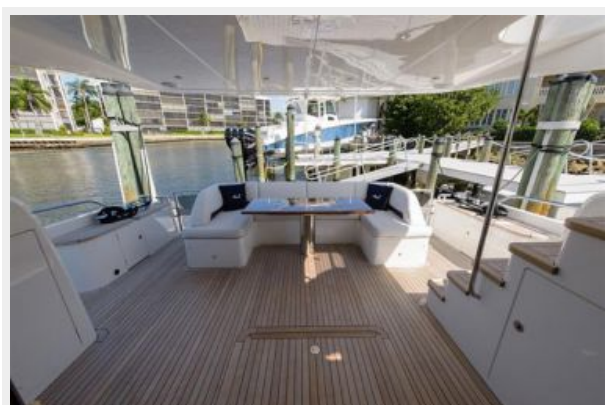
Bow



Bow



Aft Deck



Aft Deck



Aft Deck



Salon



Salon



Salon



Galley - Closed Divider



Galley - Open Divider



Galley - Closed Divider



Galley



Galley - Dining



Lower Helm



Day Head



Port Passageway



Starboard Passageway



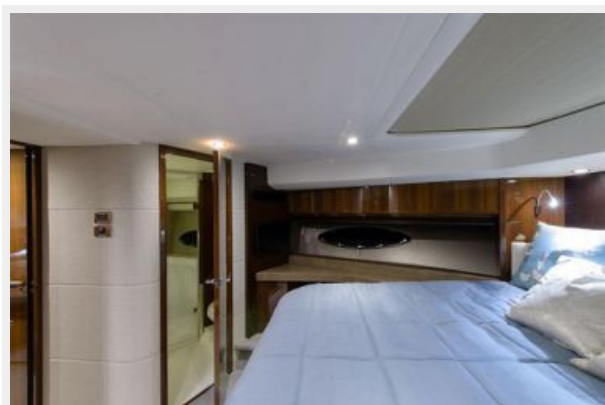
VIP Stateroom - Forward



VIP Stateroom - Forward



VIP Stateroom - Forward



Port Stateroom



Port Stateroom



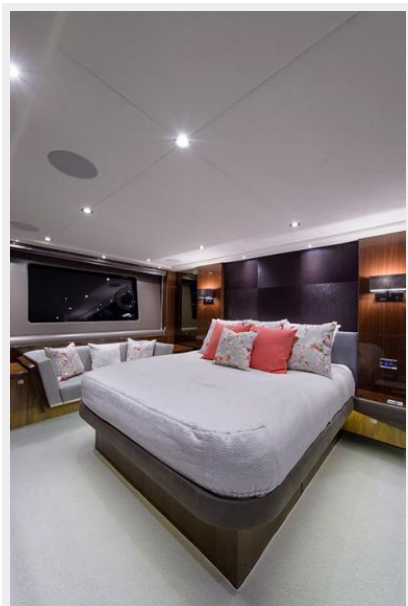
Starboard Stateroom



Starboard Stateroom



Master Stateroom



Master Stateroom



Master Stateroom



Master Stateroom



Master Head



Fly Bridge - Helm



Fly Bridge - Helm



Fly Bridge



Fly Bridge



Fly Bridge



Fly Bridge



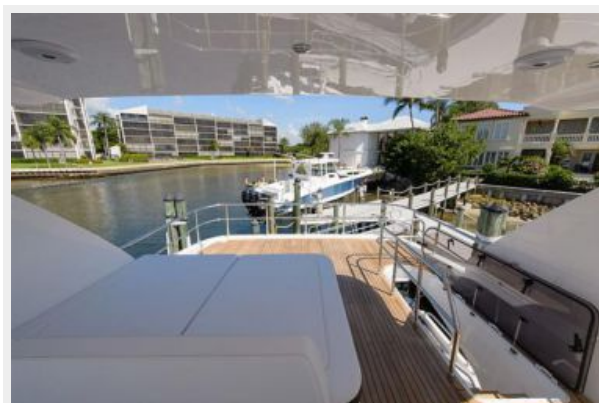
Fly Bridge - Grill



Fly Bridge



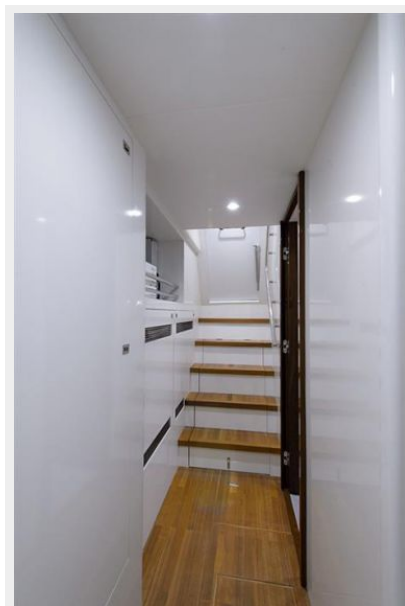
Fly Bridge



Fly Bridge



Crew Quarters



Crew Quarters



Crew Quarters



Crew Head



Engine Room



Engine Room



Engine Room



Engine Room



Engine Room



Engine Room

Engine Room



Stern



КОНТАКТЫ

Андрей Шестаков (Andrey Shestakov) – ведущий яхтенный брокер отдела продаж яхт и судов компании Shestakov Yacht Sales Inc. Официальный представитель Shestakov Yacht Sales Inc. для русскоговорящих клиентов в центральном офисе компании в Майами/Форт Лодердейл/Флорида/США.

Контактная информация

Email: andrey@shestakovyachtsales.com

Web: shestakovyachtsales.com

Телефоны

Краснодарский край: **+7(918)465-66-44**

США, Майами, Флорида: **+1(954)274-4435**

Время работы

Понедельник – Суббота: **9:00 - 21:00**
EDT

Воскресенье: **Закрето**

Адрес



Harbour Towne Marina, 850 NE 3rd St,
STE 213, Dania, FL 33004