

## TROPICAL HALLIDAY — CARVER



**Builder:** CARVER

**LOA:** 57' 0" (17.37m)

**Year Built:** 2001

**Beam:** 15' 4" (4.67m)

**Model:** Motor Yacht

**Max Draft:** 4' 9" (1.45m)

**Price:** PRICE ON APPLICATION

**Location:** United States

Our experienced yacht broker, Andrey Shestakov, will help you choose and buy a yacht that best suits your needs **Tropical Halliday — CARVER** from our catalogue. Presently, at Shestakov Yacht Sales Inc., we have a wide variety of yachts available on our sale's list. We also work in close contact with all the big yacht manufacturers from all over the world.

If you would like to buy a yacht **Tropical Halliday — CARVER** or would like help answering any questions concerning purchasing, selling or chartering a yacht, please call **+1(954)274-4435**

# TABLE OF CONTENTS

TABLE OF CONTENTS	2
SPECIFICATIONS	3
Overview	3
Basic Information	3
Dimensions	3
Speed, Capacities and Weight	3
Accommodations	3
Hull and Deck Information	3
Engine Information	4
DETAILED INFORMATION	5
Accommodations	5
Galley/Laundry	6
Electronics & Navigation	6
Electrical Equipment	6
Deck Equipment	7
Fishing Equipment	8
Mechanical/Engine	8
Other Features	9
Exclusions	9
Exclusions	9
Disclaimer	9
PHOTOS	10
CONTACTS	18
Contact details	18
Telephones	18
Office hours	18
Address	18

---

# SPECIFICATIONS

---

## Overview

---

Recent Service on engines, gens, and A/C. All new Eisenglass. New bottom paint. Her hull glistens!

## Basic Information

---

**Category:** Motor Yacht

**Model Year:** 2001

**Year Built:** 2001

**Country:** United States

## Dimensions

---

**LOA:** 57' 0" (17.37m)

**Beam:** 15' 4" (4.67m)

**Max Draft:** 4' 9" (1.45m)

## Speed, Capacities and Weight

---

**Displacement:** 52500 Pounds

**Water Capacity:** 200 Gallons

**Fuel Capacity:** 800 Gallons

## Accommodations

---

**Total Cabins:** 3

## Hull and Deck Information

---

**Hull Material:** Fiberglass

## Engine Information

---

**Engines:** 2

**Manufacturer:** Cummins

**Model:** QSM11

**Engine Type:** Inboard

**Fuel Type:** Diesel

---

# DETAILED INFORMATION

---

## Accommodations

---

The 57 Carver Voyager is considered Carvers flagship vessel. Sitting dockside its sloping curves, long inset tinted windows, and gleaming stainless steel hardware give this yacht a Euro profile.

Boarding the vessel is easy through the starboard side pilothouse gate, wide cockpit gunwales or by water on the huge swim platform. The roomy cockpit has a built in bench seat with enough room for a table and extra chairs. The aft bridge deck overhangs over the cockpit providing plenty of shade. The transom gate makes for easy passage to the swim platform with custom stainless steel gate rails. Molded in cockpit steps port and starboard provide quick access to the side decks and the bow. The bow features a Maxwell windlass, large sun pad, and bow storage lockers.

When entering the aft salon sliding door you will encounter an expansive salon with plenty of natural light. The overhead is a light vinyl and the cabin sole is a sand berber carpet. The port salon aft has an entertainment system with a 36" flat screen TV, stereo, DVD player, VHS player and a liquor cabinet. Forward of that is a small teak table that expands. Across to starboard is a large L-shaped leather settee with built in recliners. A birds eye maple table in the central salon provides internal storage. The Galley just forward of the Salon has a full compliment of kitchen appliances along with Avonite countertops, dark wood sole, and accent lighting.

Forward of the galley two steps up, the companionway gives access to the pilothouse or forward and down to the owns and guest cabins. The pilothouse is like having a second salon. A stately helm chair and wrap around leather settee provide a 360 view of your voyage. Some pilothouse highlights include a full compliment of navigation aids, second large flat screen TV, and an adjustable pedestal table for dining or office work.

Going down six steps to the forward companionway provides access to the master stateroom and two guest cabins. The master stateroom is midship and provides a full beam expanse. The island queen berth is on the port side with abundant storage lockers, cabinets, and drawers all around. There is a cabinet with a washer and separate dryer. All closets are cedar lined. The raised vanity area is to port and boasts tile sole, molded in sink, and abundant storage. Opposing doors by the vanity give access to the enclosed head aft and enclosed shower with tub forward.

The midship guest cabin port side has over under single berths. Other features include large closet, port hole, and reading lights.

The VIP stateroom is all the way forward. There is a rounded island queen berth. A large deck hatch and two port holes provide plenty of light. Storage includes hanging lockers and large drawers. A door in the VIP gives quick passage to the second head. The head includes a Vac-u-flush system, stall shower, and molded in sink.

---

## Galley/Laundry

---

- 3 burner Princess stove
- Sharp convection microwave
- Black & Deck coffee maker
- Braun trash compactor
- Sub Zero refrigerator
- Sub Zero freezer
- Double sink
- GFI outlets
- 7 drawers
- 8 cabinets
- Ice maker on bridge
- Small fridge on bridge
- Central vac system

---

## Electronics & Navigation

---

- KVH Satellite TV
- Bridge Ritchie 5" compass
- Bridge Raytheon RL70C radar
- Bridge 2nd RL70C display for chart
- Raytheon depth speed log
- Bridge Raytheon Ray 220 VHF hailer
- (2) Clarion bridge speakers
- Pilothouse Ritchie 5" compass
- Raytheon RL80C radar display pilothouse
- Raytheon RC831 Chart plotter pilothouse
- CCT monitor with aft camera
- Raytheon depth speed log pilothouse
- Raytheon Ray 720 VHF hailer
- Micronet wind speed indicator
- Movable Raymarine c120 chart plotter
- 24" TV master stateroom
- 13" TV in VIP
- 48" TV pilothouse

---

## Electrical Equipment

---

- Onan 17 kw generator 3117 hrs - just serviced 5/2015
- Glendenning cable master
- AC/DC distribution panel

- (3) battery chargers
- (6) battery switches
- Amp & volt gauges
- Battery monitor
- New engine batteries, generator & house May 2015

## Deck Equipment

---

- Radar arch
- Forward & aft Bimini top with 4 side enclosure
- Flybridge swept windshield with stainless steel frame
- Bridge tilt steering binnacle
- Large Bomar bridge hatch forward and aft
- Bridge liquor cabinet with drain
- Bridge wet bar with sink and cutting board
- Bridge Isotherm refrigerator
- Bridge Icerette icemaker
- Ladder Back helm chair
- Bridge midship electric rotating bench seat
- Bridge aft port L-shaped settee with pedestal table
- Bridge aft starboard bench seat with storage
- Bridge aft gate
- Bridge arch courtesy lights
- Jabsco searchlight
- Bridge non skid sole
- Bridge helm cover
- Bridge aft seat cover
- Bridge courtesy lights
- Life ring
- Aft bridge dinghy chocks
- Marquip davit
- Dual trumpet air horns
- Stainless steel rails from bow to aft deck
- (2) bow lockers
- Maxwell 3500 windlass
- Plow anchor
- 100' chain
- Starboard side boarding gate
- Starboard side pilothouse wing door
- Port and starboard cockpit molded in steps
- Aft cockpit bench seat with storage
- stainless steel transom rail
- Cockpit coaming pads

- Cockpit courtesy lights
- Large lazarette hatch
- Integral swim platform
- Swim ladder
- Stainless steel swim platform removable rails
- Cockpit stainless steel ladder to bridge
- Cockpit stainless steel hawse pipes
- (3) bow cleats 12"
- (4) midship cleats 10"
- (2) cockpit 12" cleats
- Transom gate
- (2) platform pop up cleats
- (2) transom cabinets
- City water inlet
- Transom shower
- Cable TV outlet
- Aft cabin sliding glass door with stainless steel frame
- Port & starboard side deck handrails
- Aft spreader lights
- (3) windshield wipers
- Forward windshield sunshade

## Fishing Equipment

---

- (2) cockpit rod holders

## Mechanical/Engine

---

- (4) Bilge blowers
- (4) automatic bilge pumps
- Bridge cabin controls
- Engine alarm
- Fresh water cooling system
- Overboard head electric holding
- Lube oil storage and transfer system
- Bennett trim tabs
- Bennett synchronizers
- Twin disc 1.75:1 transmission
- Portable air compressor
- Racor fuel filters
- Sea Star hydraulic steering
- Twin disc power commander

- Clutch & throttle controls
- Cummins engine data displays
- Vetus bow and stern thrusters
- Wesmar stabilizers
- (4) air conditioning units
- Synchronizer
- Rudder angle display
- Fire Boy system - recertified 5/2015
- (2) spare props

## Other Features

---

- All new engine, generator, house batteries 5/2015
- Main engines had 2000 hr service 5/2015
- All air conditioning serviced 2015
- (3) new sections Eisenglass 5/2015
- Hull & deck waxed 5/2015
- Bottom painted 5/2015
- New stainless steel swim platform rails

## Exclusions

---

Owner's personal effects.

## Exclusions

---

Owner's personal belongings.

## Disclaimer

---

The Company offers the details of this vessel or yacht in good faith but cannot guarantee or warrant the accuracy of this information nor warrant the condition of the vessel. A buyer should instruct his representatives, agents, or his surveyors, to investigate such details as the buyer desires validated. This vessel or yacht is offered subject to prior sale, price change, or withdrawal without notice.

# PHOTOS

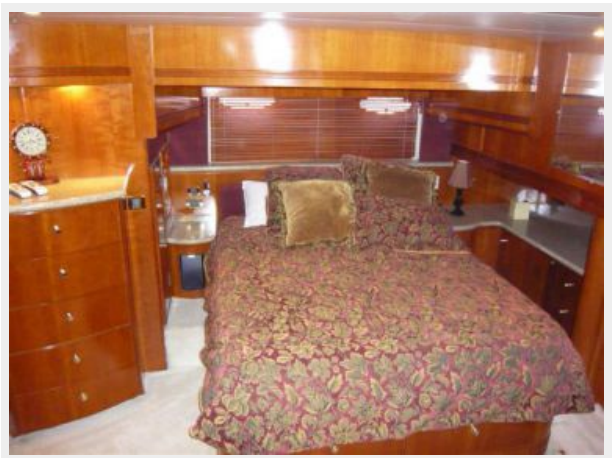
















# CONTACTS

---

Andrey Shestakov, leading yacht broker of the sales department of Shestakov Yacht Sales Inc. Shestakov Yacht Sales Inc., the official representative of the Miami/Fort Lauderdale FL headquarters.

## Contact details

---

Email: **andrey@shestakovyachtsales.com**

Web: [shestakovyachtsales.com/en/](http://shestakovyachtsales.com/en/)

## Telephones

---

USA: **+1(954)274-4435**

## Office hours

---

Monday – Saturday: **9:00 - 21:00 EDT**

Sunday: **closed**

## Address

---



Harbour Towne Marina, 850 NE 3rd St,  
STE 213, Dania, FL 33004