

## DOGS LIFE — LINSSEN



**Builder:** LINSSEN

**Year Built:** 2002

**Model:** Motor Yacht

**Price:** PRICE ON APPLICATION

**Location:** United States

**LOA:** 47' 0" (14.33m)

**Beam:** 14' 9" (4.50m)

**Max Draft:** 4' 6" (1.37m)

**Cruise Speed:** 9 Kts. (10 MPH)

Our experienced yacht broker, Andrey Shestakov, will help you choose and buy a yacht that best suits your needs **DOGS LIFE — LINSSEN** from our catalogue. Presently, at Shestakov Yacht Sales Inc., we have a wide variety of yachts available on our sale's list. We also work in close contact with all the big yacht manufacturers from all over the world.

If you would like to buy a yacht **DOGS LIFE — LINSSEN** or would like help answering any questions concerning purchasing, selling or chartering a yacht, please call **+1(954)274-4435**

# TABLE OF CONTENTS

TABLE OF CONTENTS	2
SPECIFICATIONS	5
Basic Information	5
Dimensions	5
Speed, Capacities and Weight	5
Accommodations	5
Hull and Deck Information	5
Engine Information	6
DETAILED INFORMATION	7
OVERVIEW	7
ACCOMMODATIONS-MASTER SUITE (AFT)	7
SALON	8
GALLEY & DINING AREA	8
VIP SUITE (FORWARD)	8
NAVIGATION ELECTRONICS(UPPER & LOWER HELM STATIONS)	8
MECHANICAL EQUIPMENT	9
ELECTRICAL EQUIPMENT	10
HULL & DECK	10
Exclusions	11
Disclaimer	11
PHOTOS	12
Port Stern	12
Upper Deck Forward	12
Upper Helm	12
Upper Deck Seating	12
Starboard Sidedeck	12
Foredeck	12
Windlass	13

Foredeck Aft	13
Mast	13
Port Sidedeck	13
Entry/Companionway	14
Companionway interior	14
Starboard Salon Lounge	14
Salon Forward	14
Lower Helm	14
Control Panel	14
Dinette	15
Galley	15
Oven	15
Microwave	15
VIP Stateroom Forward	15
Washer / Dryer	15
Guest SR Head	16
Guest SR Tub	16
Master Stateroom Berth	16
Master SR Head w/Shower Stall	16
Master SR Walk-in Closet	17
Radiator Heating	17
Starboard Engine (2074 Hours)	17
Fresh Water Engine Flush	17
Port Engine (2066 Hours)	17
Thrush Bearing / Dripless Shaft	17
Props / Rudder	18
ONAN 9kw Genset (1616 hours)	18
2002 Linssen Grand Sturdy 470	18
Grand Sturdy 470	18

---

Tender/Davits	19
Floor plan	19
CONTACTS	20
Contact details	20
Telephones	20
Office hours	20
Address	20

---

# SPECIFICATIONS

---

## Basic Information

---

**Category:** Motor Yacht

**Sub Category:** Displacement

**Model Year:** 2002

**Year Built:** 2002

**Country:** United States

**Vessel Top:** Bimini Top

## Dimensions

---

**LOA:** 47' 0" (14.33m)

**LWL:** 39' 3" (11.96m)

**Beam:** 14' 9" (4.50m)

**Max Draft:** 4' 6" (1.37m)

**Clearance:** 10' 0" (3.05m)

## Speed, Capacities and Weight

---

**Cruise Speed:** 9 Kts. (10 MPH)

**Displacement:** 53000 Pounds

**Water Capacity:** 220 Gallons

**Holding Tank:** 50 Gallons

**Fuel Capacity:** 495 Gallons

## Accommodations

---

**Total Cabins:** 2

**Total Berths:** 2

**Sleeps:** 4

**Total Heads:** 2

## Hull and Deck Information

---

**Hull Material:** Steel

**Deck Material:** Teak and Steel

**Hull Color:** DARK BLUE

---

## Engine Information

---

**Engines:** 2

**Manufacturer:** Volvo Penta

**Model:** TAMD-41HB

**Engine Type:** Inboard

**Fuel Type:** Diesel

---

# DETAILED INFORMATION

---

## OVERVIEW

---

*The Linssen Grand Sturdy 470 is a very High Quality Yacht in Excellent Condition - built in Holland by Linssen (60+ years a yacht builder). Fewer than 20 of these were imported in 2002-2003. Award winning vibration and noise reduction engineering with a Thrust Bearing Drive. High quality throughout and a very good value at this price. Built for the US market and more than lives up to the name "Grand Sturdy" Her 4 1/2 draft, full keel, skeg hung rudders and low air draft makes her a perfect yacht for the LOOP, cruise the ICW, Bahamas and well beyond. Powered by recently serviced twin 147 HP Volvo-Penta diesels (2075 hours) and she will cruise comfortably at 9 1/2 knots.*

*She is equipped with all the creature comforts to make your time aboard thoroughly enjoyable. Onan 9 KW genset with sound shield (1616 hours), full Raymarine electronic package at both Upper & Lower helms, (3) reverse cycle A/C, heat units, outside shower, dinghy on davits and outboard, Vetus bow thruster and much more.*

*She has been update, the hull recently re-painted with Pettit Endeavor Blue EZ-POXY2 paint and fresh Pettit Hydro-Coat Eco Non-Copper bottom paint (APRIL 2015), is spotless and in TURNKEY condition.*

*A very high quality yacht at a great price!*

---

## ACCOMMODATIONS-MASTER SUITE (AFT)

---

*Large Centerline Queen berth*

- *Cherry paneled walls*
- *Solid cherry drawers & doors w/ebony inlay*
- *(2) Hanging lockers*
- *(4) Fixed aluminum portholes w/screens*
- *Head weatherproof ventilation*
- *PAR fresh water head*
- *Separate Shower Stall*
- *Heated towel rack*
- *Mirrored headboard*
- *Walk-in cedar closet*
- *Storage throughout*
- *Teak & Holly Sole*
- *Skylight with 4 port light*
- *Port light in head*

---

## SALON

---

*U-shaped ultra suede upholstery lounge seating for 6*

- *Movable cherry dinette table w/fiddles and chart storage*
- *Sky light*
- *Seatel Satellite TV (wired)*
- *U-line Icemaker*
- *Sliding windows port & starboard w/screens*

---

## GALLEY & DINING AREA

---

*NEW Cruise-Air refrigerator/freezer - 2014*

- *Siemens ceramic 4 burner stovetop*
- *Origo microwave oven*
- *Splendide 2000 washer/dryer combo*
- *Engel portable refrigerator/Freezer*
- *Dinette w/seating for 4*
- *Dinette converts to sleeping bed*

---

## VIP SUITE (FORWARD)

---

*Island Queen berth*

- *Port & Starboard closets*
- *(2) opening skylights*
- *(2) brass halogen reading lights*
- *Private Jabsco head*
- *Separate tub compartment (2015)*
- *Built-in drawers & cabinets*
- *Storage shelves outside of berth*
- *(2) hanging lockers*
- *Tiled ceramic floor*
- *Storage shelves w/cherry fiddles*
- *PAR fresh water electric head*
- *Cherry vanity*
- *Towel warmer*
- *Weatherproof ventilation*
- *(1) Opening portlight*

---

## NAVIGATION ELECTRONICS(UPPER & LOWER HELM



## STATIONS)

---

### *Raytheon ST6000 Autopilot*

- *Raytheon ST60 Tridata*
- *Raytheon ST60 electric fluxgate compass*
- *Raytheon Pathfinder RL80C color radar/chartplotter*
- *Ray Marine 240 (2010)*
- *Cell phone repeater*
- *Vetus 24v bow thruster*
- *Morse single handle engine controls*
- *Wiper controls*
- *Spotlight*
- *Powered helm seat*
- *Stazo teak wood steering wheel*
- *Tachometers w/engine hour meters*
- *Engine temperature alarms*
- *Oil pressure alarms*
- *Voltage meters w/alarms*
- *Fuel tank gauges*
- *Dual ignition gauges*
- *Phillips ARC AM/FM/Cassette/CD stereo*

## MECHANICAL EQUIPMENT

---

### *Twin 147HP Volvo Penta Turbo TAMD-41HB (2075 Hours)*

- *NEW Turbos installed - May 2015 + (2) fully reconditioned Turbo Spares*
  - *ZF Hurth Marine transmissions 2:5:1 reduction gear*
  - *SS Dripless shaft seals (2) NEW spares in the box*
  - *Bronze 26x21 five bladed propellers*
  - *Super quieting muffler*
  - *Hydraulic steering*
  - *(2) Metal fuel tanks 475 gls w/inspection plates*
  - *(5) Separ fuel filters*
  - *Copper fuel lines*
  - *Fuel sight gauges*
  - *Hot & Cold pressure water system*
  - *Freshwater tanks w/sight gauges 220 Gal (4) 55 gal tanks*
  - *14 Gal Hot water tank*
  - *Diesel furnace w/ radiators*
  - *(3) Automatic bilge pump*
  - *Holding tank 58 gal w/electric discharge*
  - *Automatic Fire suppressing system*
  - *Additional 58 gal fresh water tank*

- *Lumar windlass*
- *Morse controls*

## **ELECTRICAL EQUIPMENT**

---

### *Onan 9Kw generator w/sound shield (1616 Hours)*

- *(7) Marine deep discharge batteries - 2014 (3) House (4) Starting*
- *(4) 12v outlets*
- *60 amp Alternator*
- *(2) 30 amp Shore power outlets*
- *(3) 12K btu Cruisair reverse cycle heat/AC*

## **HULL & DECK**

---

### *Hull painted ( Pettit Endeavor Blue EZ POXY 2 Paint ) April 2015*

- *Bottom Painted Pettit Hydro Coat Eco - Non Copper Paint (April 2015)*
  - *Swim Platform w/solid teak steps*
  - *Access ladder*
  - *Stainless Steel Davits*
  - *Raytheon MOB sensor*
  - *9' Dinghy*
  - *3.3 HP Mercury Engine*
  - *Walk-around teak deck*
  - *Stereo speakers*
  - *Jaga gas heating system throughout vessel*
  - *Swim Platform w/ladder and hot/cold freshwater shower*
  - *Shore power hook up*
  - *Throw able life ring*
  - *Electronic mast*
  - *Bimini for aft deck w/SS framework*
  - *Dodger w/zipper closure for Bimini*
  - *Provisions for stern thruster*
- 
- *Polished S.S. Windscreen w/ wipers*
  - *Oversized S.S. Handrails*
  - *Anchor locker*
  - *S.S. Boarding ladder*
  - *Waterproof speakers*
  - *Deck wash connection at forepeak and aft steering station*
  - *Electical adjustable outside helmseat*
  - *Under mounted Swim Ladder*
  - *Outside shower*

- *(4) Single S.S. Bollards*
- *(4) Double S.S. Bollards*
- *Aluminum, Powder Coated, Stayed Mast w/ hinged Tabernacle*
- *Automatic Search light mounted on mast*
- *Polished Aft Bulwarks w/ Deck boxes and cushions*
- *Protected propeller - Skeg hung Rudder w/ Sand Shoe*

## **Exclusions**

---

Owner's personal belongings.

## **Disclaimer**

---

The Company offers the details of this vessel or yacht in good faith but cannot guarantee or warrant the accuracy of this information nor warrant the condition of the vessel. A buyer should instruct his representatives, agents, or his surveyors, to investigate such details as the buyer desires validated. This vessel or yacht is offered subject to prior sale, price change, or withdrawal without notice.

# PHOTOS

**Port Stern**



**Upper Deck Forward**



**Upper Helm**



**Upper Deck Seating**



**Starboard Sidedeck**



**Foredeck**



**Windlass**



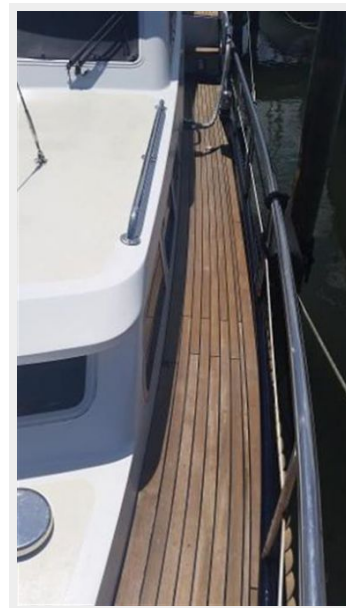
**Foredeck Aft**



**Mast**



**Port Sidedeck**



**Entry/Companionway**



**Companionway interior**



**Starboard Salon Lounge**



**Salon Forward**



**Lower Helm**



**Control Panel**



**Dinette**



**Galley**



**Oven**



**Microwave**



**Washer / Dryer**



**VIP Stateroom Forward**



**Guest SR Head**



**Guest SR Tub**



**Master Stateroom Berth**



**Master SR Head w/Shower Stall**

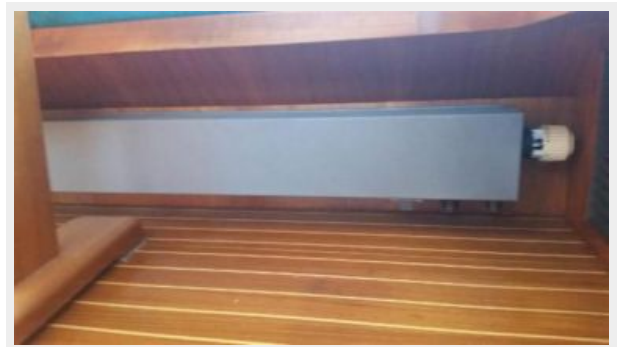




**Master SR Walk-in Closet**



**Radiator Heating**



**Starboard Engine (2074 Hours)**



**Fresh Water Engine Flush**



**Port Engine (2066 Hours)**



**Thrush Bearing / Dripless Shaft**



**ONAN 9kw Genset (1616 hours)**



**Props / Rudder**



**Grand Sturdy 470**



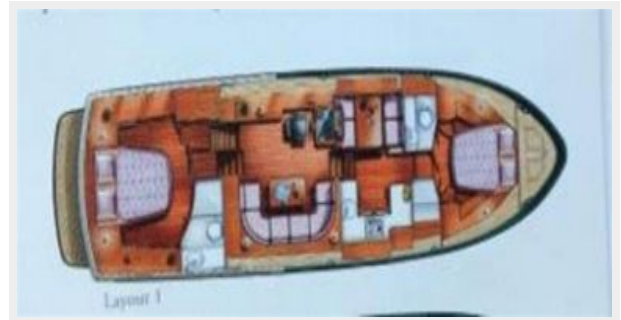
**2002 Linssen Grand Sturdy 470**



## Tender/Davits



## Floor plan



# CONTACTS

---

Andrey Shestakov, leading yacht broker of the sales department of Shestakov Yacht Sales Inc. Shestakov Yacht Sales Inc., the official representative of the Miami/Fort Lauderdale FL headquarters.

## Contact details

---

Email: [andrey@shestakovyachtsales.com](mailto:andrey@shestakovyachtsales.com)

Web: [shestakovyachtsales.com/en/](http://shestakovyachtsales.com/en/)

## Telephones

---

USA: +1(954)274-4435

## Office hours

---

Monday – Saturday: **9:00 - 21:00** EDT

Sunday: **closed**

## Address

---



Harbour Towne Marina, 850 NE 3rd St,  
STE 213, Dania, FL 33004