

## O' — OVERMARINE - MANGUSTA



**Судостроитель:**  
OVERMARINE - MANGUSTA

**Год постройки:** 2007

**Модель:** Моторная яхта

**Цена:** **ЦЕНА ЯХТЫ ПО ЗАПРОСУ**

**Местонахождение:** France

**Длина общая:** 109' 11" (33.48m)

**Ширина:** 23' 4" (7.10m)

**Макс. осадка:** 4' 4" (1.30m)

**Крейс. скорость:** 30 Kts. (35 MPH)

**Макс. скорость:** 35 Kts. (40 MPH)

Купить O' — OVERMARINE - MANGUSTA а также выбрать подходящую вам яхту из нашего каталога яхт вам поможет опытный яхтенный брокер Андрей Шестаков. На сегодняшний день компания Shestakov Yacht Sales Inc. имеет большое количество яхт в собственном списке продаж, а также тесно сотрудничает со всеми крупными яхтенными производителями по всему миру.

Для того чтобы купить яхту O' — OVERMARINE - MANGUSTA а также проконсультироваться по любому вопросу связанному с покупкой, продажей, чартером яхт позвоните по телефону **+7(918)465-66-44**.

# ОГЛАВЛЕНИЕ

ОГЛАВЛЕНИЕ	2
ХАРАКТЕРИСТИКИ	3
Основная информация	3
Размеры	3
Скорость, вместимость и масса	3
Размещение	3
Корпус и палуба	3
Информация о двигателе	4
ПОДРОБНОЕ ОПИСАНИЕ	5
Accommodations	5
Capacities	5
Electrical	6
Communications and navigational equipment	6
Mechanical, propulsion and engine room equipment	6
Entertainment	7
Safety and security	8
Tender and toys	8
Исключения	8
Отказ от ответственности	8
ФОТОГРАФИИ	9
КОНТАКТЫ	12
Контактная информация	12
Телефоны	12
Время работы	12
Адрес	12

# ХАРАКТЕРИСТИКИ

## Основная информация

Тип судна: Моторная яхта

Подкатегория: Водоизмещение

Модельный год: 2007

Год постройки: 2007

Страна: France

## Размеры

Длина общая: 109' 11" (33.48m)

Ширина: 23' 4" (7.10m)

Макс. осадка: 4' 4" (1.30m)

## Скорость, вместимость и масса

Крейс. скорость: 30 Kts. (35 MPH)

Макс. скорость: 35 Kts. (40 MPH)

Водоизмещение: 242508.4882 Pounds

## Размещение

Всего кают: 4

Спальные места: 8

Спальных мест экипажа: 4

## Корпус и палуба

Материал корпуса: GRP

Дизайнер интерьера: Guido de Groot

---

## Информация о двигателе

---

**Двигатели:** 2

**Производитель:** MTU

**Модель:** 12V 4000 M90

# ПОДРОБНОЕ ОПИСАНИЕ

## Accommodations

Decorated by the famous designer Guido de Groot with Ralph Lauren fabrics, featuring a top speed of 30 knots, this Mangusta 108 combines high performance with a refined decor. Aft of O', the large exterior space allows a central circulation around each side of the large sunbeds of 2 x 1.5m each. A large awning provides shade for the summer and a high-end IPOD ipod? controlled sound system. The transforming lounge space enables you to accommodate 12 guests at 2 large dining tables or 4 individual coffee tables. The superstructure provides protection and privacy to the lounge area while allowing a generous sun filled aft deck. At the bow can be found an expansive sunbathing pad and its retractable bimini top with another high-end IPAD controlled sound system. Two automatic sliding doors give access to the superb deck saloon, a traditional highlight of the Open Mangusta. The sophisticated interior is composed by rich blue upholstery contrasted by the white lacquered floor, fine chrome fixtures and a bar with pearlescent shine. Once the sunroof is opened, the blue sky comes to perfect this wonderful harmony of colours. De Groot did not prejudice on the functional aspects of the O', 2 large U-shaped sofas invite guests to sit down comfortably around a telescopic table where up to 12 guests can dine in the lounge/dining area. A dual service/private zone prolongs the saloon to the lower deck with many more surprises. A vestibule hides the day head and gives access to the master suite that takes full advantage of the 6m beam of the O'. Organized around the central king size bed, the stateroom offers generous volumes. A sliding door opens onto an adjoining lounge with a golden leather sofa and a large plasma screen. The master suite is calm and comfortable. Its 8 panoramic portholes highlight perfectly the refinement of the interior. A large walk-in closet, a mini bar, sauna shower and hydro jet bathtub only add to the comfort of this stateroom and mosaic bathroom. Close to the office space is the childrens cabin with a bunk bed and a sofa, filled with natural light filtering through panoramic portholes. The bright coloured fabrics, modern wengé furniture and the ceiling encrusted with LED lights form a wonderful décor, perfect for kids. Opposite the master is the VIP and guest stateroom that can be accessed by the same vestibule. The VIP stateroom is located forward and is equipped with a double bed, a wardrobe and an ensuite bathroom. The detailed leather from Cordoba, the matt colored lacquer and dark wenge floors bring a refreshing ethnic feel the room. The guest stateroom is Africa themed with beautiful aborigine masks and geometric fabrics. It also offers great comfort with a double bed, wardrobe and ensuite bathroom. All staterooms are equipped with air conditioning, large TV screens and DVD players.

## Capacities

Fuel (main tank): 13,000 litres (approx.) Fuel (service tanks): 750 litres (approx.) Freshwater: 2000 litres (approx.) Blackwater and greywater holding tank: 250 litres + 600 litres (approx.) Fuel cleaning system holding tank: 100 litres (approx.) Maximum load: (total crew and passengers) 16 persons

## Electrical

Electrical system voltage (alternating current): 400 V 3-phase/230 V 1- phase Frequency: 50 Hz  
 Electrical system voltage (direct current): 24 v Blackwater and greywater treatment system: 110 litres (approx.)

## Communications and navigational equipment

1 x VHF DSC Sailor RT 5022, 2 x loudspeaker Poly planar. 1 x AIS System Furuno FA 150. 3 x All-to-all Intercom Zenitel Pro 700 (galley , pilot house, engine room) 1 x GSM Voice Cel line ACLINEAS+ 1 x SatCom Fax/Telephone KVH Tracphone F33 1 x modem D-Link DWR-921/E routeur mobile wifi 4G 1 x Pilothouse Phone Alcatel Temporis 06 Black 10 x Phones Panasonic KX-TCA155 (Deck, Relax, Owner's, VIP, Guest Port, Guest Starboard, Galley/crew mess, Captain Cabin/office, Crew Cabin For) 1 x Printer Scanner Copier HP wifi. 2 x Wifi Access Points Apple express. 2 x Wifi Access Points netgear WG 302. 1 x airport express airplay apple system. 1 x Radar Furuno Black Box FAR 2117, display Simrad Hatteland 17" 1 x Chart Plotter Max Sea Time Zero, display Simrad Hatteland 17" 1 x Autopilot Simrad AP70, with remote 1x Giro Compass Simrad RGC 50 1x Magnetic Compass white star. 1x Depth Furuno NavNet ETR-6, display NavNet GD-1720C 1 x GPS Furuno GP37PRO DGPS SBAS/WAAS 1 x Navtex Furuno Fax 30-NavNet 1 x Navtex Furuno Fax 30-NavNet 1 x Wind Transducer Airmar Ultrasonic weather Station 4 x Data Repeater Furuno RD 30. **Antennas** 1 x Satellite TV Antenna KVH Tracvision G8. 1 x Advanced Digital Control Unit ADCU KVH Tracvision G8. 1 x Satellite TV Antenna Dome KVH Tracvision G8. 2 x MF/HF Antenna MAP 7.5. 2 x VHF Antenna Navicom 011. 4 x Antenna Metal Knuckle RA 107 2 x Antenna Plastic Knuckle Furuno.V 9173 1 x Satellite Multiswitche Furuno Spaun SMS 51202 NF

## Mechanical, propulsion and engine room equipment

Main engines 2 x MTU 12 V 4000 M90 2040 kW (2730 HP) at 21 00 rpm Propulsion control and monitoring system MTU BLUE VISION Engine hours: 1258hrs Marine gears 2 x ZF BW 465 (ratio= 2.025:1) Propulsion system 2 x KAMEWA Waterjets 63 S 3 Generators 2 x KOHLER 400V /50 Hz 3-phase 33 EFOZ 33 kW Generator hours: 3820hrs Bilge/chain washdown/firefighting pump GIANNESCHI ACM 401 BT 15 kW 400 V Bilge/chain washdown/firefighting pump GIANNESCHI ACM 401 BT 2.2 kW 24 V DC Fuel cleaning system WESTFALIA OTC 2 400 V Fuel transfer pump GIANNESCHI ACB 61 24 V DC Manual priming pump for engine filters MTU Submersible Bilge pump RULE 4000 24 V DC Water/oil separator filter WAVESTREAM Blackwater/greywater treatment system HAMANN Supermini 230V + Additional grey water filtration 100up ,20up, 5up Wavebrite Engine room blowers/extractors 4 x GIANNESCHI ELUR 560 0.75 kW 400V Reversible Freshwater pressure pumps 2 x N.2JET 4"CE" 24V DC + 230V AC horizont. Silver ion release system IDROMAR Air conditioning system FRIG - IT 400 V 50 Hz/ 3-phase 155.770 BTU/h Desalinator IDROMAR MC5S 230 Uh 400 V 50 Hz 3-phase Battery charger DOLPHIN 24/150 3-phase Starter batteries Battery Park 4 x EXIDE 900 12 V or equivalent (paired in parallel) Service batterie 4 x FIAMM 610 6V or equivalent (in

parallel) Generator batterie 4 x EXIDE MAXX 900 12V or equivalent (one per generator) Electronic propulsion control and monitoring system batteries (main power supply) 2 x EXIDE MAXX 900 12 V or equivalent (in parallel) Electronic propulsion control and monitoring system batteries (emergency power supply) 2 x EXIDE MAXX 900 12 V or equivalent (in parallel) Emergency batteries 4 X EXIDE G 210 DC 12 V or equivalent (series/parallel) Anchors 2 x SEC SHHP 154 kg Anchor chains MAGGI 2 x 125 metres, 16 mm gauge Windlasses 2 x LOFRANS' Ercole Verticale B 4 kW 400 V Warpingwinches 2 X LOFRANS'T 2000 2.2 kW 400V Main engine fuel separator filters SEPAR SWK 2000/40/UMS or equivalent (interchangeable) Generator fuel separator filters SEPAR SWK 2000/5/MK or equivalent Steering and autopilot Hydraulic module KAMEWA Multifunction Hydraulic module SANGUINETI Gangway/hoist SANGUINETI mod. MIZAR L = 5780 mm, capacity 680 kg Waterbike cranes 2 x BESENZONI mod. G304 max. load 300 kg Swimming ladder BESENZONI art. 860020704 Bow thuster BCS Frequency converter transformer system ASEA AC 30 TP3 (master/slave)

## Entertainment

1 x TV NEC 50 XR4 1 x HI-FI Amplifier Denon AVC-A11XV 1 x DVD/CD blue ray Denon DVD-3910 1 x Sub Base Loudspeaker JM Lab SW-700 1 x Loudspeakers Focal Image-C25 6 x Loudspeakers Focal image-846 1 x Remote Control ipad 2 64 Go 1 1x Access Point Netgear WG102 1 x Cresnet Expansion Module Crestron ST-COM 1 x iPod/ipad/iphone all generation Dock 1 x server Mac mini 5 TO player Plex 200 movies. 1 x player Mac mini / Deck office computeur 1 x Plug Auxiliary Sources **Deck** 1 x TV NEC 50 XR4 1 x HI-FI Amplifier Denon AVC-A11XV 1 x DVD/CD blue ray Denon DVD-3910 1 x Sub Base Loudspeaker JM Lab SW-700 1 x Loudspeakers Focal Image-C25 6 x Loudspeakers Focal image-846 1 x Remote Control ipad 2 64 Go 1 1x Access Point Netgear WG102 1 x Cresnet Expansion Module Crestron ST-COM 1 x iPod/ipad/iphone all generation Dock 1 x server Mac mini 5 TO player Plex 200 movies. 1 x player Mac mini / Deck office computeur 1 x Plug Auxiliary Sources **Aft deck** 8 x Loudspeakers Focal 8S **Foredeck** 1 x Radio Fusion (water proof) CDX-GT300S 1 x Face Plate Poly-Planar WC-3 2 x Loudspeakers Earthquake CM 500 **Salon** 1 x TV Sony KDL-40V2000 1 x HI-FI Amplifier Denon AVR-2807 1 x DVD/CD Denon DVD-2930 1 x Sub Base Loud speaker JM Lab SW-700 5 x Loudspeakers Earthquake Image-846 1 x Remote Control Ipad1/64 G 1 x Access Point Netgear WG102 **Master stateroom and bathroom** 1 x TV Sony KDL-40V2000 1 x HI-FI Amplifier Denon AVR-2807 1 x DVD/CD Denon DVD-2930 1 x Sub Base Loud speaker JM Lab SW-700 5 x Loudspeakers Earthquake Image-846 1 x Remote Control Ipad1/64 G 1 x Access Point Netgear WG102 1 x Remote Control Crestron CNX-B8B 2 x Loudspeakers Earthquake Image-6 **VIP stateroom** 1 x TV Sony KDL-40V2000 1 x Satellite Decoder Aston Wamba 1 x HI-FI/DVD/CD/Amplifier Denon S-301 1 x Sub Base Loudspeaker Denon S-301 4 x Loudspeakers Earthquake Image-6 1 x Remote Control RTI T2+RP-1 **Guest Port** 1 x TV Sony KDL-20S2000 1 x Satellite Decoder Aston Wamba 1 x HI-FI/DVD/CD/Amplifier Denon S-101 1 x Sub Base Loudspeaker Denon S-101 4 x Loudspeakers Earthquake Image-6 1 x Remote Control RTI T2+RP-1 **Guest Starboard** 1 x TV Sony KDL-20S2000 1 x Satellite Decoder Aston Wamba 1 x HI-FI/DVD/CD/Amplifier Denon S-101 1 x Sub Base Loudspeaker Denon S-101 4 x Loudspeakers Earthquake Image-6 1 x Remote Control Philipps pronto. **Galley** 1 x TV Sharp LC

20SH1E 1 x Satellite Decoder Aston Wamba 1 x HI-FI/DVD/CD/Amplifier Denon S-101 1 x Sub Base Loudspeaker Denon S-101 2 x Loudspeakers Earthquake Image-6 **Captain** 1 x TV Sharp LC 20SH1E 1 x Satellite Decoder Aston Wamba 1 x HI-FI/DVD/CD/Amplifier Denon S-101 1 x Sub Base Loudspeaker Denon S-101 2 x Loudspeakers Earthquake Image-6 **Crew Cabin** 1 x TV Sharp LC 20SH1E 1 x Satellite Decoder Aston Wamba 1 x HI-FI/DVD/CD/Amplifier Denon S-101 1 x Sub Base Loudspeaker Denon S-101 2 x Loudspeakers Earthquake Image-6 **Technical Room** 3 x Satellite Decoder Aston Wamba 1 x Amplifier Denon 1 x Video Matris Kramer VS-1616V 1 x Audio Matris Crestron CNX-PAD 8A 1 x Control System Crestron Pro 2E + CNPWS-75 1 Tuner FM Crestron C2N-TFM + ST-RMK 1 x Rack-Mountable Multi Type Cresnet Crestron CNHBLOCK 1 x Slave Output Module Crestron CH-HSREL8 1 x 10/100 Base-T Switch PoE Netgear FS116P 1 x BackUp 220 Secomp 2500 VA

## Safety and security

---

3 x CCTV camera panasonic WV-CS 854. 4 x CCTV PTZF Control (Pilothouse, Galley, Captain Cabin, Crew) Crestron CNXB12B. 2 x CCTV Camera Anchor. 1 x Digital Video Recorder Dream IT 900. 4 x CCTV monitor (Pilothouse Simrad Hatteland 15", Galley Simrad Hatteland 10", Captain Cabin & Crew Vity LCVO 68.

## Tender and toys

---

1 Castoldi Jet tender 15', 2 x Yamaha GP 1300R waverunners (2 persons) Snorkeling equipment for adults and kids, Large array of towable Toys (banana, donuts, flyfish), water-skis, wakeboard

## Исключения

---

При продаже яхты исключаются личные вещи владельца.

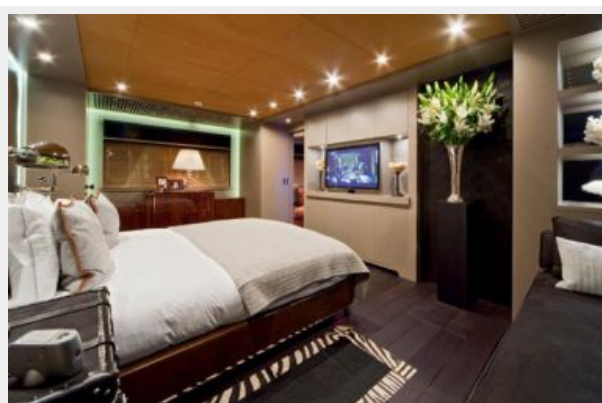
## Отказ от ответственности

---

Компания предоставляет описание судна или яхты добросовестно, но не может гарантировать точность этой информации, а также не ручается за техническое состояние. Покупатель должен проинструктировать своих агентов или оценщиков исследовать представленную информацию более подробно, по собственному желанию. Продажа судна или яхты, изменение цены или снятие с продажи будет происходить без предварительного уведомления.

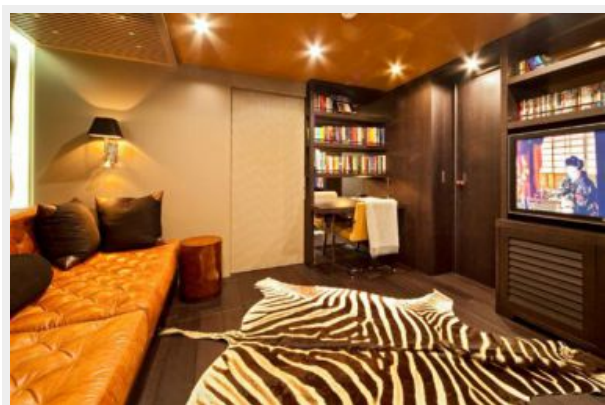


# ФОТОГРАФИИ









# КОНТАКТЫ

---

Андрей Шестаков (Andrey Shestakov) – ведущий яхтенный брокер отдела продаж яхт и судов компании Shestakov Yacht Sales Inc. Официальный представитель Shestakov Yacht Sales Inc. для русскоговорящих клиентов в центральном офисе компании в Майами/Форт Лодердейл/Флорида/США.

## Контактная информация

---

Email: [andrey@shestakovyachtsales.com](mailto:andrey@shestakovyachtsales.com)

Web: [shestakovyachtsales.com](http://shestakovyachtsales.com)

## Телефоны

---

Краснодарский край: **+7(918)465-66-44**

США, Майами, Флорида: **+1(954)274-4435**

## Время работы

---

Понедельник – Суббота: **9:00 - 21:00**  
EDT

Воскресенье: **Закрето**

## Адрес

---



Harbour Towne Marina, 850 NE 3rd St,  
STE 213, Dania, FL 33004