

KUMATAGE — GRAND BANKS



Судостроитель: GRAND BANKS

Год постройки: 1992

Модель: Траулер

Цена: **ЦЕНА ЯХТЫ ПО ЗАПРОСУ**

Местонахождение: United States

Длина общая: 46' 0" (14.02m)

Ширина: 14' 9" (4.50m)

Макс. осадка: 4' 5" (1.35m)

Крейс. скорость: 14 Kts. (16 MPH)

Макс. скорость: 18 Kts. (21 MPH)

Купить Kumatage — GRAND BANKS а также выбрать подходящую вам яхту из нашего каталога яхт вам поможет опытный яхтенный брокер Андрей Шестаков. На сегодняшний день компания Shestakov Yacht Sales Inc. имеет большое количество яхт в собственном списке продаж, а также тесно сотрудничает со всеми крупными яхтенными производителями по всему миру.

Для того чтобы купить яхту Kumatage — GRAND BANKS а также проконсультироваться по любому вопросу связанному с покупкой, продажей, чартером яхт позвоните по телефону **+7(918)465-66-44**.

ОГЛАВЛЕНИЕ

ОГЛАВЛЕНИЕ	2
ХАРАКТЕРИСТИКИ	5
Обзор	5
Основная информация	5
Размеры	5
Скорость, вместимость и масса	5
Размещение	6
Корпус и палуба	6
Информация о двигателе	6
ПОДРОБНОЕ ОПИСАНИЕ	7
OVERVIEW	7
SALON/LOWER HELM	7
GALLEY	8
MASTER STATEROOM	8
MASTER HEAD	8
FORWARD STATEROOM	9
FORWARD HEAD	9
DECK	9
FLYBRIDGE	10
MECHANICAL	10
ELECTRICAL	10
ITEMS OF INTEREST	11
EXCLUSIONS	11
Disclaimer	11
Исключения	11
Отказ от ответственности	11
ФОТОГРАФИИ	12
Salon	12

Galley	12
Master	12
Helm	12
Salon	12
Salon Aft	12
Salon Forward	13
Galley	13
Master Entryway	13
Master	13
Master Head	14
Master	14
Guest Stateroom	14
Guest Head	14
Companionway	15
Electrical Panel	15
Helm Overhead	15
Helm	15
Flybridge Layout	15
Flybridge Seating	15
Flybridge Settee	16
Aft Deck	16
Ground Tackle	16
Mast and Boom	16
Generator	16
Engine Room	16
Engine Room	17
КОНТАКТЫ	18
Контактная информация	18
Телефоны	18

Время работы	18
Адрес	18

ХАРАКТЕРИСТИКИ

Обзор

This Grand Banks 46 Classic, KUMATAGE is a vintage 1992 Classic with the optional layout forward and extra berth in the master stateroom. KUMATAGE features the typical Grand Banks rich teak interior and has hardwood parquet flooring throughout the interior. The salon is quite spacious and there are access doors to the walkaround decks both to port and starboard. The galley is down and features full refrigeration as well as a stove, microwave, and ample storage. The galley refrigeration systems, fly bridge Fridgibar, and entire air conditioning system were replaced in 2012. KUMATAGE is powered by twin CAT 3208TA's and features a Northern Lights generator. The fly bridge is unique in that it has a full framed structural top and 3 sided enclosure with U-zips. The mast is hinged for ease of lowering and the davit makes unloading a tender an easy job. KUMATAGE is aggressively priced in the market and being sold AS-IS with rights to inspect.

Основная информация

Тип судна: Траулер	Подкатегория: Aft Cabin
Модельный год: 1992	Год постройки: 1992
Страна: United States	Верх: Half Tower
Открытая палуба мостика: Да	

Размеры

Длина общая: 46' 0" (14.02m)	Длина по ватерлинии: 44' 9" (13.64m)
Ширина: 14' 9" (4.50m)	Макс. осадка: 4' 5" (1.35m)

Скорость, вместимость и масса

Крейс. скорость: 14 Kts. (16 MPH)	Макс. скорость: 18 Kts. (21 MPH)
Водоизмещение: 39000 Pounds	Чистый вес: 35 Pounds
Вместимость воды: 290 Gallons	Объем топливного бака: 600 Gallons

Размещение

Всего кают: 2

Всего коек: 3

Спальные места: 5

Всего ком. состава: 2

Корпус и палуба

Материал корпуса: Fiberglass

Материал палубы: Teak

Комплектация корпуса: Semi-Displacement

Цвет корпуса: White

Дизайнер корпуса: American Marine

Информация о двигателе

Двигатели: 2

Производитель: Caterpillar

Модель: 3208TA

Тип двигателя: Inboard

Тип топлива: Diesel

ПОДРОБНОЕ ОПИСАНИЕ

OVERVIEW

KUMATAGE is a vintage 1992 Classic with the optional layout forward and extra berth in the master stateroom. KUMATAGE features the typical Grand Banks rich teak interior and has hardwood parquet flooring throughout the interior. The salon is quite spacious and there are access doors to the walkaround deck both to port and starboard. The galley is down and features full refrigeration as well as a stove, microwave, and ample storage. The galley refrigeration systems, fly bridge Fridgibar, and entire air conditioning system were replaced in 2012. KUMATAGE is powered by twin CAT 3208TA's and features a Northern Lights generator. The fly bridge is unique in that it has a full framed structural top and 3 sided enclosure with U-zips. The mast is hinged for ease of lowering and the davit makes unloading a tender an easy job. KUMATAGE is aggressively priced in the market and being sold AS-IS with rights to inspect.

SALON/LOWER HELM

- Lower helm with Morse controls and ship's wheel
- Miscellaneous electronics including:
 - Furuno radar
 - Icom VHF radio
 - Autohelm ST7000 AP
 - Data Marine Dart
 - Tank Tender
 - Furuno DSPS30
 - Danforth Constellation compass
 - Chart storage
 - Boat leveler trim tabs
 - Engine gauge package
 - Flo-Scan fuel flow meters
 - Windlass control panel
 - Alarm panel
 - Windshield wipers
 - Salon table and chairs
 - (2) Bar stools
 - Wood blinds
 - Salon credenza
 - Interior phone system throughout the vessel
 - Sanyo flat panel TV
 - Reading lights
 - Faux fireplace

- Built in bookcases
- L-shape settee
- Air conditioning
- Parquet flooring

GALLEY

- Grunet standup double refrigerator
- Grunet in-counter freezer
- Dual basin stainless steel sink and faucet
- (3) Burner Princess electric stove
- Sharp Carousel convection/microwave oven
- Galley cabinets
- Dish and drawer storage
- Exhaust fan
- In-counter storage compartment
- Spice rack
- Lewmar hatch
- Air conditioning
- Parquet flooring

MASTER STATEROOM

The master stateroom has an inset queen berth to starboard with an oversized single berth to port. There is a dresser with drawers center lined aft.

- Hideaway aft cabin exit ladder to the stern
- Intercom phone
- 2 hanging lockers
- Carpeted steps to salon
- Fully length dressing mirror
- Teak shelving
- Windows with draperies
- Lighting
- Air conditioning
- Parquet flooring

MASTER HEAD

- Vacuflush head
- Mirrored vanity with single basin sink

- Storage
- Teak shelving
- Towel bar
- Separate shower stall with teak lattice flooring

FORWARD STATEROOM

- V-berth arrangement with drawer storage underneath
- (2) Windows with draperies
- Overhead teak storage box
- Full length stand-up mirror
- Lighting
- Hanging locker
- Walk-in closet
- Co2 monitor
- Forward bilge/storage access
- Lewmar hatch
- Air conditioning
- Parquet flooring

FORWARD HEAD

- Vanity with single bowl sink
- Mirrored wall
- Vacuflush toilet
- Teak blinds
- Cabinet storage
- Separate stand-up shower with teak lattice floor

DECK

- Teak toe rail
- Waste pump out fitting
- Full rail package
- Bow pulpit with double anchor set up
- Teak walk around decks
- Magma grill
- Extended teak swim platform
- Forward deck box
- Windlass
- Ships bell

- Dayton electric winch
- Mast
- (2) Rod holders
- Throw ring
- Bunny pad
- 11' Caribe Tender with 6HP Mercury 4Stroke

FLYBRIDGE

- Pipe framed ½ tower with Blue canvas cover
- (3) Sided enclosure with U-zips
- Aft settee with teak table
- L-shaped lounge
- Fore/aft riding seat with cushions
- Oversized Rigid Fridgid electric Fridgibar
- West Marine VHF radio
- Flo Scan fuel flow meters
- Engine mechanical gauges
- Teak fly bridge decking
- Morse throttles and shifters
- Danforth Constellation compass
- Nav lights
- Garmin GPS new 10/2014

MECHANICAL

- CAT 3280TA (375hp) diesel engines
- Bilge pumps
- Bilge blowers
- Bilge pumps
- Racor fuel filters
- Fresh water system
- Water heater

ELECTRICAL

- Northern Lights generator
- 50 amp ships service
- New 8D batteries 5/14
- Battery charger
- A/C and D/C distribution panel

- Battery selector switch

ITEMS OF INTEREST

- Rebuild Genset water pump 6/2014
- Forward head vacuum pump 8/2014
- (2) New VHF antennas 9/2014
- Engines serviced 9/2014
- (2) New 8D batteries 5/2014
- Last bottom paint job 5/2012
- New Air conditioning 4/2012
- New refrigeration 4/2012
- New water heater 4/2012

EXCLUSIONS

OWNERS PERSONAL ITEMS OR ANY OTHER ITEM AT TIME OF VIEWING NOT LISTED HEREIN.

Disclaimer

The Company offers the details of this vessel in good faith but cannot guarantee or warrant the accuracy of this information nor warrant the condition of the vessel. A buyer should instruct his agents, or his surveyors, to investigate such details as the buyer desires validated. This vessel is offered subject to prior sale, price change, or withdrawal without notice.

Исключения

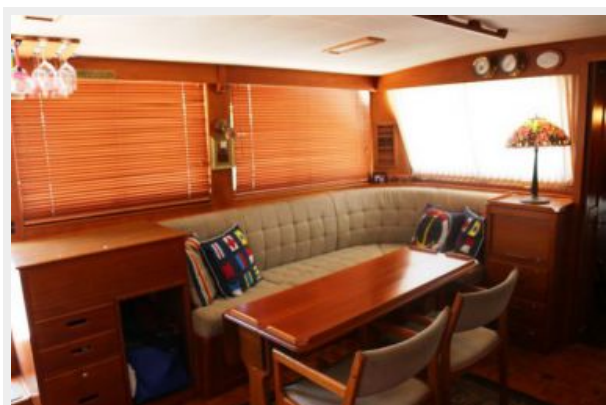
При продаже яхты исключаются личные вещи владельца.

Отказ от ответственности

Компания предоставляет описание судна или яхты добросовестно, но не может гарантировать точность этой информации, а также не ручается за техническое состояние. Покупатель должен проинструктировать своих агентов или оценщиков исследовать представленную информацию более подробно, по собственному желанию. Продажа судна или яхты, изменение цены или снятие с продажи будет происходить без предварительного уведомления.

ФОТОГРАФИИ

Salon



Galley



Master



Helm



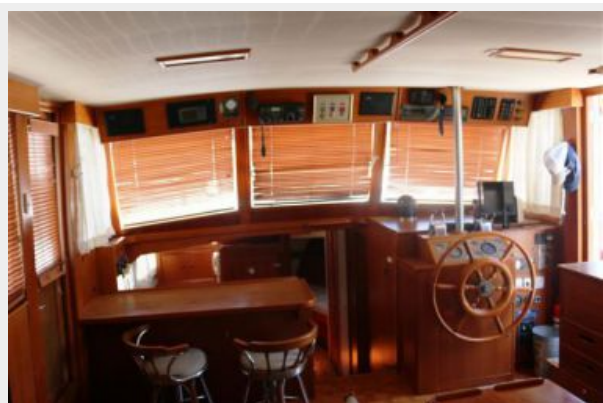
Salon



Salon Aft



Salon Forward



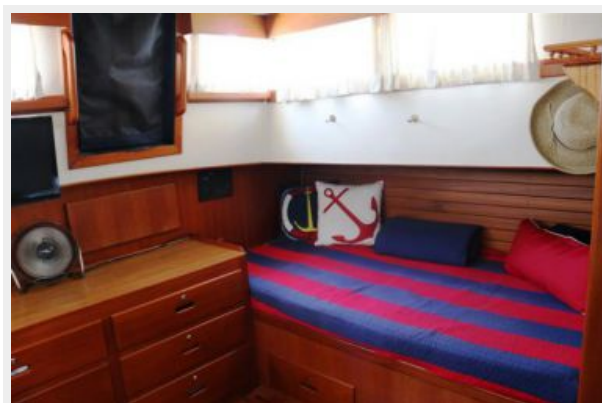
Galley



Master Entryway



Master



Master



Master Head



Guest Stateroom



Guest Head



Companionway



Electrical Panel



Helm Overhead



Helm



Flybridge Layout



Flybridge Seating



Flybridge Settee



Aft Deck



Ground Tackle



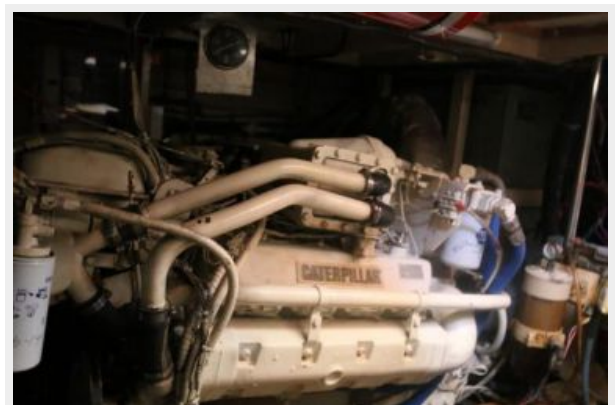
Mast and Boom



Generator



Engine Room



Engine Room



КОНТАКТЫ

Андрей Шестаков (Andrey Shestakov) – ведущий яхтенный брокер отдела продаж яхт и судов компании Shestakov Yacht Sales Inc. Официальный представитель Shestakov Yacht Sales Inc. для русскоговорящих клиентов в центральном офисе компании в Майами/Форт Лодердейл/Флорида/США.

Контактная информация

Email: andrey@shestakovyachtsales.com

Web: shestakovyachtsales.com

Телефоны

Краснодарский край: **+7(918)465-66-44**

США, Майами, Флорида: **+1(954)274-4435**

Время работы

Понедельник – Суббота: **9:00 - 21:00**
EDT

Воскресенье: **Закрыто**

Адрес



Harbour Towne Marina, 850 NE 3rd St,
STE 213, Dania, FL 33004