

ANNABELLE — FERRETTI



Builder: FERRETTI

Year Built: 2000

Model: Motor Yacht

Price: PRICE ON APPLICATION

Location: United States

LOA: 57' 0" (17.37m)

Beam: 16' 2" (4.93m)

Max Draft: 4' 0" (1.22m)

Our experienced yacht broker, Andrey Shestakov, will help you choose and buy a yacht that best suits your needs **Annabelle — FERRETTI** from our catalogue. Presently, at Shestakov Yacht Sales Inc., we have a wide variety of yachts available on our sale's list. We also work in close contact with all the big yacht manufacturers from all over the world.

If you would like to buy a yacht **Annabelle — FERRETTI** or would like help answering any questions concerning purchasing, selling or chartering a yacht, please call **+1(954)274-4435**

TABLE OF CONTENTS

TABLE OF CONTENTS	2
SPECIFICATIONS	3
Overview	3
Basic Information	3
Dimensions	3
Accommodations	3
Hull and Deck Information	3
Engine Information	4
DETAILED INFORMATION	5
Lower Helm Electronics	5
Flybridge Electronics	5
Bow	5
Recent Updates & Services	5
Exclusions	6
Disclaimer	6
PHOTOS	7
CONTACTS	20
Contact details	20
Telephones	20
Office hours	20
Address	20

SPECIFICATIONS

Overview

Annabelle is a Custom 57 'Motor Yacht. Stately Italian flybridge yacht defined elegance of European motor yachts of her era. Lavish all New Custom Teak and Leather interior salon, sunken galley with custom pantry, 3 elegant staterooms with custom teak floors in the guest states, adjoining head with custom teak and master head. Spacious bridge with upgrades of New Cocktail Table, upgraded Stereo and Garmin 2110 GPS Map, Fridge and Grill. Additional Features include extended swim platform, a set of spare props, bow thruster, new (Port Side) underwater exhaust system, . Large engine room (New Aluminum Standing Board), New Sound Shield-rare in a European Yacht.

Basic Information

Category: Motor Yacht

Model Year: 2000

Year Built: 2000

Country: United States

Dimensions

LOA: 57' 0" (17.37m)

Beam: 16' 2" (4.93m)

Max Draft: 4' 0" (1.22m)

MFG Length: 57' 0" (17.37m)

Accommodations

Total Cabins: 3

Total Heads: 3

Hull and Deck Information

Hull Material: Other

Engine Information

Engines: 2

Manufacturer: Caterpillar

Engine Type: Inboard

Fuel Type: Diesel

DETAILED INFORMATION

Lower Helm Electronics

- Garmin 4210
- Furuno radar
- Simrad autopilot
- Raytheon depth finder
- VHF Icon M127
- Spot light control 100
- Engine controls
- Bow thruster Vitus control

Flybridge Electronics

- Garmin 4210
- Raymarine depth finder
- VHF Standard
- Simrad autopilot
- Clarion stereo
- Engine control
- Track Vision
- New cooking plate
- new refrigerator
- New table
- New outside cushions 2014

Bow

- New stainless steel anchor
- Windlass and windlass control
- Custom bow cushions

Recent Updates & Services

- New batteries Jan 2015
- New battery charger 2015
- Bottom services March 2015
- Engine service March 2015
- Replaced hydraulic hoses in passarella 2014

- Rebuilt bow thruster engine 2014
- Rebuilt engine starter 2014
- 1000 hour service on engines 2014
- Rebuilt steering pump and steering ram 2014
- Installed new aluminum floors in the engine room 2014
- Installed new aft cockpit teak decks 2011
- New outside cushions 2014
- Installed wood floors throughout 2007
- Galley pantry refit 2008, including counter top, back splash, dual sinks, custom pantry, wine cooler, freezer, and new appliances 2010
- New counter tops in heads 2008
- Custom work and cushions in Salon 2014
- Upgraded TV in Salon 42' Sony New Stereo System
- Sherwood surround sound in Salon
- One set of spare props included

Exclusions

Owner's personal belongings.

Disclaimer

The Company offers the details of this vessel or yacht in good faith but cannot guarantee or warrant the accuracy of this information nor warrant the condition of the vessel. A buyer should instruct his representatives, agents, or his surveyors, to investigate such details as the buyer desires validated. This vessel or yacht is offered subject to prior sale, price change, or withdrawal without notice.

PHOTOS











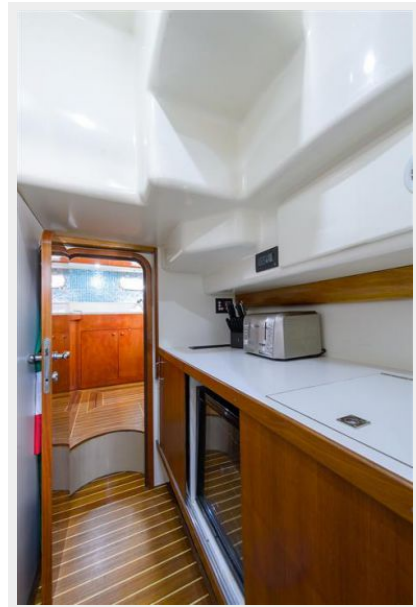
















CONTACTS

Andrey Shestakov, leading yacht broker of the sales department of Shestakov Yacht Sales Inc. Shestakov Yacht Sales Inc., the official representative of the Miami/Fort Lauderdale FL headquarters.

Contact details

Email: andrey@shestakovyachtsales.com

Web: shestakovyachtsales.com/en/

Telephones

USA: +1(954)274-4435

Office hours

Monday – Saturday: **9:00 - 21:00** EDT

Sunday: **closed**

Address



Harbour Towne Marina, 850 NE 3rd St,
STE 213, Dania, FL 33004