

CONTESSA — GRAND BANKS



Builder: GRAND BANKS

Year Built: 2000

Model: Cruiser

Price: PRICE ON APPLICATION

Location: United States

LOA: 49' 0" (14.94m)

Beam: 16' 0" (4.88m)

Max Draft: 4' 1" (1.24m)

Cruise Speed: 20 Kts. (23 MPH)

Max Speed: 25 Kts. (29 MPH)

Our experienced yacht broker, Andrey Shestakov, will help you choose and buy a yacht that best suits your needs **Contessa — GRAND BANKS** from our catalogue. Presently, at Shestakov Yacht Sales Inc., we have a wide variety of yachts available on our sale's list. We also work in close contact with all the big yacht manufacturers from all over the world.

If you would like to buy a yacht **Contessa — GRAND BANKS** or would like help answering any questions concerning purchasing, selling or chartering a yacht, please call **+1(954)274-4435**

TABLE OF CONTENTS

TABLE OF CONTENTS	2
SPECIFICATIONS	3
Overview	3
Basic Information	3
Dimensions	3
Speed, Capacities and Weight	4
Accommodations	4
Hull and Deck Information	4
Engine Information	4
DETAILED INFORMATION	5
Accommodations	5
Galley/Laundry	5
Electronics	5
Audio & Visual Equipment	6
Deck Equipment	7
Machinery	7
Safety Gear	7
Summary of Maintenance/Improvements	8
Exclusions	8
Disclaimer	8
PHOTOS	9
CONTACTS	16
Contact details	16
Telephones	16
Office hours	16
Address	16

SPECIFICATIONS

Overview

Hundreds of thousands of dollars have been invested in "Contessa" to bring her into flawless condition!

- ***Engines completely overhauled Nov. 2014***
- ***\$45,000 in electronics including Ghost alarm system***
- ***New flag blue painted hull***
- ***New canvas throughout***
- ***Sea RO 1200 GPD Water maker***
- ***Delta T System***
- ***Trace Inverter***
- ***New Props and shafts***
- ***Custom Teak appointments***

Contessa is owned by an highly experienced yachtsman with 40 years of ocean cruising, nothing has been spared or overlooked. This is without a doubt the nicest, most babied 49 Grand Banks East Bay on the market. She must be seen to be appreciated. Please research the market and compare the improvements and options to the other East Bay's available for sale. Contessa hands down has more options and extras than any other 49' East Bay for sale anywhere! **FULL DETAILED INVOICES AVAILABLE FOR VIEWING for Serious inquiries only!** New to market...

Basic Information

Category: Cruiser

Sub Category: Express

Model Year: 2001

Year Built: 2000

Country: United States

Dimensions

LOA: 49' 0" (14.94m)

Beam: 16' 0" (4.88m)

Max Draft: 4' 1" (1.24m)

Speed, Capacities and Weight

Cruise Speed: 20 Kts. (23 MPH)

Max Speed: 25 Kts. (29 MPH)

Displacement: 49500 Pounds

Water Capacity: 176 Gallons

Fuel Capacity: 745 Gallons

Accommodations

Total Cabins: 2

Total Heads: 2

Hull and Deck Information

Hull Material: Fiberglass

Engine Information

Engines: 2

Manufacturer: Caterpillar

Model: 3196

Engine Type: Inboard

Fuel Type: Diesel

DETAILED INFORMATION

Accommodations

Gorgeous two stateroom/2 head teak interior. Soles and trim are teak as well. The master is forward and has a brand new Zeno mattress on the centerline queen. The guest cabin is to port and has 2 single berths with brand new Zeno mattresses as well. Finishing touches with IK Design furniture including a large 55/30 teak folding table, DD Bramley armchairs, and Silver King.

"Contessa" is a 2001 model East Bay. Hull construction was started in 2000 and her HIN is a 2001.

Galley/Laundry

- 3 burner Princess electric glass top stove
- Sharp Carousel microwave
- (2) Sub-Zero cabinet refrigerators
- Custom freezer chest with icemaker
- Raritan hot water heater
- Corian countertops
- Bosch clothes washer
- Bosch clothes dryer

Electronics

The following electronics were installed in May 2012 at a cost of approx. \$45,000:

- (2) Garmin 7212 12" multi function displays with NMEA 2K GPS sensor
- Garmin GMR 604 XHD 6 kw, 4' open array digital radar antenna sensor
- Garmin GSD 24 sounder
- Airmar B260 50/200 KHz 1 kw bronze HP thru hull for deep water
- Airmar DT800 bronze housing 235Khz NMEA 2K smart transducer
- (2) Garmin GMI 10 data display
- Garmin GXM 51 SAT XM weather w/ audio option
- Garmin AIS 600 TX/RX system
- Garmin GWS wind sensor w/ air temp, barometric pressure
- Maretron solid state gyro compass
- (2) ICOM M504 BLK 25w DSC VHF w/ 25w hailer/fog
- 1 KVH M5 w/ control panel
- Spaun SMS 5602NF 5x6 Sat multiswitch
- Wilson cell/PCS signal repeater system w/ auto gain control

- Wave WiFi Rogue amplifier 800 mw up to 7 mi
- (2) Extron SW 4AV RCA switcher w/ contact closure
- (4) Seco 1x2 BNC composite video splitter
- (2) Cusom Wards 3 switch panels
- (2) EVR EZ730W outdoor day/night IR LED high res bullet camera
- Digital watchdog 3.5mm 540TVL compact micro dome camera
- Digital 883-CW 4' 9dB cell antenna
- Digital 814-WLW 4' 2.4 Ghz WiFi antenna
- (2) Digital 829-VW 8' 6dB VHF antenna
- (2) SHK 101 SS ratchet antenna mount
- D Lilly 107L SS deck mount
- (2) Perko LG SS wire gland
- (2) Fusion MSAV700 AM/FM CD/DVD w/ IP control & multi zone
- (2) Fusion MS-WR600C full function waterproof wired remotes
- Apple Air Port express
- Pr. JL TR525-CXI 5.25" mobile coaxial speakers
- (2) Pr. JL Audio M770 CCS-CG-WH 7.7" premium marine speakers
- (2) XantechDK95 IR repeater kit
- (2) Samsung UN-32D4003 32" LED TV 720P
- Samsung UN-22D5003 22" LED TV 720P
- Peerless flat VESA TV mount
- (3) Direct TV HR 24 SAT receivers
- (2) PCBKDC PAV balun kit
- (2) PCBKDCVAV balun kit
- (4) PCBKDSTA balun kit
- Tripplett 10A 110VAC/12VDC power supply
- (2) Anthony Gallo Nucleus Micro (Blk) satellite speaker
- (2) Omni Mount 10.0 speaker brackets (Blk)
- NMEA 2000 backbone assembly kit
- Blue Sea 5200 6g ATC fuse block
- (2) Blue Sea GND buss bars
- (3) APC 6g 110 VAC surge strips
- (2) Lumitec exterior LED spot (Wht)
- State-of-the-Art Ghost Alarm system - \$4,000

Audio & Visual Ekiupment

- Sharp TV w/ Sony DVD in Salon
- Sharp TV in Forward Stateroom
- KVH SAT TV
- Sony AM/FM CD/DVD
- XM Satellite
- Direct TV

Deck Equipment

- Stainless steel bow pulpit
- Fiberglass swim platform - new Custom Beachcomber 13'6"x36" - 5/2012
- New canvas bimini top for cockpit shade, backdrop, enclosure, cushions (9/2012)
- Transom gate
- Hard top with radar arch
- Maxwell anchor windlass with remote
- Light mast
- Shower on deck
- Stidd helm seat
- Exalto windshield wiper
- Windows tinted with ULV 50 to all windows in sides and back of pilothouse (5/2012)
- Front windshields - applied V-Cool (5/2012)

Machinery

- **Nov. 2014 - Complete overhaul of both engines at 2,000 hours by Marine Power Services in Ft. Lauderdale**
- Fresh water cooling system
- Twin Racor filters on engines
- Jabsco VR050 Diesel refueling pump
- Hydraulic steering
- **Twin Nibral 29x34.088 props - reconditioned 5/2012**
- **New shafts (6/2014)**
- Wesmar Bowthruster
- Twin Disc MGX 5114A transmissions
- Northern Lights Generator 12kw
- Trace Engineering Model SW2512 inverter
- (2) Marinco 50 amp cables
- Glendinning cablemaster
- Tankwatch level monitor system
- Engine room Jabsco ventilation system
- Bennett trim tabs
- Analytic Converter
- Marine Air A/C reverse cycle
- Sea-R.O. watermaker, 1200 gpd
- Raritan heads
- Raritan galley flow system

Safety Gear

- (3) hand-held fire extinguishers
- Sea-fire fire suppression system monitor and engine shutdown controls
- Bilge pumps
- Bilge alarms
- ACR RCL-100 searchlights
- Avon 6 Man liferaft - inspected, tested and repacked 5/2012

Summary of Maintenance/Improvements

This meticulous Owner has detailed invoices amounting to several hundred thousand dollars for work performed on Contessa. Below are key improvements that were completed on the vessel from 2012 to present:

- Complete overhaul of electronics by Nautec (5/2012 \$45,000) - see electronics section for complete list
- Delta T systems ((5/2012)
- Custom Zeno mattresses in both cabins (5/2012)
- V-Kool on windows (8/2012)
- Interior finishing/windows (7/2012)
- New canvas bimini top for cockpit shade, backdrop, enclosure, cushions (9/2012)
- Reconditioned/balanced props (6/2014)
- New shafts (6/2014)
- Teak work throughout - \$8,600 - new dash, drop-down TV box, steps for aft deck, entry door, plus mica work

Exclusions

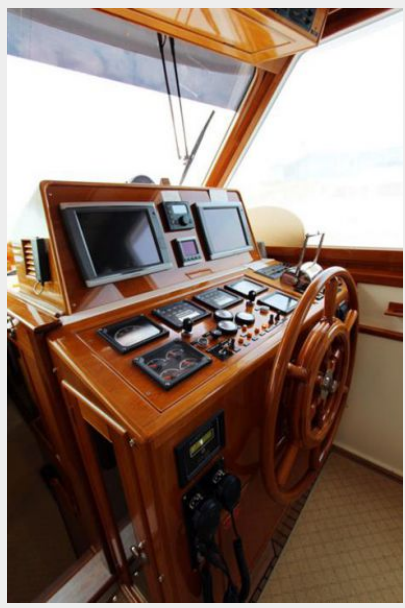
Owner's personal belongings.

Disclaimer

The Company offers the details of this vessel or yacht in good faith but cannot guarantee or warrant the accuracy of this information nor warrant the condition of the vessel. A buyer should instruct his representatives, agents, or his surveyors, to investigate such details as the buyer desires validated. This vessel or yacht is offered subject to prior sale, price change, or withdrawal without notice.

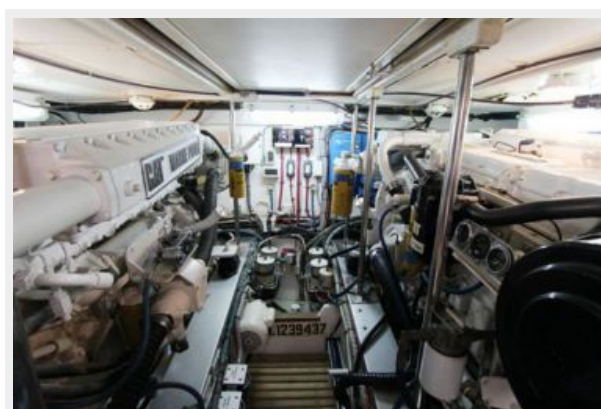
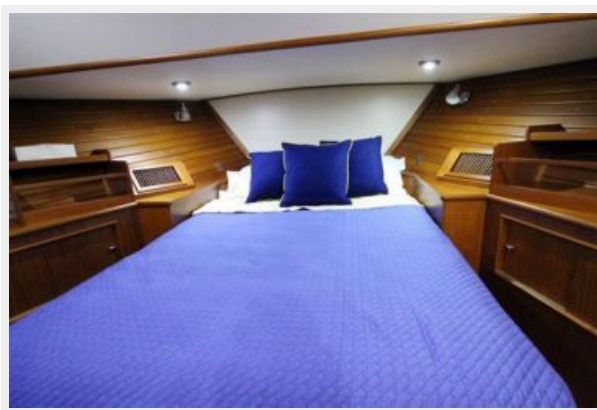
PHOTOS















CONTACTS

Andrey Shestakov, leading yacht broker of the sales department of Shestakov Yacht Sales Inc. Shestakov Yacht Sales Inc., the official representative of the Miami/Fort Lauderdale FL headquarters.

Contact details

Email:
andrey@shestakovyachtsales.com

Web: shestakovyachtsales.com/en/

Telephones

USA: **+1(954)274-4435**

Office hours

Monday – Saturday: **9:00 - 21:00 EDT**

Sunday: **closed**

Address



Harbour Towne Marina, 850 NE 3rd St,
STE 213, Dania, FL 33004