

GREAT ESCAPE — VIKING



Builder: VIKING

Year Built: 2008

Model: Sport Fisherman

Price: PRICE ON APPLICATION

Location: United States

LOA: 54' 0" (16.46m)

Beam: 17' 9" (5.41m)

Max Draft: 5' 2" (1.57m)

Cruise Speed: 33 Kts. (38 MPH)

Max Speed: 38 Kts. (44 MPH)

Our experienced yacht broker, Andrey Shestakov, will help you choose and buy a yacht that best suits your needs **GREAT ESCAPE — VIKING** from our catalogue. Presently, at Shestakov Yacht Sales Inc., we have a wide variety of yachts available on our sale's list. We also work in close contact with all the big yacht manufacturers from all over the world.

If you would like to buy a yacht **GREAT ESCAPE — VIKING** or would like help answering any questions concerning purchasing, selling or chartering a yacht, please call **+1(954)274-4435**

TABLE OF CONTENTS

TABLE OF CONTENTS	2
SPECIFICATIONS	6
Overview	6
Basic Information	6
Dimensions	6
Speed, Capacities and Weight	6
Accommodations	7
Hull and Deck Information	7
Engine Information	7
DETAILED INFORMATION	8
Accommodations	8
Master Stateroom, Amidship Port	8
Guest Stateroom, Forward	8
Guest Stateroom, Amidship Starboard	9
Salon	9
Master Head	10
Guest Head, Amidship Starboard	10
Galley / Laundry, Main Deck, Port	10
Helm / Electronics and Navigation	11
Deck	11
Engine and Mechanical Equipment	12
Electrical System / Equipment	12
Cockpit / Fishing Equipment	13
Additional Features / Equipment	13
Exclusions	13
Salesman's Comments	14
Exclusions	14
Disclaimer	14

PHOTOS	15
Profile 2	15
Profile 3	15
Profile 4	15
Profile 5	15
Master Stateroom 1 - Queen Berth w/ Quilted Bedspread & Pillow Shams	15
Bow Profile	15
Master Stateroom 2 - Hanging Locker	16
Master Stateroom 3 - TV	16
Guest Stateroom, Forward 1	16
Guest Stateroom, Forward 2 - TV	16
Guest Stateroom, Amidship Starboard 1	16
Guest Stateroom, Amidship Starboard 2	16
Salon 1	17
Salon 2	17
Salon 3	17
Salon 4 - Dinette	17
Salon 5	17
Salon 6 - TV Over Dinette	17
Master Head 1 - Vanity	18
Salon 7 - Entertainment System	18
Master Head 2	18
Master Head 3 - Shower	18
Guest Head 1	19
Guest Head 2 - Shower	19
Galley 1	19
Galley 2	19
Galley 4 - Under Counter Refrigerators & Freezers	20
Galley 3	20

Laundry - Clothes Washer & Clothes Dryer	20
Galley 5 - Flooring	20
Helm / Electronics & Navigation 1	21
Helm / Electronics & Navigation 2	21
Helm / Electronics & Navigation 3	21
Helm / Electronics & Navigation 4	21
Helm / Electronics & Navigation 5	21
Deck 1 - Bow	21
Deck 2	22
Deck 3	22
Deck 4 - Helm Deck	22
Deck 5 - Seating	22
Engine & Mechanical Equipment 1 - Engine Room Access	22
Engine & Mechanical Equipment 2 - Engine Room	22
Engine & Mechanical Equipment 3	23
Engine & Mechanical Equipment 4	23
Engine & Mechanical Equipment 5	23
Engine & Mechanical Equipment 6	23
Engine & Mechanical Equipment 7 - Cruisair	23
Engine & Mechanical Equipment 8	23
Electrical System / Equipment 1	24
Engine & Mechanical Equipment 9 - Engine Hours	24
Electrical System / Equipment 2	24
Cockpit / Fishing Equipment 1	24
Cockpit Refrigerated Drink Box	24
Cockpit Freezer	24
Cockpit / Fishing Equipment 4	25
Cockpit / Fishing Equipment 5	25
Additional Features / Equipment - Spare Props	25

Profile 7	25
Profile 8	25
CONTACTS	26
Contact details	26
Telephones	26
Office hours	26
Address	26

SPECIFICATIONS

Overview

This 54' Viking Convertible has a lot to admire with its powerful styling, state-of-the-art Hull construction, large Cockpit with Mezzanine seating and Three Stateroom / Two Head layout. The high gloss teak interior and upgraded Premier decor complete this beautifully outfitted sport fishing yacht. The "Great Escape" features a set of low hour MAN 1550 horsepower diesel engines that easily cruise at a comfortable 33 knots. She has a full electronics package including both SAT television and communication. The bow thruster and electronic single lever Helm controls make handling this boat a breeze. A change in the owner's plans have made this very well kept Viking available. Don't miss this opportunity to be her next proud owner!

Basic Information

Category: Sport Fisherman

Sub Category: Convertible

Model Year: 2008

Year Built: 2008

Country: United States

Vessel Top: Hardtop

Cockpit: Yes

Dimensions

LOA: 54' 0" (16.46m)

Beam: 17' 9" (5.41m)

Max Draft: 5' 2" (1.57m)

Speed, Capacities and Weight

Cruise Speed: 33 Kts. (38 MPH)

Max Speed: 38 Kts. (44 MPH)

Displacement: 77900 Pounds

Water Capacity: 225 Gallons

Fuel Capacity: 1745 Gallons

Accommodations

Total Cabins: 3

Total Berths: 6

Sleeps: 6

Total Heads: 2

Hull and Deck Information

Hull Material: Fiberglass

Deck Material: Fiberglass

Hull Configuration: Semi Vee

Hull Color: White

Hull Finish: Fiberglass

Engine Information

Engines: 2

Manufacturer: MAN

Model: V-12 1550 CRM

Engine Type: Inboard

Fuel Type: Diesel

DETAILED INFORMATION

Accommodations

Sleeps six owners and guests in three Staterooms for a total of six berths. One Master Head with shower, one Guest Head with shower. This interior layout has three spacious Staterooms and two full Heads and features a queen-size berth forward. The Laundry Center is located in the starboard Guest Head. The Main Deck area holds the L-shaped sofa, comfortable dinette and large Galley. There are two bar stools at the granite-topped Galley counter.

Master Stateroom, Amidship Port

- Head
- Shower
- Dresser
- Credenza
- Carpeting
- Night stands
- Queen berth
- 20" Sharp TV
- Hanging locker
- Custom wallpaper
- Under bed drawer
- Under bed storage
- Separate reading lights
- Stereo system speakers
- Hard-wired end table lamps
- Upgraded innerspring mattress
- Hi-gloss teak cabinets & closet
- Lift-top bed opens to storage area
- Quilted bed spread & pillow shams
- Air conditioning / heater with controls
- Upholstered head board w/ mirror behind

Guest Stateroom, Forward

- Cabinets
- Carpeting
- Queen berth
- 15" Sharp TV
- Hanging locker

- Custom wallpaper
- Under bed drawer
- Under bed storage
- Separate reading lights
- Stereo system speakers
- Mirrored forward bulkhead
- Lift-top bed opens to storage area
- Quilted bed spread & pillow shams
- Air conditioning / heater with controls
- Deck hatch w/ screen & privacy blind
- Teak Hi-gloss storage cabinets & hanging locker

Guest Stateroom, Amidship Starboard

- Carpeting
- 15" Sharp TV
- Hanging locker
- Custom wallpaper
- Under bed drawer
- Under bed storage
- Hi-gloss teak cabinets
- Stereo system speakers
- Cross-over upper & lower berths
- Air conditioning / heater with controls

Salon

- Carpeting
- Teak valances
- Telephone jack
- 46" Samsung TV
- Canvas rug runner
- Teak Hi - Lo table
- Cable TV hookups
- Icom Command Mic
- Electric door opener
- Dinette w/ teak table
- Premier Edition decor
- Pioneer HD DVD player
- Amtico flooring at entrance
- Dimmers on overhead lights
- Bose Home Theater System

- Hi-gloss teak walls & cabinets
- Hunter Douglas silhouette blinds
- Fixed, tinted, frameless windows
- Air conditioning / heater with controls
- Electric breaker panel in "up" location
- L-shaped ultra-leather sofa w/ storage
- Bose stereo system with CD / DVD player

Master Head

- A/C vent
- Wallpaper
- Exhaust fan
- Amtico flooring
- Hi-gloss teak cabinet
- Mirrored medicine cabinet
- Custom granite vanity top w/ sink
- Shower w/ single piece shower door
- Deck hatch w/ screen & privacy blind
- Mirrored wall around medicine cabinet
- Overboard, recirculating, holding tank, electric head

Guest Head, Amidship Starboard

- Exhaust fan
- Amtico flooring
- Custom wallpaper
- Hi-gloss teak cabinet
- Granite vanity top w/ sink
- Medicine cabinet w/ mirrored doors
- Shower w/ single piece shower door
- Deck hatch w/ screen & privacy blind
- Mirrored wall around medicine cabinet
- Overboard, recirculating, holding tank, electric head

Galley / Laundry, Main Deck, Port

- Water heater
- Garbage disposal
- Hi-gloss teak cabinets
- Central vacuum system

- Amtico Rosewood flooring
- Microwave oven / Convection oven
- Pressure, dockside fresh water system
- Granite countertops w/ stainless steel sink
- Kenyon surface-mounted four burner, electric stove
- Whirlpool front-loading clothes washer & clothes dryer
- Sub-Zero under counter drawer-style refrigerator & freezer

Helm / Electronics and Navigation

- FLIR
- Compass
- Simrad AP28 auto pilot
- ACR RL-100 Spot light
- (2) Furuno GPS receivers
- (2) Icom 604 VHF radios
- Flush-mounted transducers
- 72mile Furuno 12kW radar
- SAT COM KVH Trac phone
- Cameras in Cockpit & Engine Room
- Furuno 2kW Dual frequency sounder
- (3) Furuno NAV NET black box monitors
- Furuno RD-30 depth, sea temp & knot meter
- KVH Trac Vision TV w/ connection to all (4) TV's
- Clarion stereo system with AM / FM radio, CD player, SAT stereo

Deck

- Anchor
- Bow rail
- Cockpit cover
- Spreader lights
- Navigation lights
- In-direct Cockpit lights
- Walk-thru transom door
- (2) Murray Products teak Helm seats
- Lewmar C4 Capstan electric windlass
- Stainless steel bow cap for anchor line
- Coast Guard approved safety package
- Removable Flybridge jump seat backrest
- Bow anchor locker w/ fresh water wash down
- Fresh water, salt water, pressure Deck wash down system

- 3-sided Costa Clear Bridge enclosure w/ zippered vents forward
- Viking hardtop w/ drop down box for MAN displays & Furuno RD-30

Engine and Mechanical Equipment

- Trim tabs
- Fire alarm
- Bilge blower
- Racor fuel filters
- ZF Transmission
- Oil pressure alarm
- Fire control system
- Engine block heaters
- Electric trolling valves
- Bridge engine controls
- Back-up engine controls
- Engine fuel shut-off valve
- Electric fuel prime pumps
- Back-up AC water pump
- Engine temperature alarm
- Dual power steering pumps
- Electric single lever controls
- Thermal, acoustical insulation
- Moritz System monitor system
- Automatic, manual bilge pumps
- (2) Y-valve emergency bilge pumps
- Cruisair reverse cycle air conditioner
- Delta T Engine Room air box system
- Power Assist hydraulic, wheel steering
- Halon, automatic, manual fire extinguisher
- Remote engine start / stops in Engine Room
- Oil exchange system connection in Cockpit box
- Twin 1550 hp. Diesel I/B 2008 MAN V-12 1550 CRM's w/ 790 hrs.

Electrical System / Equipment

- Dockside cables
- Battery parallel switch
- (2) 24volt Battery banks
- 12v, 24v DC electrical system
- (2) Automatic battery chargers
- 110v, 220v AC electrical system

- Onan 21.5kW generator w/ 750 hrs.
- Glendinning cable master 50 amp / 220 volt dockside cable

Cockpit / Fishing Equipment

- Bait freezer
- Tackle storage
- Rupp outriggers
- (6) Rod holders
- Insulated bait box
- Rupp center rigger
- Eskimo ice machine
- Bait tray and drawer
- In-Deck live bait well
- (4) Cockpit wing rod holders
- In-Deck ice maker discharge box
- Large macerated in-Deck fish box
- 6-rod Rocket launcher (aft Bridge rail)
- Release Marine teak fighting chair w/ 4-rod rocket launcher
- Prepped and pre-wired for electric teaser reels in hard top box

Additional Features / Equipment

- Bow thruster
- Prop pockets
- Under water lights
- Cockpit Mezzanine
- Transom swim steps
- Fiberglass side thru Hulls
- Additional fuel (3 tanks total)
- Spare props w/ storage boxes
- Refrigerated Cockpit drink box
- Fresh water wash down on Bridge
- Refrigerated drink box on Flybridge
- 4-sided Canvas winter Bridge enclosure
- Teak strips in Companionway wall panels
- Release teak Helm pod for single lever controls
- Under-mounted house side hand rails that wraps around front of Bridge overhang

Exclusions

Owner's personal gear and items.

Salesman's Comments

This 54' Viking Convertible has a lot to admire with its powerful styling, state-of-the-art Hull construction, large Cockpit with Mezzanine seating and Three Stateroom / Two Head layout. The high gloss teak interior and upgraded Premier decor complete this beautifully outfitted sport fishing yacht. The "Great Escape" features a set of low hour MAN 1550 horsepower diesel engines that easily cruise at a comfortable 33 knots. She has a full electronics package including both SAT television and communication. The bow thruster and electronic single lever Helm controls make handling this boat a breeze. A change in the owner's plans have made this very well kept Viking available. Don't miss this opportunity to be her next proud owner!

Exclusions

Owner's personal belongings.

Disclaimer

The Company offers the details of this vessel or yacht in good faith but cannot guarantee or warrant the accuracy of this information nor warrant the condition of the vessel. A buyer should instruct his representatives, agents, or his surveyors, to investigate such details as the buyer desires validated. This vessel or yacht is offered subject to prior sale, price change, or withdrawal without notice.

PHOTOS

Profile 2



Profile 3



Profile 4



Profile 5



Bow Profile



**Master Stateroom 1 - Queen Berth w/ Quilted
Bedsread & Pillow Shams**



Master Stateroom 2 - Hanging Locker



Master Stateroom 3 - TV



Guest Stateroom, Forward 1



Guest Stateroom, Forward 2 - TV



Guest Stateroom, Amidship Starboard 1



Guest Stateroom, Amidship Starboard 2



Salon 1



Salon 2



Salon 3



Salon 4 - Dinette



Salon 5



Salon 6 - TV Over Dinette



Salon 7 - Entertainment System



Master Head 1 - Vanity



Master Head 2



Master Head 3 - Shower



Guest Head 1



Guest Head 2 - Shower



Galley 1



Galley 2



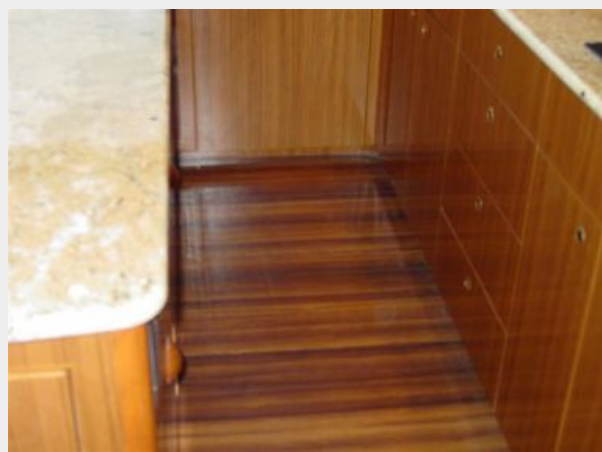
Galley 3



Galley 4 - Under Counter Refrigerators & Freezers



Galley 5 - Flooring



Laundry - Clothes Washer & Clothes Dryer



Helm / Electronics & Navigation 1



Helm / Electronics & Navigation 2



Helm / Electronics & Navigation 3



Helm / Electronics & Navigation 4



Helm / Electronics & Navigation 5



Deck 1 - Bow



Deck 2



Deck 3



Deck 4 - Helm Deck



Deck 5 - Seating



Engine & Mechanical Equipment 1 - Engine Room Access



Engine & Mechanical Equipment 2 - Engine Room



Engine & Mechanical Equipment 3



Engine & Mechanical Equipment 4



Engine & Mechanical Equipment 5



Engine & Mechanical Equipment 6



Engine & Mechanical Equipment 7 - Cruisair



Engine & Mechanical Equipment 8



Engine & Mechanical Equipment 9 - Engine Hours



Electrical System / Equipment 1



Electrical System / Equipment 2



Cockpit / Fishing Equipment 1



Cockpit Refrigerated Drink Box



Cockpit Freezer



Cockpit / Fishing Equipment 4



Cockpit / Fishing Equipment 5



Additional Features / Equipment - Spare Props



Profile 7



Profile 8



CONTACTS

Andrey Shestakov, leading yacht broker of the sales department of Shestakov Yacht Sales Inc. Shestakov Yacht Sales Inc., the official representative of the Miami/Fort Lauderdale FL headquarters.

Contact details

Email: andrey@shestakovyachtsales.com

Web: shestakovyachtsales.com/en/

Telephones

USA: +1(954)274-4435

Office hours

Monday – Saturday: **9:00 - 21:00** EDT

Sunday: **closed**

Address



Harbour Towne Marina, 850 NE 3rd St,
STE 213, Dania, FL 33004