

GREAT ESCAPE — VIKING



Судостроитель: [VIKING](#)

Год постройки: 2008

Модель: Катер для спортивной рыбалки

Цена: **ЦЕНА ЯХТЫ ПО ЗАПРОСУ**

Местонахождение: United States

Длина общая: 54' 0" (16.46m)

Ширина: 17' 9" (5.41m)

Макс. осадка: 5' 2" (1.57m)

Крейс. скорость: 33 Kts. (38 MPH)

Макс. скорость: 38 Kts. (44 MPH)

Купить **GREAT ESCAPE — VIKING** а также выбрать подходящую вам яхту из нашего каталога яхт вам поможет опытный яхтенный брокер Андрей Шестаков. На сегодняшний день компания **Shestakov Yacht Sales Inc.** имеет большое количество яхт в собственном списке продаж, а также тесно сотрудничает со всеми крупными яхтенными производителями по всему миру.

Для того чтобы купить яхту **GREAT ESCAPE — VIKING** а также проконсультироваться по любому вопросу связанному с покупкой, продажей, чартером яхт позвоните по телефону **+7(918)465-66-44**.

ОГЛАВЛЕНИЕ

ОГЛАВЛЕНИЕ	2
ХАРАКТЕРИСТИКИ	6
Обзор	6
Основная информация	6
Размеры	6
Скорость, вместимость и масса	6
Размещение	7
Корпус и палуба	7
Информация о двигателе	7
ПОДРОБНОЕ ОПИСАНИЕ	8
Accommodations	8
Master Stateroom, Amidship Port	8
Guest Stateroom, Forward	8
Guest Stateroom, Amidship Starboard	9
Salon	9
Master Head	10
Guest Head, Amidship Starboard	10
Galley / Laundry, Main Deck, Port	10
Helm / Electronics and Navigation	11
Deck	11
Engine and Mechanical Equipment	12
Electrical System / Equipment	12
Cockpit / Fishing Equipment	13
Additional Features / Equipment	13
Exclusions	13
Salesman's Comments	14
Исключения	14
Отказ от ответственности	14

ФОТОГРАФИИ	15
Profile 2	15
Profile 3	15
Profile 4	15
Profile 5	15
Master Stateroom 1 - Queen Berth w/ Quilted Bedspread & Pillow Shams	15
Bow Profile	15
Master Stateroom 2 - Hanging Locker	16
Master Stateroom 3 - TV	16
Guest Stateroom, Forward 1	16
Guest Stateroom, Forward 2 - TV	16
Guest Stateroom, Amidship Starboard 1	16
Guest Stateroom, Amidship Starboard 2	16
Salon 1	17
Salon 2	17
Salon 3	17
Salon 4 - Dinette	17
Salon 5	17
Salon 6 - TV Over Dinette	17
Master Head 1 - Vanity	18
Salon 7 - Entertainment System	18
Master Head 2	18
Master Head 3 - Shower	18
Guest Head 1	19
Guest Head 2 - Shower	19
Galley 1	19
Galley 2	19
Galley 4 - Under Counter Refrigerators & Freezers	20
Galley 3	20

Laundry - Clothes Washer & Clothes Dryer	20
Galley 5 - Flooring	20
Helm / Electronics & Navigation 1	21
Helm / Electronics & Navigation 2	21
Helm / Electronics & Navigation 3	21
Helm / Electronics & Navigation 4	21
Helm / Electronics & Navigation 5	21
Deck 1 - Bow	21
Deck 2	22
Deck 3	22
Deck 4 - Helm Deck	22
Deck 5 - Seating	22
Engine & Mechanical Equipment 1 - Engine Room Access	22
Engine & Mechanical Equipment 2 - Engine Room	22
Engine & Mechanical Equipment 3	23
Engine & Mechanical Equipment 4	23
Engine & Mechanical Equipment 5	23
Engine & Mechanical Equipment 6	23
Engine & Mechanical Equipment 7 - Cruisair	23
Engine & Mechanical Equipment 8	23
Electrical System / Equipment 1	24
Engine & Mechanical Equipment 9 - Engine Hours	24
Electrical System / Equipment 2	24
Cockpit / Fishing Equipment 1	24
Cockpit Refrigerated Drink Box	24
Cockpit Freezer	24
Cockpit / Fishing Equipment 4	25
Cockpit / Fishing Equipment 5	25
Additional Features / Equipment - Spare Props	25

Profile 7	25
Profile 8	25
КОНТАКТЫ	26
Контактная информация	26
Телефоны	26
Время работы	26
Адрес	26

ХАРАКТЕРИСТИКИ

Обзор

This 54' Viking Convertible has a lot to admire with its powerful styling, state-of-the-art Hull construction, large Cockpit with Mezzanine seating and Three Stateroom / Two Head layout. The high gloss teak interior and upgraded Premier decor complete this beautifully outfitted sport fishing yacht. The "Great Escape" features a set of low hour MAN 1550 horsepower diesel engines that easily cruise at a comfortable 33 knots. She has a full electronics package including both SAT television and communication. The bow thruster and electronic single lever Helm controls make handling this boat a breeze. A change in the owner's plans have made this very well kept Viking available. Don't miss this opportunity to be her next proud owner!

Основная информация

Тип судна: Катер для спортивной рыбалки

Подкатегория: Convertible

Модельный год: 2008

Год постройки: 2008

Страна: United States

Верх: Hardtop

Кубрик: Да

Размеры

Длина общая: 54' 0" (16.46m)

Ширина: 17' 9" (5.41m)

Макс. осадка: 5' 2" (1.57m)

Скорость, вместимость и масса

Крейс. скорость: 33 Kts. (38 MPH)

Макс. скорость: 38 Kts. (44 MPH)

Водоизмещение: 77900 Pounds

Вместимость воды: 225 Gallons

Объем топливного бака: 1745 Gallons

Размещение

Всего кают: 3

Всего коек: 6

Спальные места: 6

Всего ком. состава: 2

Корпус и палуба

Материал корпуса: Fiberglass

Материал палубы: Fiberglass

Комплектация корпуса: Semi Vee

Цвет корпуса: White

Отделка корпуса: Fiberglass

Информация о двигателе

Двигатели: 2

Производитель: MAN

Модель: V-12 1550 CRM

Тип двигателя: Inboard

Тип топлива: Diesel

ПОДРОБНОЕ ОПИСАНИЕ

Accommodations

Sleeps six owners and guests in three Staterooms for a total of six berths. One Master Head with shower, one Guest Head with shower. This interior layout has three spacious Staterooms and two full Heads and features a queen-size berth forward. The Laundry Center is located in the starboard Guest Head. The Main Deck area holds the L-shaped sofa, comfortable dinette and large Galley. There are two bar stools at the granite-topped Galley counter.

Master Stateroom, Amidship Port

- Head
- Shower
- Dresser
- Credenza
- Carpeting
- Night stands
- Queen berth
- 20" Sharp TV
- Hanging locker
- Custom wallpaper
- Under bed drawer
- Under bed storage
- Separate reading lights
- Stereo system speakers
- Hard-wired end table lamps
- Upgraded innerspring mattress
- Hi-gloss teak cabinets & closet
- Lift-top bed opens to storage area
- Quilted bed spread & pillow shams
- Air conditioning / heater with controls
- Upholstered head board w/ mirror behind

Guest Stateroom, Forward

- Cabinets
- Carpeting
- Queen berth
- 15" Sharp TV
- Hanging locker

- Custom wallpaper
- Under bed drawer
- Under bed storage
- Separate reading lights
- Stereo system speakers
- Mirrored forward bulkhead
- Lift-top bed opens to storage area
- Quilted bed spread & pillow shams
- Air conditioning / heater with controls
- Deck hatch w/ screen & privacy blind
- Teak Hi-gloss storage cabinets & hanging locker

Guest Stateroom, Amidship Starboard

- Carpeting
- 15" Sharp TV
- Hanging locker
- Custom wallpaper
- Under bed drawer
- Under bed storage
- Hi-gloss teak cabinets
- Stereo system speakers
- Cross-over upper & lower berths
- Air conditioning / heater with controls

Salon

- Carpeting
- Teak valances
- Telephone jack
- 46" Samsung TV
- Canvas rug runner
- Teak Hi - Lo table
- Cable TV hookups
- Icom Command Mic
- Electric door opener
- Dinette w/ teak table
- Premier Edition decor
- Pioneer HD DVD player
- Amtico flooring at entrance
- Dimmers on overhead lights
- Bose Home Theater System

- Hi-gloss teak walls & cabinets
- Hunter Douglas silhouette blinds
- Fixed, tinted, frameless windows
- Air conditioning / heater with controls
- Electric breaker panel in "up" location
- L-shaped ultra-leather sofa w/ storage
- Bose stereo system with CD / DVD player

Master Head

- A/C vent
- Wallpaper
- Exhaust fan
- Amtico flooring
- Hi-gloss teak cabinet
- Mirrored medicine cabinet
- Custom granite vanity top w/ sink
- Shower w/ single piece shower door
- Deck hatch w/ screen & privacy blind
- Mirrored wall around medicine cabinet
- Overboard, recirculating, holding tank, electric head

Guest Head, Amidship Starboard

- Exhaust fan
- Amtico flooring
- Custom wallpaper
- Hi-gloss teak cabinet
- Granite vanity top w/ sink
- Medicine cabinet w/ mirrored doors
- Shower w/ single piece shower door
- Deck hatch w/ screen & privacy blind
- Mirrored wall around medicine cabinet
- Overboard, recirculating, holding tank, electric head

Galley / Laundry, Main Deck, Port

- Water heater
- Garbage disposal
- Hi-gloss teak cabinets
- Central vacuum system

- Amtico Rosewood flooring
- Microwave oven / Convection oven
- Pressure, dockside fresh water system
- Granite countertops w/ stainless steel sink
- Kenyon surface-mounted four burner, electric stove
- Whirlpool front-loading clothes washer & clothes dryer
- Sub-Zero under counter drawer-style refrigerator & freezer

Helm / Electronics and Navigation

- FLIR
- Compass
- Simrad AP28 auto pilot
- ACR RL-100 Spot light
- (2) Furuno GPS receivers
- (2) Icom 604 VHF radios
- Flush-mounted transducers
- 72mile Furuno 12kW radar
- SAT COM KVH Trac phone
- Cameras in Cockpit & Engine Room
- Furuno 2kW Dual frequency sounder
- (3) Furuno NAV NET black box monitors
- Furuno RD-30 depth, sea temp & knot meter
- KVH Trac Vision TV w/ connection to all (4) TV's
- Clarion stereo system with AM / FM radio, CD player, SAT stereo

Deck

- Anchor
- Bow rail
- Cockpit cover
- Spreader lights
- Navigation lights
- In-direct Cockpit lights
- Walk-thru transom door
- (2) Murray Products teak Helm seats
- Lewmar C4 Capstan electric windlass
- Stainless steel bow cap for anchor line
- Coast Guard approved safety package
- Removable Flybridge jump seat backrest
- Bow anchor locker w/ fresh water wash down
- Fresh water, salt water, pressure Deck wash down system

- 3-sided Costa Clear Bridge enclosure w/ zippered vents forward
- Viking hardtop w/ drop down box for MAN displays & Furuno RD-30

Engine and Mechanical Equipment

- Trim tabs
- Fire alarm
- Bilge blower
- Racor fuel filters
- ZF Transmission
- Oil pressure alarm
- Fire control system
- Engine block heaters
- Electric trolling valves
- Bridge engine controls
- Back-up engine controls
- Engine fuel shut-off valve
- Electric fuel prime pumps
- Back-up AC water pump
- Engine temperature alarm
- Dual power steering pumps
- Electric single lever controls
- Thermal, acoustical insulation
- Moritz System monitor system
- Automatic, manual bilge pumps
- (2) Y-valve emergency bilge pumps
- Cruisair reverse cycle air conditioner
- Delta T Engine Room air box system
- Power Assist hydraulic, wheel steering
- Halon, automatic, manual fire extinguisher
- Remote engine start / stops in Engine Room
- Oil exchange system connection in Cockpit box
- Twin 1550 hp. Diesel I/B 2008 MAN V-12 1550 CRM's w/ 790 hrs.

Electrical System / Equipment

- Dockside cables
- Battery parallel switch
- (2) 24volt Battery banks
- 12v, 24v DC electrical system
- (2) Automatic battery chargers
- 110v, 220v AC electrical system

- Onan 21.5kW generator w/ 750 hrs.
- Glendinning cable master 50 amp / 220 volt dockside cable

Cockpit / Fishing Equipment

- Bait freezer
- Tackle storage
- Rupp outriggers
- (6) Rod holders
- Insulated bait box
- Rupp center rigger
- Eskimo ice machine
- Bait tray and drawer
- In-Deck live bait well
- (4) Cockpit wing rod holders
- In-Deck ice maker discharge box
- Large macerated in-Deck fish box
- 6-rod Rocket launcher (aft Bridge rail)
- Release Marine teak fighting chair w/ 4-rod rocket launcher
- Prepped and pre-wired for electric teaser reels in hard top box

Additional Features / Equipment

- Bow thruster
- Prop pockets
- Under water lights
- Cockpit Mezzanine
- Transom swim steps
- Fiberglass side thru Hulls
- Additional fuel (3 tanks total)
- Spare props w/ storage boxes
- Refrigerated Cockpit drink box
- Fresh water wash down on Bridge
- Refrigerated drink box on Flybridge
- 4-sided Canvas winter Bridge enclosure
- Teak strips in Companionway wall panels
- Release teak Helm pod for single lever controls
- Under-mounted house side hand rails that wraps around front of Bridge overhang

Exclusions

Owner's personal gear and items.

Salesman's Comments

This 54' Viking Convertible has a lot to admire with its powerful styling, state-of-the-art Hull construction, large Cockpit with Mezzanine seating and Three Stateroom / Two Head layout. The high gloss teak interior and upgraded Premier decor complete this beautifully outfitted sport fishing yacht. The "Great Escape" features a set of low hour MAN 1550 horsepower diesel engines that easily cruise at a comfortable 33 knots. She has a full electronics package including both SAT television and communication. The bow thruster and electronic single lever Helm controls make handling this boat a breeze. A change in the owner's plans have made this very well kept Viking available. Don't miss this opportunity to be her next proud owner!

Исключения

При продаже яхты исключаются личные вещи владельца.

Отказ от ответственности

Компания предоставляет описание судна или яхты добросовестно, но не может гарантировать точность этой информации, а также не ручается за техническое состояние. Покупатель должен проинструктировать своих агентов или оценщиков исследовать представленную информацию более подробно, по собственному желанию. Продажа судна или яхты, изменение цены или снятие с продажи будет происходить без предварительного уведомления.

ФОТОГРАФИИ

Profile 2



Profile 3



Profile 4



Profile 5



Bow Profile



**Master Stateroom 1 - Queen Berth w/ Quilted
Bedsread & Pillow Shams**



Master Stateroom 2 - Hanging Locker



Master Stateroom 3 - TV



Guest Stateroom, Forward 1



Guest Stateroom, Forward 2 - TV



Guest Stateroom, Amidship Starboard 1



Guest Stateroom, Amidship Starboard 2



Salon 1



Salon 2



Salon 3



Salon 4 - Dinette



Salon 5



Salon 6 - TV Over Dinette



Salon 7 - Entertainment System



Master Head 1 - Vanity



Master Head 2



Master Head 3 - Shower



Guest Head 1



Guest Head 2 - Shower



Galley 1



Galley 2



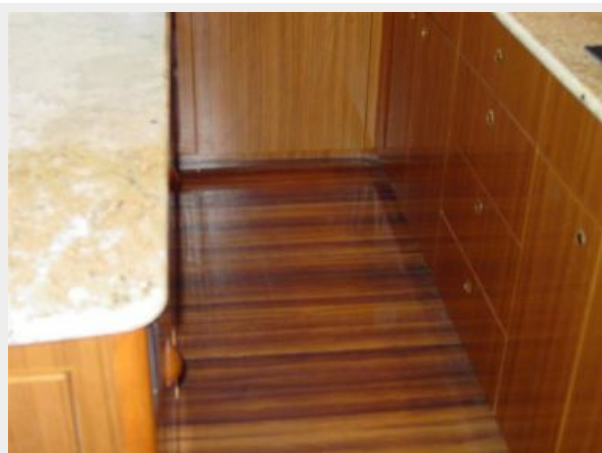
Galley 3



Galley 4 - Under Counter Refrigerators & Freezers



Galley 5 - Flooring



Laundry - Clothes Washer & Clothes Dryer



Helm / Electronics & Navigation 1



Helm / Electronics & Navigation 2



Helm / Electronics & Navigation 3



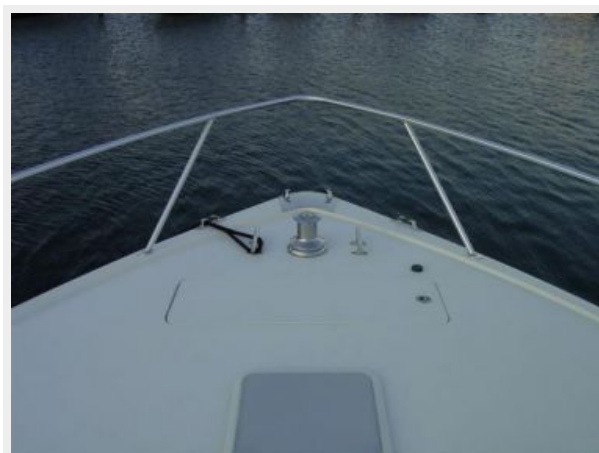
Helm / Electronics & Navigation 4



Helm / Electronics & Navigation 5



Deck 1 - Bow



Deck 2



Deck 3



Deck 4 - Helm Deck



Deck 5 - Seating



Engine & Mechanical Equipment 1 - Engine Room Access



Engine & Mechanical Equipment 2 - Engine Room



Engine & Mechanical Equipment 3



Engine & Mechanical Equipment 4



Engine & Mechanical Equipment 5



Engine & Mechanical Equipment 6



Engine & Mechanical Equipment 7 - Cruisair



Engine & Mechanical Equipment 8



Engine & Mechanical Equipment 9 - Engine Hours



Electrical System / Equipment 1



Electrical System / Equipment 2



Cockpit / Fishing Equipment 1



Cockpit Refrigerated Drink Box



Cockpit Freezer



Cockpit / Fishing Equipment 4



Cockpit / Fishing Equipment 5



Additional Features / Equipment - Spare Props



Profile 7



Profile 8



КОНТАКТЫ

Андрей Шестаков (Andrey Shestakov) – ведущий яхтенный брокер отдела продаж яхт и судов компании Shestakov Yacht Sales Inc. Официальный представитель Shestakov Yacht Sales Inc. для русскоговорящих клиентов в центральном офисе компании в Майами/Форт Лодердейл/Флорида/США.

Контактная информация

Email: andrey@shestakovyachtsales.com

Web: shestakovyachtsales.com

Телефоны

Краснодарский край: **+7(918)465-66-44**

США, Майами, Флорида: **+1(954)274-4435**

Время работы

Понедельник – Суббота: **9:00 - 21:00**
EDT

Воскресенье: **Закрето**

Адрес



Harbour Towne Marina, 850 NE 3rd St,
STE 213, Dania, FL 33004