

ANNAGINE — DYKSTRA



Builder: [Dykstra](#)

Year Built: 2011

Model: Cruising Sailboat

Price: PRICE ON APPLICATION

Location: Spain

LOA: 111' 2" (33.88m)

Beam: 23' 2" (7.06m)

Min Draft: 14' 0" (4.27m)

Our experienced yacht broker, Andrey Shestakov, will help you choose and buy a yacht that best suits your needs **ANNAGINE — Dykstra** from our catalogue. Presently, at Shestakov Yacht Sales Inc., we have a wide variety of yachts available on our sale's list. We also work in close contact with all the big yacht manufacturers from all over the world.

If you would like to buy a yacht **ANNAGINE — Dykstra** or would like help answering any questions concerning purchasing, selling or chartering a yacht, please call **+1(954)274-4435**

TABLE OF CONTENTS

TABLE OF CONTENTS	2
SPECIFICATIONS	3
Overview	3
Basic Information	3
Dimensions	3
Speed, Capacities and Weight	3
Accommodations	4
Hull and Deck Information	4
Engine Information	4
DETAILED INFORMATION	5
Accommodation and Interior	5
Deck Equipment	5
Mechanical	5
Electronics	5
Electrical System	6
Rigging and Sails	6
Exclusions	6
Disclaimer	6
PHOTOS	7
CONTACTS	11
Contact details	11
Telephones	11
Office hours	11
Address	11

SPECIFICATIONS

Overview

Built in 2011 in aluminium by the Dutch shipyard Jacht Ontwikkelings Maatschappij. Annagine has been designed by the renowned Dykstra & Partners Naval Architects.

Her length of 33.9m comfortably accommodates eight guests in a master and two twin staterooms plus two Pullman berths, with two crew cabins forward accomodating upto four crew.

Annagine is a stunning beauty. Dutch-built and delivered in 2011. Annagine is recognized for her unique mixture between style and performance. Sailing her is cruising in the tradition of the 'Grand Classics' with the performance of a modern super-yacht. She is now offered for sale due to a change of plans by her owner, This is a great chance to acquire this new sailing-yacht built to premium Dutch standards.

Basic Information

Category: Cruising Sailboat

Sub Category: Classic Yacht

Model Year: 2011

Year Built: 2011

Country: Spain

Dimensions

LOA: 111' 2" (33.88m)

Beam: 23' 2" (7.06m)

Min Draft: 14' 0" (4.27m)

Speed, Capacities and Weight

Gross Tonnage: 114 Pounds

Water Capacity: 898.1849768 Gallons

Fuel Capacity: 961.58626928 Gallons

Accommodations

Total Cabins: 3

Sleeps: 8

Hull and Deck Information

Hull Material: Aluminum

Hull Color: White

Hull Designer: Jacht Ontwikkelings
Maatschappij

Engine Information

Engines: 1

Manufacturer: Volvo Penta

Model: D7A BTA

Engine Type: Inboard

Fuel Type: Diesel

DETAILED INFORMATION

Accommodation and Interior

Honduras mahogany and cream panelling with chestnut flooring. Annagine offers comfortable accommodation for eight in a master suite and two double cabins with two Pullman berths. Comfortable dining and living area with the latest entertainment equipment. **GALLEY EQUIPMENT** Stainless steel worktop. Gaggenau equipment: cook plate, extractor, oven and microwave Two-doors fridge 500 l. (-4° C). Two-doors freezer 500 l. (-20° C). Two doors fridge 170 l. (-4° C). Miele dishwasher. Marine Air reverse cycle air conditioning throughout the boat. **AUDIO AND VIDEO** Bose Environmental speakers. Bose Lifestyle 38 48 DVD. Bose Lifestyle SA - 2 stereo amplifier. Remote control personal music center.

Deck Equipment

Deck wash system: Sea water deck wash for washing the deck with sea water. Fresh water deck wash with hose connection at anchor windlass. Deck shower at swim platform. Hydraulic controlled boarding platform. Chain: 130 metres, 13 mm galvanised steel with a breaking load of 142 T. Plow anchor: 137 kg. Lewmar 5000 hydraulic windlass. Life rafts: Zodiac 10 persons: ZMEC10 TO XTREM. Inflatable dinghy storage: Dinghy can be stowed on deck aft of the mast. Can be launched by using one of the halyards.

Mechanical

Engine Volvo Penta D7A-B TA 200 hp 2804 engine hours at 13/02/2015 V-drive propulsion line Gearbox type: Twin Disc : MG5050V Ratio: 2.50:1 4 bladed propeller. Fuel tank capacity: 2x 1700 litres + 240 litre day tank in engine room Water tank: 2x1700 litres Watermaker: Schenker - 210 litres/day. Grey water tank: 500 l Black water tank: 500 l Tecma Sanitnautico Silence 24 v electrical toilets flush fresh water. 2x Northern Lights generators: M944 W 26 kW each, 3 phase, 50 Hz. Gen hours at 13/2/14: port 4847 stbd 4800 Hydraulic Lewmar 400TAH bowthruster.

Electronics

Chart plotter: Furuno NavNet 3D. Radar: Furuno MFDBB. GPS: Furuno GP37. A.I.S. (Automatic Identification system): True Heading CTRX. Gyro compass: Alpatron Minicourse. Steering compass: Ritchies FD600 globemaster. Sailing instruments: B&G Hydra 3000. VHF (crew cabin): Sailor RT5022. VHF (navigation desk and cockpit): Simrad (Furuno) RS87. Sailor FleetBroadband satellite communication: Thrane and Thrane. Navtex: Furuno NX 700 B. Inmarsat C : Thrane and Thrane - Sailor TT 3042C. S.A.R.T.: Search and rescue transponder: Kannad Marine. Epirb: Kannad Marine.

Electrical System

DC battery banks: Engine and generator Std starting systems: 24V/25 Ah Generator Pt starting system: 24V/225 Ah. Service system: 24V/1650 Ah. Emergency system: 24V/200 Ah. Battery chargers: 2 x Mastervolt Combi 24/4000-120 1 x Mastervolt Charger 24/100-C 150 litre Flamco boiler installed in the engine room.

Rigging and Sails

RIGGING Masthead sloop with cutter rig. Fully battened mainsail with furling genoa and staysail. Keel stepped mast with three sets of spreaders. Spars: Carbon fibre with three sets of spreaders and rod rigging. Main sail: 294 m². Genoa: 337 m². Furling genoa (yankee): 270 m². Staysail: 111 m². Gennaker: 718 m². Hydraulic Lewmar winches.

Exclusions

Owner's personal belongings.

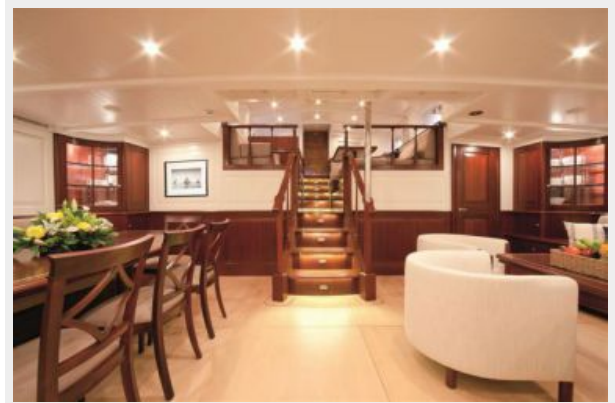
Disclaimer

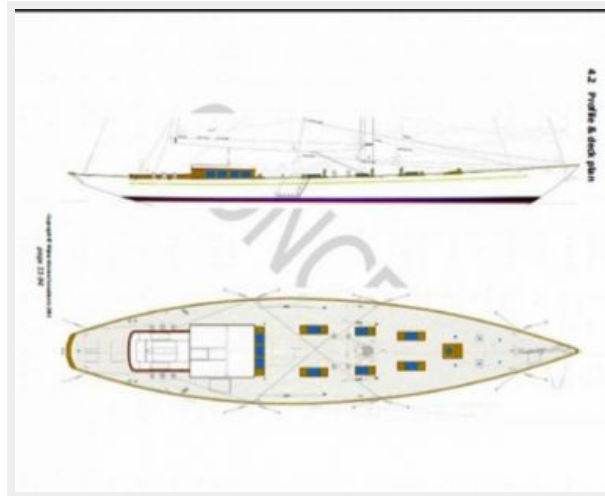
The Company offers the details of this vessel or yacht in good faith but cannot guarantee or warrant the accuracy of this information nor warrant the condition of the vessel. A buyer should instruct his representatives, agents, or his surveyors, to investigate such details as the buyer desires validated. This vessel or yacht is offered subject to prior sale, price change, or withdrawal without notice.

PHOTOS









CONTACTS

Andrey Shestakov, leading yacht broker of the sales department of Shestakov Yacht Sales Inc. Shestakov Yacht Sales Inc., the official representative of the Miami/Fort Lauderdale FL headquarters.

Contact details

Email: andrey@shestakovyachtsales.com

Web: shestakovyachtsales.com/en/

Telephones

USA: +1(954)274-4435

Office hours

Monday – Saturday: **9:00 - 21:00** EDT

Sunday: **closed**

Address



Harbour Towne Marina, 850 NE 3rd St,
STE 213, Dania, FL 33004