

EVENT — AMELS



Builder: [AMELS](#)

Year Built: 2013

Model: Mega Yacht

Price: PRICE ON APPLICATION

Location: Monaco

LOA: 196' 11" (60.00m)

Beam: 33' 11" (10.32m)

Max Draft: 11' 6" (3.50m)

Cruise Speed: 15 Kts. (17 MPH)

Max Speed: 17 Kts. (20 MPH)

Our experienced yacht broker, Andrey Shestakov, will help you choose and buy a yacht that best suits your needs **EVENT — AMELS** from our catalogue. Presently, at Shestakov Yacht Sales Inc., we have a wide variety of yachts available on our sale's list. We also work in close contact with all the big yacht manufacturers from all over the world.

If you would like to buy a yacht **EVENT — AMELS** or would like help answering any questions concerning purchasing, selling or chartering a yacht, please call **+1(954)274-4435**

TABLE OF CONTENTS

TABLE OF CONTENTS	2
SPECIFICATIONS	4
Overview	4
Basic Information	4
Dimensions	4
Speed, Capacities and Weight	5
Accommodations	5
Hull and Deck Information	5
Engine Information	5
PHOTOS	6
EVENT - Running	6
EVENT - Tender slots design	6
EVENT - sidewalks terrace design	6
EVENT - Running with tender and toys	6
EVENT - Scimitar bow	6
EVENT - Additional folding bulwark	6
EVENT - Bow helipad	7
EVENT - General side view	7
EVENT - Superstructure detail	7
EVENT - Spa / Beach deck	7
EVENT - Exterior bridge detail	7
EVENT - Forward sunbath deck with Jacuzzi	7
EVENT - Beach deck with Spa	8
EVENT - Aft Main Deck	8
EVENT - Aft Main Deck	8
EVENT - Aft Sundeck area	8
EVENT - Main Saloon	8
EVENT - Exterior Lounge	8

EVENT - Main Saloon	9
EVENT - Lounge / Cinema	9
EVENT - Dinning Area	9
EVENT - Exterior Lounge	9
EVENT - Lounge	9
EVENT - Full beam Master	9
EVENT - Full beam Master	10
EVENT - VIP Stateroom	10
EVENT - VIP Stateroom	10
EVENT - VIP Stateroom	10
EVENT - Guest Stateroom	10
EVENT - VIP Stateroom	10
EVENT - Guest Stateroom	11
EVENT - Guest Stateroom	11
EVENT - Bridge	11
EVENT - Interior detail	11
EVENT - Galley	11
EVENT - Laundry	11
CONTACTS	12
Contact details	12
Telephones	12
Office hours	12
Address	12

SPECIFICATIONS

Overview

60-metre built by AMELS and exclusively managed and supervised by Imperial, with exterior design by Tim Heywood and interior design by Laura Sessa, EVENT is a remarkable achievement awarded in 2014 at the World Superyacht Awards. A motoryacht with contemporary exterior styling complemented by her elegant interior, while the quality of the build was beyond reproach.

Characterised by her scimitar bow, which gives a longer waterline to the yacht, EVENT is the first Limited Edition 199 series built by AMELS. Highly customized, with notable features include an enclosed sundeck area, helipad, additional folding bulwark and a marvellous spa/sunbathing space on the stern. Additional design part: the tenders are stowed within the bow, giving her a higher behaviour with these stylish details. The yacht is being sold with limo tender designed by Tim Heywood especially for EVENT.

EVENT has exclusive and very expensive interior. The yacht can accommodate up to 12 guests in 6 staterooms : full-beam master suite on the main deck with opening balconies, two VIP staterooms on the bridge deck, and a double stateroom + two twins are located on the lower deck. All staterooms have ensuite facilities and stunning assets. The yacht's special feature is a spacious beach club with spa and gym areas.

Basic Information

Category: Mega Yacht

Model Year: 2013

Year Built: 2013

Country: Monaco

Vessel Top: Raised Pilothouse

Fly Bridge: Yes

Helipad: Yes

Dimensions

LOA: 196' 11" (60.00m)

LWL: 195' 11" (59.70m)

LOD: 196' 11" (60.00m)

Beam: 33' 11" (10.32m)

Max Draft: 11' 6" (3.50m)

MFG Length: 196' 11" (60.00m)

Speed, Capacities and Weight

Cruise Speed: 15 Kts. (17 MPH)

Cruise Speed RPM: 1600 Kts.

Cruise Speed Range: 4600

Max Speed: 17 Kts. (20 MPH)

Displacement: 2466972711.78 Pounds

Gross Tonnage: 1 Pounds

Water Capacity: 37600 Gallons

Fuel Capacity: 149000 Gallons

Accommodations

Total Cabins: 6

Total Berths: 12

Sleeps: 13

Captain Cabin: True

Crew Berths: 15

Crew Sleeps: 15

Crew Heads: 15

Hull and Deck Information

Hull Material: Steel

Deck Material: Aluminum

Hull Color: Grey

Hull Designer: AMELS

Exterior Designer: Tim Heywood

Interior Designer: Laura Sessa

Engine Information

Engines: 2

Manufacturer: Caterpillar

Model: 3512C

Fuel Type: Diesel

PHOTOS

EVENT - Running



EVENT - Tender slots design



EVENT - Running with tender and toys



EVENT - sidewalks terrace design



EVENT - Scimitar bow



EVENT - Additional folding bulwark



EVENT - Bow helipad



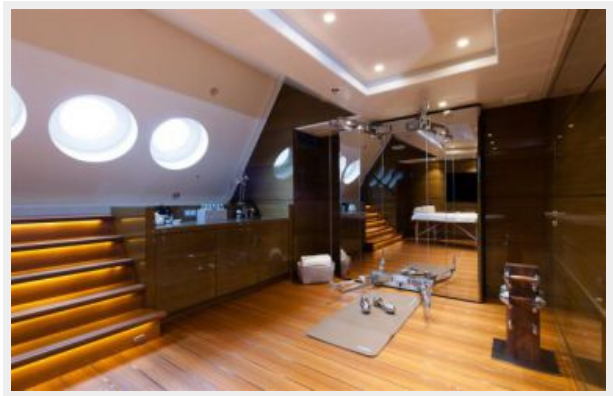
EVENT - General side view



EVENT - Superstructure detail



EVENT - Spa / Beach deck



EVENT - Exterior bridge detail



EVENT - Forward sunbath deck with Jacuzzi



EVENT - Aft Main Deck



EVENT - Beach deck with Spa



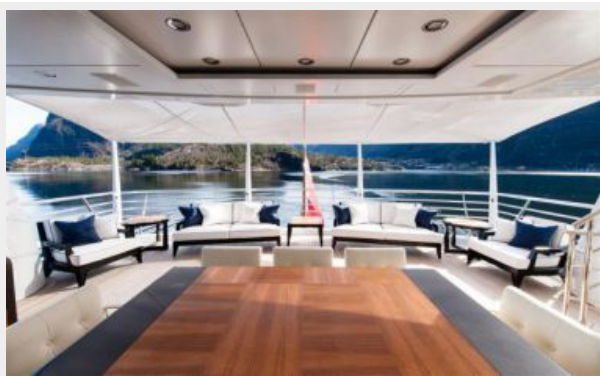
EVENT - Aft Sundeck area



EVENT - Aft Main Deck



EVENT - Exterior Lounge



EVENT - Main Saloon



EVENT - Main Saloon



EVENT - Lounge / Cinema



EVENT - Dining Area



EVENT - Exterior Lounge



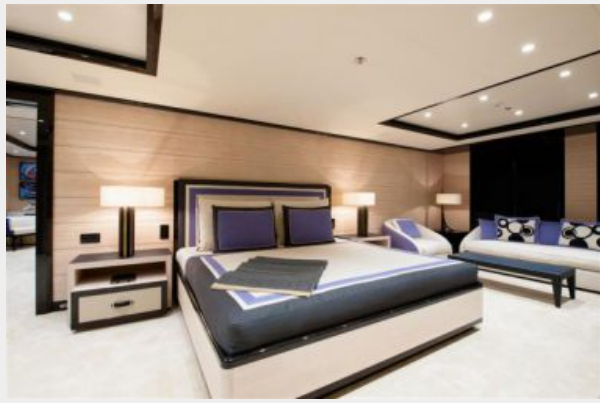
EVENT - Lounge



EVENT - Full beam Master



EVENT - Full beam Master



EVENT - VIP Stateroom



EVENT - VIP Stateroom



EVENT - VIP Stateroom



EVENT - VIP Stateroom



EVENT - Guest Stateroom



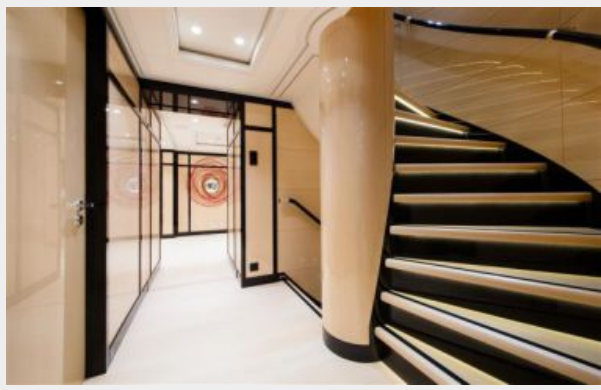
EVENT - Guest Stateroom



EVENT - Guest Stateroom



EVENT - Interior detail



EVENT - Bridge



EVENT - Galley



EVENT - Laundry



CONTACTS

Andrey Shestakov, leading yacht broker of the sales department of Shestakov Yacht Sales Inc. Shestakov Yacht Sales Inc., the official representative of the Miami/Fort Lauderdale FL headquarters.

Contact details

Email: andrey@shestakovyachtsales.com

Web: shestakovyachtsales.com/en/

Telephones

USA: +1(954)274-4435

Office hours

Monday – Saturday: **9:00 - 21:00** EDT

Sunday: **closed**

Address



Harbour Towne Marina, 850 NE 3rd St,
STE 213, Dania, FL 33004