

## METEORA — CHEOY LEE



**Судостроитель:** CHEOY LEE

**Год постройки:** 1983

**Модель:** Крейсерская яхта

**Цена:** **ЦЕНА ЯХТЫ ПО ЗАПРОСУ**

**Местонахождение:** United States

**Длина общая:** 43' 0" (13.11m)

**Ширина:** 13' 3" (4.04m)

**Макс. осадка:** 5' 6" (1.68m)

**Крейс. скорость:** 6 Kts. (7 MPH)

Купить **METEORA — CHEOY LEE** а также выбрать подходящую вам яхту из нашего каталога яхт вам поможет опытный яхтенный брокер Андрей Шестаков. На сегодняшний день компания **Shestakov Yacht Sales Inc.** имеет большое количество яхт в собственном списке продаж, а также тесно сотрудничает со всеми крупными яхтенными производителями по всему миру.

Для того чтобы купить яхту **METEORA — CHEOY LEE** а также проконсультироваться по любому вопросу связанному с покупкой, продажей, чартером яхт позвоните по телефону **+7(918)465-66-44**.

# ОГЛАВЛЕНИЕ

---

ОГЛАВЛЕНИЕ	2
ХАРАКТЕРИСТИКИ	3
Обзор	3
Основная информация	4
Размеры	4
Скорость, вместимость и масса	5
Размещение	5
Корпус и палуба	5
Информация о двигателе	5
ФОТОГРАФИИ	6
КОНТАКТЫ	16
Контактная информация	16
Телефоны	16
Время работы	16
Адрес	16

# ХАРАКТЕРИСТИКИ

## Обзор

**HARD TO FIND PILOTHOUSE AWLGRIP PAINT JOB FIBERGLASS DECKS WITH NON-SKID NEW STANDING RIGGING IN 2010 MAIN, GENOA and SPINNAKER new in 2010 SIDE POWER BOW THRUSTER 2000 MILE RANGE UNDER POWER STAINLESS PORTS NEW BOTTOM JOB DEC 2014**

This Cheoy Lee 43 is one of the best cared for examples of this stout Bob Perry designed yacht. The Pilothouse, with interior steering, provides great visibility and keeps you warm and dry on those days of unfavorable conditions. This particular yacht has had the teak decks removed, deck coring replaced where needed, was re-glassed and professionally painted during a \$200,000 refit in 2004/2005. New standing rigging with Norseman fittings and new sails were done in 2010. She will provide good sailing performance and offers the comfort of a huge live-aboard passage making vessel that is ready to sail away in style.

The refit also included a redesigned and raised main settee that provides extra storage and, more importantly, the ability to look out of the large windows while at anchor. The interior of this yacht is very bright with newer upholstery. Trucked over from Washington State to Florida in 2014.

**CALL TODAY TO FIND OUT MORE ON THIS TRUE BLUEWATER PILOTHOUSE CRUISER.**

This Cheoy Lee 43 is one of the best cared for examples of this stout Bob Perry designed yacht. The Pilothouse, with interior steering, provides great visibility and keeps you warm and dry on those days of unfavorable conditions. This particular yacht has had the teak decks removed, deck coring replaced where needed, was re-glassed and professionally painted during a \$200,000 refit in 2004/2005. New standing rigging with Norseman fittings and new sails were done in 2010. She will provide good sailing performance and offers the comfort of a huge live-aboard passage making vessel that is ready to sail away in style.

The refit also included a redesigned and raised main settee that provides extra storage and, more importantly, the ability to look out of the large windows while at anchor. The interior of this yacht is very bright with newer upholstery. Trucked over from Washington State to Florida in 2014.

**CALL TODAY TO FIND OUT MORE ON THIS TRUE BLUEWATER PILOTHOUSE CRUISER.**

**Specs Keel: Full Engines Engine 1: Engine Brand: Lehman Engine Type: Inboard Engine/Fuel Type: Diesel Engine Hours: 4000 Engine Power: 120 HP**

**Builder / Designer BUILDER:** Cheoy Lee      **DESIGNER:** Robert Perry

**Dimensions LOA:** 43 ft / 13.1 meters **LWL:** 36 ft 10 in / 11.23 m **BEAM:** 13 ft 3 in / 4.03 m **DRAFT:** 5 ft 6 in / 1.67 m **BRIDGE CLEARANCE:** 56 ft / 17.06 m **DISPLACEMENT:** 36,000

**lbs / 16,330 kgs BALLAST: 12,000 lbs / 5443 kgs**

**Tankage FUEL: 500 gal in 2 fiberglass tanks / 1892 ltr WATER: 300 gal in 2 fiberglass tanks / 1136 ltr HOLDING: 30 gal / 113 ltr**

**Engines BRAND: Lehman POWER: 120 hp HRS: 4000 reported CRUISING SPEED: 6-8 knots GENERATOR: None BOW THRUSTER: Side Power**

**Accommodations Master stateroom forward with centerline queen. Private head with shower. There are lockers above the berth, drawers under and a hanging locker aft on the port side. An ensuite master head (electric flush) is located to starboard. Coming aft and up a couple of steps is the main salon with long U-shaped settee and dinette table on starboard. The main settee/dinette was redesigned to add extra storage and visibility to look out from seating areas. Across from dinette/settee is a large galley to port with plenty of cabinet storage and counterspace. Up a couple of steps is the pilot house. Large chart table is located behind the captain's helm seat. A small settee is opposite on starboard. Down a few steps are two aft cabins, 1 double, 1 single, and a shared guest head (manual flush).**

**SAILS New Genoa, Main and Spinnaker in 2010 New Boom in 2010 New Deck Hardware in 2010 New Standing Rigging 2005 Norsemen Fittings Self Tailing Winches Shaefer Roller Furling on Head Sail Antal Bat Cars on Mast**

**Electrical AC / DC Electrical Panel Freedom Marine 25 Charger/Inverter Windlass (Electric) with Remote Control from Deck or Pilothouse Three (3) House Batteries Two (2) Separate Batteries for Engine Starting and Bow Thruster Air Conditioner (not completely installed)**

**Electronics Garmin 740s Chartplotter ComNav 1101 Autopilot ICOM IC-M602 VHF w/DSC Furuno Radar Side Power Bow Thruster Raccor Filter Pressure Gauge**

## Основная информация

**Тип судна:** Крейсерская яхта

**Модельный год:** 1983

**Год постройки:** 1983

**Страна:** United States

## Размеры

**Длина общая:** 43' 0" (13.11m)

**Длина по ватерлинии:** 36' 10" (11.23m)

**Ширина:** 13' 3" (4.04m)

**Макс. осадка:** 5' 6" (1.68m)

**Трапы:** 56' 0" (17.07m)

---

## Скорость, вместимость и масса

---

**Крейс. скорость:** 6 Kts. (7 MPH)

**Водоизмещение:** 36000 Pounds

**Вместимость воды:** 300 Gallons

**Вместимость сточного бака:** 30 Gallons

**Объем топливного бака:** 500 Gallons

---

## Размещение

---

**Всего кают:** 3

---

## Корпус и палуба

---

**Материал корпуса:** Fiberglass

**Отделка корпуса:** Fiberglass

---

## Информация о двигателе

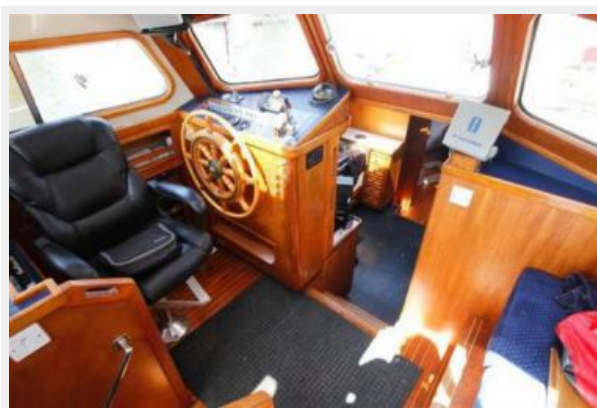
---

**Производитель:** Lehman

# ФОТОГРАФИИ



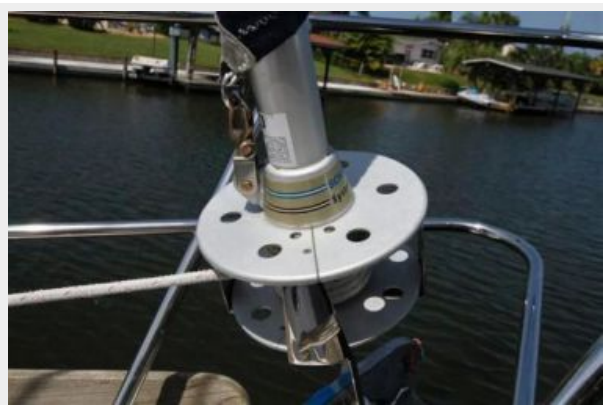


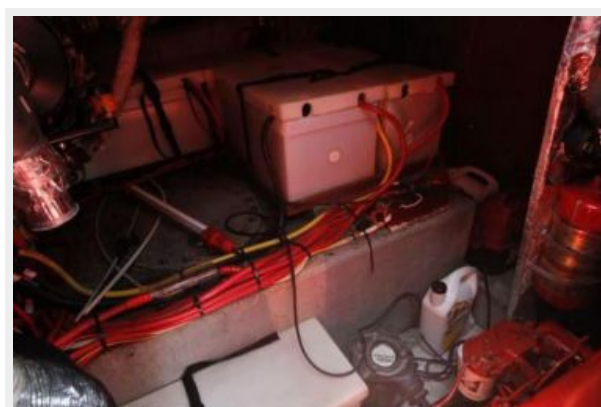






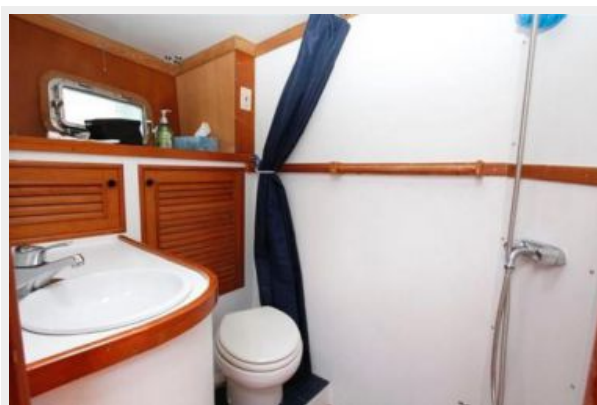
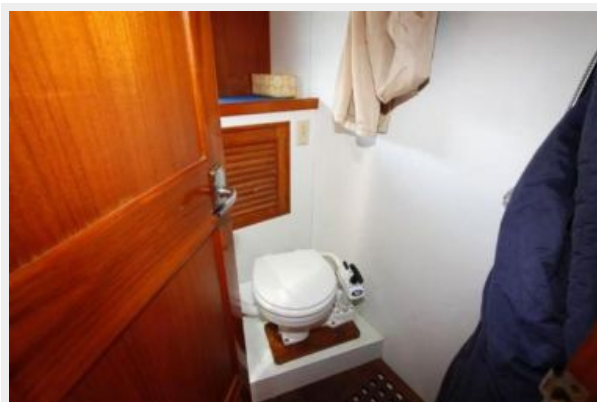












# КОНТАКТЫ

---

Андрей Шестаков (Andrey Shestakov) – ведущий яхтенный брокер отдела продаж яхт и судов компании Shestakov Yacht Sales Inc. Официальный представитель Shestakov Yacht Sales Inc. для русскоговорящих клиентов в центральном офисе компании в Майами/Форт Лодердейл/Флорида/США.

## Контактная информация

---

Email: [andrey@shestakovyachtsales.com](mailto:andrey@shestakovyachtsales.com)

Web: [shestakovyachtsales.com](http://shestakovyachtsales.com)

## Телефоны

---

Краснодарский край: **+7(918)465-66-44**

США, Майами, Флорида: **+1(954)274-4435**

## Время работы

---

Понедельник – Суббота: **9:00 - 21:00**  
EDT

Воскресенье: **Закрето**

## Адрес

---



Harbour Towne Marina, 850 NE 3rd St,  
STE 213, Dania, FL 33004