

ELEANOR'S ISLAND



Year Built: 1985

Model: Sloop

Price: **PRICE ON APPLICATION**

LOA: 26' (7.92mm)

Beam: 10.5

Max Draft: 3' 9" (1.14mm)

Cruise Speed: 6 Knots Kts. (7 MPH)

Our experienced yacht broker, Andrey Shestakov, will help you choose and buy a yacht that best suits your needs **ELEANOR'S ISLAND** — n/a from our catalogue. Presently, at Shestakov Yacht Sales Inc., we have a wide variety of yachts available on our sale's list. We also work in close contact with all the big yacht manufacturers from all over the world.

If you would like to buy a yacht **ELEANOR'S ISLAND** — n/a or would like help answering any questions concerning purchasing, selling or chartering a yacht, please call **+1(954)274-4435**

TABLE OF CONTENTS

TABLE OF CONTENTS	2
SPECIFICATIONS	5
Basic Information	5
Dimensions	5
Speed, Capacities and Weight	5
Accommodations	5
Hull and Deck Information	5
Engine Information	5
PHOTOS	6
Bow On	6
Robust "Free Standing" Mast	6
Double Bow Rollers w/Anchors	6
Double Chain Lockers	6
Portside View	6
Lazy Jack/with Mainsail Cover	6
Wishbone Boom	7
Protective covers over hatch	7
End of Boom Tackle	7
View from stern	7
Destroyer w/Compass on Binnacle	7
Cockpit Folding Table	7
Ventilated Hatchboards w/line & instrument protection	8
Great visibility forward from helm station	8
Line Pocket	8
Two Solar Vents Port & Starboard	8
Engine Instruments w/461 total Hrs.	8
Tack Tic "Wireless" Wind Instrument	8
DataMarine Depth Finder	9

Cabin Top Mainsail Halyard Winch	9
Barient 18-2 Speed Self Tailing Primary	9
Clutches led to Cockpit	9
Engine Cluster-Oil, Water, Fuel, RPM	9
Battery Tender "mini" battery below	9
Cover on Emergency Tiller access	10
Propane Tank compartment	10
Transom Boarding Ladder	10
Headliner w/hatch sun cover visible	10
Portside Aft Berth	10
2nd Bilge w/auto Float Switch	10
Primary Bilge Pump	11
Heater for hot water	11
Manual Head	11
Forward "V" Storage	11
Starboard Forward "V" Storage	11
Port Forward "V" Storage	11
Looking Forward from Hatchway	12
Portside View from Forward Cabin	12
Starboard View	12
Horseshoe Ring and First Aid Kit	12
Starboard Aft Single Berth	12
Starboard Settee & Berth	12
Easy Access to Electronics	13
Horizon VHF Radio	13
2-Burner Propane Stove	13
Storage behind stove for cutting board	13
Stove Cover/Cutting board	13
Single SS Sink with H/C water	13

Refrigerator w/ice tray	14
Propane Gas safety Indicator	14
Wash Basin In Head w/Pull out Shower	14
Dehumidifier	14
21hp 3 Cylinder Westerbeke Engine	14
Duel Power Switches w/ Off/ 1/2	14
12 Volt Panel	15
120V House Panel	15
120V Pig Tail & Extra 2-Blade Prop	15
Screen Storage in aft berth	15
Sail & Floor Plans	15
Starboard Aft Storage Locker/Whaler Emergency Pump	15
CONTACTS	16
Contact details	16
Telephones	16
Office hours	16
Address	16

SPECIFICATIONS

Basic Information

Category: Sloop

Model Year: 1985

Year Built: 1985

Dimensions

LOA: 26' (7.92mm)

LWL: 24' 6" (7.47mm)

Beam: 10.5

Max Draft: 3' 9" (1.14mm)

Speed, Capacities and Weight

Cruise Speed: 6 Knots Kts. (7 MPH)

Water Capacity: 30 Gallons

Holding Tank: 25 Gal Gallons

Fuel Capacity: 24 Gal Gallons

Accommodations

Total Cabins: 1

Total Berths: 4

Sleeps: 4

Total Heads: 1

Hull and Deck Information

Hull Material: Fiberglass

Deck Material: Fiberglass

Engine Information

Engines: 1

Manufacturer: Westerbeke

Engine Type: Inboard

Fuel Type: Diesel

PHOTOS

Bow On



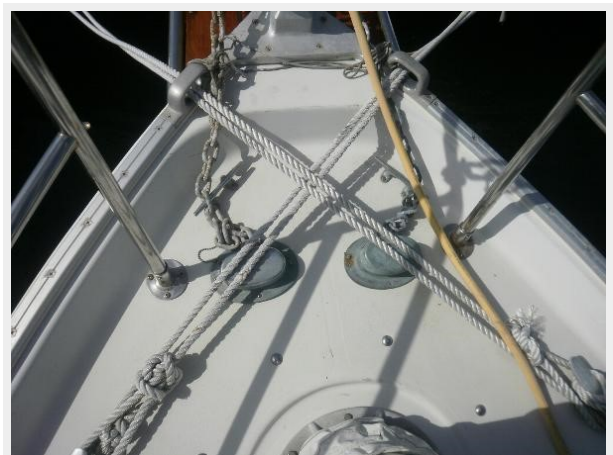
Robust "Free Standing" Mast



Double Bow Rollers w/Anchors



Double Chain Lockers



Portside View



Lazy Jack/with Mainsail Cover



Wishbone Boom



Protective covers over hatch



End of Boom Tackle



View from stern



Destroyer w/Compass on Binnacle



Cockpit Folding Table



Great visibility forward from helm station



Ventilated Hatchboards w/line & instrument protection



Line Pocket



Two Solar Vents Port & Starboard



Engine Instruments w/461 total Hrs.



Tack Tic "Wireless" Wind Instrument



DataMarine Depth Finder



Cabin Top Mainsail Halyard Winch



Barient 18-2 Speed Self Tailing Primary



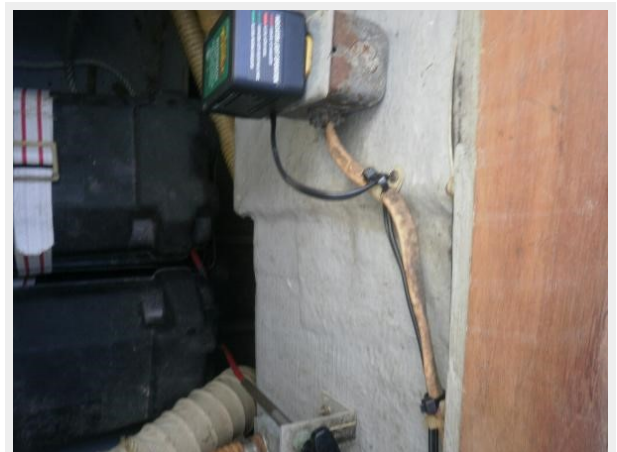
Clutches led to Cockpit



Engine Cluster-Oil, Water, Fuel, RPM



Battery Tender "mini" battery below



Cover on Emergency Tiller access



Propane Tank compartment



Transom Boarding Ladder



Headliner w/hatch sun cover visible



Portside Aft Berth



2nd Bilge w/auto Float Switch



Primary Bilge Pump



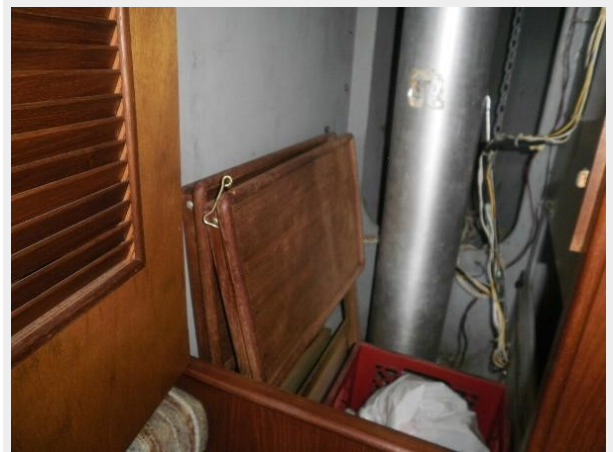
Heater for hot water



Manual Head



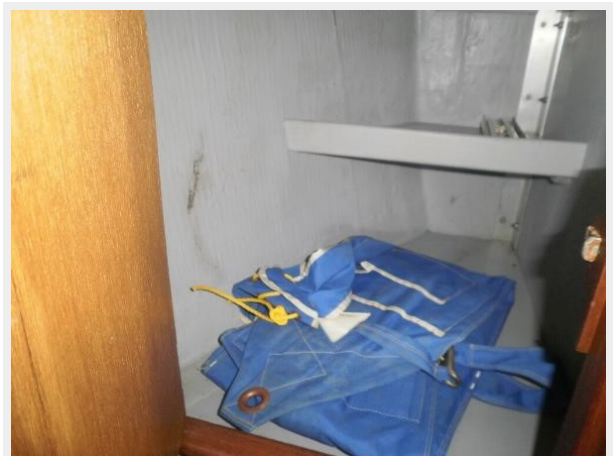
Forward "V" Storage



Starboard Forward "V" Storage



Port Forward "V" Storage



Looking Forward from Hatchway



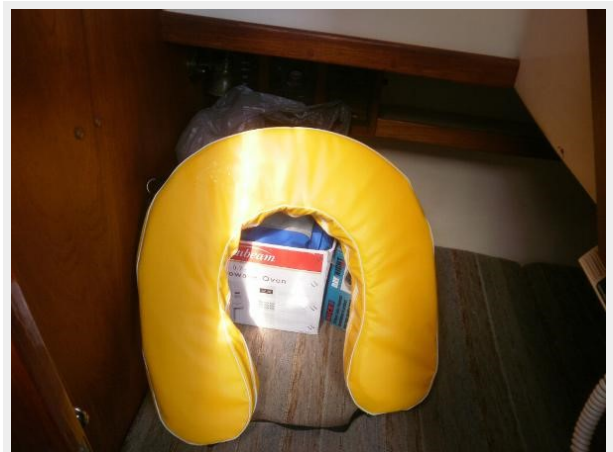
Portside View from Forward Cabin



Starboard View



Horseshoe Ring and First Aid Kit



Starboard Aft Single Berth



Starboard Settee & Berth



Easy Access to Electronics



Horizon VHF Radio



2-Burner Propane Stove



Storage behind stove for cutting board



Stove Cover/Cutting board



Single SS Sink with H/C water



Refrigerator w/ice tray



Propane Gas safety Indicator



Wash Basin In Head w/Pull out Shower



Dehumidifier



21hp 3 Cylinder Westerbeke Engine



Duel Power Switches w/ Off/ 1/2



12 Volt Panel



120V House Panel



120V Pig Tail & Extra 2-Blade Prop



Screen Storage in aft berth



**Starboard Aft Storage Locker/Whaler
Emergency Pump**



Sail & Floor Plans



CONTACTS

Andrey Shestakov, leading yacht broker of the sales department of Shestakov Yacht Sales Inc. Shestakov Yacht Sales Inc., the official representative of the Miami/Fort Lauderdale FL headquarters.

Contact details

Email: andrey@shestakovyachtsales.com

Web: shestakovyachtsales.com/en/

Telephones

USA: +1(954)274-4435

Office hours

Monday – Saturday: **9:00 - 21:00** EDT

Sunday: **closed**

Address



Harbour Towne Marina, 850 NE 3rd St,
STE 213, Dania, FL 33004