

## INNISFREE — JENCO MARINE



**Судостроитель:** JENCO MARINE

**Год постройки:** 1970

**Модель:** Крейсерская яхта

**Цена:** **ЦЕНА ЯХТЫ ПО ЗАПРОСУ**

**Местонахождение:** United States

**Длина общая:** 40' 0" (12.19m)

**Макс. осадка:** 5' 6" (1.68m)

Купить Innisfree — JENCO MARINE а также выбрать подходящую вам яхту из нашего каталога яхт вам поможет опытный яхтенный брокер Андрей Шестаков. На сегодняшний день компания Shestakov Yacht Sales Inc. имеет большое количество яхт в собственном списке продаж, а также тесно сотрудничает со всеми крупными яхтенными производителями по всему миру.

Для того чтобы купить яхту Innisfree — JENCO MARINE а также проконсультироваться по любому вопросу связанному с покупкой, продажей, чартером яхт позвоните по телефону **+7(918)465-66-44**.

# ОГЛАВЛЕНИЕ

---

ОГЛАВЛЕНИЕ	2
ХАРАКТЕРИСТИКИ	3
Обзор	3
Основная информация	6
Размеры	6
Размещение	6
Корпус и палуба	7
Информация о двигателе	7
ФОТОГРАФИИ	8
КОНТАКТЫ	16
Контактная информация	16
Телефоны	16
Время работы	16
Адрес	16

---

# ХАРАКТЕРИСТИКИ

---

## Обзор

---

### Legendary Performance From a Classic Beauty

The Cal 40 represents a major turning point for offshore yacht design. With its fin keel and spade rudder, the radical design was not taken seriously by the other offshore designers of the 1960's. She quickly proved to be a complete success and was almost unbeatable in the ocean racing circuit. The boat was designed to be light, and fast- especially off the wind. Several racing sailors have surfed the boat down rollers at sustained boat speeds of 15 knots. Not bad even when compared even to today's modern designed 40 footers.

The Cal 40 was inducted into the American Sailboat Hall of Fame in 1996. Her classic good looks will turn heads everywhere she goes.

Innisfree's owner of the past 20 years has been steadily updating and refitting her. She is set up for day sailing now, but could be set up for cruising again with a few additions.

In order to cruise again she will need a new water tank (easily accessed under pull up floorboard), oven/range, battery charger, electronics, and refrigeration.

Please see the full specs section for a list of completed renovations.

Highlights include:

- Westerbeke W40 Diesel
- Hull Awlgrippd in 2010
- New stainless steel mast compression beam 2005
- AirHead composting toilet
- Interior redesigned and rebuilt for more open space and larger berths
- Interior completely Awlgrippd in 2005
- Mast Awlgrippd and rewired in 2005

**Specs** Builder: Jensen Marine Designer: C. William Lapworth Keel: Fin **Dimensions** LOA: 40 ft 0 in Beam: 11 ft 0 in LWL: 30 ft 4 in Maximum Draft: 5 ft 6 in Dry Weight: 15000 lbs **Engines** Engine 1: Engine Brand: Westerbeke Engine Model: 40 Engine Type: Inboard Engine/Fuel Type: Diesel Propeller: 3 blade propeller Drive Type: V Drive Engine Power: 40 HP **Accommodations** Number of twin berths: 2 Number of cabins: 1 Number of heads: 1 **Outside Equipment/Extras** Manual windlass

### Vessel Walkthrough

Entering from the centerline companionway, the salon is one large open space. There are opposing settees that are large enough to sleep two to port and starboard and an opening hatch overhead. There is a removable center line drop leaf table that can be stored out of the way just

forward of the port settee. The aft port quarter is home to a small but usable galley, and to starboard is a large ice box that can double as a chart table. The Westerbeke diesel is accessed via the engine box that is integral to the companionway ladder. The port and starboard coffin berths have been converted into storage with custom cabinet doors. Walking forward through the salon, there is a large head with composting toilet and hanging locker to starboard. The v-berth is all the way forward with opening overhead hatch and drawer storage.

## Cockpit

- Edison Wheel steering
- Emergency tiller mount
- Cockpit cushions is great condition
- Easy access to all primary winches from helm
- Teak cockpit coaming
- Garmin 440 GPS at helm

## Galley

- Double stainless steel sink
- Pressure water pump (needs water tank)
- Space for LPG Range and Stove (not installed)
- AC outlet
- Large icebox (refrigeration is not installed)

## Head

- Airhead Composting head
- Sink with pressurized water (needs new water tank)

## Mechanical and Electrical

- Westerbeke 40hp diesel (hour meter is not functional)
- Walter v-drive
- Wheel steering
- Tri-Color on masthead
- Running lights
- LED interior lighting

## Sails and Rigging

- Standing rigging replaced within past five years
- Harken Furler on headsail
- Mainsail- Full battened (good condition)
- Genoa (Schurr Sails 2012)

- Dodger (New 2012)
- Mainsail cover (New 2012)
- Cockpit cushions (New 2012)
- Asymmetrical Spinnaker
- Tides Strong Track Mainsail Slide System
- Spreader lights
- Mast Awlgrippped and rewired (2005)

## Completed projects

Over the past 20 years, Innisfree's owner has completed several major renovations to the boat. Here is a partial list of his completed projects.

- Removed pilot berths and created larger settees.
- Made custom teak slatted storage cabinets over settees port and starboard.
- Removed and replaced the rusty mast step beam.
- Replaced all interior bulkheads. (2005)
- Repainted interior with white Alwgrip (2005).
- New overhead opening hatches
- Replaced much of the standing rigging
- Removed head and holding tank and installed Airhead composing head
- Barrier coated under water surfaces
- Painted hull and deck with Awlgrip (2005)
- Added secondary water tank under v-berth
- Removed main water tank (needs to be replaced)
- Replaced both Lewmar hatches
- Coated fuel tank with Rino-liner
- Bottom painted (2014)
- Epoxy barrier coat (2014)
- Mast pulled and Awlgrippped- and rewired

## Additional systems needed to cruise

In my opinion the following systems will need to be installed in order to convert Innisfree into a cruiser.

- Needs a new fresh water tank. (Original was removed. Very easy access to tank location under the centerline removable floorboards.
- Needs 12V refrigeration
- Needs 110V battery charger for shore power charging
- Needs a propane oven/ stove and associated components

## Brokers Remarks

Innisfree is a beautiful example of a legendary racer/cruiser. She is ready to daysail or race in her current condition. She could easily be converted to a cruiser with the additions of a few systems. See my recommendations above.

The Cal 40 represents a major turning point for offshore yacht design. With its fin keel and spade rudder, the radical design was not taken seriously by the other offshore designers of the 1960's. She quickly proved that the design a complete success and was almost unbeatable in the ocean racing circuit. The boat was designed to be light, and fast- especially off the wind. Several racing sailors have surfed the boat down rollers at sustained boat speeds of 15 knots. Not bad even when compared even to today's modern designed 40 footers.

The Cal 40 was inducted into the American Sailboat Hall of Fame in 1996. Her classic good looks will turn heads everywhere she goes.

Innisfree's owner of the past 20 years has been steadily updating and refitting her. She is set up for day sailing now, but could be set up for cruising again with a few additions.

In order to cruise again she will need a new water tank (easily accessed under pull up floorboard), oven/range, battery charger, electronics, and refrigeration.

## Основная информация

---

**Тип судна:** Крейсерская яхта

**Модельный год:** 1970

**Год постройки:** 1970

**Страна:** United States

## Размеры

---

**Длина общая:** 40' 0" (12.19m)

**Длина по ватерлинии:** 30' 4" (9.25m)

**Макс. осадка:** 5' 6" (1.68m)

**Трапы:** 11' 0" (3.35m)

## Размещение

---

**Всего кают:** 1

**Всего коек:** 2

**Спальные места:** 4

**Всего ком. состава:** 1

## Корпус и палуба

---

**Материал корпуса:** Fiberglass

## Информация о двигателе

---

**Двигатели:** 1

**Производитель:** Westerbeke

**Модель:** 40

**Тип двигателя:** Inboard

**Тип топлива:** Diesel

# ФОТОГРАФИИ







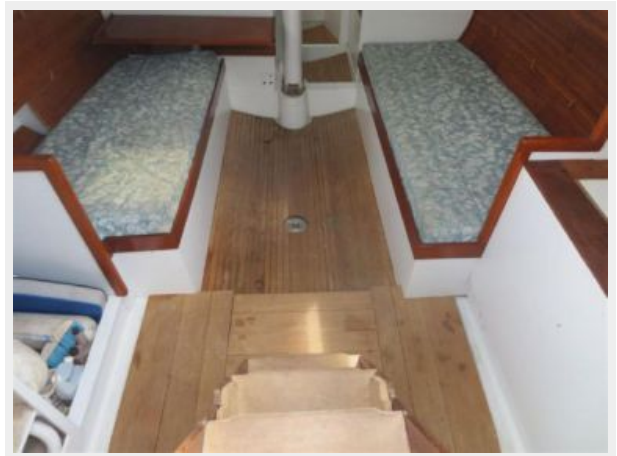












# КОНТАКТЫ

---

Андрей Шестаков (Andrey Shestakov) – ведущий яхтенный брокер отдела продаж яхт и судов компании Shestakov Yacht Sales Inc. Официальный представитель Shestakov Yacht Sales Inc. для русскоговорящих клиентов в центральном офисе компании в Майами/Форт Лодердейл/Флорида/США.

## Контактная информация

---

Email: [andrey@shestakovyachtsales.com](mailto:andrey@shestakovyachtsales.com)

Web: [shestakovyachtsales.com](http://shestakovyachtsales.com)

## Телефоны

---

Краснодарский край: **+7(918)465-66-44**

США, Майами, Флорида: **+1(954)274-4435**

## Время работы

---

Понедельник – Суббота: **9:00 - 21:00**  
EDT

Воскресенье: **Закрето**

## Адрес

---



Harbour Towne Marina, 850 NE 3rd St,  
STE 213, Dania, FL 33004