

## ALOHA — PRINCESS YACHTS



**Судостроитель:** PRINCESS YACHTS

**Год постройки:** 2008

**Модель:** Моторная яхта

**Цена:** **ЦЕНА ЯХТЫ ПО ЗАПРОСУ**

**Местонахождение:** United States

**Длина общая:** 58' 0" (17.68m)

**Ширина:** 15' 2" (4.62m)

**Крейс. скорость:** 31 Kts. (36 MPH)

**Макс. скорость:** 38 Kts. (44 MPH)

Купить **ALOHA — PRINCESS YACHTS** а также выбрать подходящую вам яхту из нашего каталога яхт вам поможет опытный яхтенный брокер Андрей Шестаков. На сегодняшний день компания **Shestakov Yacht Sales Inc.** имеет большое количество яхт в собственном списке продаж, а также тесно сотрудничает со всеми крупными яхтенными производителями по всему миру.

Для того чтобы купить яхту **ALOHA — PRINCESS YACHTS** а также проконсультироваться по любому вопросу связанному с покупкой, продажей, чартером яхт позвоните по телефону **+7(918)465-66-44**.

# ОГЛАВЛЕНИЕ

ОГЛАВЛЕНИЕ	2
ХАРАКТЕРИСТИКИ	4
Обзор	4
Основная информация	4
Размеры	4
Скорость, вместимость и масса	4
Размещение	4
Корпус и палуба	4
Информация о двигателе	5
ПОДРОБНОЕ ОПИСАНИЕ	6
Manufacturer Provided Description	6
Salon	6
Galley	6
Accommodations	7
Electronics	7
Inside Equipment	8
Helm	8
Engine Room	9
Engine Room/Mechanical & Electrical Equipment	9
Outside Deck	10
Miscellaneous	11
Additional Equipment	11
Исключения	12
Отказ от ответственности	12
ФОТОГРАФИИ	13
Helm	13
Helm	13
Helm	13

---

Dinette	13
Salon	13
Helm	13
Salon - Galley	14
Galley	14
Forward VIP Head	14
Forward VIP Stateroom	14
Master Head	15
Master Stateroom	15
Twin Stateroom	15
Rudder/Generator Room	15
Rudder/Generator Room	16
Rudder/Generator Room	16
Rudder/Generator Room	16
Engine Room	16
Engine Room	16
Engine Room	16
Engine Room	17
Port	17
Starboard	17
Stern	17
<b>КОНТАКТЫ</b>	<b>18</b>
Контактная информация	18
Телефоны	18
Время работы	18
Адрес	18

---

# ХАРАКТЕРИСТИКИ

## Обзор

ALOHA has had very little use by its original owner, with only 550 hours on the upgraded 1100 CR MANS. ALOHA is just coming out of winter storage with a fresh coat of bottom paint and new zincs. She had her 500 hour service completed as well. ALOHA is as turn-key as you can get for a summer of cruising. ALOHA is ready to go!

## Основная информация

Тип судна: Моторная яхта

Модельный год: 2008

Год постройки: 2008

Страна: United States

Кубрик: Да

## Размеры

Длина общая: 58' 0" (17.68m)

Ширина: 15' 2" (4.62m)

## Скорость, вместимость и масса

Крейс. скорость: 31 Kts. (36 MPH)

Макс. скорость: 38 Kts. (44 MPH)

Вместимость воды: 104 Gallons

Объем топливного бака: 750 Gallons

## Размещение

Всего кают: 3

Всего ком. состава: 2

## Корпус и палуба

Материал корпуса: Fiberglass

## Информация о двигателе

---

**Двигатели:** 2

**Производитель:** MAN

**Модель:** D2848LE423

**Тип двигателя:** Inboard

**Тип топлива:** Diesel

---

# ПОДРОБНОЕ ОПИСАНИЕ

---

## Manufacturer Provided Description

---

The Princess V58 combines the comfort of a large sports yacht with the joys of open air cruising and thrilling speeds. Her abilities at sea are unmatched, combining characteristic V-class handling with safe and effortless control. The handling of the V58 remains accurate and responsive while superb hydrodynamics ensure a soft ride, class leading directional stability and exceptional seakeeping. Electronic engine controls and power assisted hydraulic steering ensure the cruising experience is relaxed and entertaining, while an open main deck layout and superb helm position ensure clear sight lines and optimum visibility.

## Salon

---

- Semi-circular sofa with dining table
- (2) Circular stools with purpose-made stowage
- Entertainment center
- LCD TV/DVD linked to Bose surround-sound system
- Cocktail cabinet
- Overhead downlighters and concealed lighting
- Main electrical control panel with freshwater gauge
- Deck hatch with blind
- Sliding door to cockpit

## Galley

---

- Combination microwave/conventional oven with grill
- Refrigerator
- Avonite (or similar) worktop
- 3-zone ceramic hob
- Stainless steel sink with monobloc mixer tap

- Storage cupboards, drawers, and lockers
- Garbage disposal and waste bin
- Teak decking in galley area

## Accommodations

---

- All cabins are fitted with opening portholes and 240v power points
- All heads feature electric quietflush toilets and 240v shaver points
- Upgraded custom decor
- Quilted bedspreads in the guest staterooms
- Televisions in both guest staterooms

## Electronics

---

- Depthsounder
- Television
- Plotter
- Furuno autopilot
- Compass
- Furuno GPS - 1944
- VHF
- Furuno Radar - 1944 64 NM
- Navigation center
- Upgraded Bose DVD player
- Radio
- CD player
- Cockpit Speakers

---

## Inside Equipment

---

- Electric bilge pump
- Manual bilge pump
- Marine head
- Heating
- Battery charger
- Air Conditioning

---

## Helm

---

- Double helm seat with sit/stand facility and sofa opposite
- Burr instrument panel with full engine instrumentation, fuel gauges, electronic engine, and gear shift controls
- Rudder position indicator
- Power-assisted hydraulic steering
- Bow thruster control
- Remote control electric anchor winch
- Trim tab controls with indicators autopilot
- VHF with DSC R/T
- NavNet 3D plotter, new in 2014
- Speed and distance log
- Echo sounder with alarm
- Remote control spotlight
- High-speed compass
- Horn button
- Chart table
- Twin windshield wipers



- Windscreen freshwater pressure wash
- Bilge pump controls with visual pump running indicators

## Engine Room

---

- 5-Bladed propellers in nickel aluminum bronze
- Engine room lighting
- Cockpit sole engine room access hatch with gas strut support
- Power-assisted hydraulic steering
- Power-assisted hydraulic steering
- Trim tabs with indicators
- Electronic engine controls
- Freshwater outlet point in engine room
- Extractor fans with electronic time-delay

## Engine Room/Mechanical & Electrical Equipment

---

- 1100 CR MANS with 550 hours
- 4 x heavy-duty (120AH) batteries for engine starting
- 4 x heavy-duty (120AH) auxiliary batteries
- Engine alternators charge via blocking diodes to isolate engine start batteries from auxiliaries
- 75-amp 24v float battery charger for auxiliary batteries, 5-amp
- 24v float battery charger for engine start batteries
- Remote battery master switches with control switch at main panel
- Circuit breakers on all circuits
- G220/240 Volt
- 7Kw diesel generator with own starting battery and specially silenced exhaust
- Generator/shore support change-over switch

- Shore support inlet in cockpit, all cabins, galley (double), and salon
- Polarity check system
- Earth leakage safety trip
- Shaver points in both heads

## Outside Deck

---

- Teak-laid transom platform and cockpit deck
- Reversible electric anchor winch with foredeck and helm position controls
- Self-stowing 25kg Delta anchor with 40m of chain
- Stemhead roller with automatic anchor launch and retrieve
- Bow rope storage locker
- Stainless steel bow, stern, and spring cleats (2 pairs)
- Stainless steel pulpit and guardrails
- Stainless steel coachroof handrails
- Hatches at fore-cabin and salon
- Stainless steel rubbing band with rubber insert
- Full set of IMCO navigation lights
- Riding light
- Remote control spotlight
- Twin electric horns
- Fuel and water fillers
- A/C for cockpit area
- Foredeck sunpads
- Self-draining
- U-shaped seating/dining area

- Cockpit lighting
- Cockpit hood and tonneau cover
- Cockpit wet bar including sink, with refrigerated cool box, barbecue and icemaker
- Dinghy stowage garage beneath sunbed, with hydraulic lift system
- Electric winch dinghy retrieval system
- Access hatch to lazarette stowage space with gas strut support
- Fender stowage
- Life raft storage
- Access hatch to engine room with gas strut support • Stowage lockers • Transom door leading to integral bathing platform with hot and cold transom shower, foldaway swimming ladder and teak decking • Stereo CD/radio

## Miscellaneous

---

- (6) Fenders and (4) whips
- Ensign staff
- First aid kit
- Boathook
- Owners manual and engine manual
- Tool kit
- Emergency tiller
- Emergency porthole cover
- Manual winch handle
- Ships document case
- Combination washer & dryer

## Additional Equipment

---

- Automatic/manual override fire extinguishers in engine room and generator space

- High-capacity manual bilge pump with valve system and suction points
- (4) Hand-operated fire extinguishers
- (5) Automatic electric bilge pumps (with manual override) in engine room, forward accommodation, aft lazarette
- (2) Glendinning cablemasters
- (2) Voltage stabilizers
- (2) Underwater lights

## Исключения

---

При продаже яхты исключаются личные вещи владельца.

## Отказ от ответственности

---

Компания предоставляет описание судна или яхты добросовестно, но не может гарантировать точность этой информации, а также не ручается за техническое состояние. Покупатель должен проинструктировать своих агентов или оценщиков исследовать представленную информацию более подробно, по собственному желанию. Продажа судна или яхты, изменение цены или снятие с продажи будет происходить без предварительного уведомления.

# ФОТОГРАФИИ

Helm



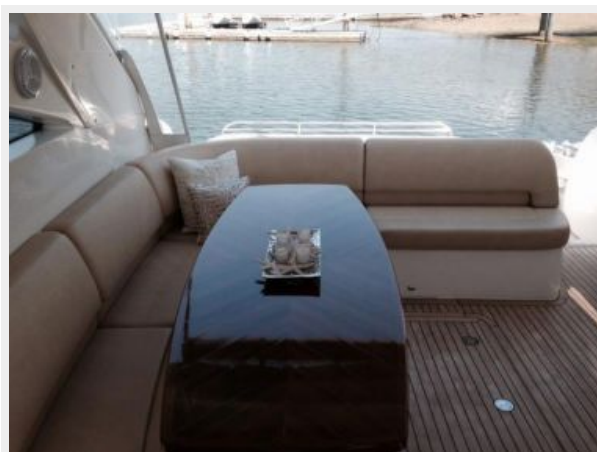
Helm



Dinette



Helm



Helm



Salon



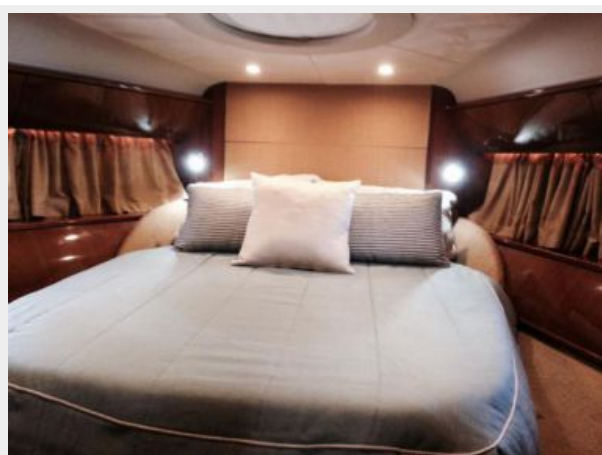
**Salon - Galley**



**Galley**



**Forward VIP Stateroom**



**Forward VIP Head**



**Master Stateroom**



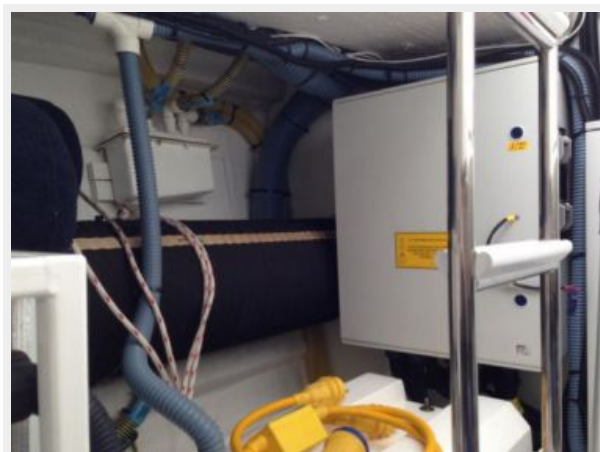
**Master Head**



**Twin Stateroom**



**Rudder/Generator Room**



**Rudder/Generator Room**



**Rudder/Generator Room**



**Rudder/Generator Room**



**Engine Room**



**Engine Room**



**Engine Room**





**Engine Room**



**Port**



**Starboard**



**Stern**



# КОНТАКТЫ

---

Андрей Шестаков (Andrey Shestakov) – ведущий яхтенный брокер отдела продаж яхт и судов компании Shestakov Yacht Sales Inc. Официальный представитель Shestakov Yacht Sales Inc. для русскоговорящих клиентов в центральном офисе компании в Майами/Форт Лодердейл/Флорида/США.

## Контактная информация

---

Email: [andrey@shestakovyachtsales.com](mailto:andrey@shestakovyachtsales.com)

Web: [shestakovyachtsales.com](http://shestakovyachtsales.com)

## Телефоны

---

Краснодарский край: **+7(918)465-66-44**

США, Майами, Флорида: **+1(954)274-4435**

## Время работы

---

Понедельник – Суббота: **9:00 - 21:00**  
EDT

Воскресенье: **Закрето**

## Адрес

---



Harbour Towne Marina, 850 NE 3rd St,  
STE 213, Dania, FL 33004