

SEA FOX — HATTERAS



Builder: HATTERAS

Year Built: 1986

Model: Motor Yacht

Price: PRICE ON APPLICATION

Location: United States

LOA: 63' 0" (19.20m)

Beam: 18' 2" (5.54m)

Max Draft: 4' 11" (1.50m)

Our experienced yacht broker, Andrey Shestakov, will help you choose and buy a yacht that best suits your needs **Sea Fox — HATTERAS** from our catalogue. Presently, at Shestakov Yacht Sales Inc., we have a wide variety of yachts available on our sale's list. We also work in close contact with all the big yacht manufacturers from all over the world.

If you would like to buy a yacht **Sea Fox — HATTERAS** or would like help answering any questions concerning purchasing, selling or chartering a yacht, please call **+1(954)274-4435**

TABLE OF CONTENTS

TABLE OF CONTENTS	2
SPECIFICATIONS	4
Overview	4
Basic Information	4
Dimensions	4
Speed, Capacities and Weight	4
Accommodations	4
Hull and Deck Information	5
Engine Information	5
DETAILED INFORMATION	6
Salon	6
Galley	6
Master Stateroom	6
Master Head	7
Companionway	7
Forward Stateroom	7
Guest Head Forward	7
Port Stateroom	7
Guest Head Port	8
Lower Helm	8
Flybridge	8
Lower Aft Deck	9
Hull & Deck Features	9
Forward Machinery Space	9
Cockpit	9
Engine Room	10
Exclusions	10
Disclaimer	10

PHOTOS	11
CONTACTS	19
Contact details	19
Telephones	19
Office hours	19
Address	19

SPECIFICATIONS

Overview

"Sea Fox" is a one owner 1986 Hatteras Cockpit Motor yacht, a true classic example of a very popular cruising vessel with a large interior volume space for it's size. Suitable for extended cruising or used as a live aboard, this vessel will not disappoint. Please call today for more information.

Basic Information

Category: Motor Yacht

Sub Category: Cockpit

Model Year: 1986

Year Built: 1986

Country: United States

Cockpit: Yes

Dimensions

LOA: 63' 0" (19.20m)

Beam: 18' 2" (5.54m)

Max Draft: 4' 11" (1.50m)

Speed, Capacities and Weight

Displacement: 79000 Pounds

Water Capacity: 375 Gallons

Holding Tank: 210 Gallons

Fuel Capacity: 1170 Gallons

Accommodations

Total Cabins: 3

Total Berths: 5

Sleeps: 6

Total Heads: 3

Hull and Deck Information

Hull Material: Fiberglass

Hull Color: White

Hull Designer: Hatteras

Engine Information

Engines: 2

Manufacturer: Detroit Diesel

Model: 12V71TI

Engine Type: Inboard

Fuel Type: Diesel

DETAILED INFORMATION

Salon

- Panasonic 42" Flat Screen TV
- Sony DVD Player
- Panasonic VCR
- Port side sofa
- Coffee table
- Sofa aft in salon
- Barrel chair seating on starboard side
- Overhead grab rail
- Two round end tables
- Bookshelf on port side aft
- Window shades

Galley

- Hotpoint refrigerator with freezer above
- Four burner GE electric stove top
- Panasonic microwave oven
- Stainless steel sink
- Badger 5 in sinkerator
- Modern Maid dishwasher
- Modern Maid Oven
- Nutone in - counter blender system
- Large dinette with seating for four
- Window blinds

Master Stateroom

- Magnavox 20" Flat screen TV
- Queen sized berth
- Twin night stands on each side of berth
- Seating area on starboard side of berth
- Storage drawers on port side
- Large his and hers closets
- Overhead lighting
- Dresser with drawers on starboard side

Master Head

- Galley Maid electric head
- Walk in shower with tub
- Vanity mirror and lighting
- Vanity storage
- Overhead lighting

Companionway

- Whirlpool Thin Twin washer/dryer
- Overhead grab rails
- Split engine room access
- Storage closet

Forward Stateroom

- Upper and lower berths
- Sharp 15" Flat screen TV
- Drawers on port side
- Hanging closet on starboard side

Guest Head Forward

- Galley Maid electric head
- Vanity mirror and lighting
- Overhead lighting
- Walk in shower
- Storage in vanity

Port Stateroom

- Twin berths lower side by side
- Sharp 15" Flat screen TV
- Large hanging closet
- Storage drawers under berths
- Nightstand with storage
- Overhead lighting
- Large mirror on starboard wall
- Overhead storage forward

Guest Head Port

- Galley Maid electric head
- Vanity mirror and lighting
- Vanity storage
- Overhead lighting
- Walk in shower

Lower Helm

- Raised leather helm seating
- Twin electrical distribution panels
- Chart drawers and storage drawers
- Hynautic engine controls
- Garmin 2010C Chart plotter
- Datamarine depth
- Datamarine Navigator
- Aqua Meter 660 speed log
- Icom VHF
- Simrad Autopilot AP21
- Danforth Compass

Flybridge

- Garmin 2010C Color Chartplotter
- Simrad AP21 Autopilot
- West Marine VHF660
- Raymarine C120 Chartplotter/Radar
- Naiad Roll Stabilizers (inoperative)
- Hynautic engine controls
- Spotlight Control
- Three sided eisenglas enclosure with U-Zips
- Standard Depth Display
- Three pedestal mounted vinyl cushioned helm seats
- Cushioned vinyl bench seating
- Covered Upper deck aft area with seating and storage
- Three dock boxes with cushions
- One large storage dock box
- Tracvision Satellite TV
- GE refrigerator
- Overhead lighting in radar arch

Lower Aft Deck

- Insignia 20" Flat screen TV
- Ice Maker
- Refrigerator
- Large wet bar with storage cabinets
- Overhead lighting
- Aft seating sofa
- Ladder access to flybridge

Hull & Deck Features

- Galley Maid windlass and stainless hause pipe
- One Danforth main anchor, One spare
- 5/8" 3 brain marine nylon rode
- Two large fiberglass deck boxes on foredeck
- One 20" by 20" deck hatch in forward deck
- Bow seating forward
- Twelve stainless steel cleats (through bolted)
- Exterior handrails (painted)
- Stainless steel rail system and cable lifelines
- Two Hubbel 240 volt 50 amp inlets each port and starboard
- One Hubbel 120 volt 50 amp inlet each port and starboard
- Two 50 amp shore cords
- Stainless fender holders on foredeck
- Bottom paint completed Nov 2014 with Interlux

Forward Machinery Space

- 20KW Phasor Diesel generator
- 14.4KW Norpro Diesel generator
- Five Cruiseair air conditioning units
- Racor fuel/water separators

Cockpit

- Large transom door
- Seating for four
- Swim platform with swim ladder
- Three rod holders
- Storage cabinet
- Access to rudder and steering systems

- Spot lighting
- Boarding ramp

Engine Room

- Twin Detroit Diesel 12V71TI engines (rebuilt 8 years ago)
- Hynautic throttle/gear control systems
- Two Fasco power bilge blowers
- Reverso lubrication transfer system
- Glendenning mechanical synchronizer system
- Racor remote mounted water separator filter systems
- ProMariner ProSports battery charger
- Guest Charge Pro 2610 Battery charger
- LeMarche Constavolt battery charger
- Newmar galvanic isolator
- 30 Gallon Ruud water heater
- Spare set of props
- 12v DC outlets

Exclusions

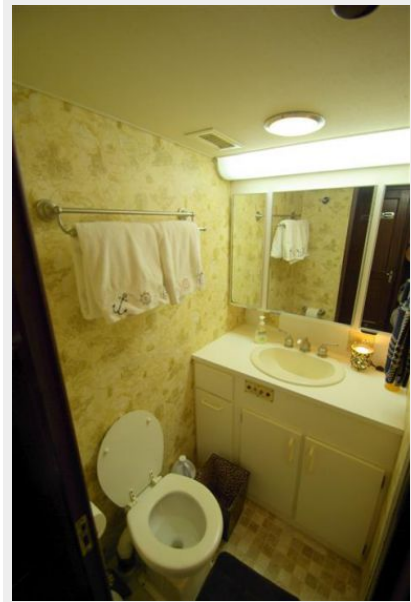
Owner's personal belongings.

Disclaimer

The Company offers the details of this vessel or yacht in good faith but cannot guarantee or warrant the accuracy of this information nor warrant the condition of the vessel. A buyer should instruct his representatives, agents, or his surveyors, to investigate such details as the buyer desires validated. This vessel or yacht is offered subject to prior sale, price change, or withdrawal without notice.

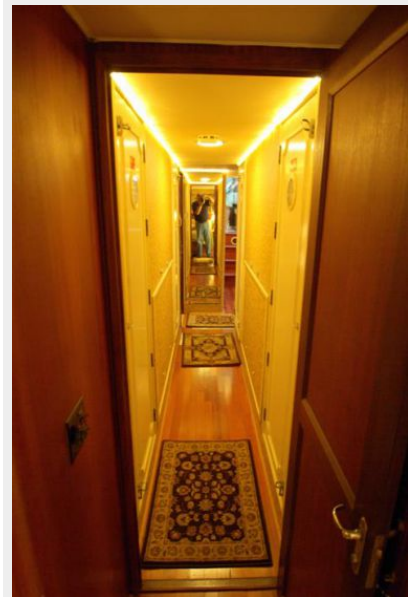
PHOTOS





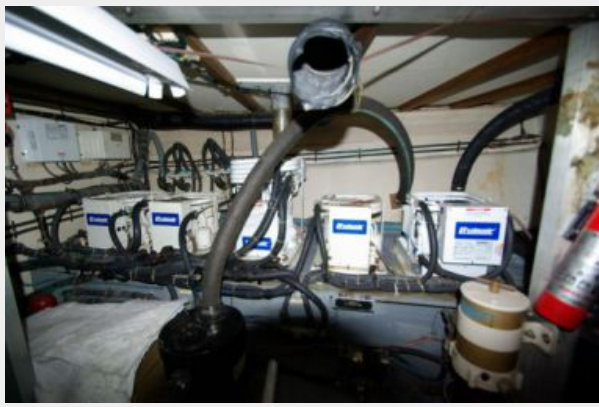












CONTACTS

Andrey Shestakov, leading yacht broker of the sales department of Shestakov Yacht Sales Inc. Shestakov Yacht Sales Inc., the official representative of the Miami/Fort Lauderdale FL headquarters.

Contact details

Email: andrey@shestakovyachtsales.com

Web: shestakovyachtsales.com/en/

Telephones

USA: +1(954)274-4435

Office hours

Monday – Saturday: **9:00 - 21:00** EDT

Sunday: **closed**

Address



Harbour Towne Marina, 850 NE 3rd St,
STE 213, Dania, FL 33004