

OL' SNIPE — MARINE TRADER



Судостроитель: MARINE TRADER

Год постройки: 1984

Модель: Крейсер

Цена: ЦЕНА ЯХТЫ ПО ЗАПРОСУ

Местонахождение: United States

Длина общая: 36' 0" (10.97m)

Ширина: 12' 2" (3.71m)

Макс. осадка: 3' 6" (1.07m)

Купить **Ol' Snipe — MARINE TRADER** а также выбрать подходящую вам яхту из нашего каталога яхт вам поможет опытный яхтенный брокер Андрей Шестаков. На сегодняшний день компания **Shestakov Yacht Sales Inc.** имеет большое количество яхт в собственном списке продаж, а также тесно сотрудничает со всеми крупными яхтенными производителями по всему миру.

Для того чтобы купить яхту **Ol' Snipe — MARINE TRADER** а также проконсультироваться по любому вопросу связанному с покупкой, продажей, чартером яхт позвоните по телефону **+7(918)465-66-44**.

ОГЛАВЛЕНИЕ

ОГЛАВЛЕНИЕ	2
ХАРАКТЕРИСТИКИ	3
Обзор	3
Основная информация	7
Размеры	8
Скорость, вместимость и масса	8
Размещение	8
Корпус и палуба	8
Информация о двигателе	8
ФОТОГРАФИИ	9
КОНТАКТЫ	23
Контактная информация	23
Телефоны	23
Время работы	23
Адрес	23

ХАРАКТЕРИСТИКИ

Обзор

No Disappointments. O' Snipe Has Been Completely Renovated!

Be sure to watch the custom walk through video.

Dimensions LOA: 36 ft 0 in Beam: 12 ft 2 in Maximum Draft: 3 ft 6 in Dry Weight: 21000 lbs

Engines Engine 1: Engine Brand: Ford Lehman Year Built: 1984 Engine Model: SP90 Engine Type: Inboard Engine/Fuel Type: Diesel Location: Port Propeller: 3 blade propeller Drive Type: Direct Drive Engine Power: 90 HP Engine 2: Engine Brand: Ford Lehman Year Built: 1984 Engine Model: SP90 Engine Type: Inboard Engine/Fuel Type: Diesel Location: Starboard Propeller: 3 blade propeller Drive Type: Direct Drive Engine Power: 90 HP **Tanks** Fresh Water Tanks: Aluminum (80 Gallons) Fuel Tanks: Aluminum (300 Gallons) Holding Tanks: Plastic (50 Gallons) **Accommodations** Number of double berths: 2 Number of cabins: 2 Number of heads: 2

Vessel Walkthrough

There are two entrances to the Marine Trader 36. There is a main entrance on the starboard side of the salon midship, and a private entrance to the master stateroom via the aft deck.

Entering from the main sliding teak door, you enter the main salon. The teak parquet floors are in great shape throughout the yacht. The main salon has a newer L-shaped Ultrasuede settee with folding cocktail table. Opposing the main settee in the starboard corner is a well-appointed galley with plenty of counter space and storage.

A sliding privacy door leads aft to the master stateroom with a pullman style double berth to starboard, and an office area to port. A private head with separate shower is incorporated into the master stateroom. There are separate AC controls and a ladder up and out of the private entryway to the aft deck.

Walking forward from the main salon through another sliding privacy door gains access to the guest stateroom forward. The guest stateroom features a large v-berth, and another head that has just recently been renovated. There is plenty of storage in hanging lockers and drawers, and separate AC controls.

The flying bridge is accessed via a custom stainless ladder from the aft deck. The flybridge is very spacious and wide open. There is room for several folding chairs and a table if desired. The helm offers an upholstered pedestal style seat, with bench seating to port. A large 10" Furuno multifunction display is front and center as is upgraded hydraulic steering.

Salon

- Teak parquet floors (great condition)
- Air conditioned

- All new glass in all windows
- Exterior Phifer tex sunshades (NEW 2015!)
- Opening forward windshield
- L-shaped settee with newer Ultrasuede upholstery
- Folding teak cocktail table
- Hide away liquor cabinet
- Sliding teak entryway to starboard
- 12V Overhead lighting

Galley

The comfortable galley shares its space with the main salon. There is plenty of counter space and storage.

- 120V refrigerator
- Microwave overhead in custom cabinet
- Deep Fiberglass sink with cover
- Single lever faucet
- Hot and cold pressurized water
- Electric Oven and Range

Staterooms

Aft Master:

The master stateroom features a large double berth with ladder leading up to the private entrance. There is also a decent sized head with separate shower, and a large desk/ office area to port.

- New windows with snap on shades
- Teak parquet floors (great condition)
- Privacy door to salon
- Private head and shower

Forward Guest:

The guest stateroom features a large v-berth with plenty of storage over and under. There is a beautiful teak butterfly hatch overhead. There is also a private head that has just recently been renovated.

- Carpeted floors
- New stainless steel opening ports
- Privacy door to salon
- Private head

Heads

Forward Guest Head:

- Recently renovated.
- Jabsco electric head
- Mirrored basin
- Hot and Cold pressurized water
- Dedicated 25 Gallon polyethene holding tank with macerator and deck pump out.

Aft Master Head:

- Separate shower stall/ tub with show curtain
- Stainless steel port light
- Jabsco electric head
- Mirrored wash basin
- Hot and cold pressurized water
- Dedicated 25 Gallon polyethene holding tank with macerator and deck pump out.

Hull and Deck

- Teak decks in excellent condition
- Custom heavy gauge stainless steel railing (NEW 2010-2011)
- Custom aluminum top/ sunshade installed (2010-2011)
- Hull was stripped and 16 coats of barrier coats applied (2011)
- All seacocks replaced (2010-2011)
- Entire hull painted with white Awlgrip (2011)
- Entire deck and superstructure painted in white Awlgrip (2011)
- Lofrans 12V windlass w/ Stainless steel 45lb CQR anchor
- Teak caprail, anchor platform and sampson post completely replaced (2010-2011)
- All exterior wood refinished 5/2015 (beautiful!)
- All new stainless steel opening ports (2010-2011)
- All new glass in all windows (2010-2011)
- All Stanchions rebedded (2015)
- Freshwater washdown pump for aft deck
- Saltwater washdown pump for aft deck (not installed)

Flying Bridge

The large flybridge is a wide open space with plenty of room for chairs and tables. The upper helm station has been completely modernized with a custom fiberglass helm station and all new electronics. All new hydraulic steering was also added during the renovation period.

- Hydraulic steering.(replaced old mechanical system)
- Large Multifunction display at helm

- Bench seating with newer vinyl
- Pedestal type helm chair with swivel (2012)
- Custom Stainless steel railing
- Custom Stainless steel ladder leading up from aft cabin
- Custom Aluminum and vinyl top (2011)

Electronics

All electronics were new in 2012-2014

- Furuno Navnet 10" multifunction display on flybridge
- Furuno 24NM radar for Navnet display
- Furuno fishfinder for Navnet display
- Standard Horizon VHF radio on flybridge
- Handheld VHF for lower helm
- Handheld GPS for lower helm
- Sony stereo with speakers on flybridge and remote
- 36" Vizio flatscreen television in salon
- Television antenna mounted on top

Mechanical and Electrical The renovation that took place between 2009 and 2014 included several major mechanical and electrical projects.

- Large engine room with plenty of room to work
- Twin Ford Lehman 90hp diesels (Approximately 2400 hours. Hour meters removed)
- New Exhaust system (2011)
- Phasor 7KW Generator (889 hours- NEW 2011!)
- Four new aluminum fuel tanks- total approx 300 gallons total. (NEW 2010!)
- **Two reverse cycle air conditioners. 12,000btu and 16,000btu** (NEW 2011!)
- Shafts repacked, and new cutlass bearings (2014)
- New sight glasses (2015)
- Three automatic bilge pumps (NEW 2013)
- High water alarm (NEW 2014)
- All new electrical A/C and D/C Panels (2011)
- Nearly all new 12V electrical system including batteries, panels, and conductors (2010-2011)
- Nearly all new 120V A/C electrical system. (2010-2011)
- Two 30A shorepower inlets
- Three 8D flooded batteries
- Racor Filters (NEW 2015)

Brokers Remarks

If you look closely at the full specs of this vessel you will be blown away. Almost every

piece of electrical, mechanical, plumbing, hull, deck, flybridge and electronics has been replaced or renewed. It is hard to completely grasp everything that has been done in the past 5 years, and I am sure I am missing many of the smaller details.

You simply must see this boat in person to completely appreciate it.

Well used and usually poor condition trunk cabin trawlers are very common in the marketplace. Finding one that is in fantastic condition can sometimes seem impossible. O' snipe has the classic great looks without the issues so many other classic trawlers have. All of the work has already been done for you.

This Marine Trader is simply gorgeous. Between 2007-2015 O' Snipe received an almost complete restoration by a professional craftsman and attentive owner. Almost every system has been upgraded. She is clean, well appointed and extensively upgraded.

She is ready to go today. Watch the walkthrough video and see for yourself. Act quickly, because trawlers that are in this condition usually won't last long.

The list of renovations is extensive, but you can see some highlights listed below.

- **Twin Ford Lehman 90HP diesels (Approx 2400 hours- CLEAN)**
- **7 KW Phasor Generator (NEW 2011!)**
- **Aluminum Fuel Tanks (NEW 2012!)**
- **Complete Awlgrip Paint From Waterline to Flying Bridge (2010-2011!)**
- **Custom Aluminum/ Vinyl Rigid Canopy (NEW 2012!)**
- **Custom Stainless Steel Railing (NEW 2012!)**
- **Hydraulic Steering (NEW 2010!)**
- **Stainless opening Ports (NEW 2011!)**
- **All Windows Replaced (NEW 2010!)**
- **All Exterior Teak Refinished (2015)**
- **Bottom Stripped and 16 Coats Of Barrier Coat Applied (2010!)**
- **Teak Decks in Great Condition**

Основная информация

Тип судна: Крейсер

Модельный год: 1984

Год постройки: 1984

Страна: United States

Размеры

Длина общая: 36' 0" (10.97m)

Ширина: 12' 2" (3.71m)

Макс. осадка: 3' 6" (1.07m)

Скорость, вместимость и масса

Водоизмещение: 21000 Pounds

Размещение

Всего кают: 2

Всего коек: 2

Всего ком. состава: 2

Корпус и палуба

Материал корпуса: Fiberglass

Информация о двигателе

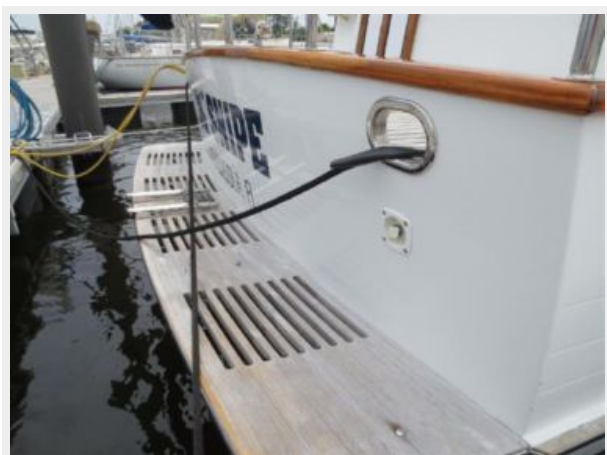
Производитель: Ford Lehman

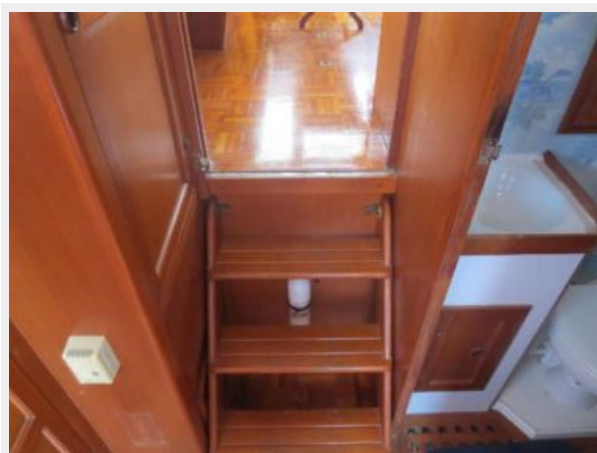
Модель: SP90

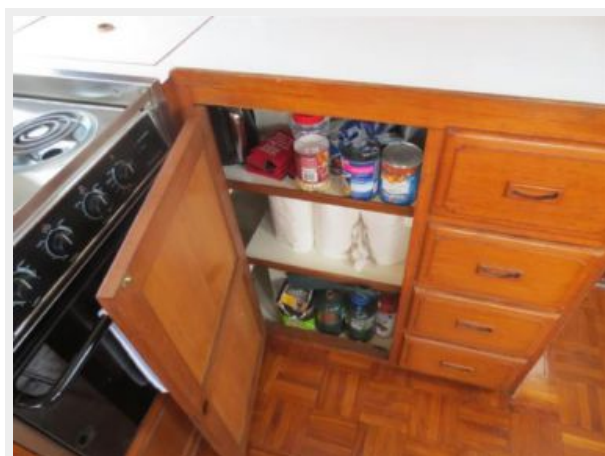
Тип двигателя: Inboard

Тип топлива: Diesel

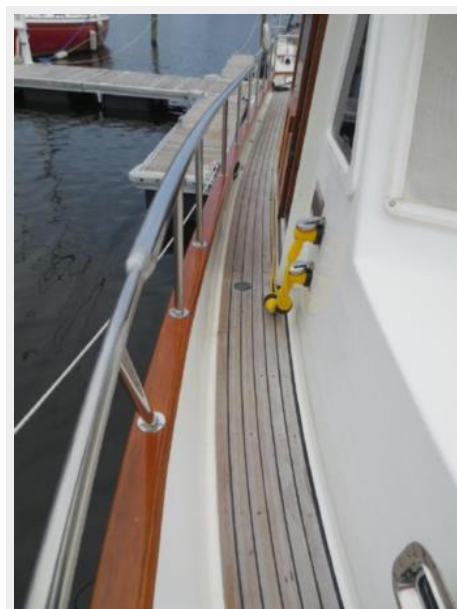
ФОТОГРАФИИ







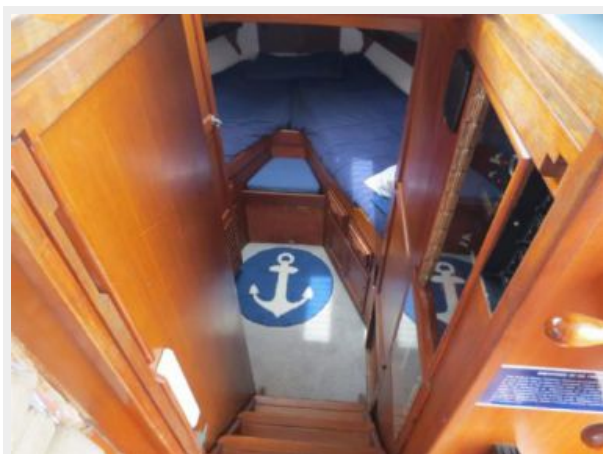


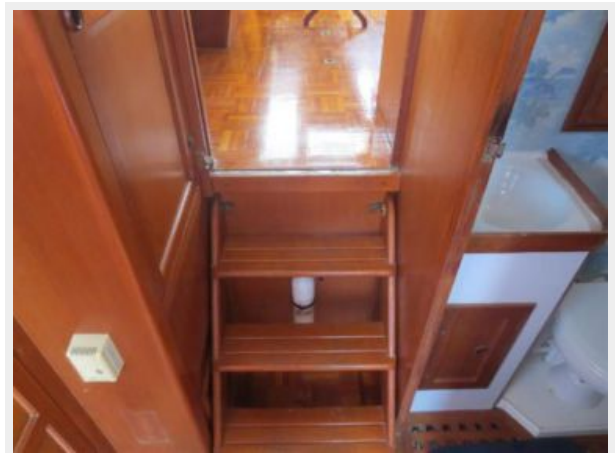






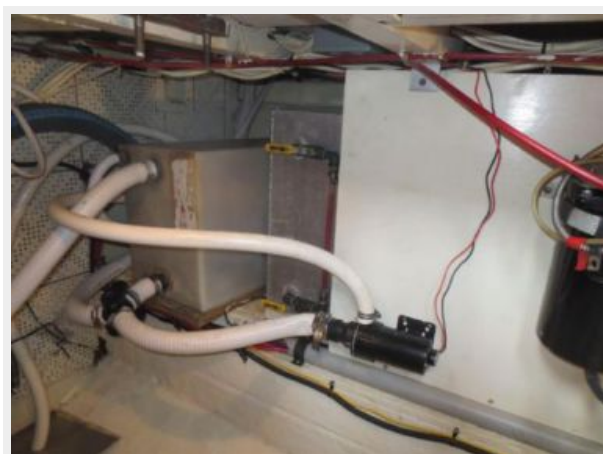
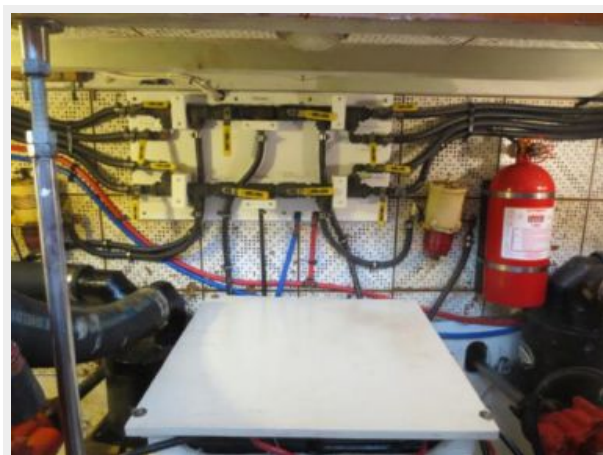














КОНТАКТЫ

Андрей Шестаков (Andrey Shestakov) – ведущий яхтенный брокер отдела продаж яхт и судов компании Shestakov Yacht Sales Inc. Официальный представитель Shestakov Yacht Sales Inc. для русскоговорящих клиентов в центральном офисе компании в Майами/Форт Лодердейл/Флорида/США.

Контактная информация

Email: andrey@shestakovyachtsales.com

Web: shestakovyachtsales.com

Телефоны

Краснодарский край: **+7(918)465-66-44**

США, Майами, Флорида: **+1(954)274-4435**

Время работы

Понедельник – Суббота: **9:00 - 21:00**
EDT

Воскресенье: **Закрито**

Адрес



Harbour Towne Marina, 850 NE 3rd St,
STE 213, Dania, FL 33004