

LIWAN — CHEOY LEE



Судостроитель: CHEOY LEE

Год постройки: 2006

Модель: Моторная яхта

Цена: **ЦЕНА ЯХТЫ ПО ЗАПРОСУ**

Местонахождение: United States

Длина общая: 84' 0" (25.60m)

Ширина: 21' 8" (6.60m)

Макс. осадка: 5' 8" (1.73m)

Крейс. скорость: 22 Kts. (25 MPH)

Макс. скорость: 26 Kts. (30 MPH)

Купить **LIWAN — CHEOY LEE** а также выбрать подходящую вам яхту из нашего каталога яхт вам поможет опытный яхтенный брокер Андрей Шестаков. На сегодняшний день компания **Shestakov Yacht Sales Inc.** имеет большое количество яхт в собственном списке продаж, а также тесно сотрудничает со всеми крупными яхтенными производителями по всему миру.

Для того чтобы купить яхту **LIWAN — CHEOY LEE** а также проконсультироваться по любому вопросу связанному с покупкой, продажей, чартером яхт позвоните по телефону **+7(918)465-66-44**.

ОГЛАВЛЕНИЕ

ОГЛАВЛЕНИЕ	2
ХАРАКТЕРИСТИКИ	6
Обзор	6
Основная информация	6
Размеры	6
Скорость, вместимость и масса	6
Размещение	6
Корпус и палуба	7
Информация о двигателе	7
ПОДРОБНОЕ ОПИСАНИЕ	8
84' Cheoy Lee Motor Yacht LIWAN	8
84' Cheoy Lee Motor Yacht LIWAN	8
Salon	8
Galley	8
Day Head	8
Master Stateroom & Head	9
Forward VIP	9
Forward VIP Head	9
Guest Stateroom	9
Guest Head	10
Twin Guest Staterooms (Port & Starboard)	10
Guest Head 2	10
Crew Cabin	10
Crew Head	10
Enclosed Bridge/Skylounge	11
Upper Aft Deck	11
Aft Deck	11
Deck	11

Engine Room	12
Electrical Equipment	13
Electronics	13
Swim Platform	14
Standard Equipment	14
Исключения	14
Отказ от ответственности	14
ФОТОГРАФИИ	16
KEPT UNDERCOVER	16
KEPT UNDERCOVER	16
KEPT UNDERCOVER	16
Foredeck	16
Starboard	17
Tender Davit	17
Swim Platform	17
Transom	17
Aft Deck	17
Aft Deck	17
Aft Deck	18
Aft Deck	18
Aft Deck	18
Aft Deck	18
Aft Deck	19
Upper Aft	19
Enclosed Bridge	19
Enclosed Bridge	19
Enclosed Bridge Seating	19
Enclosed Bridge Sink	19
Stairs	20

Stairs	20
Salon	20
Salon Seating	20
Salon Looking Aft	20
Bar	20
Dinette	21
Dining	21
Dining Buffet	21
Galley	21
Galley	21
Galley	21
Helm	22
Helm Controls	22
Helm Seats	22
Master	22
Master Desk	22
Master Bath	22
Master Bath	23
VIP	23
VIP Bath	23
Guest	23
Guest Bath	24
Guest	24
Double Bath	24
Double Guest	24
Crew Bath	25
Crew	25
Crew Mess	25
Crew Mess	25

Engine	26
Engine	26
Engine Looking Aft	26
GA Plans	26
КОНТАКТЫ	27
Контактная информация	27
Телефоны	27
Время работы	27
Адрес	27

ХАРАКТЕРИСТИКИ

Обзор

LIWAN is still owned and maintained by the original owner. LIWAN is in very nice condition and will survey very well. LIWAN is priced right and is ready for offers, she has very little hours on her, upgraded and maintained in excellent condition and must be seen to appreciate.

Основная информация

Тип судна: Моторная яхта

Модельный год: 2006

Год постройки: 2006

Страна: United States

Размеры

Длина общая: 84' 0" (25.60m)

Ширина: 21' 8" (6.60m)

Макс. осадка: 5' 8" (1.73m)

Скорость, вместимость и масса

Крейс. скорость: 22 Kts. (25 MPH)

Макс. скорость: 26 Kts. (30 MPH)

Вместимость воды: 650 Gallons

Объем топливного бака: 2800 Gallons

Размещение

Всего кают: 4

Всего коек: 5

Спальные места: 9

Всего ком. состава: 5

Каюты экипажа: 1

Койки экипажа: 2

Комм. состав экипажа: 1

Корпус и палуба

Материал корпуса: Fiberglass

Информация о двигателе

Двигатели: 2

Производитель: Caterpillar

Модель: C-30

Тип топлива: Diesel

ПОДРОБНОЕ ОПИСАНИЕ

84' Cheoy Lee Motor Yacht LIWAN

KEPT UNDERCOVER

84' Cheoy Lee Motor Yacht LIWAN

84' Cheoy Lee Motor Yacht LIWAN is still owned and maintained by the original owner. LIWAN is in very nice condition and will survey very well. LIWAN is priced right and is ready for offers, she has very little hours on her, upgraded and maintained in excellent condition and must be seen to appreciate.

Salon

· Rich Mahogany Paneling · Comfortable L shaped Sofa and cocktail table · Custom Mahogany round dining table with six chairs · Bar with U-LINE model 75 refrigerator/icemaker combo unit and liquor storage and wine cooler · Circular staircase up to flybridge and down to staterooms · Telephone jack · Smoke detector · Full height entertainment cabinet · Halogen ceiling lights with control/dimmer switches · Valance lights and floor lighting with control switches · Emergency lighting · Fixed adhesion style, tinted, tempered windows · 110vAC duplex outlets (5) in salon, one GFI type in head Stainless steel framed, tempered glass sliding door aft deck · LG 42" Flat screen TV · Marantz Dual Zone DTS Surround Receiver · JVC Progressive Scan DVD Player/4 Head HiFi VCR Marantz Five CD Changer · DirecTV DSS Satellite Receiver (For Music Choice) · Panamax Surge Suppressor · 5 Speakercraft 5" Premium CRS Round 2-way Flush Mount Speaker · Speakercraft 8" Powered Subwoofer · Infrared Repeating Kit to control hidden equipment

Galley

· Wolf stainless steel range top · Wolf stainless steel oven unit · GE Profile stainless steel microwave oven with ventilation hood · Subzero 36" stainless steel side-by-side refrigerator/freezer with ice dispenser · Bosch stainless steel dishwasher · Frankie stainless steel double sink · Kitchen Aid garbage disposal · Amtico flooring · Insta-Hot dispenser · Faucet with removable sprayer handle · Cabinets - upper and lower · Granite countertops · Smoke detector · Halogen overhead lights · Under cabinet lights · 110v AC outlets (4), GFI type · LG 15" HD ready LCDTV under cabinet mounting bracket · Panamax surge suppressor · 110v AC duplex outlets (2) · Weathertight fiberglass pantograph door to port side deck · Red night lights (2) and switch

Day Head

· Day head with HeadHunter · Vacu Flush head (fresh water flush) · Custom Designer faucets and bath accessories · Marble floor · Granite countertop with sink · Exhaust blower in head · Sliding pocket door

Master Stateroom & Head

· King berth, with storage drawers below · Stainless steel framed opening ports with screens and hold open arms over the berth soffit with indirect lighting on dimmer control · Two wood night stand with drawer and cabinet space · Telephone jack · Smoke detector · Small safe · Emergency escape through watertight door, from head to engine room spaces · Walk-in closet, cedar lined on back wall · Upholstered settee vanity unit with mirror · Handcrafted mattress · Storage cabinets · Halogen ceiling lights with control / dimmer switch · Valance lights and floor lights with control switches · Two reading lights · Full length mirror on closet door · LG 26" HD Ready LCD TV · Marantz DTS surround receiver · Marantz five disc progressive scan DVD / CD player · JVC 4 head HiFi stereo super VHS/VCR · Panamax surge suppress · 5 Speaker Craft 5" premium CRS Round 2-way flush mount speakers · Speaker Craft 8" powered subwoofer · Plasma proof infrared repeating kit to control hidden equipment · 110v AC duplex outlets (3) in stateroom · HeadHunter Vacu flush head (fresh water flush) · Separate toilet enclosure · Jacuzzi style tub with shower · Stall shower with frameless glass enclosure including hinged door · Faucets and bath accessories · Granite vanity countertop with his and her sinks · Marble floor · Exhaust blower · Two outlets GFI type

Forward VIP

· Queen berth with storage drawers underneath · Two wood night stands with drawer and cabinet storage · Vanity unit with mirror · Halogen ceiling lights with control switch · Valance and floor lights with control switch · Two reading lights · Smoke detector · Wardrobe cedar lined back wall with full length mirror on door · Summitt full size washer / dryer · Stainless steel framed ventilation / escape hatch with shade · LG 23" HD ready LCD TV · LG AM/FM/CD/DVD Combo · Panamax Surge suppressor · 2 Speaker Craft 5" premium CRS round 2-way flush mount speaker · 110v AC duplex outlet (1) in stateroom

Forward VIP Head

· HeadHunter Vacu flush head (fresh water flush) · Telephone jack · Stall shower · Faucets and bath accessories · Granite countertop with sink · Marble floor · Exhaust blower · 110v AC duplex outlet (1) GFI type in head · SHOJI screens

Guest Stateroom

· Full size berth with storage underneath · Two wood night stands with drawer and cabinet

storage · Telephone jack · Smoke detector · Wardrobe, cedar lined on wall surface with full length mirror on door · Halogen ceiling lights with dimmer switch · Valance and floor lights with control switch · Two reading lights · Stainless steel framed opening port with screen · LG 23" HD ready LCD TV · LG AM/FM/CD/DVD combo · Panamax surge suppressor · 2 Speaker Craft 5" premium CRS round · 2-Way Flush mount speaker · 110v AC duplex outlets (2) in stateroom

Guest Head

· Stainless steel framed opening port with screen and hold open arm · Stall shower · Faucet and bath accessories · Granite countertop with sink · Exhaust blower · HeadHunter Vaccu-flush head (fresh water flush) · 110v AC duplex outlets, one GFI type in head

Twin Guest Staterooms (Port & Starboard)

· Twin size berths with storage drawers underneath and Pullman berth · Telephone jack · Smoke detector · Wardrobe, cedar lined on back wall with full length mirror on door · Halogen ceiling lights with dimmer switch · Valance and floor lights with control switch · Two reading lights · Stainless steel framed opening port with screen and hold open arm
Port Guest Stateroom: · LG 23" HD ready LCD TV · LG AM/FM/CD/DVD combo · Panamax surge suppressor · 2 Speaker Craft 5" premium CRS round 2-way flush mount speaker · 110v AC duplex outlets (2) in stateroom
Starboard Guest Stateroom: · LG 15" HD ready LCD TV · LG AM/FM/CD/DVD combo · Panamax surge suppressor · 2 Speaker Craft 5" premium CRS round 2-way flush mount speaker · 110v AC duplex outlets (2) in stateroom

Guest Head 2

· Stainless steel framed opening port with screen and hold open arm · Stall shower · Faucets and bath accessories · Granite countertop with sink · Exhaust blower · HeadHunter Vacu Flush head (9 fresh water flush) · 110v AC duplex outlets, one GFI type in head

Crew Cabin

· Upper and lower berths · Smoke detector · Wardrobe cedar lined on back wall · Halogen ceiling lights with control switch · Two reading lights · Desk with two shelves above · Telephone jack · Amtico flooring · 110v AC duplex outlet (1) in stateroom · LG 15" HD ready LCD TV · Panamax surge suppressor · 2 Speaker Craft 5" premium CRS round 2-way flush mount speaker · Refrigerator / Freezer

Crew Head

· 110v AC duplex outlet, one GFI type in head · Galley Maid electric head (fresh water flush) ·

Stall shower · Corian countertop with sink · Faucet and bath accessories · Exhaust blower

Enclosed Bridge/Skylounge

· Mather single lever electronic engine controls · Teleflex / Hynautic hydraulic power steering · Engine instrumentation and alarms · Large electronics console wrapped in Magilite and faced in Sapeller Pompelle · Stainless steel steering wheel · Helm seat for two, wood bench seat with storage in arm rests · Portside Crown hair · ACR 100 quartz halogen search light, remote dual station control · Telephone jack · Twin trumpet air horn · Remote control for anchor windlass · Windshield wipers with fresh water wash system · Mahogany wet bar w/42" LG Pop up TV · L shaped sofa with mahogany coffee table with Sapelle Pompelle inlay · Panamax surge suppressor · 2 Poly-Planar high-powered 6" Weatherized flush-mount marine speakers · Flybridge monitor audio · Override through water pad · Programmable logic control panel (see Electrical Systems) · Smart Pad in wall · Source Select/Function · Control keypad

Upper Aft Deck

· L shaped aft looking settee with Sunbrella cushions and storage below · Scuppers and drainage system for water to lower deck · Lighting arrester system · Hatch and molded steps to aft deck, with stainless steel rails and gage · Painted fiberglass locker with Avonite bar top · Sink with cold water wash down · Hose Bib · Refrigerator/ freezer unit · Double Jennaire electric barbecue grill · 100vAC outlets (3), GFI type · Nautical structures hydraulic davit 1,700 lb. capacity, with power rotation · 16' Inflatable 250 HP tender with Yamaha outboard engine · Flush mounted lighting · 8 Man life raft

Aft Deck

· Molded fiberglass steps to flybridge · Port and Starboard wing control stations for gear, throttle, and thrusters · Trash compactor · Fiberglass U-Shaped seat with cushions · Painted fiberglass pedestal mounted table · Forward facing settee with Sunbrella cushions and storage below · Teak folding chairs (3) · Painted fiberglass stwet bar with Avnoite countertop and fridge combo · Stairs to swim platform · 8 step Tracy folding stairs with port and starboard mounting brackets · LG 15" HD ready LCD TV · Flat Mounting Bracket · Component Video Feed from Main Salon · Panamax Surge Suppressor · 2 Poly-Planar High-powered 6" weatherized flush mount marine speaker · Speakercraft weatherproof volume control

Deck

· All hardware chrome on brass, 316 stainless steel or anodized/painted aluminum · Two vertical anchor windlass, MAXWELL VWC 4000 3/8" chain cathead and rope capstan, deck pipe and chain stopper. Local controls with remote at helm station · 176 lb BRUCE anchor stowed on roller

assembly on bow · 250 ft of 3/8" high test galvanized chain · Walkway lighting on side deck overhangs · Step lights for molded stairs · Fresh water anchor wash down · Twin trumpet air horn · Stainless steel bollards (8) · Stainless steel fairleads · Stainless steel rails (1.25") with mid rail forward · Stainless steel burgee flag staff on bow rail · Navigation lights · Flag staff · Boarding gates port and starboard · Step plates located at deck entrances · Scuppers draining to boot top · Painted aluminum foredeck hatch for chain locker access · Aft Bollards reinforced for towing

Engine Room

· Twin Caterpillar C-30 (1,550 HP each) diesel engines with 789 Hours, fresh water cooled, electronic injection/governor, Twin Disc reduction gearboxes with trolling valves, 24vDC starting. · Dual Hydraulic PTO pumps off PTO on Genset, bow thrusters · American 24P stern thruster · Local mounted start/stop instrument panels for main engines and generators · Under water exhausts, with bypass and fiberglass mufflers · Twin Northern Lights generators, 33 kW with hydrolastic mounts (both with sound enclosure) 12vDC starting. Port Generator hours 1,185, Starboard Generator hours 1,774. · 220vAC reverse cycle chilled water air conditioning (except engine room) · Centek combo generator mufflers, air/water separator type, with hull side exhaust · Engineered engine room ventilating system, with intake blowers taking air in via air/water separator filters on hull side. · Fire protection consisting of manually and automatically actuated CO2 fire extinguisher system. Upon system actuation audio/visual alarms sound, blowers are shut down and hull side ventilation dampers are closed. · Naiad Datum 3 option stabilizer system with 12 sq. ft. fins and Datum station controls. · Hydraulic power from twin hydraulic pumps run off main engine gear boxes · Power hydraulic steering system, including valves for optional autopilot installation · Engine driven emergency bilge pumping system for engine room bilges · Lube oil change system with pump, manifold and hoses to all engines and gearboxes · Racor fuel filters with vacuum gages for the main engines, manifold to allow filter change underway · Racor filters with vacuum gages for generators · Two 30 gallon water heaters, dual element, quick recovery type · Headhunter AC and DC water pump and accumulator tank for fresh water pressure system · Cartridge style whole system water filter unit · Sink with fresh water hose bib · Automatic sump pumps · Automatic bilge pumps, for each separate compartment in the vessel · Fuel management system, consisting of fuel shut-off valves, fuel transfer pump with meter system and selector manifold · Hart Tank Tender gauges for fuel, fresh water, black water and grey water tanks, pneumatic pump type · Black water tank level indicator and high level alarm · Black water holding tank with Y-valve selector to allow direct discharge overboard or into holding tank. Macerator pump for pump out of holding tank direct over board, or to vented deck fitting for shore side disposal. · Groco bronze raw water strainers, all engines and sea water pump intakes · Seacocks on all through hull fittings below the waterline · Fiberglass battery boxes · Battery condition indicator · Engineered sound vibration and noise attenuation system for engine room spaces consisting of lead tile sound barriers and mylar faced synthetic lead-foam insulation covered with white painted aluminum perforated sheeting. · Custom sound mounts for main engines, generators, engine room stanchions, head pumps/motors, air conditioning compressors and sea water cooling pumps · Drip trays under engines · Spurs (rope cutters) · Seashaft 22 or equal propeller shafts · Stainless steel rudder blades · Nibral propeller shaft struts · Nibral propellers, 5

blade, class S, dynamically balanced · Duramax cutlass rubber stern and rudder bearings · PYI packless shaft seals · 110vAC explosion proof fluorescent lights · Automatic 24vDC explosion proof fluorescent lights (4) · Smoke detectors · Telephone jack · 110vAC outlets (2), GFI type · Watertight entrance door from aft swim step to crew area · Watertight emergency escape hatch from engine room to master stateroom · R.O. of South Florida 1400 qpd and 800 qpd back-up watermakers with digital stop and start in galley · Zero spot water filtration · Fishing rod rack (2) on Engine room overhead · Work bench with vise · Quick connect fitting on transom with ball valve to fuel transfer pump for diesel refueling of tender

Electrical Equipment

· 220/110vAC, 60 cycle and 24/12vDC electrical panels, main panels in engine room and sub-panels throughout vessel · ACR 100 searchlight with station remote control · Halogen overhead light fixtures · Valance lights and floor rope lighting to be 24vDC · Automatic wardrode lights · Emergency lights, 24vDC, automatic at loss of AC power, to incorporate floor and stairway lights and selected overhead lighting. Removable emergency flashlights in each stateroom · 24vAC reading lights · Two 24vDC 210 amp-hour battery banks for engine starting and ship service · Battery parallel system at both helm stations · 24vDC, 50 amp OutBack Inverter/Charger · Two 12vDC 175 amp-hour battery banks for generator starting · 12vDC 20 amp battery charger · 50 amp Vanner 12vDC equalizer with 12vDC 120 amp-hour battery and 12 spare 24/12vDC circuit breakers in subpanel for electronics use · Glendinning Cablemaster shore power cable retrieval system, for 230vAC 100 amp service, with 100 ft. cable · Shore telephone inlet, with 100 ft. cable · Copper bonding system, connecting all through hull fittings and major metal components to exterior hull zinc anodes · Isolation transformer (25 kVA), for shore power system · Dynaplate grounding plate and strap to pilothouse and flybridge ground terminal boards · Voltmeters and ammeters for supply circuits · Generating set/shore power selector switches and shore power polarity indicator · LCD touch screen control/alarm monitoring system with audible and visual signals displayed on · Programmable Logic Controller (PLC) located in pilothouse for generator low oil pressure, generator high temperature, high bilge level, and smoke detectors (engine room, staterooms, galley, salon). · Security alarm sensors on all doors and hatches. Navigation light control and monitoring. · 4 Deep Sea under water lights with 1 Seacam underwater camera

Electronics

· VHF Standard Horizon Quantam VHF (enclosed flybridge) · Newmar Waterproof Marine Hailer Horn, 40 watt max (Forward Top) · VHF Standard Horizon Matrix VHF (Galley) · Panasonic KX-T7730 LCD Speakerphone (Master Stateroom, Enclosed Flybridge, Salon, VIP, Port, starboard and Crew) · Panasonic 2.4GHz Cordless Telephone with Cradle (Galley) · Navnet radar/plotter/sounder system · Furuno 1954CBB New Model NavNet Black Box Radar/Chart Plotter w/6' 12kW (Enclosed Flybridge) · Transmitter, NT w/chart/radar overlay 72NM Black Box Processor with Helm Station Control Console · (Helm Station) · 6 foot Open Array Antenna, 12kW Transmitter · 15" Color LCD Daylight Flush-Mount Monitor, Infinity (Enclosed Flybridge) · Furuno 1934CBB New Model NavNet Black Box Radar/Chart Plotter with 3.5' Array, NT (Enclosed

Flybridge) · 3x Nauticomp 15" Color LCD Daylight Flush-Mount Monitor (Enclosed Flybridge) · Autopilot Simrad AP25 consisting of Waterproof control (Enclosed Flybridge) · Instrumentation - Remote Display - Furuno RD30 Remote (Enclosed Flybridge) · Satellite TV System - p/n 120653-4-SeaTel 2498S Maritime Satellite TV Antenna System · CCTV camera system - fed to all TVs · Channel Vision Four Camera Selector (Enclosed Flybridge) · Infra-red Waterproof Deck Mount Ocean System Camera (Forward Hardtop) · Fixed Color Dome Camera 12VAC, 2.9mm Lens (Engine Room) · Furuno NX500 Navtex Receiver and Printer(IMO) (Pilothouse) · Globalstar Satellite Phone Hand-Held · Nobeltec Software - Visual Navigation Suite 7.0 Florida, Bahamas, & Puerto Rico Chart Kits · Sona system - Interphase Color Twin scope, Wide Color Dual Axis 90 Degree Scanning Sonar -1 thru-hull · Transducer 90 deg (Helm)

Swim Platform

· Teak decking · Stainless steel swim ladder · Stainless steel U-shaped rails · Fresh water shower, hot and cold · Salt water wash down bib · Watertight door to crew quarters · Locker for shore services, shore power, TV and telephone inlets · Hinged cleats port and starboard (not for towing) · Step lights from sport deck to aft deck · Exterior storage locker with water tight door · 12 VDC outlet for electric fishing reel or crab pot puller

Standard Equipment

· Hull, deck and superstructure of Divinycell or equivalent cored fiberglass · Extensive use of bi-axial and multi-axial E-glass reinforcement · Integral fiberglass fuel, fresh water and holding tanks, with baffles and cleaning manholes · Fiberglass rub rail with stainless steel capping · Tinted (except pilothouse), tempered glass windows, utilizing high strength, adhesion style window system · Awlcraft 2000 exterior finish (Off White with Black trim) · Awlgrip non-skid exterior decks · Vinylester laminate and epoxy barrier on hull bottom with 5 year anti-osmosis warranty · Two coats of antifoul bottom paint · Speakercraft 50 Watt Power Amplifier (Flybridge) · AVA Compression Fit Interconnect Package · Miscellaneous Parts, Connectors, Supplies

Исключения

При продаже яхты исключаются личные вещи владельца.

Отказ от ответственности

Компания предоставляет описание судна или яхты добросовестно, но не может гарантировать точность этой информации, а также не ручается за техническое состояние. Покупатель должен проинструктировать своих агентов или оценщиков исследовать представленную информацию более подробно, по собственному желанию. Продажа судна или яхты, изменение цены или снятие с продажи будет происходить без

предварительного уведомления.

ФОТОГРАФИИ

KEPT UNDERCOVER



KEPT UNDERCOVER



KEPT UNDERCOVER



Foredeck



Starboard



Tender Davit



Swim Platform



Transom



Aft Deck



Aft Deck



Aft Deck



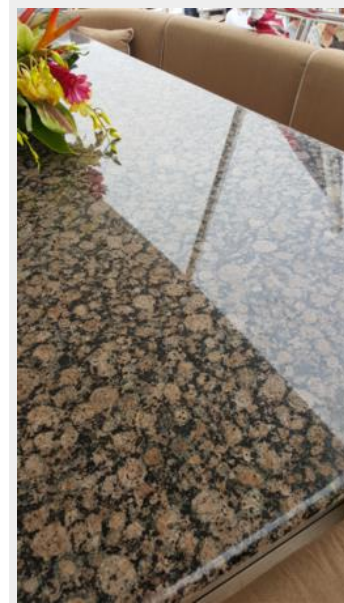
Aft Deck



Aft Deck



Aft Deck



Aft Deck



Upper Aft



Enclosed Bridge



Enclosed Bridge



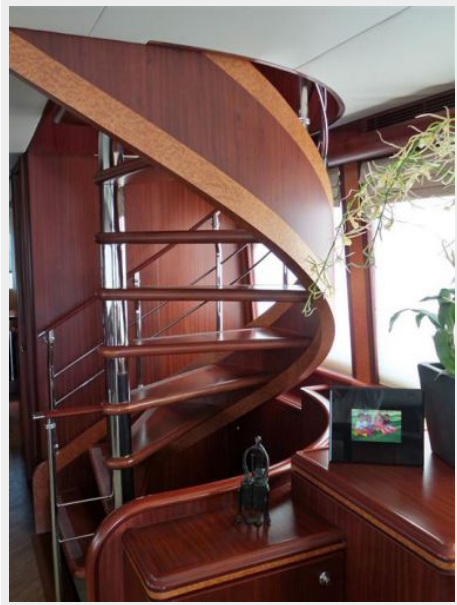
Enclosed Bridge Seating



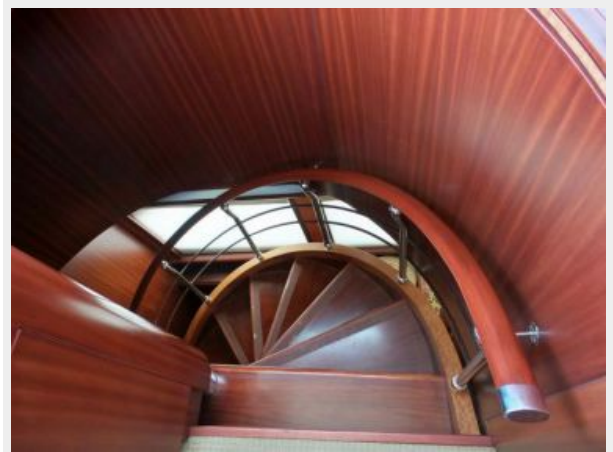
Enclosed Bridge Sink



Stairs



Stairs



Salon



Salon Seating



Salon Looking Aft



Bar



Dinette



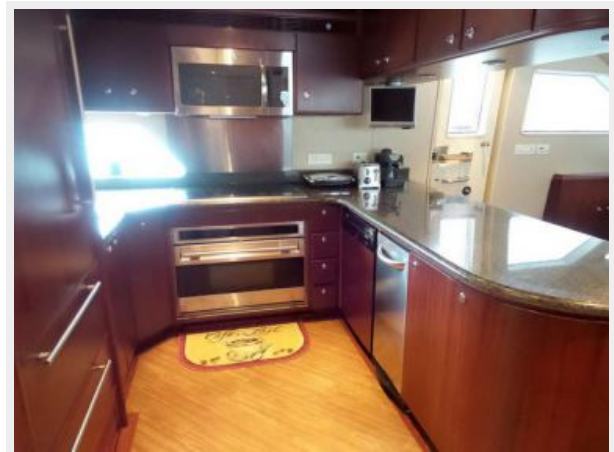
Dining



Dining Buffet



Galley



Galley



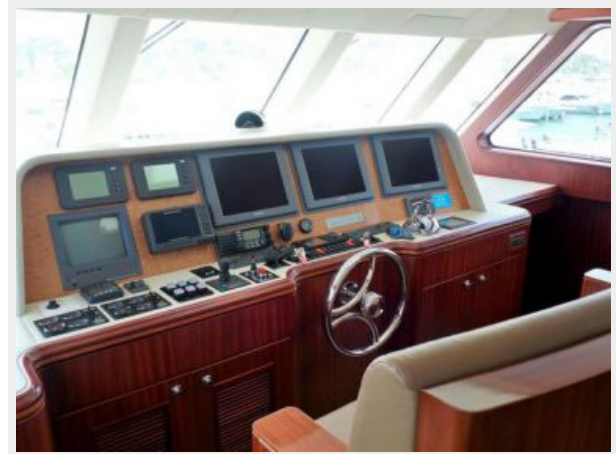
Galley



Helm



Helm Controls



Helm Seats



Master



Master Desk



Master Bath



Master Bath



VIP



VIP Bath



Guest



Guest



Guest Bath



Double Guest



Double Bath



Crew



Crew Bath



Crew Mess



Crew Mess



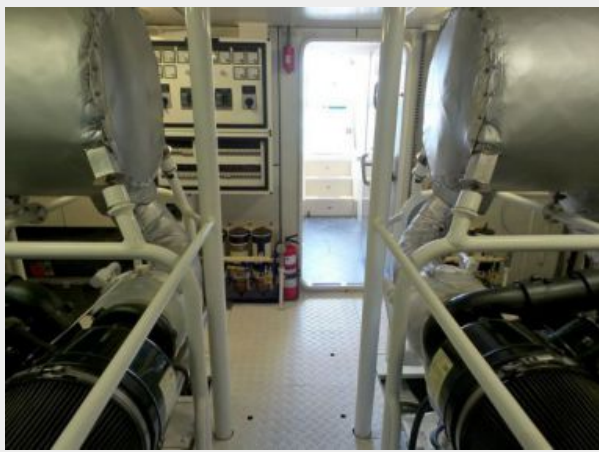
Engine



Engine



Engine Looking Aft



GA Plans



КОНТАКТЫ

Андрей Шестаков (Andrey Shestakov) – ведущий яхтенный брокер отдела продаж яхт и судов компании Shestakov Yacht Sales Inc. Официальный представитель Shestakov Yacht Sales Inc. для русскоговорящих клиентов в центральном офисе компании в Майами/Форт Лодердейл/Флорида/США.

Контактная информация

Email: andrey@shestakovyachtsales.com

Web: shestakovyachtsales.com

Телефоны

Краснодарский край: **+7(918)465-66-44**

США, Майами, Флорида: **+1(954)274-4435**

Время работы

Понедельник – Суббота: **9:00 - 21:00**
EDT

Воскресенье: **Закрыто**

Адрес



Harbour Towne Marina, 850 NE 3rd St,
STE 213, Dania, FL 33004