

LADY MARTHA — GRAND BANKS



Судостроитель: GRAND BANKS

Год постройки: 1996

Модель: Моторная яхта

Цена: **ЦЕНА ЯХТЫ ПО ЗАПРОСУ**

Местонахождение: United States

Длина общая: 46' 0" (14.02m)

Ширина: 14' 9" (4.50m)

Макс. осадка: 4' 6" (1.37m)

Купить **LADY MARTHA — GRAND BANKS** а также выбрать подходящую вам яхту из нашего каталога яхт вам поможет опытный яхтенный брокер Андрей Шестаков. На сегодняшний день компания **Shestakov Yacht Sales Inc.** имеет большое количество яхт в собственном списке продаж, а также тесно сотрудничает со всеми крупными яхтенными производителями по всему миру.

Для того чтобы купить яхту **LADY MARTHA — GRAND BANKS** а также проконсультироваться по любому вопросу связанному с покупкой, продажей, чартером яхт позвоните по телефону **+7(918)465-66-44**.

ОГЛАВЛЕНИЕ

ОГЛАВЛЕНИЕ	2
ХАРАКТЕРИСТИКИ	5
Обзор	5
Основная информация	5
Размеры	5
Скорость, вместимость и масса	5
Размещение	6
Корпус и палуба	6
Информация о двигателе	6
ПОДРОБНОЕ ОПИСАНИЕ	7
Walkthrough	7
Exterior Equipment	7
Aft Deck/Cockpit	7
Interior Throughout	8
Salon	8
Galley	8
Lower Helm	8
Electronics	8
Master Stateroom	9
Guest Stateroom	9
Guest/Day Head	9
Flybridge	9
Engine Room/Mechanical Equipment	9
Electrical Equipment	10
Remarks	10
Exclusions	10
Исключения	10
Отказ от ответственности	11

ФОТОГРАФИИ	12
Stern	12
Aft Deck	12
Aft Deck	12
Lazarette	12
Sidedeck Starboard	13
Foredeck	13
Bow	13
Foredeck	13
Foredeck	14
Flybridge	14
Flybridge	14
Flybridge	14
Flybridge	14
Flybridge	14
Flybridge	14
Flybridge	15
Flybridge	15
Flybridge	15
Flybridge	15
Salon	15
Salon	15
Salon	16
Salon	16
Salon	16
Salon	16
Galley	16
Galley	16
Galley	17
Lower Helm	17

Master Stateroom	17
Lower Helm	17
Master Stateroom	18
Master Stateroom	18
Master Stateroom	18
Master Stateroom	18
Master Head	19
Master Head	19
Guest Stateroom	19
Guest Stateroom	19
Guest Stateroom	20
Guest Head	20
Guest Head	20
Engine Room	20
Engine Room	21
Engine Room	21
Engine Room	21
Engine Room	21
Engine Room	21
Engine Room	21
Utility Room	21
Utility Room	22
Stern View	22
Profile	22
КОНТАКТЫ	23
Контактная информация	23
Телефоны	23
Время работы	23
Адрес	23

ХАРАКТЕРИСТИКИ

Обзор

LADY MARTHA has the preferred 2 stateroom/2 head layout, large covered aft deck at the salon level, spacious flybridge deck featuring 2012 new Bimini top, 2012 new custom seat cushions with increased thickness for more comfort and easy sight lines to her bow, 2012 new flybridge cushion covers and privacy dodgers, 2012 new 600-lb UMT custom dinghy davit for easy dinghy launching, 2012 Walker Bay center console dinghy with 20hp Honda 4 stroke, 2014 Garmin touch screen GPS/Radar installed in 2014, custom electronics locker, and 2014 Garmin autopilot.

On the main deck she features 2014 KVH M3 SAT TV, 2014 flatpanel TV in salon, fresh 2012 interior décor, 2014 Garmin touch screen GPS/Radar, 2014 Garmin autopilot, 6/2015 freshly serviced low hour Caterpillars, extremely clean engine room and so much more!

LADY MARTHA has been maintained to the highest degree by her knowledgeable owners and Captain. She is the finest Grand Banks 46 Europa on the market and will not last long.

Основная информация

Тип судна: Моторная яхта

Модельный год: 1996

Год постройки: 1996

Страна: United States

Размеры

Длина общая: 46' 0" (14.02m)

Ширина: 14' 9" (4.50m)

Макс. осадка: 4' 6" (1.37m)

Скорость, вместимость и масса

Вместимость воды: 270 Gallons

Объем топливного бака: 600 Gallons

Размещение

Всего кают: 2

Всего ком. состава: 2

Корпус и палуба

Материал корпуса: Fiberglass

Информация о двигателе

Двигатели: 2

Производитель: Caterpillar

Модель: 3126

Тип двигателя: Inboard

Тип топлива: Diesel

ПОДРОБНОЕ ОПИСАНИЕ

Walkthrough

Step onto this GB46EU via the large covered aft deck featuring lazarette aft and engine/machinery room just forward. Plentiful room for table, chairs and more. Enter the salon through the double sliding aft doors. There is a very large L-settee to port with teak hi-lo yacht table and to starboard, a very comfortable straight settee with entertainment center in teak cabinet aft with flatscreen TV on top. Moving forward to port is the U-shaped galley featuring Grunert holding plate refrigeration/freezer, sink & faucet, 3-burner Princess cooktop/oven, Microwave, trash bin, and numerous drawers and cabinets for storage. Looking forward, there is are three (3) large separate storage spaces for dishware, flatware, etc. inside the countertop. To starboard is the lower helm station featuring side access boarding door to the wide sidedeck, built-in Grand Banks double seat with freezer below at the helm and full instrumentation, including 2014 Garmin electronics. Heading below, the guest stateroom is to port featuring two single berths, one fore and aft, with hanging locker between and drawer storage below. Across the companionway is the guest/day head with separate stall shower. This head is very spacious with lots of storage and a Combomatic washer/dryer outboard of the shower. Moving forward is the master stateroom featuring island queen berth, a large hanging locker space, numerous drawers, lockers and cabinets; natural light is provided by a hatch in the center; there is a large amount of floor space so very spacious overall. There is a private en suite head and separate stall shower for the Master.

Exterior Equipment

Air horn Anchor chain locker, divided for rope & chain Anchor platform, fiberglass, w/pulpit Anchor windlass locker, fiberglass Chocks & Cleats, stainless steel Courtesy lights Deck fillers, diesel fuel & water, stainless steel Teak decking Engine room vents Fresh water outlet, forward Flagstaff holders, bow & stern Grab rails, stainless steel Teak name boards Teak navigation light boards Mast and boom, hinged, aluminum Rail gates, port & stbd Teak safety rails on main deck Teak staffs, bow & stern Teak boarding steps on transom GB step plates at rail openings Stanchions, stainless steel Vents for fuel & water tanks Waste pump-out deck fittings, chrome Windlass, horizontal, rope/chain, 3-station, 12V

Aft Deck/Cockpit

Teak decking Hatch to lazarette area, pneumatic cylinder assisted w/ladder Hatch to machinery room and engine room access Ladder to flybridge, stainless steel rails & teak steps Rail gate Sliding hatch, teak frame Teak swim platform, extended Transom hot/cold shower w/retractable hose Teak transom

Interior Throughout

Teak and Formica bulkheads Teak parquet cabin sole Curtains, lined Grab rails Teak gratings in lazarette & engine room Headlining throughout Interior lighting, 12V Outlets, AC Teak Valances

Salon

The Salon has teak storage drawers, L-settee and teak hi-lo yacht table with flip-up leaves to port and straight settee and teak storage cabinets to starboard.

L-shaped settee Teak hi-lo yacht table w/flip-up leaves Straight settee Teak bar cabinet w/Icemaker below Entertainment center with Flatscreen TV Hatches to engine room

Galley

The U-shaped Galley is to port with cooktop, oven, microwave, holding plate refrigeration/freezer, trash bin, sink with cover, an abundance of storage and much more. Outboard aft is a custom teak cabinet with glass front that houses stemware. Looking forward, there are three (3) large separate storage spaces for dishware, flatware, etc. inside the countertop.

Teak dish locker w/adjustable shelves Dish locker forward of galley Teak drawers Exhaust blower, 12V Corian Sink Faucet, single lever Garbage bin, fiberglass Microwave Range/Oven, AC Refrigerator/Freezer, Grunert holding plate

Lower Helm

The Lower Helm is to starboard with a Grand Banks double seat, teak steering wheel and full instrumentation.

Alarm panel, engine temp & oil pressure Compass Control panel, AC/DC Teak electronics locker Double Helmseat Indicator light, reverse polarity Instrumentation panel Outlets, 12V DC Rudder angle indicator Teak steering wheel w/rim Windshield wipers/washer, 12V

Electronics

All electronics repeated at both stations:

KVH M-3 Satellite TV Receiver, 2014 Garmin 4' open array Radar, 2014 Garmin 8000 series chart plotter/radar/depth sounder, 2014 Garmin Autopilot, 2014 Raymarine VHF Radio Compass

Master Stateroom

The Master Stateroom is forward and full-beam with island queen berth, reading lights, teak book racks above the berth, and private en suite head with stall shower. There is plenty of storage throughout with a walk-in hanging locker, large drawers under the berth and several additional storage lockers.

Queen berth, forward Teak bureau w/drawers Walk-in Hanging locker Mirrors Reading lamps Private en suite head includes: Vacuflush marine toilet Holding tank indicator light Teak gratings in shower Shower with drain pump Sink/countertop, cultured marble Toothbrush holder Teak towel rack

Guest Stateroom

The Guest Stateroom is to port and offers twin side-by-side berths, reading lamps, mirror and large hanging locker between the berths with drawer storage below each berth.

Guest/Day Head

The Guest/Day Head with stall shower is to starboard across from the Guest Stateroom with companionway access. There is a Combomatic Washer/Dryer in a locker outboard of the shower.

Vacuflush marine toilet Holding tank indicator light Teak gratings Shower with drain pump Sink/countertop, cultured marble Toothbrush holder Teak towel rack Combomatic Washer/Dryer

Flybridge

The Flybridge is spacious with back-to-back seating and storage below. She has new 2013 cushions, new 2013 white canvas covers for all seating and tender, and new 2013 navy blue canvas privacy dodgers. The tender is an 11' Walker Bay with 20hp Honda 4-stroke outboard and is easily launched by her custom built UMT 600-lb. davit. There is full instrumentation at the flybridge helm with her Garmin 8000 Series chart plotter/radar safely stowed in a 2013 custom-built fiberglass lift-up cabinet, which also has space on either side for additional storage.

Engine Room/Mechanical Equipment

Twin Caterpillar 3126 diesel 420hp engines with 895 total hours as of 20 Jun 2015 As part of a Caterpillar factory product support program, the main engines were updated by Caterpillar approx. January 2003 along with the exhaust manifolds and expansion tanks. Onan 8kW Generator with 875 original hours as of 20 June 2015 Drips pans under engines Engine raw

water intake strainers Exhaust system, sea water cooled Fuel manifold system Sight gauges on fuel tanks Racor separating filters, fuel/water, main engines and generator Fresh water outlet in engine room Water tanks, marine aluminum Water/gas separator installed on gen's exhaust system Bilge pump, manual 4-blade Propellers Aquamet Propellers shafts Rudders Seacocks on all thru-hulls below waterline Throttle and gear shift controls, dual station Combomatic Washer/Dryer (located in Guest Head outboard)

Electrical Equipment

Onan 8kW Generator with 875 hours as of 20 Jun 2015 U-Line Icemaker Alternator, each engine Batteries, heavy-duty engine-starting, w/fiberglass boxes Battery charger, automatic Battery selector switch Bilge pump, automatic, 12V Bonding system Circuit breakers Engine room blowers, 12V Engine room lights, 12V Fresh water system, pressurized, 12V Galvanic isolator Generator amp and volt meters Generator with sound shield Ground fault circuit interrupters Holding tank w/pump-out, 12V Indicator light, bilge pump Indicator light, reverse polarity Navigation lights, 12V Shore power inlets, AC, bow & stern Spreader lights on mast, 12V Water heater

Remarks

LADY MARTHA has the preferred 2 stateroom/2 head layout, large covered aft deck at the salon level, spacious flybridge deck featuring 2012 new Bimini top, 2012 new custom seat cushions with increased thickness for more comfort and easy sight lines to her bow, 2012 new flybridge cushion covers and privacy dodgers, 2012 new 600-lb UMT custom dinghy davit for easy dinghy launching, 2012 Walker Bay center console dinghy with 20hp Honda 4 stroke, 2014 Garmin touch screen GPS/Radar installed in 2014, custom electronics locker, and 2014 Garmin autopilot.

On the main deck she features 2014 KVH M3 SAT TV, 2014 flatpanel TV in salon, fresh 2012 interior décor, 2014 Garmin touch screen GPS/Radar, 2014 Garmin autopilot, 6/2015 freshly serviced low hour Caterpillars, extremely clean engine room and so much more!

LADY MARTHA has been maintained to the highest degree by her knowledgeable owners and Captain. She is the finest Grand Banks 46 Europa on the market and will not last long.

Exclusions

Owners' personal belongings. A complete list will be provided upon request.

Исключения

При продаже яхты исключаются личные вещи владельца.

Отказ от ответственности

Компания предоставляет описание судна или яхты добросовестно, но не может гарантировать точность этой информации, а также не ручается за техническое состояние. Покупатель должен проинструктировать своих агентов или оценщиков исследовать представленную информацию более подробно, по собственному желанию. Продажа судна или яхты, изменение цены или снятие с продажи будет происходить без предварительного уведомления.

ФОТОГРАФИИ

Stern



Aft Deck



Aft Deck



Lazarette



Sidedeck Starboard



Foredeck



Bow



Foredeck



Foredeck



Flybridge



Flybridge



Flybridge



Flybridge



Flybridge



Flybridge



Flybridge



Flybridge



Flybridge



Salon



Salon



Salon



Salon



Salon



Salon



Galley



Galley



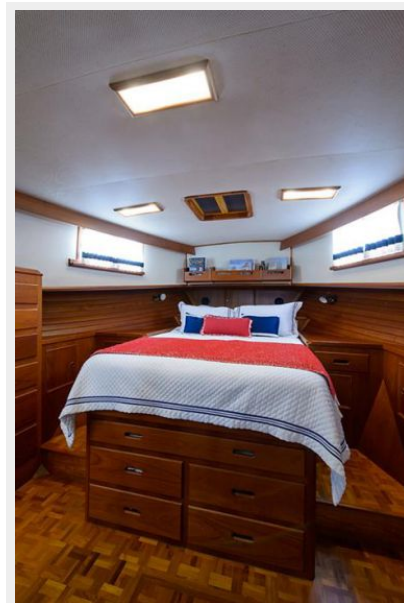
Galley



Lower Helm



Master Stateroom



Lower Helm



Master Stateroom



Master Stateroom



Master Stateroom



Master Stateroom



Master Head



Master Head



Guest Stateroom



Guest Stateroom



Guest Stateroom



Guest Head



Guest Head



Engine Room



Engine Room



Engine Room



Engine Room



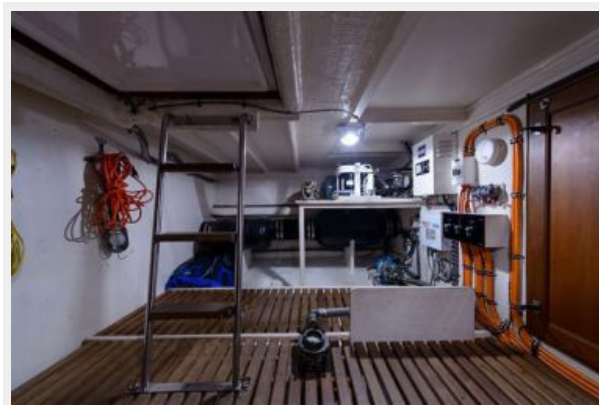
Engine Room



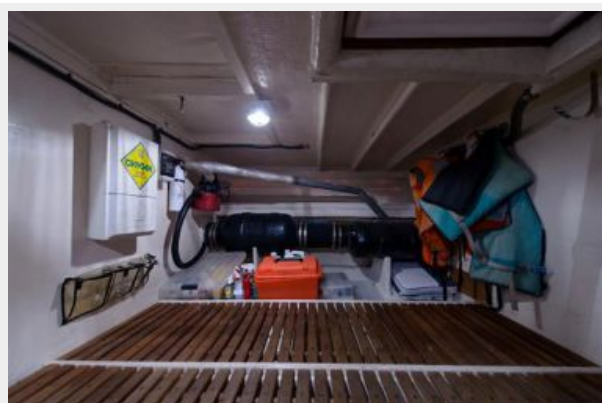
Engine Room



Utility Room



Utility Room



Stern View



Profile



КОНТАКТЫ

Андрей Шестаков (Andrey Shestakov) – ведущий яхтенный брокер отдела продаж яхт и судов компании Shestakov Yacht Sales Inc. Официальный представитель Shestakov Yacht Sales Inc. для русскоговорящих клиентов в центральном офисе компании в Майами/Форт Лодердейл/Флорида/США.

Контактная информация

Email: andrey@shestakovyachtsales.com

Web: shestakovyachtsales.com

Телефоны

Краснодарский край: **+7(918)465-66-44**

США, Майами, Флорида: **+1(954)274-4435**

Время работы

Понедельник – Суббота: **9:00 - 21:00**
EDT

Воскресенье: **Закрыто**

Адрес



Harbour Towne Marina, 850 NE 3rd St,
STE 213, Dania, FL 33004